



TIBCO Business Studio™ - BPM Edition

Installation

Version 4.3.2

May 2022



Contents

Accessing TIBCO Business Studio Help	3
Installing TIBCO Business Studio	4
Installation Features	4
System Requirements	4
Supported Platforms	4
Minimum Disk Space and Memory Requirements	5
Third-party Software Requirements	5
Compatibility	6
Installer Accounts	6
Installation Directories	7
Installer Log File	7
Environment Information	7
Installing in GUI Mode on Windows	8
Completing a Custom Installation on Windows	9
Installing in GUI Mode on Linux/UNIX	10
Failures in Linux Version 7 when TIBCO Business Studio uses the SWT Internal Browser	11
Installing in Silent Mode (All Platforms)	12
Perform Post Installation or Upgrade Tasks	14
Deletion of the Temporary Installation Files	14
Issues to be Aware of when Running on Linux	14
Redeploy Custom WCC Applications	14
Uninstalling TIBCO Business Studio	15
Using the Uninstaller	15
Using Programs and Features (Windows Only)	16
TIBCO Documentation and Support Services	17
Legal and Third-Party Notices	18

Accessing TIBCO Business Studio Help

You can access TIBCO Business Studio Help either online when using TIBCO Business Studio or by downloading it for use at any time.



TIBCO provide Out-Of-Cycle updates of product documentation. If you have downloaded the help already, and want to be notified of these updates for TIBCO Business Studio, navigate to the current version of TIBCO Business Studio documentation on the TIBCO Product Documentation page, and click **Subscribe** to subscribe to the RSS feed. When notified of an update you can re-download the html from the Product Documentation site to use the latest version. Copy it to the location of the existing help and access it from TIBCO Business Studio, or download it as described below to replace previously downloaded help. Alternatively you can go back to Preferences and re-download the help from there.



If your environment requires accessing of the internet via a proxy then go to **Window > Preferences > General > Network Connections** and configure the proxy settings.

Procedure

1. Go to the **Help** menu.
2. Select **Download Offline TIBCO Help...** This guides the user to the appropriate Preferences page (**Preferences > TIBCO Help > Content**).
 - **Content access strategy: Prefer offline help (if available).** (default) is already selected, but online help will be used until help is downloaded. The alternative selection is **Always use online help**.
 - To define where you want the offline help to be located, **Browse** to the location in which you want to save the **Base offline documentation folder** and click **Apply**. You can click **Location** to go to the location that is defined.
 - Select the help you want to download and click **Download** and **OK**.
 - The help is downloaded to the location specified in the **Base offline documentation** field. If the **Prefer offline Help (if available)**. content access strategy is selected then then the downloaded help content will be used. Once the help is downloaded then the **Help > Menu** items will open the downloaded offline help.

Installing TIBCO Business Studio

When you install TIBCO Business Studio, two installation modes are available: GUI and silent.

Before installing TIBCO Business Studio you need to ensure that you have the correct system requirements. See [System Requirements](#).

After installation, there are post installation tasks you may need to perform. See [Perform Post Installation Upgrade Tasks](#).

Installation Features

Different installation features are available that allow you to customize the installation of TIBCO Business Studio components.

The table lists the features you can select. To install additional features, select **Customize Installation** and select additional features.

If you install the **Process Simulation** feature or the **Openspace Gadget Development** feature, you must have **BPM Development Tools** selected.

Feature	Selected by Default
BPM Development Tools	Yes
Process Simulation	No
Workspace Client Components	No
Openspace Gadget Development	No
Apache Directory Studio (LDAP Tools)	Yes

System Requirements

Make sure that your target computer meets the necessary system requirements to install TIBCO Business Studio.

The system requirements are also listed in the `readme` file, which is available in the installation set in the `\docs` folder or from the TIBCO download site.

Supported Platforms

TIBCO Business Studio - BPM Edition is supported on various platforms.

Note that:

- The **Supported Versions** specified are the *minimum* versions of each operating system that are supported by TIBCO Business Studio. Any subsequent services packs, updates, patches or fix packs (as appropriate) for the specified versions are also supported.
- Other (64-bit) Linux implementations detailed in the following link have not been formally validated, but have no known incompatibilities with this version of TIBCO Business Studio.
http://www.eclipse.org/eclipse/development/plans/eclipse_project_plan_4_7.xml#target_environments
- On Linux platforms, the threshold value for the maximum number of open files/file descriptors that a user can open is typically too low for use with TIBCO Business Studio. You should increase this value to at least 10000. (You may need to increase it further depending on the features selected during

installation and the size of the workspace, but this value is typically sufficient.) You can use the `ulimit -n` command to display the current value on your system.

TIBCO Business Studio - BPM Edition (64-bit)

Operating System (64-bit)	Supported Versions	Supported Processor Architectures
Windows	Microsoft Windows 10	x86-64
Windows Server	<ul style="list-style-type: none"> Windows Server 2016 	x86-64
Linux	<ul style="list-style-type: none"> SUSE Linux Enterprise Server 12.1 to 12.2 Red Hat Enterprise Linux Server v6.x/6.3 - 6.9, and v7.x/7.1 - 7.4 CentOS Linux v6.x/6.3 - 6.9, and v7.x/7.1 - 7.4 Oracle Linux v6.x/6.3 - 6.9, and v7.x/7.1 - 7.4 	x86-64

Minimum Disk Space and Memory Requirements

TIBCO Business Studio requires minimum disk space for installation and minimum memory requirements in order to run efficiently.

- Free disk space: from 2 GB to 3 GB depending on options selected for installation.
- Memory: minimum 4 GB RAM; the recommended level is 8 GB, or more depending on project sizes.



You should increase the maximum memory size setting (`-Xmx`) in `TIBCOBusinessStudio.ini` to 2048m if you have large or complex projects and have the recommended 8GB memory.

Third-party Software Requirements

Additional third-party software is required when you install TIBCO Business Studio.

The following software and assemblies are required:

- JRE 1.8.x (included in installation). We recommend that users stay up to date with Java patches issued by Oracle.
- Hibernate Version 3.2.7
(`assembly_tibco_com_tibco_tpcl_org_hibernate_feature_3.2.500.002.zip`).



You must use a Hibernate Assembly that you have downloaded from TIBCO or the installation will fail.

During the installation process for TIBCO Business Studio, you can do one of the following:

- Allow the TIBCO Business Studio installer to automatically download and install Hibernate.
- Install TIBCO Business Studio using a Hibernate assembly that you have previously downloaded from TIBCO. During installation, you will be asked to specify the directory where you downloaded Hibernate.



If you want the installer to automatically install Hibernate, make sure you are online.



When downloading Hibernate, the number in the package name refers to the assembly number and not the version of Hibernate. This can be misleading as the assembly number is not the same as the Hibernate version number. For example, the package name when downloading Hibernate Version 3.2.7 is `assembly_tibco_com_tpcl_ord_hibernate_feature_3.2.500.002.zip`.

- Oracle Elliptic Curve Cryptography Library 1.8.x (`product_tibco_sunec_1.8.x<platform>.zip`)



`product_tibco_sunec_1.8.x<platform>.zip` should be copied into the assemblies folder for silent installation (when there is no option to specify the path). See [Installing in Silent Mode \(All Platforms\)](#).

- Eclipse SWT (Standard Web Toolkit) GTK

The TIBCO Business Studio installer for Linux 64 bit distributions downloads the Eclipse SWT GTK module which contains these two items:

- The Free Software Foundation, Gnome Binding
- The Free Software Foundation, GTK+ Binding

The zip file required is as follows:

- `product_tibco_eclipse_lgpl_4.7.1.001_linux24g123_x86_64.zip`

During the installation process for TIBCO Business Studio the steps are very similar to using Hibernate. An installation dialog comes up for accepting the license and then gives an option to download the assembly from the TIBCO public website or select it from the disk.



You require a minimum GTK+ version 2.24.

Compatibility

TIBCO Business Studio version 4.3.2 is compatible with specific versions of other TIBCO products.

The products that TIBCO Business Studio version 4.3.2 is compatible with are as follows:

- TIBCO BPM Enterprise 4.3.2
- TIBCO ActiveMatrix® Service Bus 3.4.1
- TIBCO ActiveMatrix® Service Grid 3.4.1



TIBCO Business Studio should have the appropriate level of ActiveMatrix Platform HotFix for the BPM server that you wish to connect to.

- TIBCO Nimbus™ 10.0.0 to 10.x
- TIBCO Business Studio™ ActiveMatrix® Decisions Add-In 1.4.0 - 1.4.x



If you are using TIBCO ActiveMatrix Service Bus or TIBCO ActiveMatrix Service Grid you must ensure that you also have the ActiveMatrix Platform Hotfix version that is compatible with the ActiveMatrix BPM server that you are using.

Installer Accounts

You require certain privileges to install TIBCO Business Studio on Windows and Linux/UNIX platforms.

Microsoft Windows

You must have administrator privileges for the machine on which TIBCO Business Studio is installed. If you do not have administrator privileges, the installer exits. You must then log out of the system and log in as a user with the required privileges, or request your system administrator to assign the privileges to your account.



After installing TIBCO Business Studio with administrator privileges, do not use the same account to create a workspace for the user. Instead, individual users should start TIBCO Business Studio from the account with which they intend to use TIBCO Business Studio, and create their own workspace to avoid potential issues with permissions.

If you intend to install the product on a network drive, you must ensure that the account used for installation has permission to access the network drive.

Linux/UNIX

TIBCO Business Studio can be installed either as a root or a local user. TIBCO recommends that you install as the user you plan to use for TIBCO Business Studio to avoid any potential permissions issues.

Installation Directories

You must install each version of TIBCO Business Studio into a new, empty installation environment (separate from earlier versions of TIBCO Business Studio or other TIBCO products).



Do **not** install into the existing `TIBCO_HOME` directory, which is the default option.



You should create a new workspace for each installation of TIBCO Business Studio.

To do this, install TIBCO Business Studio as described in [Installing in GUI Mode on Windows](#). Specify a new, empty directory or create a new, empty directory as the environment location.

You may install TIBCO Business Studio into an existing installation environment if:

- you are reinstalling the same edition and version of TIBCO Business Studio in order to repair a corrupt installation.
- you are sure none of the existing products in that installation environment conflict with the edition and version of TIBCO Business Studio that you are installing.

Installer Log File

The installer log file is written to specific locations for Windows and Linux.

Windows 10, Windows Server 2016

`User_Home\TIBCO\install_Identifier` directory where *Identifier* is in the form of the date and time TIBCO Business Studio was installed and a unique number used to identify this particular installation of TIBCO Business Studio.

For example, `C:\Users\user-name\TIBCO\install_03-02-2010.132827`

Linux/UNIX

`$HOME/TIBCO/install_Identifier` directory where *Identifier* is in the form of the date and time TIBCO Business Studio was installed and a unique number used to identify this particular installation of TIBCO Business Studio.

For example, `/home/user1/TIBCO/install_03-02-2010.132827`

Environment Information

The file `_envInfo.xml` is written to this location for Windows: `C:\Program Files\Common Files\InstallShield\Universal\TIBCO\Gen1_vpddb`.

Installing in GUI Mode on Windows

This procedure explains how to install TIBCO Business Studio in GUI mode. Hibernate is also installed as part of the installation process.

Prerequisites

Log in to the system on which you want to install TIBCO Business Studio (for more information, see [Installer Accounts](#)). If you want the installer to automatically install Hibernate 3.2.7, make sure you are online. See [Third-party Software Requirements](#) for more information.

Open the physical media or download the TIBCO Business Studio package to the machine on which you want to install TIBCO Business Studio.

Extract the installation files to a temporary directory.

Procedure

1. Double-click **TIBCOUniversalInstaller**.
2. Review the information in the Welcome dialog and click **Next**.
Review the terms of the license agreement and, if you agree to them, click **I accept the terms of the license agreement**. Then click **Next** to continue with the installation.
If you do not agree to the terms of the license agreement, click **Cancel** to exit from the installation process.
3. From the **TIBCO Installation Home** dialog, TIBCO_HOME is the preferred top level installation directory for all TIBCO products on your system. Select either:
 - **Create a new TIBCO_HOME**. Click **Browse** to specify an environment location (a directory path to an empty folder into which the software will be installed), or accept the default environment location (which is the last directory in the path selected).
 - **Use an existing TIBCO_HOME**. Select an existing TIBCO_HOME from the drop-down list.
You should provide your own environment name (by default environment name is empty). If this is not the first installation of TIBCO software, you should give different environment name than the already existing one.
Click **Next**.
4. On the **Installation Profile Selection** dialog, accept the selection of Solution Designer profile in the list in the left hand pane (see [Installation Features](#)) or select **Customize Installation**. See [Completing a Custom Installation on Windows](#) for information on additional steps in the custom installation. The right hand pane displays the features that are selected for each profile. Click **Next**
5. Review the terms of the LGPL License Agreement and, if you agree to them, click **I accept the terms of the license agreement**. Then click **Next** to continue with the installation.
If you do not agree to the terms of the license agreement, click **Cancel** to exit from the installation process.
6. On the **LGPL Assembly Download** dialog, select **Download Hibernate Assembly from TIBCO or Provide the location for the assembly previously downloaded from TIBCO**.
7. Review the terms of the LGPL License Agreement and, if you agree to them, click **I accept the terms of the license agreement**. Then click **Next** to continue with the installation.
If you do not agree to the terms of the license agreement, click **Cancel** to exit from the installation process.
8. On the **LGPL Assembly Download** dialog, select **Download Oracle Elliptic Curve Cryptography Library as ...** or **Provide the location for the assembly previously downloaded from TIBCO**.

9. After the installer configures your installation choices, the **Pre-Install Summary** dialog is displayed. Review the information displayed in the dialog and make sure that it is correct.
If you want to change any of your choices, click **Back** to step back through the dialogs to the appropriate point and make your choices again.
When you are satisfied with your choices, click **Install**. The installer now performs the necessary installation tasks.
10. Once the installer has finished the installation tasks, the **Running Product ANT Tasks** dialog is displayed. The installer now performs the necessary tasks to initialize the installation. Click **Show Details** to see the tasks that the installer is performing. Click **Finish** to exit from the installer. There is a slight delay while the installer deletes temporary files.

What to do next

Complete the post-installation tasks described in [Perform Post Installation Upgrade Tasks](#).

Completing a Custom Installation on Windows

A custom installation provides you with more options than an installation using the default settings.

Prerequisites

Log in to the system on which you want to install TIBCO Business Studio (for more information, see [Installer Accounts](#)). If you want the installer to automatically install Hibernate 3.2.7, make sure you are online. See [Third-party Software Requirements](#) for more information.

Open the physical media or download the TIBCO Business Studio package to the machine on which you want to install TIBCO Business Studio.

Extract the installation files to a temporary directory.



TIBCO strongly recommend **not** to install on a customized Eclipse.

Procedure

1. Double-click **TIBCOUniversalInstaller**.
2. Review the information in the Welcome dialog and click **Next**.
Review the terms of the license agreement and, if you agree to them, click **I accept the terms of the license agreement**. Then click **Next** to continue with the installation. If you do not agree to the terms of the license agreement, click **Cancel** to exit from the installation process.
3. The **TIBCO Installation Home** dialog appears. TIBCO_HOME is the preferred top level installation directory for all TIBCO products on your system. Select either:
 - **Create a new TIBCO_HOME**. Click **Browse** to specify an environment location (a directory path to an empty folder into which the software will be installed), or accept the default environment location (which is the last directory in the path selected).
 - **Use an existing TIBCO_HOME**. Select an existing TIBCO_HOME from the drop-down list.
You should provide your own environment name (By default environment name is empty). If this is not the first installation of TIBCO software, you should give different environment name than the already existing one.
Click **Next**
4. On the Installation Profile Selection dialog, select **Customize Installation** in the left hand pane. In the right hand pane, all the features are selected except **Process Simulation**, **Workspace Client Components**, and **Openspace Gadget Development**. You can add or remove individual features, depending on your requirements. Click **Next**.

5. Review the terms of the LGPL License Agreement and, if you agree to them, click **I accept the terms of the license agreement**. Then click **Next** to continue with the installation.
If you do not agree to the terms of the license agreement, click **Cancel** to exit from the installation process.
6. On the **LGPL Assembly Download** dialog, select **Download Hibernate Assembly from TIBCO** or **Provide the location for the assembly previously downloaded from TIBCO**.
7. Review the terms of the LGPL License Agreement and, if you agree to them, click **I accept the terms of the license agreement**. Then click **Next** to continue with the installation.
If you do not agree to the terms of the license agreement, click **Cancel** to exit from the installation process.
8. On the **LGPL Assembly Download** dialog, select **Download Oracle Elliptic Curve Cryptography Library as ...** or **Provide the location for the assembly previously downloaded from TIBCO**.
9. After the installer configures your installation choices, the **Pre-Install Summary** dialog is displayed. Review the information displayed in the dialog and make sure that it is correct. If you want to change any of your choices, click **Back** to step back through the dialogs to the appropriate point. You can then restart the installation process from that point. When you are satisfied with your choices, click **Install**.
10. Once the installer has finished the installation tasks, the **Running Product ANT Tasks** dialog is displayed. The installer now performs the necessary tasks to initialize the installation. Click **Show Details** to see the tasks that the installer is performing. Click **Finish** to exit from the installer.

What to do next

Complete the post-installation tasks described in [Perform Post Installation Upgrade Tasks](#)

Installing in GUI Mode on Linux/UNIX

You can install in GUI mode on Linux/UNIX using a similar procedure to that used for installing on Windows, with the addition of acceptance of an extra license file.

Prerequisites

Log in to the system on which you want to install TIBCO Business Studio (for more information, see [Installer Accounts](#)). If you want the installer to automatically install Hibernate 3.2.7, make sure you are online. See [Third-party Software Requirements](#) for more information.

Open the physical media or download the TIBCO Business Studio package to the machine on which you want to install TIBCO Business Studio.

Extract the installation files to a temporary directory.

Procedure

1. Run the shell script `TIBCOUniversalInstaller-lnx-x nn.bin`.
2. Double-click **TIBCOUniversalInstaller**.
3. Review the information in the **Welcome** dialog and click **Next**.
Review the terms of the license agreement and, if you agree to them, click **I accept the terms of the license agreement**. Then click **Next** to continue with the installation.
If you do not agree to the terms of the license agreement, click **Cancel** to exit from the installation process.
4. From the **TIBCO Installation Home** dialog, `TIBCO_HOME` is the preferred top level installation directory for all TIBCO products on your system. Select either:

- **Create a new TIBCO_HOME.** Click **Browse** to specify an environment location (a directory path to an empty folder into which the software will be installed), or accept the default environment location (which is the last directory in the path selected).
- **Use an existing TIBCO_HOME.** Select an existing TIBCO_HOME from the drop-down list.
You should provide your own environment name (by default environment name is empty). If this is not the first installation of TIBCO software, you should give different environment name than the already existing one.

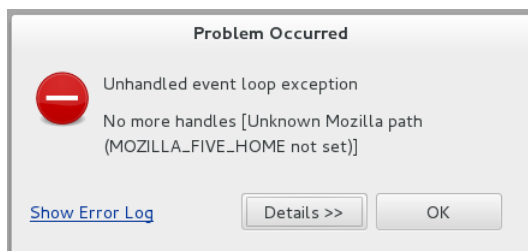
Click **Next**.

5. Choose a profile from the list in the left hand pane (see [Installation Features](#)). The right hand pane displays the features that are selected for each profile. Click **Next**.
6. Review the terms of the LGPL License Agreement and, if you agree to them, click **I accept the terms of the license agreement**. Then click **Next** to continue with the installation.
If you do not agree to the terms of the license agreement, click **Cancel** to exit from the installation process.
7. Accept the Gnome License Agreement which uses the LGPL License. Click on **Download Gnome Binding assembly from TIBCO**.
8. After the installer configures your installation choices, the **Pre-Install Summary** dialog is displayed. Review the information displayed in the dialog and make sure that it is correct.
If you want to change any of your choices, click **Back** to step back through the dialogs to the appropriate point and make your choices again.
When you are satisfied with your choices, click **Install**. The installer now performs the necessary installation tasks.
9. Once the installer has finished the installation tasks, the **Running Product ANT Tasks** dialog is displayed. The installer now performs the necessary tasks to initialize the installation. Click **Show Details** to see the tasks that the installer is performing. Click **Finish** to exit from the installer. There is a slight delay while the installer deletes temporary files.

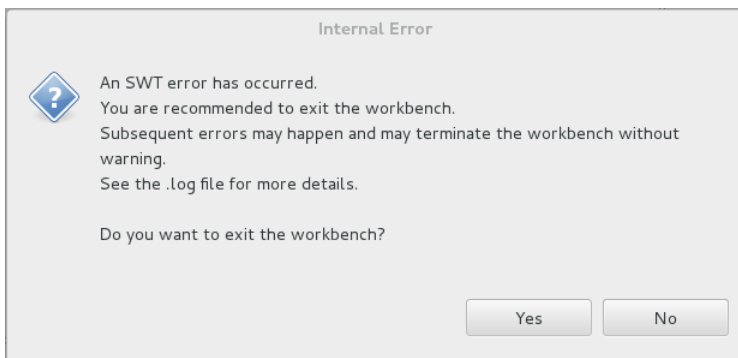
Failures in Linux Version 7 when TIBCO Business Studio uses the SWT Internal Browser

There are failures in Linux Version 7 (OEL7, CentOS 7, RHEL 7) when TIBCO Business Studio uses the SWT internal browser (used for BPM Live Dev, Email Service Task, TIBCO Product Help view) and an error message is displayed.


You will see the following error:



When you click **OK** you see the following error message.



To fix this you must install **64-Bit XULRunner 1.9.2**. You need to download this from the Mozilla nightly builds site: <http://ftp.mozilla.org/pub/mozilla.org/xulrunner/nightly/2012/03/2012-03-02-03-32-11-mozilla-1.9.2/>

1. Extract the contents of the tar file by entering the following command: `tar -xvif tar-file-name`
 2. To make the new XULRunner version available, update the TIBCO Business Studio `.ini` file and add the following Java VM arguments (vmargs) in the file: -
`Dorg.eclipse.swt.browser.XULRunnerPath=pathto-XULRunner.`
 - **Note:** This update applies to a specific instance of TIBCO Business Studio. If the instance of TIBCO Business Studio was installed for an individual user, the update only applies to that user. If TIBCO Business Studio was installed as a shared instance that is used by multiple users, the update applies to all users of the shared instance.
 - The following procedure makes the new version available to all users on the system:
 - As user root, extract the XULRunner runtime directory to a location that is accessible to all users, for example, `/usr/lib/xulrunner-1.9.2`.
 - From the XULRunner directory, enter the following command: `./xulrunner --register-global`
 - The following procedure makes the new version available to an individual user
 - Extract the XULRunner runtime directory to the home directory of the user.
 - From the XULRunner directory, enter the following command: `./xulrunner --register-user`
-  Registering XULRunner persists across the system and TIBCO Business Studio restarts.
3. Restart TIBCO Business Studio and confirm that the issues have been resolved.

Installing in Silent Mode (All Platforms)

You can install TIBCO Business Studio in silent mode on all platforms.

Prerequisites

The `TIBCOUniversalInstaller.silent` file is packaged in the directory that contains the universal installer. You must edit the file with information for your environment before launching the silent installation. The file includes comments that describe the installation properties you can set.

While you can use the `TIBCOUniversalInstaller.silent` file, it's good practice to copy the file to a different name and use that file for the silent install.

If errors occur during installation, they will be listed in the installation log file (see the `User_Home/.TIBCO` directory).

Procedure

1. Open the physical media or download the TIBCO Business Studio product package.
2. Extract the TIBCO Business Studio product archive file to a temporary directory.
3. Using a console window, navigate to the temporary directory that contains the universal installer.
4. Copy the `TIBCOUniversalInstaller.silent` file and name the file.
5. Using a text editor, open the copied file and update the install location, and the list of features to install.
6. Run the installer: `TIBCOUniversalInstaller -silent -V responseFile="myfilename.silent"`

If you are using the `TIBCOUniversalInstaller.silent` file, you need not supply the file name and can run: `TIBCOUniversalInstaller -silent`.

Oracle Elliptic Curve Cryptography Library (`product_tibco_sunec_1.8.0._x<platform>.zip`) should be copied into the assemblies folder.

What to do next

Complete the post-installation tasks described in [Perform Post Installation Upgrade Tasks](#).

Perform Post Installation or Upgrade Tasks

After installation, there are a number of tasks you can perform to ensure that your system runs efficiently.

Deletion of the Temporary Installation Files

If you want to recover the disk space used by the installation files that you extracted to a temporary directory in step 3 of the installation, delete them.

Issues to be Aware of when Running on Linux

If you are running on Linux, you should be aware of the following notes.

If you want to run TIBCO Business Studio in "headless" mode on Linux for command line build and deploy, it is necessary to have the **Xvfb** service running as some of the underlying eclipse components require an X Window System running on *NX based operating systems.

The examples below are for Red Hat Linux (x86_64). You can tailor these steps to your own installation.

In text terminal mode (a default Red Hat 6 runlevel 3 for example) you can use Xvfb to run X Window Virtual Frame Buffer:

1. Install the Virtual Frame Buffer package for X11 if it is not already installed. If this is not available in the base repository of Red Hat you should enable one of Red Hat specific package repositories.

```
yum install xorg-x11-server-Xvfb.x86_64
```

2. `export DISPLAY=:1`

3. `xvfb-run <your ant script`

Or alternatively:

4. `yum install xorg-x11-server-Xvfb.x86_64`

5. `export DISPLAY=:1`

6. `Xvfb :1 > /dev/null 2>&1 &`

7. `...<run your ant script`

The other solution is simply to start the X Window server.

Redeploy Custom WCC Applications

If you have upgraded TIBCO Business Studio, the install also upgrades WCC design-time software. If you had previously used TIBCO Business Studio to develop and configure a custom WCC application, you must redeploy the WCC application after upgrading TIBCO Business Studio to pick up any new functionality that was installed in the upgrade.

The following is a summary of the main tasks that need to be performed to redeploy a custom WCC application. For more details, see "Deploying an Application After Customizing" in the *TIBCO Workspace Configuration and Customization* guide.

Procedure

1. Create a new WAR file for your custom application.
2. Copy the WAR file to TIBCO Business Studio.
3. Create a DAA for the application.
4. Undeploy the previously deployed custom application using TIBCO Administrator.
5. Deploy the DAA created in [Step 3](#) to the runtime node using TIBCO Administrator.

Uninstalling TIBCO Business Studio

To uninstall TIBCO Business Studio from your system, perform the following steps:



When you uninstall, some files are currently left behind that are not user data. You can remove these files manually if required.

Linux\UNIX

1. Open a terminal.
2. Navigate to `STUDIO_HOME/tools/universal_installer`.
3. Run the uninstaller named `TIBCOUniversalInstaller-lnx-x86-64.bin`.

Windows

Either:

- Use the uninstaller provided with TIBCO Business Studio or
- Remove the installation using the **Programs and features** option in Control Panel on Windows System.



When you installed TIBCO Business Studio, if the installer detected a suitable Java Virtual Machine (JVM), that JVM is used by TIBCO Business Studio. The uninstallation will fail if you remove the JVM used by TIBCO Business Studio before removing TIBCO Business Studio. If this happens, you can use the command line to uninstall with the **-is:javahome** option.

To do this, navigate to the `STUDIO_HOME/tools/universal_installer` folder and enter the following command `TIBCOUniversalInstaller-x86-64.exe -is:javahome <JRE_HOME>`

Using the Uninstaller

Uninstall TIBCO Business Studio using the uninstaller.

Procedure

1. Log in to the system on which you want to uninstall software.
2. The **Welcome** dialog is displayed. Click **Next**.
3. Do one of the following:
 - Select **Typical** to uninstall all products in the environment, and omit the next step.
 - Select **Custom** to choose products in this environment to uninstall , and continue with the next step.
4. The **Product Uninstall Selection** dialog is displayed. Select the products (for example, TIBCO Business Studio 3.9.0) you want to uninstall and click **Next**.
5. The **Ready to Uninstall** dialog is displayed. If you want to change any of your choices, click **Back** to step back through the dialogs to the appropriate point. You can then restart the uninstallation process from that point. When you are satisfied with your choices, click **Uninstall**.



The TIBCO Business Studio entries in the Start menus may appear after the uninstallation. To correct this log out, then log in again.

Using Programs and Features (Windows Only)

You can remove the installation using the **Programs and Features** option on your PC.

Procedure

1. Log in to Windows as a user with system administrator privileges. You must have system administrator privileges to uninstall this software.
2. In the **Control Panel**, double-click **Programs and Features**.
3. In the **Programs and Features** dialog, select **TIBCO Universal Installer (> installation_environment_# >)**, where **installation_environment_#** is the directory corresponding to the installation environment you want to uninstall. If you have installed more than one TIBCO product, there will be multiple entries in **Programs and Features** (for example, **TIBCO Universal Installer (c:\tibco\env_1)**, **TIBCO Universal Installer (c:\tibco\env_2)**, and so on).
4. Click **Uninstall/Change**.



The uninstaller may not completely remove files that have been modified since the initial installation (for example, the configuration directory). If you do not need any of the other remaining files, manually delete them.

TIBCO Documentation and Support Services

How to Access TIBCO Documentation

Documentation for TIBCO products is available on the [TIBCO Product Documentation](#) website, mainly in HTML and PDF formats.

The website is updated frequently and is more current than any other documentation included with the product.

Product-Specific Documentation

The following documentation for TIBCO Business Studio is available on the [TIBCO Business Studio Product Documentation](#) page:

- TIBCO Business Studio™ Release Notes
- TIBCO Business Studio™ Concepts
- TIBCO Business Studio™ Modeling User's Guide
- TIBCO Business Studio™ - Analyst Edition User's Guide
- TIBCO Business Studio™ - BPM Implementation
- TIBCO Business Studio™ Forms User's Guide
- TIBCO Business Studio™ Simulation User's Guide
- TIBCO Business Studio™ Customization
- TIBCO Business Studio™ - Analyst Edition Installation
- TIBCO Business Studio™ - BPM Edition Installation
- TIBCO Business Studio™ iProcess to BPM Conversion

How to Contact TIBCO Support

Get an overview of [TIBCO Support](#). You can contact TIBCO Support in the following ways:

- For accessing the Support Knowledge Base and getting personalized content about products you are interested in, visit the [TIBCO Support](#) website.
- For creating a Support case, you must have a valid maintenance or support contract with TIBCO. You also need a user name and password to log in to [TIBCO Support](#) website. If you do not have a user name, you can request one by clicking **Register** on the website.

How to Join TIBCO Community

TIBCO Community is the official channel for TIBCO customers, partners, and employee subject matter experts to share and access their collective experience. TIBCO Community offers access to Q&A forums, product wikis, and best practices. It also offers access to extensions, adapters, solution accelerators, and tools that extend and enable customers to gain full value from TIBCO products. In addition, users can submit and vote on feature requests from within the [TIBCO Ideas Portal](#). For a free registration, go to [TIBCO Community](#).

Legal and Third-Party Notices

SOME TIBCO SOFTWARE EMBEDS OR BUNDLES OTHER TIBCO SOFTWARE. USE OF SUCH EMBEDDED OR BUNDLED TIBCO SOFTWARE IS SOLELY TO ENABLE THE FUNCTIONALITY (OR PROVIDE LIMITED ADD-ON FUNCTIONALITY) OF THE LICENSED TIBCO SOFTWARE. THE EMBEDDED OR BUNDLED SOFTWARE IS NOT LICENSED TO BE USED OR ACCESSED BY ANY OTHER TIBCO SOFTWARE OR FOR ANY OTHER PURPOSE.

USE OF TIBCO SOFTWARE AND THIS DOCUMENT IS SUBJECT TO THE TERMS AND CONDITIONS OF A LICENSE AGREEMENT FOUND IN EITHER A SEPARATELY EXECUTED SOFTWARE LICENSE AGREEMENT, OR, IF THERE IS NO SUCH SEPARATE AGREEMENT, THE CLICKWRAP END USER LICENSE AGREEMENT WHICH IS DISPLAYED DURING DOWNLOAD OR INSTALLATION OF THE SOFTWARE (AND WHICH IS DUPLICATED IN THE LICENSE FILE) OR IF THERE IS NO SUCH SOFTWARE LICENSE AGREEMENT OR CLICKWRAP END USER LICENSE AGREEMENT, THE LICENSE(S) LOCATED IN THE "LICENSE" FILE(S) OF THE SOFTWARE. USE OF THIS DOCUMENT IS SUBJECT TO THOSE TERMS AND CONDITIONS, AND YOUR USE HEREOF SHALL CONSTITUTE ACCEPTANCE OF AND AN AGREEMENT TO BE BOUND BY THE SAME.

This document is subject to U.S. and international copyright laws and treaties. No part of this document may be reproduced in any form without the written authorization of TIBCO Software Inc.

TIBCO, the TIBCO logo, the TIBCO O logo, Enterprise Message Service, Business Studio, and ActiveMatrix are either registered trademarks or trademarks of TIBCO Software Inc. in the United States and/or other countries.

Java and all Java based trademarks and logos are trademarks or registered trademarks of Oracle and/or its affiliates.

All other product and company names and marks mentioned in this document are the property of their respective owners and are mentioned for identification purposes only.

This software may be available on multiple operating systems. However, not all operating system platforms for a specific software version are released at the same time. See the readme.txt file for the availability of this software version on a specific operating system platform.

THIS DOCUMENT IS PROVIDED "AS IS" WITHOUT WARRANTY OF ANY KIND, EITHER EXPRESS OR IMPLIED, INCLUDING, BUT NOT LIMITED TO, THE IMPLIED WARRANTIES OF MERCHANTABILITY, FITNESS FOR A PARTICULAR PURPOSE, OR NON-INFRINGEMENT.

THIS DOCUMENT COULD INCLUDE TECHNICAL INACCURACIES OR TYPOGRAPHICAL ERRORS. CHANGES ARE PERIODICALLY ADDED TO THE INFORMATION HEREIN; THESE CHANGES WILL BE INCORPORATED IN NEW EDITIONS OF THIS DOCUMENT. TIBCO SOFTWARE INC. MAY MAKE IMPROVEMENTS AND/OR CHANGES IN THE PRODUCT(S) AND/OR THE PROGRAM(S) DESCRIBED IN THIS DOCUMENT AT ANY TIME.

THE CONTENTS OF THIS DOCUMENT MAY BE MODIFIED AND/OR QUALIFIED, DIRECTLY OR INDIRECTLY, BY OTHER DOCUMENTATION WHICH ACCOMPANIES THIS SOFTWARE, INCLUDING BUT NOT LIMITED TO ANY RELEASE NOTES AND "READ ME" FILES.

This and other products of TIBCO Software Inc. may be covered by registered patents. Please refer to TIBCO's Virtual Patent Marking document (<https://www.tibco.com/patents>) for details.

Copyright © 2004-2022. TIBCO Software Inc. All Rights Reserved.