

TIBCO Foresight® Products

Managing Custom Error Messages with a Spreadsheet

August 2017

Important Information

SOME TIBCO SOFTWARE EMBEDS OR BUNDLES OTHER TIBCO SOFTWARE. USE OF SUCH EMBEDDED OR BUNDLED TIBCO SOFTWARE IS SOLELY TO ENABLE THE FUNCTIONALITY (OR PROVIDE LIMITED ADD-ON FUNCTIONALITY) OF THE LICENSED TIBCO SOFTWARE. THE EMBEDDED OR BUNDLED SOFTWARE IS NOT LICENSED TO BE USED OR ACCESSED BY ANY OTHER TIBCO SOFTWARE OR FOR ANY OTHER PURPOSE.

USE OF TIBCO SOFTWARE AND THIS DOCUMENT IS SUBJECT TO THE TERMS AND CONDITIONS OF A LICENSE AGREEMENT FOUND IN EITHER A SEPARATELY EXECUTED SOFTWARE LICENSE AGREEMENT, OR, IF THERE IS NO SUCH SEPARATE AGREEMENT, THE CLICKWRAP END USER LICENSE AGREEMENT WHICH IS DISPLAYED DURING DOWNLOAD OR INSTALLATION OF THE SOFTWARE (AND WHICH IS DUPLICATED IN THE LICENSE FILE) OR IF THERE IS NO SUCH SOFTWARE LICENSE AGREEMENT OR CLICKWRAP END USER LICENSE AGREEMENT, THE LICENSE(S) LOCATED IN THE "LICENSE" FILE(S) OF THE SOFTWARE. USE OF THIS DOCUMENT IS SUBJECT TO THOSE TERMS AND CONDITIONS, AND YOUR USE HEREOF SHALL CONSTITUTE ACCEPTANCE OF AND AN AGREEMENT TO BE BOUND BY THE SAME.

This document contains confidential information that is subject to U.S. and international copyright laws and treaties. No part of this document may be reproduced in any form without the written authorization of TIBCO Software Inc.

TIBCO, Two-Second Advantage, TIBCO Foresight Instream, TIBCO Foresight Studio, and TIBCO Foresight Transaction Insight are either registered trademarks or trademarks of TIBCO Software Inc. in the United States and/or other countries.

Enterprise Java Beans (EJB), Java Platform Enterprise Edition (Java EE), Java 2 Platform Enterprise Edition (J2EE), and all Java-based trademarks and logos are trademarks or registered trademarks of Oracle Corporation in the U.S. and other countries.

The United States Postal Service holds the copyright in the USPS City State Zip Codes. (c) United States Postal Service 2017.

All other product and company names and marks mentioned in this document are the property of their respective owners and are mentioned for identification purposes only.

THIS SOFTWARE MAY BE AVAILABLE ON MULTIPLE OPERATING SYSTEMS. HOWEVER, NOT ALL OPERATING SYSTEM PLATFORMS FOR A SPECIFIC SOFTWARE VERSION ARE RELEASED AT THE SAME TIME. SEE THE README FILE FOR THE AVAILABILITY OF THIS SOFTWARE VERSION ON A SPECIFIC OPERATING SYSTEM PLATFORM.

THIS DOCUMENT IS PROVIDED "AS IS" WITHOUT WARRANTY OF ANY KIND, EITHER EXPRESS OR IMPLIED, INCLUDING, BUT NOT LIMITED TO, THE IMPLIED WARRANTIES OF MERCHANTABILITY, FITNESS FOR A PARTICULAR PURPOSE, OR NON-INFRINGEMENT.

THIS DOCUMENT COULD INCLUDE TECHNICAL INACCURACIES OR TYPOGRAPHICAL ERRORS. CHANGES ARE PERIODICALLY ADDED TO THE INFORMATION HEREIN; THESE CHANGES WILL BE INCORPORATED IN NEW EDITIONS OF THIS DOCUMENT. TIBCO SOFTWARE INC. MAY MAKE IMPROVEMENTS AND/OR CHANGES IN THE PRODUCT(S) AND/OR THE PROGRAM(S) DESCRIBED IN THIS DOCUMENT AT ANY TIME.

THE CONTENTS OF THIS DOCUMENT MAY BE MODIFIED AND/OR QUALIFIED, DIRECTLY OR INDIRECTLY, BY OTHER DOCUMENTATION WHICH ACCOMPANIES THIS SOFTWARE, INCLUDING BUT NOT LIMITED TO ANY RELEASE NOTES AND "READ ME" FILES.

Copyright © 2010-2017 TIBCO Software Inc. ALL RIGHTS RESERVED.

General Contact Information

TIBCO Software Inc.
3303 Hillview Avenue
Palo Alto, CA 94304 USA
Tel: +1 650 846 1000
Fax: +1 650 846 1005

Technical Support

E-mail: support@tibco.com
Web: <https://support.tibco.com>

(Note: Entry to this site requires a username and password. If you do not have one, you can request one. You must have a valid maintenance or support contract to use this site.)

Contents

Introduction.....	2
Capabilities.....	2
Setting up your Spreadsheet.....	3
Generating Output.....	5
Example	7
Customer Transaction Insight ErrMsgTrans File	10

Introduction

This document is for those who are familiar with TIBCO Foresight® Instream® and/or TIBCO Foresight® Transaction Insight® error messages and who want to:

- Create custom error messages with TIBCO Foresight® EDISIM® Standards Editor
- Work with custom error messages with Instream®
- Update custom error messages in Transaction Insight®.

Microsoft Excel is required to manage custom error messages.

Capabilities

BusinessRules.pdf explains how you can create your own error messages and place them in a separate customer errors file. These messages work with Instream.

Response Generator custom reports and Transaction Insight display TIBCO Foresight error messages in different “flavors” so that they make sense to technical users, business users, UB92 users, and other groups.

Instream and TIBCO Foresight® HIPAA Validator® Desktop include a spreadsheet that lets you:

- Provide flavors of error messages in Transaction Insight for your own custom error messages.
- Provide flavors of error messages and COBA dispute codes in Response Generator custom reports.

Every time you change or add a custom error message, you can alert Transaction Insight and Response Generator to these changes by using **User Error Messages.xls**, which is in Instream and HIPAA Validator® Desktop’s **Demodata** directories.

Output is:

- Transaction Insight database scripts to update custom error messages.
- Entries for your custom error messages for these files:

ErrMsgTrans.txt

Variations of error text for Response Generator, Document Splitter, and Transaction Insight

COBA dispute codes for Response Generator custom reports

Validation profile (APF) files

Severities, types, etc., for custom error messages

CustomerFSBRERRS.txt

Custom error message numbers and text (for use with your own business rules)

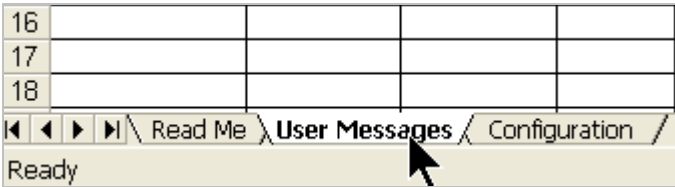
Setting up your Spreadsheet

To do this:

1. Go to Instream or HIPAA Validator Desktop's **Demodata** directory and open **User Error Messages.xls** with Microsoft Excel.

Enable the macros if asked.

2. Select the **User Messages** tab at the bottom:



3. Copy all customer error messages from CustomerFSBRERRS.TXT and paste into cell A2. You can also type the error information directly into the spreadsheet.

	A	B
1	Error#	EDI Message
2	32001	The NM103 must start with "TOPCAT"
3	32002	THE BHT03 must have code value 00 - Original
	32005	The subscriber NM109 was not covered on the dates in the Statement Date DTP03.

4. Type in a variation of messages for non-technical Transaction Insight users, if desired.

If you skip this column, Transaction Insight users will see the text in the EDI Message column, even if they choose to display non-technical messages.

	A	B	C
1	Error#	EDI Message	Non-Technical Message
2	32001	The NM103 must start with "TOPCAT"	The Receive Name must start with "TOPCAT"
3	32002	THE BHT03 must have code value 00 - Original	The transaction's purpose code must be "Original"
4	32005	The subscriber NM109 was not covered on the dates in the Statement Date DTP03.	The subscriber's ID code was not covered on the claim statement's date.

5. Likewise, use the other columns to add variations of the message for UB92, HCFA 1500, NSF, and/or ADA if desired.
6. Specify the settings for any remaining columns where you do not want to use the defaults. Except for COBA, these are all used to create the error in the [Warning Levels] section of your validation profile (APF) files. Please see **APF.pdf** for details.

Most have drop-down arrows where you can select a value:

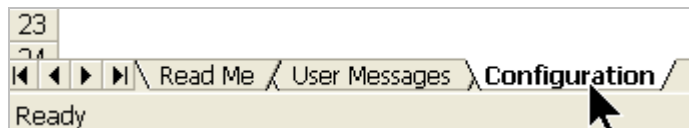
J	K
AK304	AK40
8	7

Severity	Use arrow; see APF.pdf
HIPAA Type	Use arrow; see APF.pdf
AK304	Use arrow; see AK3 in APF.pdf
AK403	Use arrow; see AK4 in APF.pdf
TED01	Use arrow; see TED01 in APF.pdf
TED02	Use arrow; see TED02 in APF.pdf
STC0102	Use arrow; see STC-01-02 in APF.pdf
APP Data	Type application data (for your own use)
COBA	Type the COBA dispute code for this error – to be included in the ErrMsgTrans.txt file output and used by Response Generator when creating a COBA custom report
IK304	Use arrow; see IK3 in APF.pdf
IK403	Use arrow; see IK4 in APF.pdf

7. Save the spreadsheet. Keep it in a safe place for use when you change or add another custom error message.

Generating Output

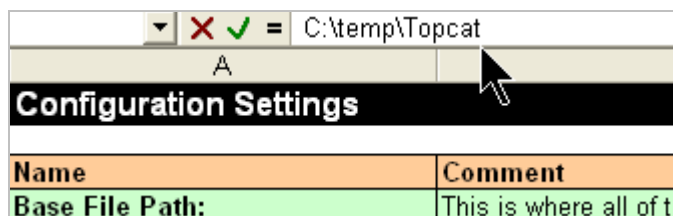
1. Select the **Configuration** tab at the bottom.



2. For each line, check the cell in the **Value** column:

Configuration Settings		
Name	Comment	Value
Base File Path:	This is where all of the files	C:\temp\usermsgtest
Base File Name:	This value will be used as part of the filename for each	MyCompany

To change the value, type the new value at the top:



Base File Path:	Type the directory path where you want the output files to go. Create this directory if it does not exist.
Base File Name:	Type the prefix for the file names. Each output file will start with this. Example: Base File Name TOPCAT Output files Topcat _UpdateErrorsInT Topcat _fragment.apf etc.
Version	For your own use (this goes into a comment in the Transaction Insight database scripts).
Create Pre310 ORACLE Script?	If YES, output will include a script to insert or update these error messages in your Oracle database for Transaction Insight versions earlier than 3.10.
Create Pre310 MS-SQL Script?	If YES, output will include a script to insert or update these error messages in your SQL Server database for Transaction Insight versions earlier than 3.10.
Create ORACLE Script?	If YES, output will include a script to insert or update these error messages in your Oracle database for Transaction Insight versions of 3.1 or later.
Create MS-SQL Script?	If YES, output will include a script to insert or update these error messages in your SQL Server database for Transaction Insight versions of 3.1 or later.
Commit Frequency:	Determines how many script lines will be processed before a database commit.
Create ErrMsgTrans file?	Creates entries for your customer errors. You can copy these into ErrMsgTrans.txt. Response Generator uses this file to populate variables and determine COBA dispute codes in its custom reports. You only need to generate this if you use #variables# in your custom error messages.
Create APF file?	Creates entries for the [Warning Levels] section of your APF files.
Create CustomerFSBRERRS file?	Creates entries for you to copy into your customer errors file.

3. Click **Create Files** at the bottom.
4. Use Explorer to view the files in the directory that you specified. Copy them into their target files as shown in the example below.

Example

Configuration tab:

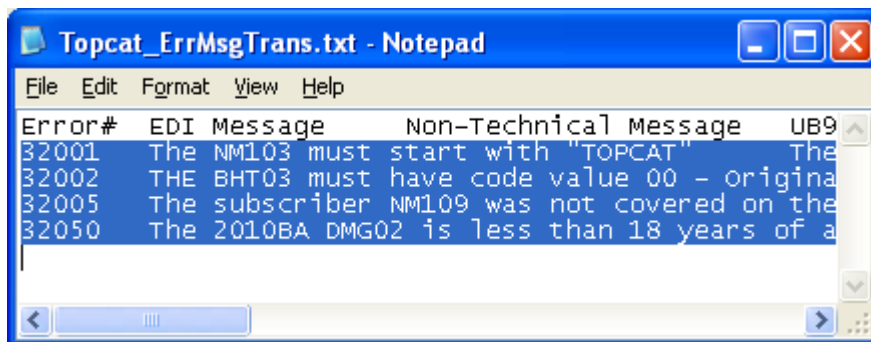
Configuration Settings		
Name	Comment	Value
Base File Path:	This is where all of the files produced by this spreadsheet will be written.	C:\temp\Topcat
Base File Name:	This value will be used as part of the filename for each of the files created by this spreadsheet's macros. See the Readme tab for details.	Topcat
Version:	User-defined version value	1.0
Create Pre310 ORACLE Script?	Should we create a script for an ORACLE database version prior to 3.1.0? (yes/no)	no
Create Pre310 MS-SQL Script?	Should we create a script for a Microsoft SQL Server database version prior to 3.1.0? (yes/no)	no
Create ORACLE Script?	Should we create a script for an ORACLE database (3.1.0+) ? (yes/no)	yes
Create MS-SQL Script?	Should we create a script for a Microsoft SQL Server database (3.1.0+)? (yes/no)	yes
Commit Frequency:	Write a commit statement to the script for every ? insert statements.	100
Create ErrMsgTrans file?	Should we create the ErrMsgTrans.txt file used by ResponseGenerator and Importer? NOTE: This is only needed if you use replaceable parameters in your error messages. (yes/no)	yes
Create APF file?	Should we create the APF file (fragment) used by InStream? (yes/no)	yes
Create CustomerFSBRERRS file?	Should we create the FSBRERRS.txt file used by InStream? (yes/no)	yes

User Messages tab:

EDI Message	Non-Technical Message	UB92 Message	HCFA 1500 Message	NSF Message	ADA Message	Severity	HIPAA Type
Add your own error message	Add your own non-technical message	Add your own UB92 message	Add your own HCFA1500 message	Add your own NSF message	Add your own ADA message	1	8
The NM103 must start with "TOPCAT"	The Receive Name must start with					3	8
THE BHT03 must have code value 00 - Original	The transaction's purpose code must be "Original"					3	8
The subscriber NM109 was not covered on the dates in the Statement Date DTP03.	The subscriber's ID code was not covered on the claim statement's					3	8
The 2010BA DMG02 is less than 18 years of age.	The subscriber less than 18 years ago, according to the birth date.					2	8

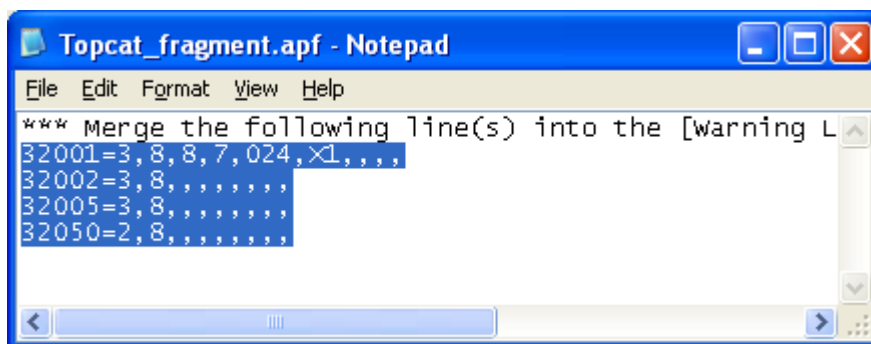
Output:

- **Topcat_ErrMsgTrans.txt** – copy the messages into your existing ErrMsgTrans.txt file. Do not copy the first line if it is already in ErrMsgTrans.txt.



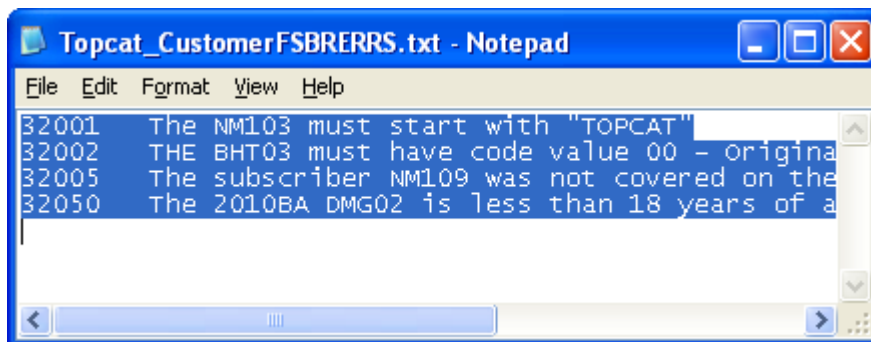
```
File Edit Format View Help
Error#  EDI Message      Non-Technical Message  UB9
32001   The NM103 must start with "TOPCAT"  The
32002   THE BHT03 must have code value 00 - original
32005   The subscriber NM109 was not covered on the
32050   The 2010BA DMG02 is less than 18 years of a
```

- **Topcat_fragment.apf** – copy the errors into the [Warning Levels] section of your existing APF files. Do not copy the first line.



```
File Edit Format View Help
*** Merge the following line(s) into the [warning L
32001=3,8,8,7,024,<1,,,
32002=3,8,,,,,,
32005=3,8,,,,,,
32050=2,8,,,,,,
```

- **Topcat_CustomerFSBRERRS.txt** –copy the errors into your existing customer errors file. This file is identified by ERRMSGFILE3 in Instream's \$dir.ini or fsdir.ini file. The default name is CustomerFSBRERRS.TXT.



```
File Edit Format View Help
32001   The NM103 must start with "TOPCAT"
32002   THE BHT03 must have code value 00 - original
32005   The subscriber NM109 was not covered on the
32050   The 2010BA DMG02 is less than 18 years of a
```

- **Topcat_UpdateErrorsInTI_MSSQL.sql** or **Topcat_UpdateErrorsInTI_ORACLE.sql** – give the appropriate script (for SQL Server or for Oracle) to your Transaction Insight database administrator.

Customer Transaction Insight ErrMsgTrans File

You can use your own ErrMsgTrans.txt file along with the default one used by Transaction Insight. Anything found in your own file will take precedence over what is in the default.

To use your custom file with Importer, add the **user** or **user_x.y.z** option to the **Instream** section of Importer.ini. Please see the comments in Importer.ini for details.