

# TIBCO Foresight® EDISIM®

## Library User's Guide

*Version 6.20.0*

*May 2021*



# Contents

<b>Contents</b>	<b>2</b>
<b>Introducing Library</b>	<b>1</b>
Intended Audience	1
Capabilities	1
Starting Library	1
Library Link	2
Tutorial	3
Tutorial - Choosing a Standard	3
Tutorial - Expanding a Transaction Set	5
Tutorial - Viewing Dictionary Listings	7
<b>Navigating</b>	<b>9</b>
Managing Library's Desktop	9
Keyboard and Mouse	10
Colors	10
Icons	11
Toolbar	11
Expanding the Tree View	12
Codes and Abbreviations	14
Opening Multiple Standards Simultaneously	15
<b>Library's Panes</b>	<b>17</b>
Primary Selection Pane	17
Detail Pane	18
Top of Detail Pane	18
Subordinates Area of Detail Pane	19
Cross-Reference and Syntax Notes Pane	20
Notes Pane	22
<b>Views</b>	<b>25</b>
Transaction Sets: Set View	25
Set View: Detail Pane	26
Set View: Cross-Reference and Syntax Notes Pane	27
Set View: Notes	28
Segments: Seg View	28
Seg View: Primary Selection Pane	28
Seg View: Detail Pane	29
Seg View: Cross-Reference and Syntax Notes Pane	29
Seg View: Notes	29
Composites: Com View	29
Com View: Primary Selection Pane	30
Com View: Detail Pane	30

Com View: Cross-Reference and Syntax Notes Pane	30
Com View: Notes	31
Elements: Elem View	31
Elem View: Primary Selection Pane	31
Elem View: Detail Pane	32
Elem View: Cross-Reference and Syntax Notes Pane	32
Elem View: Notes	32
View Menu	32
 Appendix A - Detail Pane Information	 35
Detail Pane Information for Standards	35
Detail Pane Information for Transaction Sets	36
Detail Pane Information for Loops	37
Detail Pane Information for Segments	38
Detail Pane Information for Composites	39
Detail Pane Information for Elements	41
 TIBCO Documentation and Support Services	 43
How to Access TIBCO Documentation	43
Product-Specific Documentation	43
How to Contact TIBCO Support	44
How to Join TIBCO Community	44
 Legal and Third-Party Notices	 45

# Introducing Library

---

## Intended Audience

TIBCO Foresight's Library application is intended for business analysts, EDI developers and customer support personnel, and others who need to know the structure and details about EDI standards and guidelines.

## Capabilities

Library is part of both TIBCO Foresight® EDISIM® and TIBCO Foresight® HIPAA Validator Desktop®. It lets you browse through a guideline or standard in EDISIM®'s database and see how the data should be structured.



It also displays business rules and lets you cross-reference where a segment, composite, or element is used.

## Starting Library

Ways to start Library:

- If using the EDISIM Application Manager, click the Library icon:



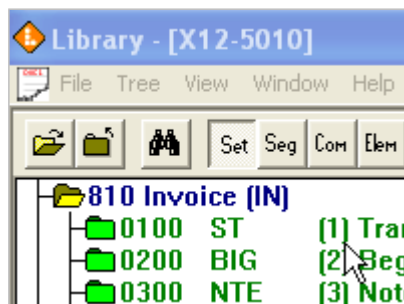
- **Start | Programs | <TIBCO\_HOME> | Desktop | Library** to browse Desktop's guidelines.
- **Start | Programs | <TIBCO\_HOME> | EDISIM | Library** to browse EDISIM's guidelines.
- The  button on the HIPAA Validator Desktop® toolbar.
- The  button on EDISIM Validator's toolbar.
- Open Windows Explorer and go to Desktop's or EDISIM's Bin folder (default is under C:\ <TIBCO\_HOME>). Then double click **Library.exe**.

### *Starting Library with ordinals*

Interpreting the SEF format requires understanding ordinals. This is described in SEFnn.pdf, the EDI Standard Exchange Format document. If you start Library with the `-c` command line option, it will display ordinals:

```
C:\WINDOWS\system32\cmd.exe
C:\Foresight\Desktop\Bin>library -c
```

Notice the ordinals in parentheses to the right of each segment and loop





## Library Link

When validating with Desktop or EDISIM Validator, Library Link opens a guideline viewer and takes you directly to the segment that you are highlighting in the bottom pane.

To use Library Link:

1. With a validation completed in Desktop or EDISIM Validator, click on a line in the bottom pane.
2. Choose **Options | Library Link**.

This opens Library and takes you to the current location in the guideline.

3. When finished reading about the item, return to Desktop or EDISIM Validator by clicking on it at the bottom of your screen.
4. Click on another segment in the bottom pane.
5. Now that you have Library Link started, click on the  or  toolbar button to go to that segment in Library.

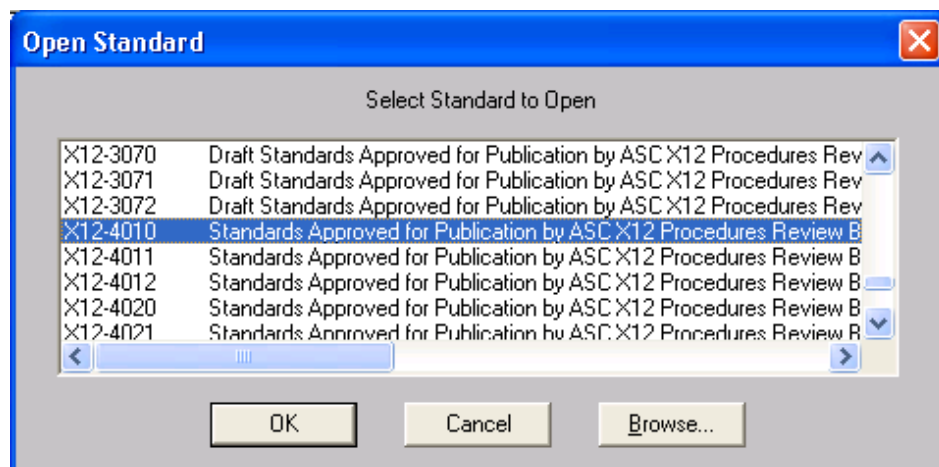
## Tutorial

This section introduces Library's main features.

### Tutorial - Choosing a Standard

1. Open Library.
2. Click **File | Open**.

You will see a list of all guidelines in the Desktop or EDISIM database.



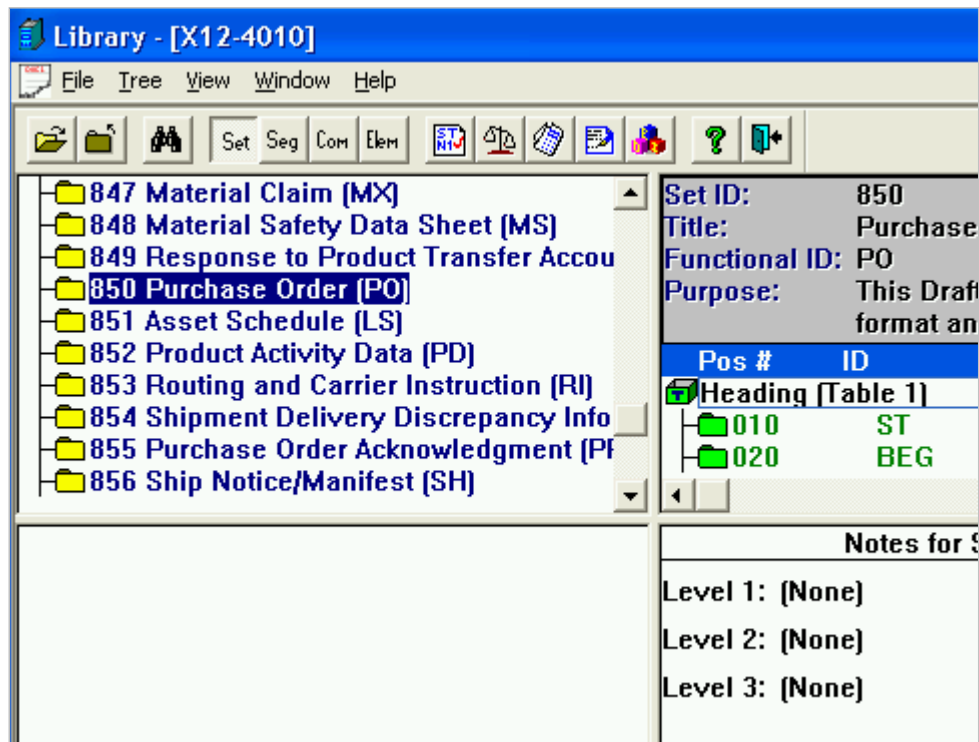
3. Double-click on **X12-4010**.

After the standard loads, Library displays the transactions in X12-4010. Notice the title on your title bar.

4. Maximize Library.

The top left pane is your Primary Selection pane. When you select something in that pane, the other panes update to show information about it.

5. Single-click the 850 transaction (blue text, yellow folder) and Library will display detailed information.



The top right pane gives a description of the document.

Below that, you will see subordinate parts of the 850.

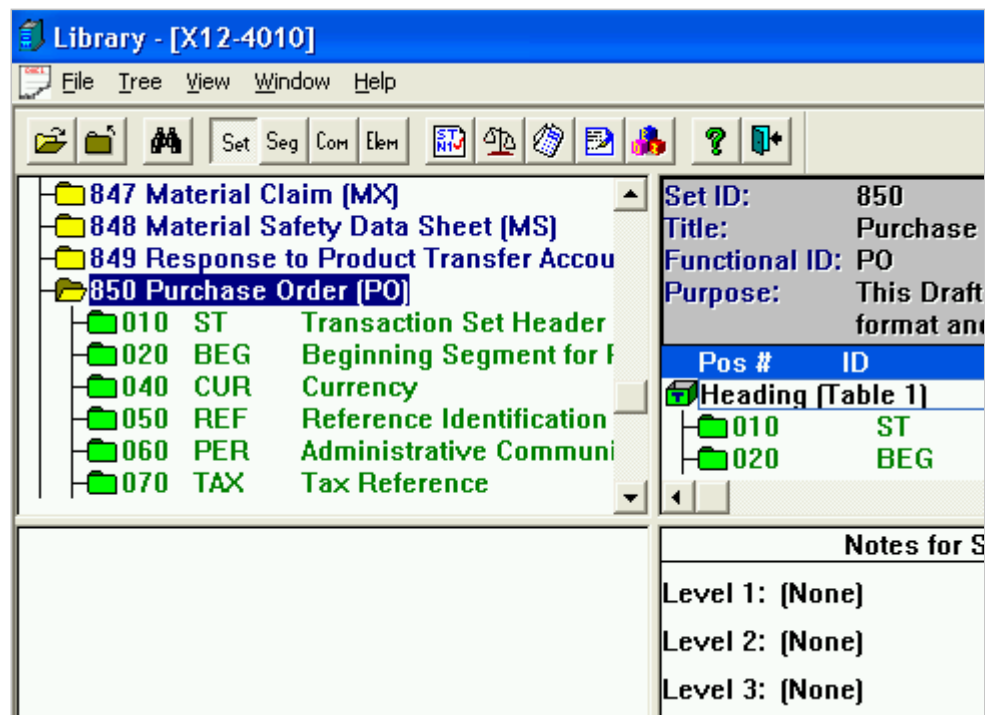
The bottom right pane shows notes, if any exist on the highlighted item.

Use the vertical and horizontal scroll bars to see information that is off the screen.

# Tutorial - Expanding a Transaction Set

To open the 850 to see the segments, elements, and code values :

1. Double-click on the 850 in the Primary Selection pane.



The light green folders are segments. The dark green folders are loops.

2. Single-click on the **020 BEG** segment.

The right-hand panes now provide information about the BEG, including showing a list of its elements.

3. Double-click on the BEG segment to see its elements.

The blue dots with black circles are elements that have code values.

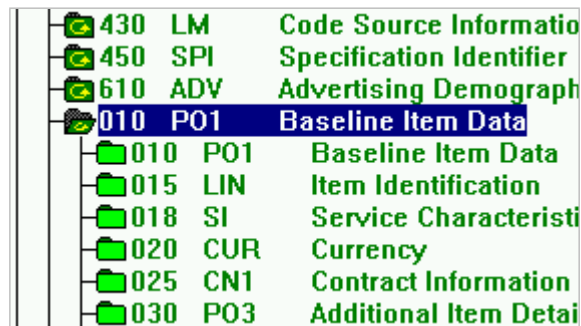


- Click on the BEG02.



All panes update to describe element 92 as used in this location. Look closely at each Library pane. The middle right pane contains the code values for element 92 when it's used in this location. The bottom left pane lists other segments in X12-4010 that contain an element 92.

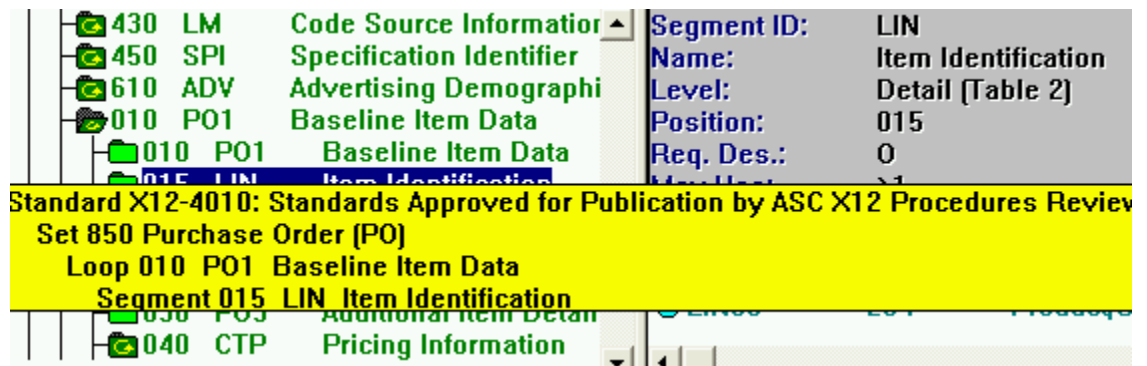
- Scroll down and open the PO1 loop at 010 in Table 2:



Notice the icons with the loopy arrows that signify a loop.

## Hierarchy

To see a yellow popup summary of the current item's hierarchy, click and hold on it.



## Views

The toolbar has buttons for **Set**, **Seg**, **Com**, and **Elem**. We have been using the **Set** view. This means that we are looking at a hierarchy that begins with a transaction set, the default view.

The other buttons take you to the dictionaries:

<b>Seg</b>	Segment dictionary - a list of all segments in the underlying X12 standard, whether they are used in an 850 or not.
<b>Com</b>	Composite dictionary - a list of all composites in the underlying X12 standard, whether they are used in an 850 or not.
<b>Elem</b>	Element dictionary - a list of all elements in the underlying X12 standard, whether they are used in an 850 or not.

## Tutorial - Viewing Dictionary Listings

### *Segment Dictionary*

Go to the segment dictionary when you want to see all segments in the whole standard, not just in the current transaction:


1. Click the **Seg** toolbar button.



An alphabetical listing shows every segment in X12-4010.

2. Double-click any segment.

You see this segment's structure right from the X12 standard, before it is modified for use in a particular location in the transaction set.

3. Click on an element with a black dot in its icon -  to see its dictionary code values.

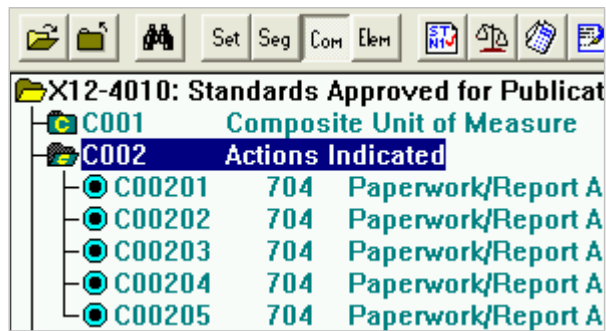
## Composite Dictionary

Go to the composite dictionary when you want to view all composites in the underlying X12 standard.

1. Click the **Com** toolbar button.

Composites are preceded by a yellow C within the folder.

2. Double-click the **C002** composite.



Each pane updates to display information about composite C002. The Cross-Reference pane shows you which segments contain a C002.

## Element Dictionary

Go to the element dictionary when you want to view all of the elements in the underlying X12 standard.

1. Click the **Elem** toolbar button.

Each element within this standard displays, in numerical order.

2. Click on element **66** - Identification Code Qualifier.

Each pane displays information about this element.

The Cross-Reference pane at the bottom left lists all segments that contain an element 66.

3. Double-click on the **NM1** segment in the cross-reference pane.

You automatically go to the Segments Dictionary (notice that the Seg button is now pushed in the toolbar), where the Identification Code Qualifier element (66) is used in the NM1 segment.

**Congratulations!** You have now learned the basics of Library.

# Navigating




---

## Managing Library's Desktop

You can adjust your screen by :

- Dragging any inside and outside border.
- Using **View | Split** and moving the mouse or arrow keys to adjust the inside borders.
- Double-clicking on the gray panes at the top right and bottom left to shrink them to one line or return them to their normal size:

Top right column normal size

Segment ID:	NM1	
Name:	Responsible Party	
Level:	Detail (Table 2)	
Position:	015	
Req. Des.:	0	
Max Use:	1	
Pos #	ID	Element
 NM101	98	Entity I
 NM102	1065	Entity T
 NM103	1035	Name L

Top right column collapsed

Seq NM1 : Responsible Party Nam		
Pos #	ID	Element
● NM101	98	Entity I
● NM102	1065	Entity T
● NM103	1035	Name L
● NM104	1036	Name F
● NM105	1037	Name M
● NM107	1039	Name S

Your screen will return to the default when you open a new guideline.

# Keyboard and Mouse

Library uses standard Windows navigation. It also uses colors and icons to identify items.

## *Keyboard*

<b><i>Alt + ...</i></b>	Performs shortcuts of menu items as noted on the menu.
<b><i>Enter</i></b>	Toggles display of the subordinate parts of a highlighted item.
<b><i>Shift + Enter</i></b>	Fully expands subordinates of the highlighted item (except for standards). For transaction sets, you may experience a short delay while the entire listing is displayed.
<b><i>Shift +Uparrow</i></b>	Moves to the parent of the highlighted item.
<b><i>Pg Up</i> or <i>Pg Dn</i></b>	Scrolls one screen at a time.
<b><i>F1</i></b>	Displays help.












## *Mouse*

<b><i>Click</i></b>	Selects an item.
<b><i>Double-click</i></b>	Selects an item and processes it (like the Enter key). Expands or collapses subordinate list.
<b><i>Right click hold</i></b>	Shows the current hierarchy.
<b><i>Shift + double-click</i></b>	Fully expands subordinates of the highlighted item.

# Colors

Yellow	Transaction set
Bright green	Segment
Dark green	Loop
Blue-green	Composite
Blue	Element
Red	Code value
Grey Text	Unused Item

# Icons

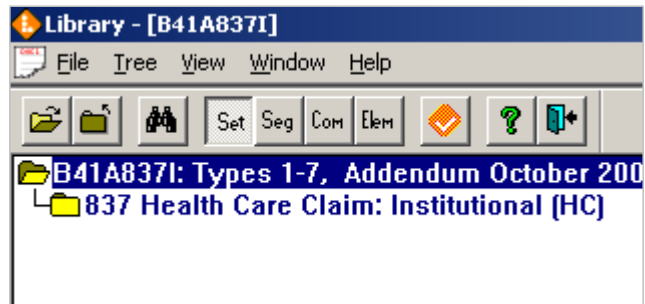
	Transaction set, subordinates not displayed
	Transaction set, subordinates displayed
	Segment, subordinates not displayed
	Segment, subordinates displayed
	Composite, subordinates not displayed
	Composite, subordinates displayed
	Loop, subordinates not displayed
	Loop, subordinates displayed
	Element without code values
	Element with code values
	Code value

# Toolbar

To see help for a toolbar button, rest your mouse cursor on it without clicking.

## Expanding the Tree View

When you open a standard, you will see a list of all transaction sets in the standard. No subordinates are displayed.

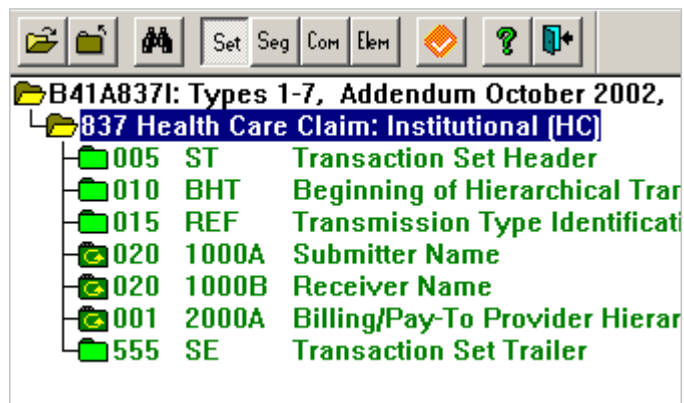


You can expand the tree by a single level or all levels.

The following figures show two views of the 837.

### *To expand one level*

- Double-click on the transaction, or
- Highlight the transaction set and press Enter.



### *To expand all subordinates*

- *Shift+double-click* on the transaction set, or
- Highlight the transaction set and press *Shift+Enter*.

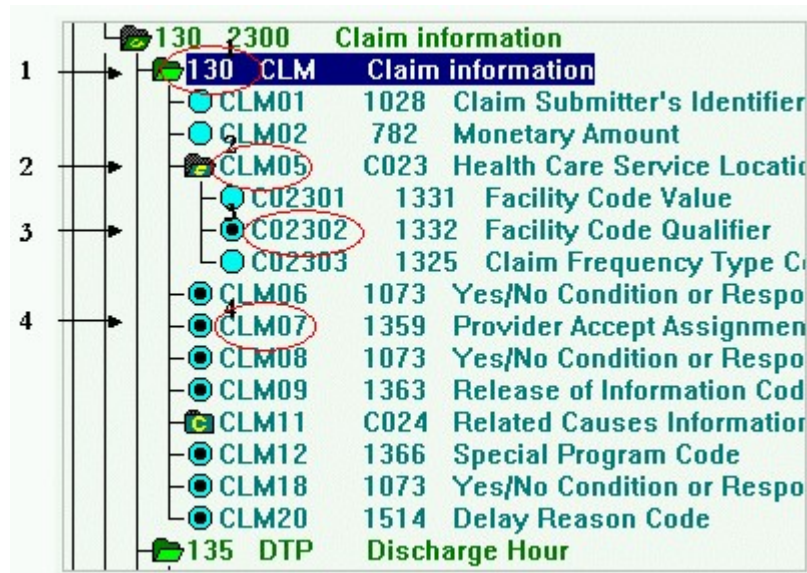
There will be a pause while Library fully expands the transaction.

B41A837I: Types 1-7, Addendum October 2002,			
837 Health Care Claim: Institutional (HC)			
005	ST	Transaction Set Header	
ST01	143	Transaction Set Identifi	
ST02	329	Transaction Set Control	
010	BHT	Beginning of Hierarchical Tran	
BHT01	1005	Hierarchical Structure C	
BHT02	353	Transaction Set Purpos	
BHT03	127	Reference Identification	
BHT04	373	Date	
BHT05	337	Time	
BHT06	640	Transaction Type Code	
015	REF	Transmission Type Identificati	
REF01	128	Reference Identification	
REF02	127	Reference Identification	
020	1000A	Submitter Name	
020	NM1	Submitter Name	
NM101	98	Entity Identifier Code	
NM102	1065	Entity Type Qualifier	



## Codes and Abbreviations

Throughout Library, you will encounter items that are referred to by both their current position and their ID. These are called Reference Designators, and they show the name of the parent item, followed by a sequence number.




In this example, the numbers point to the following:

- 1 The CLM segment is at position 130 in this transaction set.
- 2 Composite CO23 is the fifth item in the CLM segment, so its address is CLM05.
- 3 Element 1332 is the second item in this CO23, so its address is CO2302.
- 4 Element 1359 is the seventh item in the CLM, so its address is CLM07.

# Opening Multiple Standards Simultaneously

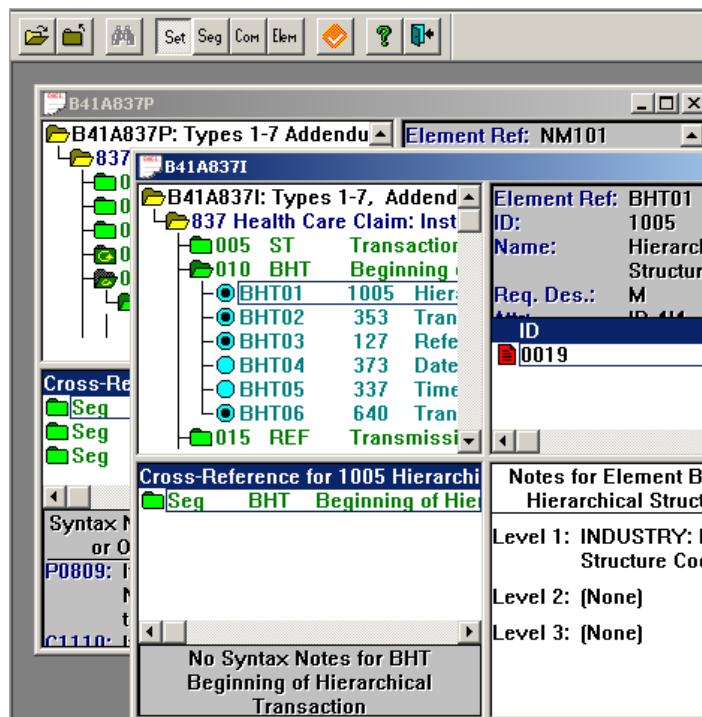
You can have several standards or guidelines open at the same time.

To do this:

1. Open the second standard.
2. Click the inner  button:



3. Arrange the windows by dragging them by their headers.
4. Arrange the panes within each window by dragging the splitter bars between panes.



If you prefer to maximize each window, move between them with the **Window** menu.



# Library's Panes

---

This section describes the purpose and structure of each pane, including:


- Primary Selection Pane
- Detail Pane
- Cross-Reference and Syntax Notes Pane
- Notes Pane

## Primary Selection Pane

The upper-left pane displays the contents of your guideline or of one of the dictionaries.

The default view is the transaction set, a hierarchical list of all items in the set, in the order in which they appear in the set.

You can also see the three dictionaries - lists of all segments, composites, or elements in the standard, regardless of whether they are used in a particular transaction set.







To change the view, use these toolbar buttons: 

For details about expanding the view, see Expanding the Tree View on page 12.

To display or hide unused items, toggle **View | Show Unused Items**.

## Detail Pane

The upper-right-hand pane contains two sections. Both provide detailed information about the item selected in the Primary Selection pane. Vertical and horizontal scroll bars appear if needed to show all information.

<b>Segment ID:</b>	CLM	
<b>Name:</b>	Claim information	
<b>Level:</b>	Detail (Table 2)	
<b>Position:</b>	130	
<b>Req. Des.:</b>	0 (Dependent)	
<b>Max Use:</b>	1	
<b>Purpose:</b>	To specify basic data about t	
<b>Semantic Notes:</b>		
	CLM02: CLM02 is the total amount of segments for this claim.	
	CLM06: CLM06 is provider signature indicates the provider signat	
Pos #	ID	Element Name
 CLM01	1028	Claim Submitter's I
 CLM02	782	Monetary Amount
 CLM05	C023	Health Care Servic
 CLM06	1073	Yes/No Condition c
 CLM07	1359	Provider Accept As
 CLM08	1073	Yes/No Condition c

### Top of Detail Pane

The top gray area of the detail pane provides descriptive information about the selected item.

A scroll bar appears along the right edge of the gray area if information is off the screen.

To collapse the gray area into a single line, double-click anywhere in the gray area when the mouse pointer displays as a thin, up-arrow. Restore it by double-clicking on the single gray line.

Information in the gray area varies by item but includes some of these:

- **Element Ref** - (elements and composites). The item's position within the segment or composite. Example: CLM01 is the first element in the CLM segment. C02301 is the first element in composite C023.
- **ID** - The X12-assigned ID for this segment, element, or composite.
- **Name** - The name of the item.
- **Level** - The table. Typically, this is Table 1 for heading information, Table 2 for detail information, and Table 3 for summary information. The number of tables varies by transaction.

- **Position** - (segments and loops). The X12 sequence position within the table. Sequence numbers repeat if a segment can appear multiple times at a given location. Example: A CLM loop has consecutive DTP segments for different kinds of dates. They all have the same position since they are variations on the X12 DTM segment at that location.
- **Req. Des.** - The requirement according to X12, followed by the requirement according to HIPAA or to your own company's guideline.  
Example: **Req. Des.: 0 [Dependent]**  
X12 says this item is optional, but this guideline says it is dependent.
- **Max Use** or **Repeat Count** - (segments and loops). How many times can this segment or loop be repeated here? **>1** means one or more times.
- **Attributes** - (elements). Data type, minimum length, and maximum length. Example: **AN 1/60** means the data is alphanumeric and can be between 1 and 60 characters in length.
- **Description** - (elements). The element's description.
- **Purpose** - From X12.
- **Comments** - From X12.
- **Semantic Notes** - From X12.
- **Business Rules** - HIPAA rules and your own company rules (created in EDISIM Standards Editor).

For specific information based on the type of item selected, see:

- Detail Pane Information for Standards on page 35
- Detail Pane Information for Transaction Sets on page 36
- Detail Pane Information for Loops on page 37
- Detail Pane Information for Segments on page 38
- Detail Pane Information for Elements on page 41

## Subordinates Area of Detail Pane

The bottom of the Detail pane lists information about the subordinates of the selected item. It is provided so that you can cursor or click down the list of items in the Primary Selection pane without having to open each item to see what's inside.

This pane is the only place where you can see code values. A red page icon precedes each code value:

<b>Element Ref:</b> BHT02	
<b>ID:</b>	353
<b>Name:</b>	Transaction Set Purpose Code
<b>Req. Des.:</b>	M
<b>Attr:</b>	ID 2/2
<b>Description:</b>	Code identifying purpose of transaction
ID	Value Definition
00	Original
18	Reissue

To display or hide unused code values, toggle **View | Show Unused**.

To move up one level in the subordinates list, double click the Title Bar in the Detail pane:

The screenshot shows the Library window with a tree view on the left and a detail pane on the right. The tree view displays a hierarchy of segments and composites. The detail pane shows the selected segment's properties. A red circle highlights the 'Pos # ID' header in the detail pane, which lists 'AMT01 522' and 'AMT02 782'.

## Cross-Reference and Syntax Notes Pane

The bottom left area of your Library window is active for segments, composites, and elements. This pane has two areas:

- The cross-references area
- The Syntax Notes area

## Cross-Reference Area

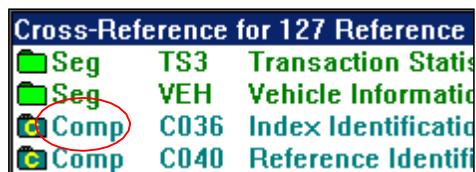
The cross-reference area at the bottom left shows all of the places within the current standard that use the selected item. The title bar on this pane displays the item being cross-referenced.

If you double-click on an item within this area, you immediately move to it in:

- The segment dictionary if it is preceded with **Seg**



- The composite dictionary if it is preceded with **Comp**



- The transaction set if it is preceded with **Set**



When using cross-referencing, keep an eye on the toolbar buttons to see whether you are in the transaction set or one of the dictionaries.

## Syntax Notes Area

When a segment or composite is selected in the Primary pane, all syntax notes attached to it display in the Syntax Notes area below the cross-references.

These are normally notes from X12 that show dependencies between elements within the segment or composite. They always start with a letter and then list the relative position of each element involved in this dependency.

If there are no syntax notes, this area will be automatically minimized to a single line height, and the title bar will read: "No Syntax Notes for..."

**Example:** If the Syntax Notes pane displays P0304, the 03 and 04 tell us these are the 3<sup>rd</sup> and 4<sup>th</sup> items within the segment. The P means they are paired and must both be used or neither used.

You will find the following types of syntax notes:

<b>P</b>	Paired or multiple	If any of the objects are used, then all must be used.
----------	--------------------	--



<b>R</b>	Required	At least one of the objects must be present.
<b>E</b>	Exclusion	Not more than one of the objects may be present.
<b>C</b>	Conditional	If the first object is present, all other objects must be present. However, any object not specified as the first may appear without requiring that the first object be present.
<b>L</b>	List Conditional	If the first object is present, then at least one of the others must be present. However, if other objects are present, the first need not be present.

You can shrink the Syntax Notes area to a height of one line by moving your mouse over the gray text until your pointer becomes a thin, vertical arrow and double-clicking. To restore the area to normal size, double-click on the single gray line.

If you have minimized the syntax notes area, you can tell an item has syntax notes if a series of dots follows the title on the single line.

## Notes Pane

The bottom right pane displays level notes. These are notes supplied by HIPAA or by the person who created the guideline in EDISIM Standards Editor.

<b>Notes for Segment 003 PRV Billing/Pay-To Provider Specialty Information</b>
<b>Level 1: Required when adjudication is known to be impacted by the provider taxonomy code and the Service Facility Provider is the same entity as the BillingProvider and/or the Pay-to Provider. In these cases, the Rendering Provider is being identified at this level for all subsequent claims in this HL batch and Loop ID-2310E is not used.</b>  <b>PRV02 qualifies PRV03.</b>
<b>Level 2: (None)</b>
<b>Level 3: Example: PRV*BI*ZZ*203BA0200N~</b>

The Notes pane will show:

- Level notes for the item highlighted in the Primary Selection pane.
- Level notes for the Code Value highlighted in the Detail pane.

- Code Value explanations for the code highlighted in the Detail pane.

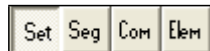
The title along the top of this area tells you where these notes are attached. In the example above, the notes are for **PRV** at position **003**.



# Views

---

## Transaction Sets: Set View



The **Set** view is the default when you open Library. It displays the list of all transaction sets within your standard. You can return to this view at any time with:

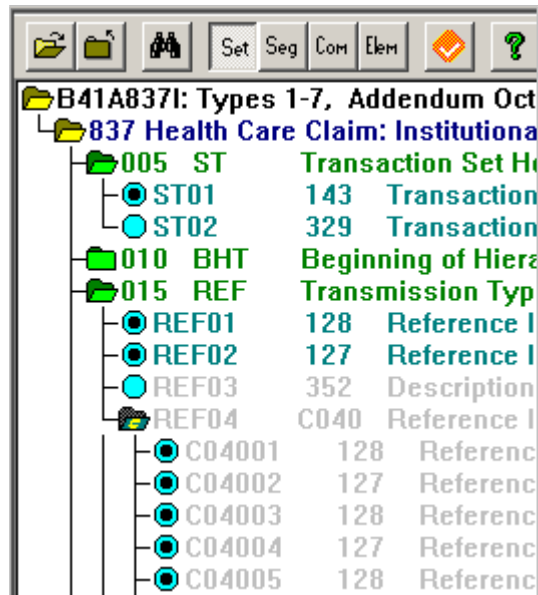
- The **Set** button on your toolbar
- **View | View Set**

When in Set view, you can expand a transaction to show its subordinate items (segments, elements, etc.).

### *Showing unused Items*

To display unused items, choose **View | Show Unused Items**. They will display as light gray text.

The example below shows an unused element, composite, and some unused subelements in light gray.



## Set View: Primary Selection Pane

When you first open a standard or guideline, the Primary Selection pane displays its transaction sets, in collapsed form.

You can double-click a set or loop to expand the view to include its direct subordinates or all subordinates (see Expanding the Tree View on page 12).

In Set view, selecting an item in the Primary Selection pane causes the other panes to display information about that item as used at that place in the transaction set.

For more information, see Primary Selection Pane on page 17.

## Set View: Detail Pane

Segment ID: REF				
Name: Transmission Type Identification				
Level: Heading (Table 1)				
Position: 015				
Req. Des.: 0 (Must Be Used)				
Max Use: 1				
Pos #	ID	Element Name	Req	Attr.
REF01	128	Reference Identification Qualifier	M	ID 2/3
REF02	127	Reference Identification	X	AN 1/30
REF03	352	Description	X	AN 1/80
REF04	C040	Reference Identifier	0	

### Gray area

The top gray area of the detail pane provides descriptive information about the selected item when it is used at the current location in the transaction set.

The information varies depending on the type of item selected. For details, see Detail Pane Information for Standards on page 35







**Subordinates area**

The bottom of the Detail pane lists information about the subordinates of the selected item when used in the current location in the transaction set.

The information varies depending on the type of item selected. For details, see:

- Detail Pane Information for Standards on page 35
- Detail Pane Information for Transaction Sets on page 36
- Detail Pane Information for Loops on page 37
- Detail Pane Information for Segments on page 38
- Detail Pane Information for Elements on page 41

If you click on an element in the Primary selection pane, you can see code values that are available at this location. To see unused codes, choose **View | Show Unused Items**.

<b>Element Ref:</b> BHT02							
<b>ID:</b>	353						
<b>Name:</b>	Transaction Set Purpose Code						
<b>Req. Des.:</b>	M						
<b>Attr:</b>	ID 2/2						
<b>Description:</b>	Code identifying purpose of tran						
<table><tr><th>ID</th><th>Value Definition</th></tr><tr><td> 00</td><td>Original</td></tr><tr><td> 18</td><td>Reissue</td></tr></table>		ID	Value Definition	 00	Original	 18	Reissue
ID	Value Definition						
 00	Original						
 18	Reissue						

**Set View: Cross-Reference and Syntax Notes Pane**

**Cross-Reference Area**

The Cross-Reference area at the bottom left answers the question: "Where else is this item used in this standard?" When you double-click on something in the cross-reference pane, you will go to that item in one of the dictionaries or in a transaction set.

For more information, see Cross-Reference and Syntax Notes Pane on page 20.

**Syntax Notes Area**

When a segment or composite is selected in the Primary pane, any syntax notes attached to it display in the Syntax Notes area below the cross-references.

For more information, see Cross-Reference and Syntax Notes Pane on page 20.

## Set View: Notes

When you select an item in the Primary Selection pane, its notes display in the bottom right pane.

When you select a code value in the Subordinates pane, its notes and explanation display in the bottom right pane.

The notes that display in Set view could be attached in any dictionary or in the transaction set. The displayed notes are the ones that took precedence. The title bar for this pane will tell you where the notes are attached.

See Notes Pane on page 22 for more information.

## Segments: Seg View



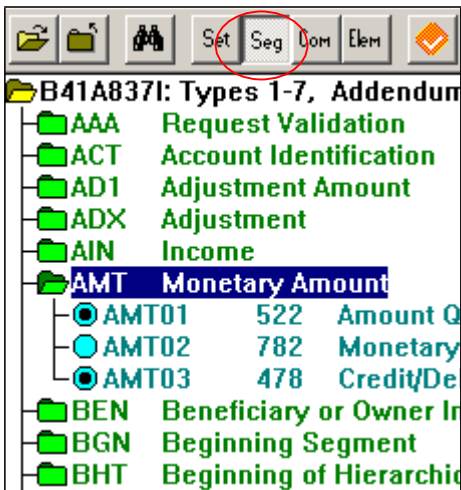
The Segment Dictionary is displayed whenever you select the **Seg** view from your toolbar, menu, or by cross-reference.

This is an alphabetical listing of all segments in the standard, regardless of which transaction sets use them. For some segments, details may be different than in Set view, where they may have been customized to suit a particular location.

From Seg view, you can examine the composites, elements, and code values of the segments before they are customized locally in a transaction set.

### Seg View: Primary Selection Pane

When segment view is selected, the Primary Selection pane presents an alphabetic list of all segments in the standard.



These are the basic X12 versions of the segments, before they are customized for a particular location in a transaction set.

For more information, see Primary Selection Pane on page 17.

## Seg View: Detail Pane

The top of the Detail pane describes the segment, composite, or element selected in the segment dictionary. The subordinates area lists its subordinates and shows details about them.

For specific information based on the type of item selected, see:

- Detail Pane Information for Standards on page 38
- Detail Pane Information for Elements on page 41

## Seg View: Cross-Reference and Syntax Notes Pane

The Cross-Reference area at the bottom left displays information that answers the question: "Where is this segment, composite, or element used in this standard?" If the highlighted item is a:

- **Segment**, you'll see all the transaction sets that use it
- **Composite**, you'll see the segments that use it
- **Element**, you'll see the segments and composites that use it, with composites listed last.

The Syntax Notes area shows all syntax notes attached to the segment.

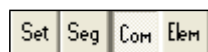
For more information, see Cross-Reference and Syntax Notes Pane on page 20.

## Seg View: Notes

In Seg view, you see notes attached in the segment, composite, and element dictionaries. You do not see notes attached to items in the transaction set. The title bar for this pane will tell you where the note is attached.

For general information about this pane, see Notes Pane on page 22.

# Composites: Com View





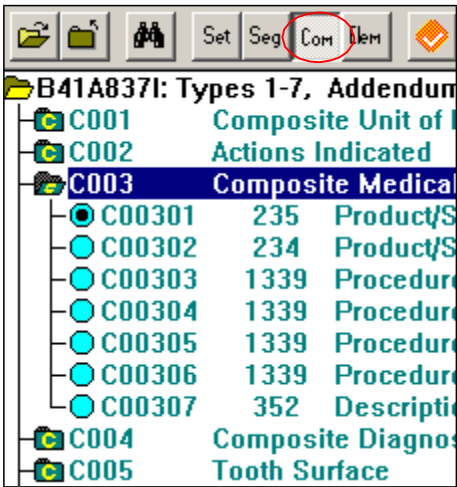
The Composite Dictionary displays when you select the **Com** view from your toolbar, menu, or by cross-reference. This dictionary lists all composites in the X12 standard, regardless of which transaction sets use them.

You can open a composite and see its sub-elements and code values as they are defined in the dictionary.

### Com View: Primary Selection Pane

When composite view is selected, the Primary Selection pane displays all composites numerically.

You can double-click a composite to display its subordinates (see Expanding the Tree View on page 12 for more information).



Since composites are groups of elements, they hold no direct values. The sub-elements within the composite may have values. All composite names start with C or S and are preceded by green folders with a yellow letter C.

For overview information, see Primary Selection Pane on page 17.

### Com View: Detail Pane

The Detail pane describes the selected composite or subelement as used in the Composite dictionary. It also displays subordinates of the selected item.

For specific information based on the type of item selected, see Detail Pane Information for Elements on page 41.

### Com View: Cross-Reference and Syntax Notes Pane

In the Composite dictionary, the Cross-Reference area (bottom left pane) displays information that answers the question: "Where is this composite or sub-element used in this standard?" If the highlighted item is a:

- **Composite**, you'll see the segments that use it.
- **Sub-element**, you'll see the composites and segments that use it, with composites listed last.

When a composite or element is selected in the Primary pane, all syntax notes attached to it display in the area below the cross-references. If there are no syntax notes, this area will be automatically minimized to a single line, and the title bar will read: "No Syntax Notes for..."

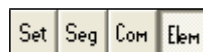
For more information, see Cross-Reference and Syntax Notes Pane on page 20.

## Com View: Notes

In Com view, you see notes attached in the composite and element dictionaries. The title bar for this pane will tell you where the note is attached.

For general information about this pane, see Notes Pane on page 22.

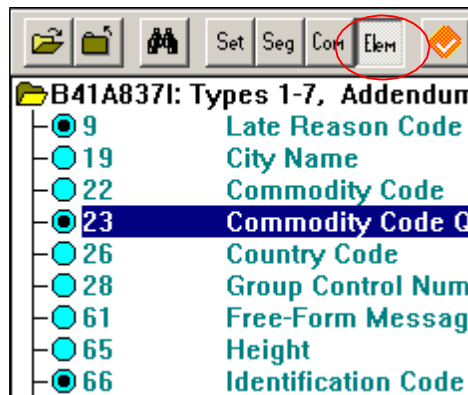
## Elements: Elem View



The Element Dictionary opens whenever you select the **Elem** view from your toolbar or menu. This dictionary gives you a numerical listing of all elements in the base X12 standard, regardless of which transaction sets, segments, or composites use them.

### Elem View: Primary Selection Pane

In Element view, the Primary Selection pane displays a numeric list of all elements in the standard, whether used in a transaction set or not.



Since an element is the lowest level of organization, it cannot be expanded or contracted.

If the element icon has a black dot in its blue circle, it has code values attached to it. Click on the icon to view these values.

For more information, see Primary Selection Pane on page 17.

## Elem View: Detail Pane

The Detail pane describes the selected element in the Element dictionary. It also displays code values for the selected element.

For specific information, see Detail Pane Information for Elements on page 41.

## Elem View: Cross-Reference and Syntax Notes Pane

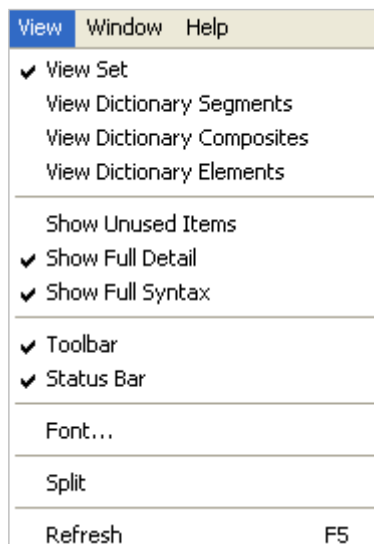
There are no syntax notes for elements.

## Elem View: Notes

In Elem view, you will only see notes that are attached to elements or code values in the element dictionary. For general information about this pane, see Notes Pane on page 22.

# View Menu

The View menu has these choices:



### View Set

Show the transaction sets. This is the default view when starting Library. It is the same as clicking the **Set** button on the toolbar. See **Transaction Sets: Set View** on page 25.

### **View Dictionary Segments**

Show the segment dictionary. This is the same as clicking the **Seg** button on the toolbar. Use it to display an alphabetical listing of all segments in the standard, along with their subordinate composites, elements, and code values. See **Segments: Seg View** on page 28.

### **View Dictionary Composites**

Show the composite dictionary. This is the same as clicking the **Com** button on the toolbar. Use it to show a numerical listing of all composites in the standard, along with their subordinate sub-elements and code values. See **Composites: Com View** on page 29.

### **View Dictionary Elements**

Show the element dictionary. This is the same as clicking the **Elem** button on the toolbar. Use it to call a listing of all elements in the standard, along with their code values. See **Elements: Elem View** on page 31.

### **Show Unused Items**

This is a toggle controlling whether your screen displays items and codes that are not being used in the particular standard. Default is **Off**. This has no effect in the element dictionary.

### **Show Full Detail**

This is a toggle controlling whether the gray area of the detail pane displays or is collapsed to one line. It is equivalent to double-clicking on this area to minimize or restore it.

### **Show Full Syntax**

This is a toggle controlling whether the gray area of the Syntax section displays or is collapsed to one line. It is the same as double-clicking on this area to minimize or restore it.

### **Toolbar**

This is a toggle controlling whether the toolbar displays.

### **Status Bar**

This is a toggle controlling display of the status bar along the bottom.

### **Font**

This lets you choose a font type and size. Default is 10-point System.

### **Split**

This gives you a black "cross" over the inside borders of the Library window, which you use to adjust the size of the individual panes. It is equivalent to dragging the splitter bars.

### **Refresh**

This refreshes your screen display.



# Appendix A - Detail Pane Information


---

## Detail Pane Information for Standards

In Views: All

Highlight a standard in the Primary Selection pane to see the following information in the top Detail pane:

<b>Standard ID</b>	ID of the published standard.
<b>Name</b>	Name of the published standard.
<b>Version</b>	Version of the published standard.
<b>Release</b>	Release of the published standard.

<b>Standard ID:</b> B41A837I		
<b>Name:</b> Types 1-7, Addendum October 2002, H [837-Q3]		
<b>Version:</b> 004		
<b>Release:</b> 010		
<b>Industry ID:</b> X096A1		
<b>ID</b>	<b>Func ID</b>	<b>Set Name</b>
 837	HC	Health Care Claim: Institutional

# Detail Pane Information for Transaction Sets

In Views: Set

Highlight a transaction set. You will see this information in the top Detail pane:

<b>Set ID</b>	Transaction set identifier.
<b>Title</b>	Transaction set title.
<b>Functional ID</b>	Functional group ID is used in the GS segment to introduce a new functional group.
<b>Purpose</b>	Boilerplate text explaining the purpose of the transaction set.
<b>Transaction Set</b>	Comments and Notes Comments and notes from the originating standard.

<b>Set ID:</b>	837
<b>Title:</b>	Health Care Claim: Institutional
<b>Functional ID:</b>	HC
<b>Purpose:</b>	This Draft Standard for Trial Use contains the data contents of the Health Care Claim use within the context of an Electronic Data environment. This transaction set can be used to transmit claim billing information, encounter information, providers of health care services to payers, intermediaries, billers, and claims clearinghouses.

Pos #	ID	Segment Name
Heading (Table 1)		
005	ST	Transaction Set Header
010	BHT	Beginning of Hierarchical Transaction
015	REF	Transmission Type Identification

# Detail Pane Information for Loops

## In Views: Set

You can see information about loops in two places:

- At the top of the Detail pane when you highlight a loop in the Primary Selection pane.
- At the bottom of the Detail pane whenever you highlight a standard in the Primary Selection pane. You may need to use the horizontal scroll bar to see all columns.

**Segment Loop ID** This is usually the ID of the first segment in the loop, but it can be any 4 alphanumeric characters.

**Name** The name of the first segment in the loop.

**Level** The transaction set area or table: usually heading, detail, or summary.

**Position** The position of the first segment in the loop.

**Req Des** The requirement designator for the loop according to X12: M=mandatory, O=optional, C=conditional, F=floating.  
  
For requirement according to HIPAA or the company, open the loop and look at the Req Des. for its first segment. The information in parentheses is the user attribute - the usage according to HIPAA or a company. Business rules change the user attribute but not the Req Des, which comes from the underlying standard.

**Repeat Count** The maximum number of times this loop can appear here. >1 means indefinite.

Segment Loop ID: 2000A		
Name: Billing/Pay-To Provider Hierarchica		
Level: Detail [Table 2]		
Position: 001		
Req. Des.: M		
Repeat Count: >1		
Pos #	ID	Segment Name
001	HL	Billing/Pay-To Provider Hierarchica
003	PRV	Billing/Pay-To Provider Specia
010	CUR	Foreign Currency Information
015	2010AA	Billing Provider Name
015	2010AB	Pay-To Provider Name
001	2000B	Subscriber Hierarchical Level



# Detail Pane Information for Segments

**In Views:** Set and Seg

**Where:** You can see this information in two places:

- At the top of the Detail pane whenever you highlight a segment in the Primary Selection pane.
- At the bottom of the Detail pane whenever you highlight a standard in the Primary Selection pane. You may need to use the horizontal scroll bar to see all columns.

<b>Segment ID</b>	An ID (3 characters or less) assigned by X12. It is unique within the standard.
<b>Name</b>	A short descriptive name for the segment.
<b>Position</b>	(Set view) The position or sequence number of the segment within the table.
<b>Req Des or (User Attribute)</b>	<p>(Set view) The requirement designator for the segment within transaction set, according to X12: M=mandatory, O=optional, C=conditional, F=floating.</p> <p>Information in parentheses is the user attribute - the usage according to HIPAA or a company. Business rules change the user attribute but not the Req Des, which comes from the underlying standard.</p>
<b>Max Use</b>	(Set view) The maximum number of times this segment or loop can be repeated at this location in the transaction set. >1 means one or more times.
<b>Purpose</b>	The segment's purpose.
<b>Note</b>	Note that is part of the X12 standard.
<b>Semantic Notes</b>	Additional X12 information about the segment's elements and their relationship with one another. The element is identified by its position in the segment: ST01 means the first element in the ST segment. A semantic note is considered part of the X12 standard.
<b>Comments</b>	Additional information about an element in the context of a particular segment. The element is identified by its position in the segment: ST01 means the first element in the ST segment. A comment is not considered part of the standard.
<b>Business Rules</b>	HIPAA or company business rules attached to this segment.

<b>Segment ID:</b>	NM1
<b>Name:</b>	Billing Provider Name
<b>Level:</b>	Detail (Table 2)
<b>Position:</b>	015
<b>Req. Des.:</b>	0 (Must Be Used)
<b>Max Use:</b>	1
<b>Purpose:</b>	To supply the full name of an individual or organizational entity
<b>Semantic Notes:</b>	NM102: NM102 qualifies NM103.
<b>Comments:</b>	NM110: NM110 and NM111 further define the type of entity in NM101.
<b>Business Rules:</b>	<ol style="list-style-type: none"> <li>1. ALWAYS call External Routine 'BusinessRules.Variable.SetVar' with parameter "2010AANeedID "OFF"</li> <li>2. ALWAYS call External Routine</li> </ol>

## Detail Pane Information for Composites

**In Views:** Set, Seg, and Com.

You can see this information in two places:

- At the top of the Detail pane whenever you highlight a composite in the Primary Selection pane.
- At the bottom of the Detail pane when you highlight a segment (one containing a composite) in the Primary Selection pane. The composites are listed along with elements in the segment, and have a green folder icon with a yellow “C.”

### Pos # or Composite Ref

(Set or Seg views). The composite's reference designator within the segment. The first part is the ID of the enclosing segment and the second part is a sequence number within the enclosing segment. Example: UNH01 means the first item (01) in the UNH segment.




### ID

The ID of the composite, a 4-digit code that begins with C and that is unique within the standard.

### Name or Element Name

A short descriptive name for the composite.

<b>Req Des or (User Attribute)</b>	<p>(Set or Seg View) The requirement designator for the composite in the current segment. M means it is mandatory, O means it is optional, C means it is conditional, and X means X12 says that its requirement depends on the presence of another element or composite.</p> <p>Information in parentheses is the user attribute - the usage according to HIPAA or a company. Business rules change the user attribute but not the Req Des, which comes from the underlying standard.</p>
<b>Purpose</b>	The purpose of the composite.
<b>Semantic Notes</b>	Additional information about a subelement in the context of a particular composite, or it can show the relationship among subelements when certain codes are present. A semantic note is considered part of the standard.
<b>Comments</b>	Comments are like semantic notes, but are not considered part of the standard.
<b>Business Rules</b>	Rules that are set up by HIPAA or individual companies.

<b>Composite Ref:</b> CLM05		
<b>ID:</b> C023		
<b>Name:</b> Health Care Service Location Information		
<b>Req. Des.:</b> O (Must Be Used)		
<b>Purpose:</b> To provide information that identifies the place of service or the type of bill related to the location at which a health care service was rendered		
<b>Semantic Notes:</b>		
C023-02: C023-02 qualifies C023-01 and C023-03.		
	<b>Pos #</b>	<b>ID</b>
	C02301	1331
	C02302	1332
	C02303	1325
		<b>Element Name</b>
		Facility Code Value
		Facility Code Qualifier
		Claim Frequency Type Code

# Detail Pane Information for Elements

## In Views: All

You can see this information in two places:

- At the top of the Detail pane when you highlight an element in the Primary Selection pane.
- At the bottom of the Detail pane when you highlight a composite or segment in the Primary Selection pane. You may need to use the horizontal scroll bar to see all columns. The elements and composites will appear together if you have a segment highlighted.

<b>Element Ref or Pos #</b>	The first part is the ID of the enclosing item and the second part is a position number within the enclosing item. Example: TAX02 means the second item (02) in the TAX segment. (Set, Seg, Com views) The element's reference designator within the segment or composite.
<b>ID</b>	Element ID -- a number that is unique within the standard.
<b>Name</b>	A short descriptive name for the element.
<b>Req Des (or User Attributes)</b>	(Set, Seg, Com views) The requirement designator for the element within this transaction set M=mandatory, O=optional, X=X12 Its usage depends on the presence of another element.  Information in parentheses is the user attribute - the usage according to HIPAA or a company. Business rules change the user attribute but not the Req Des, which comes from the underlying standard.
<b>Type</b>	(Elem view) Data type of the values (R for real, N for numeric, DT for date, etc.).
<b>Min/Max</b>	The minimum and maximum number of characters for the data in this element.
<b>Description</b>	The element's description, indicating what information is to be conveyed in the element.
<b>Business Rules</b>	Company or HIPAA business rules.

<b>Element Ref:</b>	REF01
<b>ID:</b>	128
<b>Name:</b>	Reference Identification Qualifier
<b>Req. Des.:</b>	M
<b>Attr:</b>	ID 2/3
<b>Description:</b>	Code qualifying the Reference Identification
<b>Business Rules:</b>	Variable Name: P2010CAREF01ReferenceQualifier 1. If 2000BSBR09ClaimId EQ 'MA' or 2000BSBR09ClaimId EQ 'IG' or 2000BSBR09ClaimId EQ 'SY' then P2010CAREF01 = '1W'

ID	Value Definition
1W	Member Identification Number
23	Client Number
IG	Insurance Policy Number
SY	Social Security Number

# TIBCO Documentation and Support Services

---

## How to Access TIBCO Documentation

Documentation for TIBCO products is available on the TIBCO Product Documentation website, mainly in HTML and PDF formats.

The TIBCO Product Documentation website is updated frequently and is more current than any other documentation included with the product. To access the latest documentation, visit <https://docs.tibco.com>.

## Product-Specific Documentation

Documentation for TIBCO® Foresight® EDISIM® is available on the [TIBCO Foresight® EDISIM® Documentation page](#).

The following documents for this product can be found on the TIBCO Documentation site:

- *TIBCO Foresight® EDISIM® Release Notes*
- *TIBCO Foresight® EDISIM® Data Types*
- *TIBCO Foresight® EDISIM® Documentation and Demo Data Index*
- *TIBCO Foresight® EDISIM® Supported File Formats*
- *TIBCO Foresight® EDISIM® Installation Guide*
- *TIBCO Foresight® EDISIM® Introduction to EDISIM®*
- *TIBCO Foresight® EDISIM® DocStarter: Creating a Guideline from EDI Data*
- *TIBCO Foresight® EDISIM® Guideline Merge*
- *TIBCO Foresight® EDISIM® Document Builder User's Guide*
- *TIBCO Foresight® EDISIM® Error Message Numbers, Editing, and Management*
- *TIBCO Foresight® EDISIM® Validator User's Guide*
- *TIBCO Foresight® EDISIM® Using Flat Files*
- *TIBCO Foresight® EDISIM® Library User's Guide*
- *TIBCO Foresight® EDISIM® Validation Profile Files (APF)*
- *TIBCO Foresight® EDISIM® Using XML*
- *TIBCO Foresight® EDISIM® Comparator User's Guide*
- *TIBCO Foresight® EDISIM® Analyzer User's Guide*
- *TIBCO Foresight® EDISIM® Standards and Guidelines Reference Manual*
- *TIBCO Foresight® EDISIM® Test Data Generator User's Guide*
- *TIBCO Foresight® EDISIM® Self-Paced Tutorial: Introduction to EDISIM® (X12 Standards)*

- *TIBCO Foresight® EDISIM® Self-Paced Tutorial: Introduction to EDISIM® EDIFACT D99A Orders*
- *TIBCO Foresight® EDISIM® Standards Editor User's Guide*
- *TIBCO Foresight® EDISIM® Business Rules*

## **How to Contact TIBCO Support**

You can contact TIBCO Support in the following ways:

- For an overview of TIBCO Support, visit <http://www.tibco.com/services/support>.
- For accessing the Support Knowledge Base and getting personalized content about products you are interested in, visit the TIBCO Support portal at <https://support.tibco.com>.
- For creating a Support case, you must have a valid maintenance or support contract with TIBCO. You also need a user name and password to log in to <https://support.tibco.com>. If you do not have a user name, you can request one by clicking Register on the website.

## **How to Join TIBCO Community**

TIBCO Community is the official channel for TIBCO customers, partners, and employee subject matter experts to share and access their collective experience. TIBCO Community offers access to Q&A forums, product wikis, and best practices. It also offers access to extensions, adapters, solution accelerators, and tools that extend and enable customers to gain full value from TIBCO products. In addition, users can submit and vote on feature requests from within the [TIBCO Ideas Portal](#). For a free registration, go to <https://community.tibco.com>

## Legal and Third-Party Notices

---

SOME TIBCO SOFTWARE EMBEDS OR BUNDLES OTHER TIBCO SOFTWARE. USE OF SUCH EMBEDDED OR BUNDLED TIBCO SOFTWARE IS SOLELY TO ENABLE THE FUNCTIONALITY (OR PROVIDE LIMITED ADD-ON FUNCTIONALITY) OF THE LICENSED TIBCO SOFTWARE. THE EMBEDDED OR BUNDLED SOFTWARE IS NOT LICENSED TO BE USED OR ACCESSED BY ANY OTHER TIBCO SOFTWARE OR FOR ANY OTHER PURPOSE.

USE OF TIBCO SOFTWARE AND THIS DOCUMENT IS SUBJECT TO THE TERMS AND CONDITIONS OF A LICENSE AGREEMENT FOUND IN EITHER A SEPARATELY EXECUTED SOFTWARE LICENSE AGREEMENT, OR, IF THERE IS NO SUCH SEPARATE AGREEMENT, THE CLICKWRAP END USER LICENSE AGREEMENT WHICH IS DISPLAYED DURING DOWNLOAD OR INSTALLATION OF THE SOFTWARE (AND WHICH IS DUPLICATED IN THE LICENSE FILE) OR IF THERE IS NO SUCH SOFTWARE LICENSE AGREEMENT OR CLICKWRAP END USER LICENSE AGREEMENT, THE LICENSE(S) LOCATED IN THE "LICENSE" FILE(S) OF THE SOFTWARE. USE OF THIS DOCUMENT IS SUBJECT TO THOSE TERMS AND CONDITIONS, AND YOUR USE HEREOF SHALL CONSTITUTE ACCEPTANCE OF AND AN AGREEMENT TO BE BOUND BY THE SAME.

This document is subject to U.S. and international copyright laws and treaties. No part of this document may be reproduced in any form without the written authorization of TIBCO Software Inc.

TIBCO, the TIBCO logo, the TIBCO O logo, and EDISIM are either registered trademarks or trademarks of TIBCO Software Inc. in the United States and/or other countries.

Java and all Java based trademarks and logos are trademarks or registered trademarks of Oracle and/or its affiliates.

All other product and company names and marks mentioned in this document are the property of their respective owners and are mentioned for identification purposes only.

This software may be available on multiple operating systems. However, not all operating system platforms for a specific software version are released at the same time. See the readme.txt file for the availability of this software version on a specific operating system platform.

THIS DOCUMENT IS PROVIDED "AS IS" WITHOUT WARRANTY OF ANY KIND, EITHER EXPRESS OR IMPLIED, INCLUDING, BUT NOT LIMITED TO, THE IMPLIED WARRANTIES OF MERCHANTABILITY, FITNESS FOR A PARTICULAR PURPOSE, OR NON-INFRINGEMENT.

THIS DOCUMENT COULD INCLUDE TECHNICAL INACCURACIES OR TYPOGRAPHICAL ERRORS. CHANGES ARE PERIODICALLY ADDED TO THE INFORMATION HEREIN; THESE CHANGES WILL BE INCORPORATED IN NEW EDITIONS OF THIS DOCUMENT. TIBCO SOFTWARE INC. MAY MAKE IMPROVEMENTS AND/OR CHANGES IN THE PRODUCT(S) AND/OR THE PROGRAM(S) DESCRIBED IN THIS DOCUMENT AT ANY TIME.

THE CONTENTS OF THIS DOCUMENT MAY BE MODIFIED AND/OR QUALIFIED, DIRECTLY OR INDIRECTLY, BY OTHER DOCUMENTATION WHICH ACCOMPANIES THIS SOFTWARE, INCLUDING BUT NOT LIMITED TO ANY RELEASE NOTES AND "READ ME" FILES.

This and other products of TIBCO Software Inc. may be covered by registered patents. Please refer to TIBCO's Virtual Patent Marking document (<https://www.tibco.com/patents>) for details.

Copyright © 1991-2021. TIBCO Software Inc. All Rights Reserved.