



TIBCO Foresight® EDISIM®

Introduction to EDISIM®

Version 6.21.0 | January 2025

Contents

Contents	2
Introduction to TIBCO Foresight® EDISIM®	3
Installation	4
Concurrent Use of EDISIM Components in Windows	5
Getting Started	7
Starting EDISIM Components	8
EDSIM Application Manager	8
Opening EDISIM Application Manager	8
Using EDISIM Application Manager	9
TIBCO Documentation and Support Services	15
Legal-and-Third-Party-Notices	17

Introduction to TIBCO Foresight® EDISIM®

EDISIM® Components

EDISIM has the following components to help you increase productivity and reduce risks associated with EDI:

- **Standards Editor** lets you start with a published standard and create your own customized guideline or MIG from it. These feed into all other parts of EDISIM and into all other TIBCO Foresight products.
- **Document Builder** prints a finished guideline or MIG created with Standards Editor. You can give this document to each party involved in the trading relationship.
- **EDISIM Validator**¹ checks EDI data for compliance to a published standard or a guideline or MIG created with Standards Editor. These include flat file, EANCOM, EDIFACT, HIPAA EDI, X12, VICS, UCS, NCPDP, NSF, UB92, and XML. This is a newer validation tool than Analyzer and supports more business rules.
 - **Analyzer**^{*} EDI data for compliance to a published standard or a guideline or MIG created with Standards Editor. These include EANCOM, EDIFACT, GENCOD, HIPAA EDI, X12, VICS, UCS, ODETTE, and TRADACOMS.
 - **Standards Reference** is a read-only version of Standards Editor, allowing you to safely review and share the details about a guideline, without fear of unwanted changes.
 - **Library**^{*} is a guideline viewer that shows all parts of the selected item in a convenient, one-screen display. It also teams up with EDISIM Validator to show the relevant guideline specifications for each diagnostic or line of data.
 - **Test Data Generator**^{*} lets you create test EDI data based on published standards, or guidelines and MIGs created with Standards Editor.
 - **Comparator**² lets you compare two published standards, guidelines, or MIGs.

¹Not available with TIBCO Foresight® EDISIM® DocSuite.

²** Not available with TIBCO Foresight® EDISIM® DocSuite.

**

You get a report of the differences, which you can browse on the screen or print. You can selectively or globally migrate user changes from one guideline to another.

Other TIBCO Foresight products - licensed separately:

TIBCO Foresight has a number of other products that use the guidelines that you develop in EDISIM, including:

Product	Function
TIBCO Foresight® Instream®	Validates various types of data in batch or production mode, including all HIPAA types.
TIBCO Foresight® HIPAA Validator® Desktop	Validates EDI data at your desktop, including all HIPAA types.
TIBCO Foresight® Community Manager®	Web portal where your partners can validate their own EDI data against your guidelines
TIBCO Foresight® Transaction Insight®	Business activity monitoring web portal for EDI data.

What You Need to Run EDISIM

Please see the **TIB_fsp_edisim_<n.n.n>_readme.txt** file that accompanies in EDISIM for system requirements information.

Installation

Full instructions for installation are in **TIB_fsp_edisim_<n.n>_installation.pdf**. This file also contains information and announcements about the current version.

Installing Additional Standards

You may decide to install more standards after you have already installed EDISIM. To do this, rerun the installation program. Follow the prompts, choosing **Standards Only**.

Newly-released standards can be downloaded from TIBCO Support Web:

1. Sign into TIBCO Support (<https://support.tibco.com>) using your credentials.
2. Select Downloads > Hotfixes > Available Downloads.
3. Click on Foresight.
4. Select updates as desired.

Concurrent Use of EDISIM Components in Windows

You can have multiple EDISIM components open at once, assuming that you have enough memory and a large enough Windows swap file. However, modules that write to the database (Standards Editor and Comparator target) must have exclusive use of a guideline or MIG.

Program trying to open guideline or MIG							
	SE	Comp target	Comp base	SR	DB	Ana/ Valid	TD G
	SE	X	X	X	X	X	X
Comp target	X	X	X	X	X	X	X

Program trying to open guideline or MIG								
	Comp base	C	C	ü	ü	ü	ü	ü
	SR	C	C	ü	ü	ü	ü	ü
	DB	C	C	ü	ü	ü	ü	ü
	Ana	C	C	ü	ü	ü	ü	ü
	TDG	C	C	ü	ü	ü	ü	ü

Where:

X	not available
C	a copy is available
ü	available
SE	Standards Editor
Comp target	Comparator target guideline (if migration is on)
Comp base	Comparator base guideline
SR	Standards Reference
DB	Doc Builder
Ana	Analyzer
Valid	EDISIM Validator
TDG	Test Data Generator

Examples:

If guideline A is already opened for writing by Standards Editor:

- Another user cannot open it for writing.
- The same user cannot open it for writing (by using it as a Comparator migration target).
- The same user, or other users, can open it for reading, but they will see a read-only copy of the guideline/MIG as it was at the moment it was opened. Changes made while they are viewing it will not appear.

If guideline A is already opened for reading by Doc Builder:

- It cannot be opened for writing.
- It can be opened for viewing.

Help is Available

You can contact TIBCO support in the following ways:

- For an overview of TIBCO Support, visit <http://www.tibco.com/services/support>.
- For accessing the Support Knowledge Base and getting personalized content about products you are interested in, visit the TIBCO Support portal at <https://support.tibco.com>.
- For creating a Support case, you must have a valid maintenance or support contract with TIBCO. You also need a user name and password to log in to <https://support.tibco.com>. If you do not have a user name, you can request one by clicking Register on the website.

Getting Started

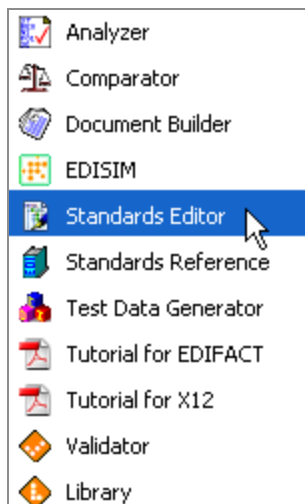
A good starting place is **X12Tutorial.pdf** or **EDIFACTTutorial.pdf** in EDISIM's Documentation directory.

From there, you can move on to the components that interest you the most. Look at the list in **Doc_and_Demo_Index_EDISIM.pdf**.

Starting EDISIM Components

Individual Components

You can start any component directly from the start menu (**Start | All Programs | <TIBCO_HOME> | EDISIM**). In this example, we start Standards Editor directly.



EDSIM Application Manager

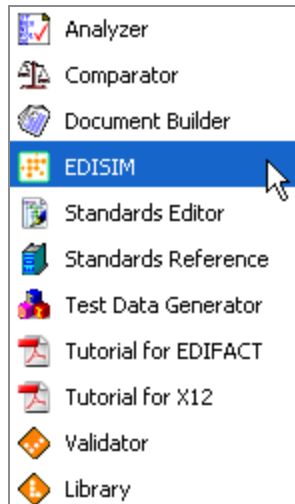
EDISIM Application Manager is a comprehensive user interface with access to all EDISIM programs plus lists of tasks and information about how to accomplish them.

Opening EDISIM Application Manager

- Use this desktop shortcut:



- Or, choose **Start | All Programs | <TIBCO_HOME> | EDISIM | EDISIM:**



Using EDISIM Application Manager

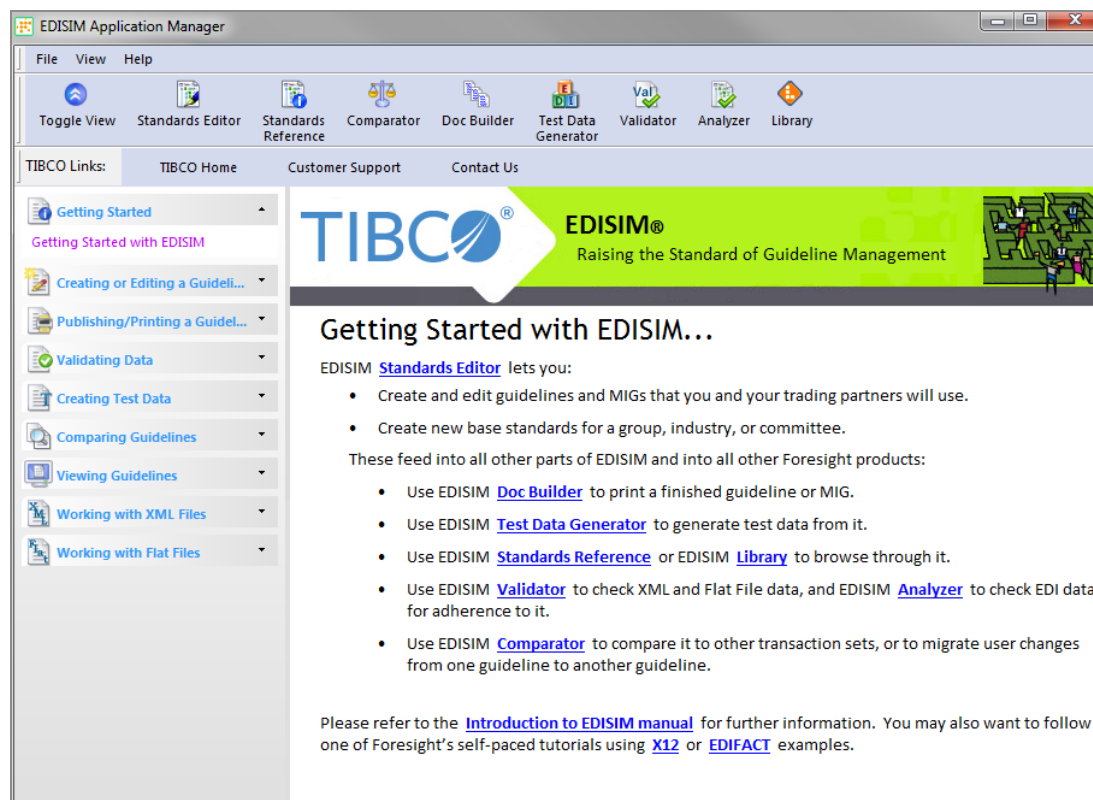
Explanations for numbers 1-4 are on the next page.

4

1

2

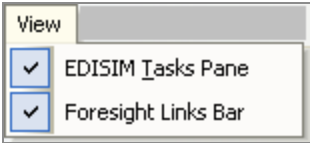
3



1 – EDISIM Drop Down Menus


Rest your mouse cursor over a menu item to see a brief explanation.

File	Launch an EDISIM component.
View	Show or conceal the EDISIM Tasks Pane or Foresight Links Bar.

File	Launch an EDISIM component.
	
Help	Access various types of help information for EDISIM including documentation, customer support, and release information.

2 – EDISIM Applications Bar

Rest your mouse cursor above a button to see a brief explanation.

Toggle View	Show or conceal the Task Area 
Other buttons	Launch an EDISIM component Note: If you are a TIBCO Foresight® EDISIM® DocSuite user, not all components are available. Inactive component icons are greyed out.

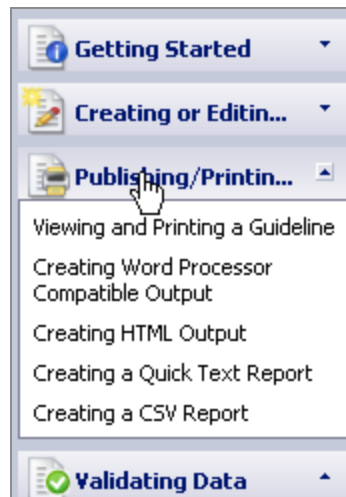
3 – TIBCO Links Bar

TIBCO Home	TIBCO Foresight’s home page.
Customer Support	Contact customer support via email or web form, see support telephone numbers, download products, and access online

TIBCO Home	TIBCO Foresight's home page.
	training.
Contact Us	Web form to send comment/inquiry to TIBCO Foresight.

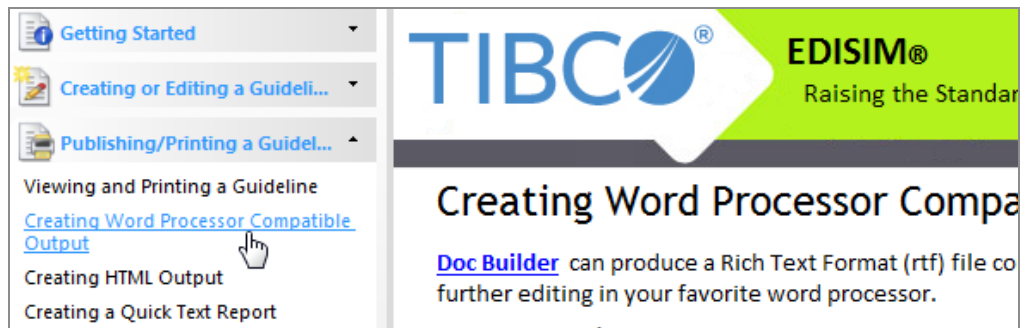
4 – EDISIM Task Pane category buttons

- **Click a task category button** to see a list of tasks related to that category.

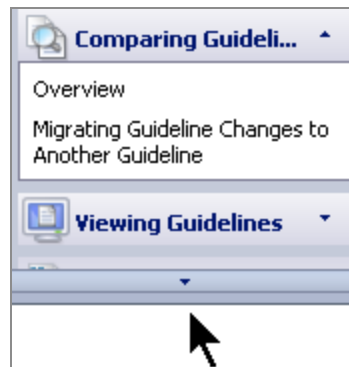


- **Click a task** to see an explanation in the right pane.

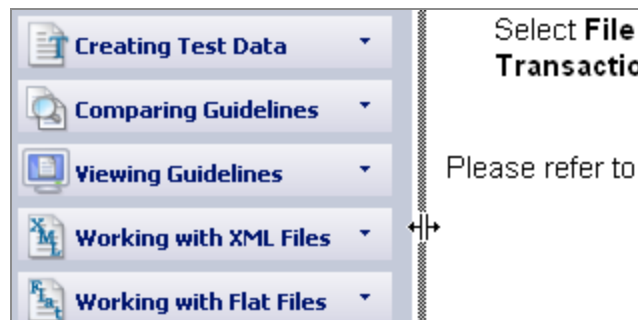
In this example, we opened the **Publishing/Printing** task category and clicked the task **Creating Word Processor Compatible Output**. The right pane displays an overview of that task, including links to start the required EDISIM application and links to display the related documentation.



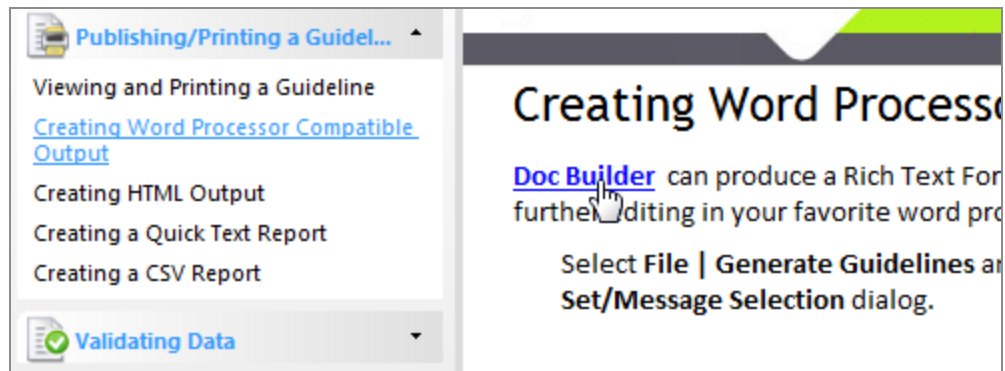
- A navigation arrow will appear at the top or bottom of the EDISIM task pane if there is more task information than will fit in the current view:



- Adjust the width of the pane by dragging the splitter bar:



- Use links in the task detail area to open EDISIM applications and documentation. (You may have to click twice if the focus is on another application.)



TIBCO Documentation and Support Services

For information about this product, you can read the documentation, contact Support, and join TIBCO Community.

How to Access TIBCO Documentation

Documentation for TIBCO products is available on the [Product Documentation website](#), mainly in HTML and PDF formats.

The [Product Documentation website](#) is updated frequently and is more current than any other documentation included with the product.

Product-Specific Documentation

The documentation for this product is available on the [TIBCO Foresight® EDISIM® Documentation](#) page.

How to Contact Support for TIBCO Products

You can contact the Support team in the following ways:

- To access the Support Knowledge Base and getting personalized content about products you are interested in, visit our [product Support website](#).
- To create a Support case, you must have a valid maintenance or support contract with a Cloud Software Group entity. You also need a username and password to log in to the [product Support website](#). If you do not have a username, you can request one by clicking **Register** on the website.

How to Join TIBCO Community

TIBCO Community is the official channel for TIBCO customers, partners, and employee subject matter experts to share and access their collective experience. TIBCO Community offers access to Q&A forums, product wikis, and best practices. It also offers access to extensions, adapters, solution accelerators, and tools that extend and enable customers to gain full value from TIBCO products. In addition, users can submit and vote on feature

requests from within the [TIBCO Ideas Portal](#). For a free registration, go to [TIBCO Community](#).

Legal-and-Third-Party-Notices

SOME CLOUD SOFTWARE GROUP, INC. (“CLOUD SG”) SOFTWARE AND CLOUD SERVICES EMBED, BUNDLE, OR OTHERWISE INCLUDE OTHER SOFTWARE, INCLUDING OTHER CLOUD SG SOFTWARE (COLLECTIVELY, “INCLUDED SOFTWARE”). USE OF INCLUDED SOFTWARE IS SOLELY TO ENABLE THE FUNCTIONALITY (OR PROVIDE LIMITED ADD-ON FUNCTIONALITY) OF THE LICENSED CLOUD SG SOFTWARE AND/OR CLOUD SERVICES. THE INCLUDED SOFTWARE IS NOT LICENSED TO BE USED OR ACCESSED BY ANY OTHER CLOUD SG SOFTWARE AND/OR CLOUD SERVICES OR FOR ANY OTHER PURPOSE.

USE OF CLOUD SG SOFTWARE AND CLOUD SERVICES IS SUBJECT TO THE TERMS AND CONDITIONS OF AN AGREEMENT FOUND IN EITHER A SEPARATELY EXECUTED AGREEMENT, OR, IF THERE IS NO SUCH SEPARATE AGREEMENT, THE CLICKWRAP END USER AGREEMENT WHICH IS DISPLAYED WHEN ACCESSING, DOWNLOADING, OR INSTALLING THE SOFTWARE OR CLOUD SERVICES (AND WHICH IS DUPLICATED IN THE LICENSE FILE) OR IF THERE IS NO SUCH LICENSE AGREEMENT OR CLICKWRAP END USER AGREEMENT, THE LICENSE(S) LOCATED IN THE “LICENSE” FILE(S) OF THE SOFTWARE. USE OF THIS DOCUMENT IS SUBJECT TO THOSE SAME TERMS AND CONDITIONS, AND YOUR USE HEREOF SHALL CONSTITUTE ACCEPTANCE OF AND AN AGREEMENT TO BE BOUND BY THE SAME.

This document is subject to U.S. and international copyright laws and treaties. No part of this document may be reproduced in any form without the written authorization of Cloud Software Group, Inc.

TIBCO, the TIBCO logo, the TIBCO O logo, and EDISIM are either registered trademarks or trademarks of Cloud Software Group, Inc. in the United States and/or other countries.

All other product and company names and marks mentioned in this document are the property of their respective owners and are mentioned for identification purposes only. You acknowledge that all rights to these third party marks are the exclusive property of their respective owners. Please refer to Cloud SG’s Third Party Trademark Notices (<https://www.cloud.com/legal>) for more information.

This document includes fonts that are licensed under the SIL Open Font License, Version 1.1, which is available at: <https://scripts.sil.org/OFL>

Copyright (c) Paul D. Hunt, with Reserved Font Name Source Sans Pro and Source Code Pro.

Cloud SG software may be available on multiple operating systems. However, not all operating system platforms for a specific software version are released at the same time. See the “readme” file for the availability of a specific version of Cloud SG software on a specific operating system platform.

THIS DOCUMENT IS PROVIDED “AS IS” WITHOUT WARRANTY OF ANY KIND, EITHER EXPRESS OR IMPLIED, INCLUDING, BUT NOT LIMITED TO, THE IMPLIED WARRANTIES OF MERCHANTABILITY, FITNESS FOR A PARTICULAR PURPOSE, OR NON-INFRINGEMENT.

THIS DOCUMENT COULD INCLUDE TECHNICAL INACCURACIES OR TYPOGRAPHICAL ERRORS. CHANGES ARE PERIODICALLY ADDED TO THE INFORMATION HEREIN; THESE CHANGES WILL BE INCORPORATED IN NEW EDITIONS OF THIS DOCUMENT. CLOUD SG MAY MAKE IMPROVEMENTS AND/OR CHANGES IN THE PRODUCT(S), THE PROGRAM(S), AND/OR THE SERVICES DESCRIBED IN THIS DOCUMENT AT ANY TIME WITHOUT NOTICE.

THE CONTENTS OF THIS DOCUMENT MAY BE MODIFIED AND/OR QUALIFIED, DIRECTLY OR INDIRECTLY, BY OTHER DOCUMENTATION WHICH ACCOMPANIES THIS SOFTWARE, INCLUDING BUT NOT LIMITED TO ANY RELEASE NOTES AND "README" FILES.

This and other products of Cloud SG may be covered by registered patents. For details, please refer to the Virtual Patent Marking document located at <https://www.cloud.com/legal>.

Copyright © 1991-2025. Cloud Software Group, Inc. All Rights Reserved.