

TIBCO Foresight Products FSUIDs and Application Documents

September 2017

Important Information

SOME TIBCO SOFTWARE EMBEDS OR BUNDLES OTHER TIBCO SOFTWARE. USE OF SUCH EMBEDDED OR BUNDLED TIBCO SOFTWARE IS SOLELY TO ENABLE THE FUNCTIONALITY (OR PROVIDE LIMITED ADD-ON FUNCTIONALITY) OF THE LICENSED TIBCO SOFTWARE. THE EMBEDDED OR BUNDLED SOFTWARE IS NOT LICENSED TO BE USED OR ACCESSED BY ANY OTHER TIBCO SOFTWARE OR FOR ANY OTHER PURPOSE.

USE OF TIBCO SOFTWARE AND THIS DOCUMENT IS SUBJECT TO THE TERMS AND CONDITIONS OF A LICENSE AGREEMENT FOUND IN EITHER A SEPARATELY EXECUTED SOFTWARE LICENSE AGREEMENT, OR, IF THERE IS NO SUCH SEPARATE AGREEMENT, THE CLICKWRAP END USER LICENSE AGREEMENT WHICH IS DISPLAYED DURING DOWNLOAD OR INSTALLATION OF THE SOFTWARE (AND WHICH IS DUPLICATED IN THE LICENSE FILE) OR IF THERE IS NO SUCH SOFTWARE LICENSE AGREEMENT OR CLICKWRAP END USER LICENSE AGREEMENT, THE LICENSE(S) LOCATED IN THE "LICENSE" FILE(S) OF THE SOFTWARE. USE OF THIS DOCUMENT IS SUBJECT TO THOSE TERMS AND CONDITIONS, AND YOUR USE HEREOF SHALL CONSTITUTE ACCEPTANCE OF AND AN AGREEMENT TO BE BOUND BY THE SAME.

This document contains confidential information that is subject to U.S. and international copyright laws and treaties. No part of this document may be reproduced in any form without the written authorization of TIBCO Software Inc.

TIBCO, Two-Second Advantage, TIBCO Foresight Archive and Retrieval System, TIBCO Foresight Instream, TIBCO Foresight Operational Monitor, TIBCO Foresight Studio, TIBCO Foresight Transaction Insight, and TIBCO Foresight Translator are either registered trademarks or trademarks of TIBCO Software Inc. in the United States and/or other countries.

The United States Postal Service holds the copyright in the USPS City State Zip Codes. (c) United States Postal Service 2017.

All other product and company names and marks mentioned in this document are the property of their respective owners and are mentioned for identification purposes only.

THIS SOFTWARE MAY BE AVAILABLE ON MULTIPLE OPERATING SYSTEMS. HOWEVER, NOT ALL OPERATING SYSTEM PLATFORMS FOR A SPECIFIC SOFTWARE VERSION ARE RELEASED AT THE SAME TIME. SEE THE README FILE FOR THE AVAILABILITY OF THIS SOFTWARE VERSION ON A SPECIFIC OPERATING SYSTEM PLATFORM.

THIS DOCUMENT IS PROVIDED "AS IS" WITHOUT WARRANTY OF ANY KIND, EITHER EXPRESS OR IMPLIED, INCLUDING, BUT NOT LIMITED TO, THE IMPLIED WARRANTIES OF MERCHANTABILITY, FITNESS FOR A PARTICULAR PURPOSE, OR NON-INFRINGEMENT.

THIS DOCUMENT COULD INCLUDE TECHNICAL INACCURACIES OR TYPOGRAPHICAL ERRORS. CHANGES ARE PERIODICALLY ADDED TO THE INFORMATION HEREIN; THESE CHANGES WILL BE INCORPORATED IN NEW EDITIONS OF THIS DOCUMENT. TIBCO SOFTWARE INC. MAY MAKE IMPROVEMENTS AND/OR CHANGES IN THE PRODUCT(S) AND/OR THE PROGRAM(S) DESCRIBED IN THIS DOCUMENT AT ANY TIME.

THE CONTENTS OF THIS DOCUMENT MAY BE MODIFIED AND/OR QUALIFIED, DIRECTLY OR INDIRECTLY, BY OTHER DOCUMENTATION WHICH ACCOMPANIES THIS SOFTWARE, INCLUDING BUT NOT LIMITED TO ANY RELEASE NOTES AND "READ ME" FILES.

Copyright © 2010-2017 TIBCO Software Inc. All rights reserved.

TIBCO Software Inc. Confidential Information

Contents

TIBCO Documentation and Support Services4

FSUIDs5

Current uses for IDENT Records 6

Editing FSUIDs in DTL Files with ISFileID.exe8

FSUIDs in Translated Documents10

Ensuring Unique FSUIDs 11

Application Documents12

TIBCO Documentation and Support Services

Documentation for this and other TIBCO products is available on the TIBCO Documentation site. This site is updated more frequently than any documentation that might be included with the product. To ensure that you are accessing the latest available help topics, please visit:

<https://docs.tibco.com>

How to Contact TIBCO Support

For comments or problems with this manual or the software it addresses, contact TIBCO Support:

- For an overview of TIBCO Support, and information about getting started with TIBCO Support, visit this site:

<http://www.tibco.com/services/support>

- If you already have a valid maintenance or support contract, visit this site:

<https://support.tibco.com>

Entry to this site requires a user name and password. If you do not have a user name, you can request one.

How to Join TIBCOmmunity

TIBCOmmunity is an online destination for TIBCO customers, partners, and resident experts. It is a place to share and access the collective experience of the TIBCO community. TIBCOmmunity offers forums, blogs, and access to a variety of resources. To register, go to the following web address:

<https://www.tibcommunity.com>

FSUIDs

A Foresight Unique ID (FSUID) is a unique set of 36 letters, hyphens, and digits, like this:

```
d05c2aa0-3945-11dc-bfd4-2d3b28d0c1b0
```

TIBCO Foresight programs use them to:

1. Identify a file
2. Identify an "application document" within the file (see [Editing FSUIDs in DTL Files with ISFileID.exe](#) on page 8).

Identify the File

To uniquely identify a file, the top of the validation detail file needs a GEN record number 11005 that contains an FSUID, like this:

```
VER 2.0
STRT 010002 104/07/10 16:11:12Analysis requested on file C:\InFiles
\810_5040_X_2.txt, 1347 bytes long
GEN 011005 1 0b6b0c9a9-4281-11df-985f-9b998e625bea
```

To create this GEN record, put **CreateDocumentID=1** in the [Options] section of the \$Dir.ini file in TIBCO Foresight® Instream®'s Bin directory:

```
[Options]
AllowGracePeriod=0
:HipaaCodeTable=0
ShowVersion=1
:GuidelineBestFit=0
:TIRValidation=0
CreateDocumentID=1
```



TIRValidation is for internal TIBCO Foresight use and should be left alone unless you are asked to change it by TIBCO Foresight. If set to 1, it prevents creation of an FSUID in the DTL file even if the guideline requests it.

Identify the Application Document

To uniquely identify an "application document" within a file, you need IDENT records at the start of each application document within the validation detail file.

This IDENT record is assigning a unique number to a particular claim:

```
STRUS 37|2300|0|1|1215
SVALU 37|S009|171|CLM*1*100.00***11:A:1*N*A*N*A*****N*1
IDENT 37|I|4212b4df-4284-11df-ad28-ed02b84a673d|1|
```

The IDENT record format is described in **TIB_instream_n.n_usersguide.pdf**.

To create IDENT records in the DTL file, do both of these:

1. Put IDENT=1 in the [Detail Record Output] section of the validation profile (APF file) used when validating.
2. Validate with a guideline that has CreateFSUID and Identify business rules at the application document level. These are described in **BusinessRules.pdf**. Look in the List of Application Documents section of **ApplicationDocTables.pdf** for a list of guidelines that already have these rules.

Current uses for IDENT Records

Program	FSUIDs Used	How used
TIBCO Foresight® Archive and Retrieval System	GEN IDENT	<p>The Foresight® Archive and Retrieval System needs document-level FSUIDs (IDENT records) in the DTL file. If you are using the JobID for Foresight Archive and Retrieval System, it also needs a file-level FSUID (GEN record 11005), and it is a good idea to have this included as a backup in any case.</p> <p>For Foresight Archive and Retrieval System, unless you use Automator's <code>-n</code> parameter, the workflow will have a jobID for each related set of files. If you use <code>ISfileIDinsert</code>, this jobID will override the detail file's GEN record FSUID in the DTL file.</p> <p>From the portal, a user can request a specific document. This uses the GEN and IDENT FSUIDs to load the document's information into the Foresight Archive and Retrieval System database, where the Foresight Archive and Retrieval System portal displays it.</p> <p>For details, see Workflows, Filesets, and FSUIDs in TIB_fsp_archive_n.n_archives systems.pdf.</p>
TIBCO Foresight® Operational Monitor	GEN	<p>Foresight® Operational Monitor uses the file-level FSUID to match the same data in Foresight Archive and Retrieval System and TIBCO Foresight® Transaction Insight®.</p> <p>When a user requests a file, Foresight Operational Monitor uses the GEN record FSUID to locate it in the repository.</p>

Program	FSUIDs Used	How used
Transaction Insight® Importer	GEN IDENT	<p>The GEN record FSUID is imported into the Transmission table (for use by Foresight Archive and Retrieval System and Foresight Operational Monitor).</p> <p>The IDENT record FSUIDs are imported into the Document table (for use by TIMatcher).</p> <p>IDENT record FSUIDs are needed for Transaction Insight's External Identifiers feature. See TI_Reference_Manual.pdf.</p>
TIMatcher	IDENT	<p>The IDENT record FSUID in the Document table is used when matching one document to another in Transaction Insight.</p> <p>This is not used for the older 997 matching.</p>

Editing FSUIDs in DTL Files with ISFileID.exe

You can delete, read, or update an FSUID in a DTL file's GEN record with `ISFileID.exe`, in Automator's Bin directory.

The GEN record is at the top of the DTL file:

```
VER 2.0
STRT 010002 101/21/10 11:36:22Analysis requested on file ...
GEN 011005 101c338c1e-06ab-11df-ac97-e344f0e6ea94
```

Command Line

ISFileID -r -u ID -d file

Where:

You must include a filename plus either **-r** or **-u**:

-r - Read current ID from the file, if there is one.

-u ID - Update the GEN record with the specified ID. If the GEN record does not exist, it will create one. The ID should be in this format:

```
xxxxxxxx-xxxx-xxxx-xxxx-xxxxxxxxxxxxxxxx
```

-d file - Required. Path and filename to DTL file to be processed.

Example 1

```
ISFileID -u 774a27bc-0475-11df-a546-b97c6b1fa052 c:\filein\Myfile_Results.dtl
```

If a FSUID GEN record exists in the file, its FSUID is changed to the value specified on the command line. If no FSUID GEN record exists, it is created:

```
VER 2.0
STRT 010002 104/07/05 16:52:07Analysis requested on
GEN 011005 1 0774a27bc-0475-11df-a546-b97c6b1fa052
GEN 015010 1 Omessage file loaded : C:\Program File
GEN 015010 1 Omessage file loaded : C:\Program File
```

Example 2

```
ISFileID -r c:\temp\in\Myfile_Results.dtl
```

If `Myfile_Results.dtl` has an FSUID GEN record, this command returns its FSUID value. If the file contained the GEN record shown in Example 1 above, it would return:

```
774a27bc-0475-11df-a546-b97c6b1fa052
```

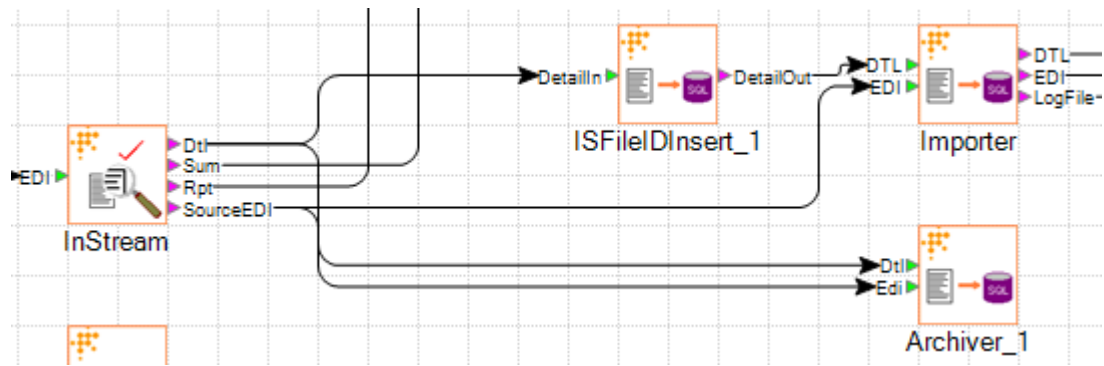
Example 3

```
ISFileID -d c:\temp\in\Myfile_Results.dtl
```

This deletes the FSUID GEN record, if it exists.

Example 4

This TIBCO Foresight® Studio® workflow uses the `ISFileIDInsert` component to replace the file-level (GEN record) FSUID with the workflow's jobID before importing it into Transaction Insight:

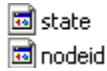


FSUIDs in Translated Documents

TIBCO Foresight® Translator can insert an FSUID into a data element with its FSID reserved variable. Please search for FSID in **TIB_translator_11.11_usersguide.pdf**.

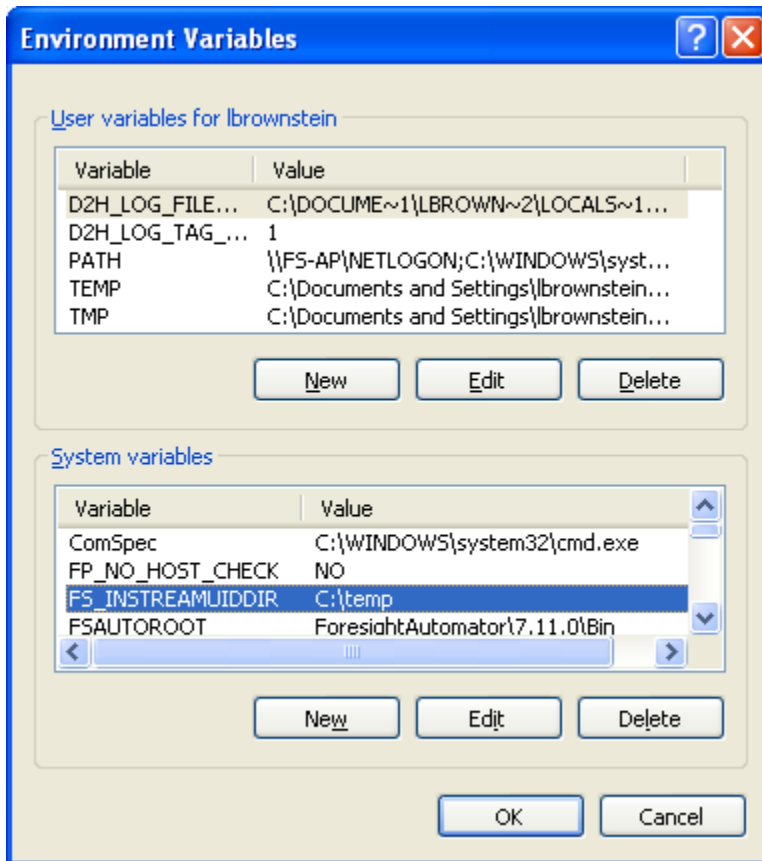
Ensuring Unique FSUIDs

To control the creation of FSUIDs, Instream® writes these two files in the current directory:



If you have multiple instances of Instream running on the same machine, they should all use the same **state** and **nodeid** files. This ensures that FSUIDs will be unique.

To do this, set up a FS_INSTREAMUIDDIR environment variable that points to a directory for these files. Be sure that the directory exists and that all Instreams can write to it.



If you are using an Instream API, we suggest that you use FS_INSTREAMUIDDIR to point to a directory where you have write permission.

Application Documents

Throughout TIBCO Foresight products, you will see references to "application documents" or "the document level." These are the claims, coverage document, and other business documents within a transaction.

This Transaction Insight Transmissions search shows a transaction set with 16 documents.

Date	Transmission ID	File Name	Direction	Bytes	# Docs	# Good	# Bad
▶ 7/1/2015 2:01:38 PM	566024	5010834Clean.edi	Inbound	3657	10	0	10
▶ 7/1/2015 9:56:01 AM	566021	5010834Clean.edi	Inbound	3657	10	0	10
▶ 7/1/2015 9:49:24 AM	566019	5010834Clean.edi	Inbound	3657	10	0	10
▶ 5/11/2015 2:32:26 PM	565895	837I+TI950.edi	Inbound	38110	16	0	16
▼ 5/11/2015 1:08:52 PM	565894	837I+TI950.edi	Inbound	38110	16	0	16

When you open the transaction set, each line in the **DOC #** column represents one document:

▼ 5/11/2015 1:08:52 PM	565894	837I+TI950.edi	Inbound	38110	16		
Document ID	Doc #	Amount	Assigned	Document Date	Number of Errors	Original File Date	Orig
866705	1	111.10		7/23/2011 5:55:00 PM	11		
866706	2	222.20		7/23/2011 5:55:00 PM	7		
866707	3	333.33		7/23/2011 5:55:00 PM	1		
866708	4	444.44		7/23/2011 5:55:00 PM	1		
866709	5	555.50		7/23/2011 5:55:00 PM	6		
866710	6	666.60		7/23/2011 5:55:00 PM	9		

Looking at the table in **ApplicationDocTables.pdf**, we see that an application document for an 837 transaction is the 2300 loop (the claim). The transaction therefore contains 16 claims.