

TIBCO Foresight® Transaction Insight®

Synchronizing TIBCO Foresight® Instream®
and Transaction Insight®

*Software Release 5.2
September 2017*

Important Information

SOME TIBCO SOFTWARE EMBEDS OR BUNDLES OTHER TIBCO SOFTWARE. USE OF SUCH EMBEDDED OR BUNDLED TIBCO SOFTWARE IS SOLELY TO ENABLE THE FUNCTIONALITY (OR PROVIDE LIMITED ADD-ON FUNCTIONALITY) OF THE LICENSED TIBCO SOFTWARE. THE EMBEDDED OR BUNDLED SOFTWARE IS NOT LICENSED TO BE USED OR ACCESSED BY ANY OTHER TIBCO SOFTWARE OR FOR ANY OTHER PURPOSE.

USE OF TIBCO SOFTWARE AND THIS DOCUMENT IS SUBJECT TO THE TERMS AND CONDITIONS OF A LICENSE AGREEMENT FOUND IN EITHER A SEPARATELY EXECUTED SOFTWARE LICENSE AGREEMENT, OR, IF THERE IS NO SUCH SEPARATE AGREEMENT, THE CLICKWRAP END USER LICENSE AGREEMENT WHICH IS DISPLAYED DURING DOWNLOAD OR INSTALLATION OF THE SOFTWARE (AND WHICH IS DUPLICATED IN THE LICENSE FILE) OR IF THERE IS NO SUCH SOFTWARE LICENSE AGREEMENT OR CLICKWRAP END USER LICENSE AGREEMENT, THE LICENSE(S) LOCATED IN THE "LICENSE" FILE(S) OF THE SOFTWARE. USE OF THIS DOCUMENT IS SUBJECT TO THOSE TERMS AND CONDITIONS, AND YOUR USE HEREOF SHALL CONSTITUTE ACCEPTANCE OF AND AN AGREEMENT TO BE BOUND BY THE SAME.

This document contains confidential information that is subject to U.S. and international copyright laws and treaties. No part of this document may be reproduced in any form without the written authorization of TIBCO Software Inc.

TIBCO, Two-Second Advantage, TIBCO Foresight Instream, TIBCO Foresight Studio, and TIBCO Foresight Transaction Insight are either registered trademarks or trademarks of TIBCO Software Inc. in the United States and/or other countries.

EJB, Java EE, J2EE, and all Java-based trademarks and logos are trademarks or registered trademarks of Sun Microsystems, Inc. in the U.S. and other countries.

The United States Postal Service holds the copyright in the USPS City State Zip Codes. (c) United States Postal Service 2017.

All other product and company names and marks mentioned in this document are the property of their respective owners and are mentioned for identification purposes only.

THIS SOFTWARE MAY BE AVAILABLE ON MULTIPLE OPERATING SYSTEMS. HOWEVER, NOT ALL OPERATING SYSTEM PLATFORMS FOR A SPECIFIC SOFTWARE VERSION ARE RELEASED AT THE SAME TIME. SEE THE README FILE FOR THE AVAILABILITY OF THIS SOFTWARE VERSION ON A SPECIFIC OPERATING SYSTEM PLATFORM.

THIS DOCUMENT IS PROVIDED "AS IS" WITHOUT WARRANTY OF ANY KIND, EITHER EXPRESS OR IMPLIED, INCLUDING, BUT NOT LIMITED TO, THE IMPLIED WARRANTIES OF MERCHANTABILITY, FITNESS FOR A PARTICULAR PURPOSE, OR NON-INFRINGEMENT.

THIS DOCUMENT COULD INCLUDE TECHNICAL INACCURACIES OR TYPOGRAPHICAL ERRORS. CHANGES ARE PERIODICALLY ADDED TO THE INFORMATION HEREIN; THESE CHANGES WILL BE INCORPORATED IN NEW EDITIONS OF THIS DOCUMENT. TIBCO SOFTWARE INC. MAY MAKE IMPROVEMENTS AND/OR CHANGES IN THE PRODUCT(S) AND/OR THE PROGRAM(S) DESCRIBED IN THIS DOCUMENT AT ANY TIME.

THE CONTENTS OF THIS DOCUMENT MAY BE MODIFIED AND/OR QUALIFIED, DIRECTLY OR INDIRECTLY, BY OTHER DOCUMENTATION WHICH ACCOMPANIES THIS SOFTWARE, INCLUDING BUT NOT LIMITED TO ANY RELEASE NOTES AND "READ ME" FILES.

Copyright © 2010-2017 TIBCO Software Inc. ALL RIGHTS RESERVED.

TIBCO Software Inc. Confidential Information

General Contact Information

TIBCO Software Inc.
3303 Hillview Avenue
Palo Alto, CA 94304 USA
Tel: +1 650 846 1000
Fax: +1 650 846 1005

Technical Support

E-mail: support@tibco.com
Web: <https://support.tibco.com>

(Note: Entry to this site requires a username and password. If you do not have one, you can request one. You must have a valid maintenance or support contract to use this site.)

Contents

- Document Purpose 2
- Revalidation Instream Overview 2
- Synchronizing Instream Versions and Locations with Transaction Insight 2
 - Instream’s \$dir.ini or fsdir.ini2
 - Web.config3
 - Transaction Insight’s Database.....3
 - Importer’s Error File4
 - Automator’s Workflows5

Document Purpose

This document is for TIBCO Foresight® Transaction Insight® customers who are updating TIBCO Foresight® Instream®.

This document explains how to upgrade an existing Transaction Insight® environment to work with a particular version of Instream®. It does not explain the installation of Instream or Transaction Insight, only how to allow the two to work together.

Use these directions when you change versions of Instream or when you install an Instream guideline update.

Please pay close attention to the script names. They may have changed from previous versions.

Revalidation Instream Overview

In order for revalidation to work in the Transaction Insight forms, you will need to have Instream installed. This is used as follows:

- Transaction Insight uses this copy of Instream to revalidate the corrected EDI data whenever you click **Validate** on a form.
- The default Transaction Insight installation sets up an Automator workflow which also uses this copy of Instream for the initial validation and import of statistics into Transaction Insight.

If your Transaction Insight environment requires Instream to run on another machine, or possibly even another operating system (UNIX, for example), then you will need to make adjustments as described in this document.

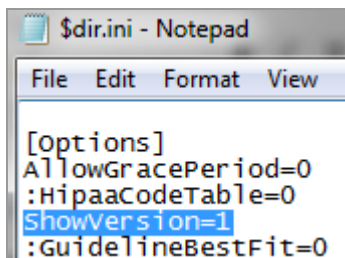
Synchronizing Instream Versions and Locations with Transaction Insight

In the instructions below, adapt the instructions to account for your local configuration. Your paths and environment names will vary.

These instructions assume Instream has already been installed on the Transaction Insight server machine.

Instream's \$dir.ini or fsdir.ini

Turn on ShowVersion in the [Options] section of \$dir.ini (Windows) or fsdir.ini (UNIX) in Instream's Bin directory:

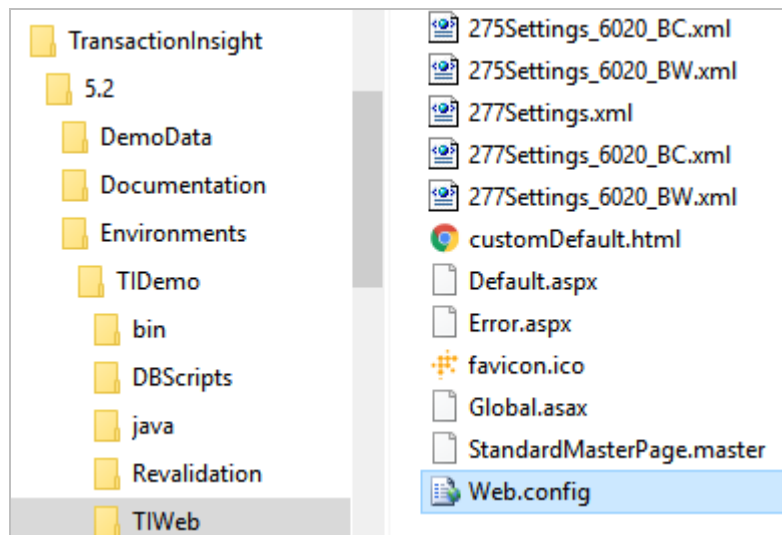


This tells Importer which version of Instream created the results file. Importer can then properly translate the Instream EDI error messages into the Non-Technical, UB92, HCFA and Dental versions shown on the portal.

Web.config

Edit Web.config in the Transaction Insight environment's TIWeb directory.

Example:



Modify the InstreamDirectory appSetting to point to the Instream's Bin directory. Example:

```
<add key="InstreamDirectory" value="C:\tibco\instream\8.6\Bin\" />
```

If you have more than one environment, edit the Web.config in each one.

Transaction Insight's Database

Each time you update Instream's TIBCO Foresight-supplied guidelines, you need to update your Transaction Insight database accordingly. That way, error message changes from the updated guidelines will be used in Transaction Insight as well.

You will need to do this if:

- You install a new version of Instream (which always includes the latest guideline updates)
- You install a guideline-only update or patch that includes guidelines.

Use one of these scripts to update the error messages in your Transaction Insight database to match those in your Instream guidelines:

TI_ErrorUpdate_For_Instream_version_MSSQL.sql

TI_ErrorUpdate_For_Instream_version_ORACLE.sql

The *version* in the script name should match the version of guidelines you are using in the Instream that feeds Transaction Insight. It may not match the version of Instream itself.

Examples:

Instream version	Latest guideline update	Script to run
8.6.0	None	TI_ErrorUpdate_For_Instream_8.6.0.0_MSSQL.sql or TI_ErrorUpdate_For_Instream_8.6.0.0_ORACLE.sql
8.6.0	8.6.0.1	TI_ErrorUpdate_For_Instream_8.6.0.1_MSSQL.sql or TI_ErrorUpdate_For_Instream_8.6.0.1_ORACLE.sql

For Instream 7.16.0 and later, these scripts are installed in Instream's **Scripts\TI** directory. For earlier versions, please contact TIBCO Foresight Support.

They are also installed if you do a guideline-only update.

Run the appropriate script against the Transaction Insight database. You may need to have your DBA do this step for you.

Importer's Error File

Copy ErrMsgTrans_*version*.txt from Instream's bin directory into the same directory as Importer.exe. The default location for Importer.exe is:

```
C:\Foresight\TransactionInsight\version\Environments\environmentName\bin
```

Rename it to include the three-part Instream version, like these examples:

```
ErrMsgTrans_8.6.0.txt  
ErrMsgTrans_8.6.0.txt
```

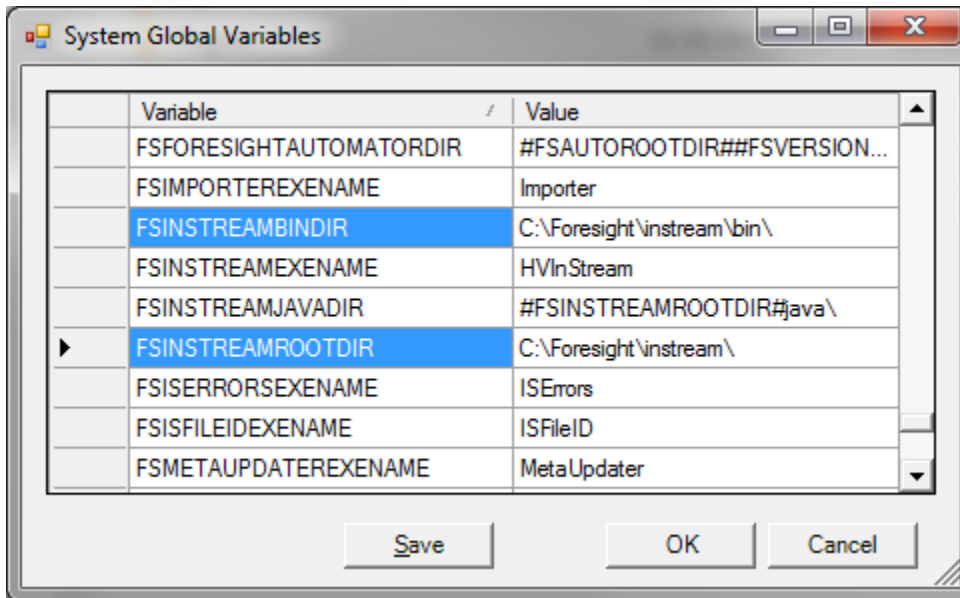
If you would rather place the ErrMsgTrans file into a different directory, edit Importer.ini and add an entry for the new Instream version in the [Instream] section (near the end of the file). It should resemble this, but use the appropriate version and path:

```
8.6.0=C:\ErrorMsgFiles\ErrMsgTrans_8.6.0.txt
```

You should now be ready to import or reimport using the new version of Instream.

Automator's Workflows

If you are using workflows for Instream's primary validation, open TIBCO Foresight® Studio, choose **File | Edit Globals** and check these settings:



Please see **ForesightStudio.pdf**, **MovingWorkflows.pdf** and **Variables_for_Workflows.pdf** for information on updating workflows.