

TIBCO Cloud MDM Sample Data Models

*Software Release 2.0.1
May 2017*

Important Information

SOME TIBCO SOFTWARE EMBEDS OR BUNDLES OTHER TIBCO SOFTWARE. USE OF SUCH EMBEDDED OR BUNDLED TIBCO SOFTWARE IS SOLELY TO ENABLE THE FUNCTIONALITY (OR PROVIDE LIMITED ADD-ON FUNCTIONALITY) OF THE LICENSED TIBCO SOFTWARE. THE EMBEDDED OR BUNDLED SOFTWARE IS NOT LICENSED TO BE USED OR ACCESSED BY ANY OTHER TIBCO SOFTWARE OR FOR ANY OTHER PURPOSE.

USE OF TIBCO SOFTWARE AND THIS DOCUMENT IS SUBJECT TO THE TERMS AND CONDITIONS OF A LICENSE AGREEMENT FOUND IN EITHER A SEPARATELY EXECUTED SOFTWARE LICENSE AGREEMENT, OR, IF THERE IS NO SUCH SEPARATE AGREEMENT, THE CLICKWRAP END USER LICENSE AGREEMENT WHICH IS DISPLAYED DURING DOWNLOAD OR INSTALLATION OF THE SOFTWARE (AND WHICH IS DUPLICATED IN THE LICENSE FILE) OR IF THERE IS NO SUCH SOFTWARE LICENSE AGREEMENT OR CLICKWRAP END USER LICENSE AGREEMENT, THE LICENSE(S) LOCATED IN THE "LICENSE" FILE(S) OF THE SOFTWARE. USE OF THIS DOCUMENT IS SUBJECT TO THOSE TERMS AND CONDITIONS, AND YOUR USE HEREOF SHALL CONSTITUTE ACCEPTANCE OF AND AN AGREEMENT TO BE BOUND BY THE SAME.

This document contains confidential information that is subject to U.S. and international copyright laws and treaties. No part of this document may be reproduced in any form without the written authorization of TIBCO Software Inc.

TIBCO and Two-Second Advantage are either registered trademarks or trademarks of TIBCO Software Inc. in the United States and/or other countries.

Enterprise Java Beans (EJB), Java Platform Enterprise Edition (Java EE), Java 2 Platform Enterprise Edition (J2EE), and all Java-based trademarks and logos are trademarks or registered trademarks of Oracle Corporation in the U.S. and other countries.

All other product and company names and marks mentioned in this document are the property of their respective owners and are mentioned for identification purposes only.

THIS SOFTWARE MAY BE AVAILABLE ON MULTIPLE OPERATING SYSTEMS. HOWEVER, NOT ALL OPERATING SYSTEM PLATFORMS FOR A SPECIFIC SOFTWARE VERSION ARE RELEASED AT THE SAME TIME. SEE THE README FILE FOR THE AVAILABILITY OF THIS SOFTWARE VERSION ON A SPECIFIC OPERATING SYSTEM PLATFORM.

THIS DOCUMENT IS PROVIDED "AS IS" WITHOUT WARRANTY OF ANY KIND, EITHER EXPRESS OR IMPLIED, INCLUDING, BUT NOT LIMITED TO, THE IMPLIED WARRANTIES OF MERCHANTABILITY, FITNESS FOR A PARTICULAR PURPOSE, OR NON-INFRINGEMENT.

THIS DOCUMENT COULD INCLUDE TECHNICAL INACCURACIES OR TYPOGRAPHICAL ERRORS. CHANGES ARE PERIODICALLY ADDED TO THE INFORMATION HEREIN; THESE CHANGES WILL BE INCORPORATED IN NEW EDITIONS OF THIS DOCUMENT. TIBCO SOFTWARE INC. MAY MAKE IMPROVEMENTS AND/OR CHANGES IN THE PRODUCT(S) AND/OR THE PROGRAM(S) DESCRIBED IN THIS DOCUMENT AT ANY TIME.

THE CONTENTS OF THIS DOCUMENT MAY BE MODIFIED AND/OR QUALIFIED, DIRECTLY OR INDIRECTLY, BY OTHER DOCUMENTATION WHICH ACCOMPANIES THIS SOFTWARE, INCLUDING BUT NOT LIMITED TO ANY RELEASE NOTES AND "READ ME" FILES.

Copyright © 2017 TIBCO Software Inc. ALL RIGHTS RESERVED.

TIBCO Software Inc. Confidential Information

Contents

TIBCO Documentation and Support Services	4
Party Model	5
Repositories	5
Repositories in Party Model	5
Datasource	6
Data Sources and Input Maps in Party Model	6
Synchronization Format	8
Synchronization Format and Output Maps in Party Model	8
Rulebase	8
Rulebases in Party Model	8
Classification Schemes	10
Classification Schemes in Party Model	10
Perspective	10
Data Files	10
Data Files in Party Model	10
Insurance Model	11
Repositories in Insurance Model	11
Data Sources and Input Maps in Insurance Model	12
Rulebases in Insurance Model	13
UI Pages in Insurance Model	15
Perspectives in Insurance Model	16

TIBCO Documentation and Support Services

Documentation for this and other TIBCO products is available on the TIBCO Documentation site. This site is updated more frequently than any documentation that might be included with the product. To ensure that you are accessing the latest available help topics, visit:

<https://docs.tibco.com>

Product-Specific Documentation

The following documents for this product can be found on the TIBCO Documentation site:

- *TIBCO Cloud MDM Provisioning and Configuration Guide: Read this manual to learn the TIBCO Cloud MDM Console features. This manual guides you to use the console and its functionality as well as all the screens.*
- *TIBCO Cloud MDM Sample Data Models: Read this manual to know the commonly used data models. Using these models, you can perform various functions of TIBCO Cloud MDM .*

How to Contact TIBCO Support

For comments or problems with this manual or the software it addresses, contact TIBCO Support:

- For an overview of TIBCO Support, and information about getting started with TIBCO Support, visit this site:

<http://www.tibco.com/services/support>

- If you already have a valid maintenance or support contract, visit this site:

<https://support.tibco.com>

Entry to this site requires a user name and password. If you do not have a user name, you can request one.

How to Join TIBCOCommunity

TIBCOCommunity is an online destination for TIBCO customers, partners, and resident experts. It is a place to share and access the collective experience of the TIBCO community. TIBCOCommunity offers forums, blogs, and access to a variety of resources. To register, go to the following web address:

<https://www.tibcommunity.com>

How to Join TIBCO Community

TIBCO Community is an online destination for TIBCO customers, partners, and resident experts. It is a place to share and access the collective experience of the TIBCO community. TIBCO Community offers forums, blogs, and access to a variety of resources. To register, go to the following web address:

<https://community.tibco.com>

Party Model

The Party model is a sample B2B metadata which is the commonly used data model for customer details. The Party model comprises the following items:

- Repositories Models
- Data sources
- Inputs Maps
- Synchronization Formats
- Output Maps
- Rulebase Models

Repositories

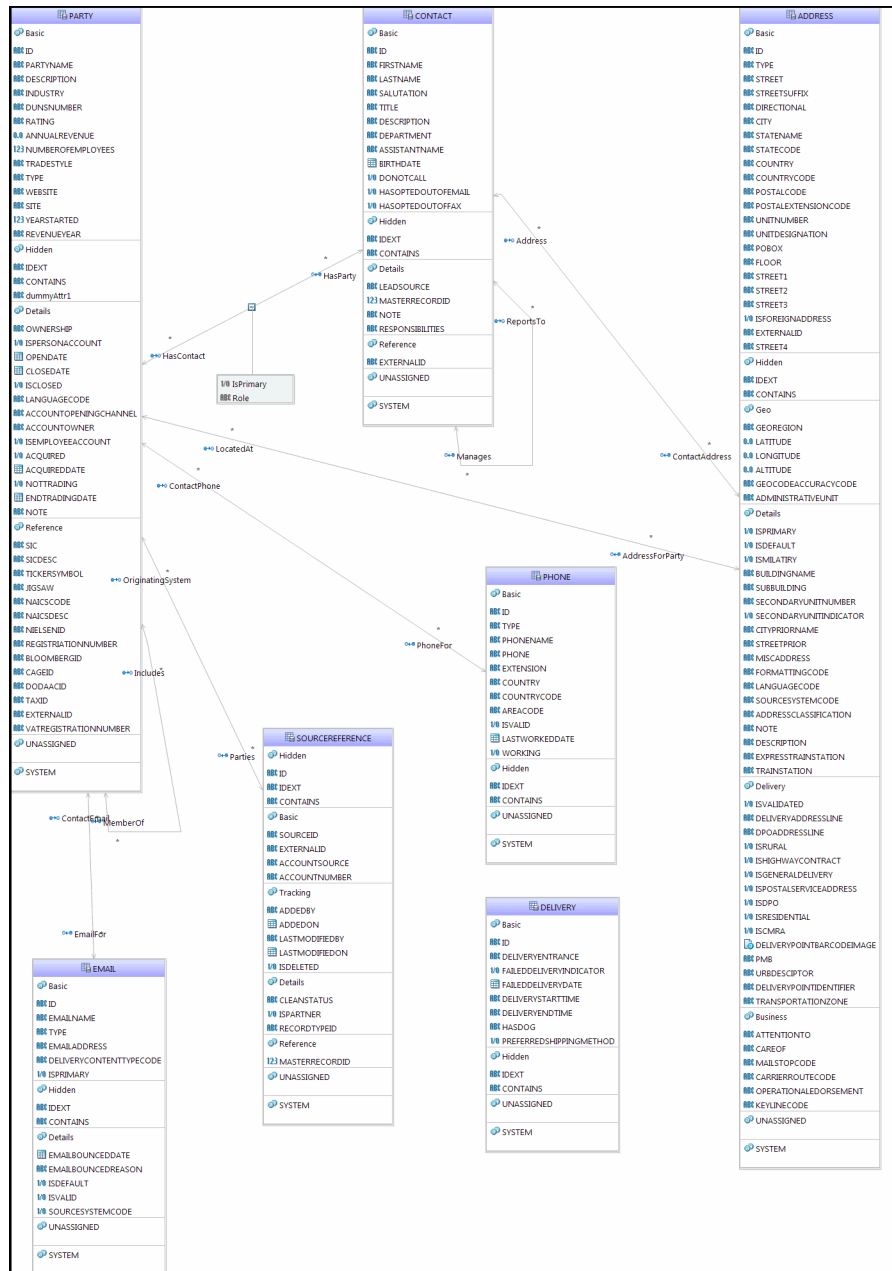
A repository defines the structure of your master data. It is often referred to as metadata. The structure of the repository is defined by your company and is very specific to your business requirements.

You can manage records, establish relationships between records, search data, and integrate data with other enterprise systems by using a repository.

Repositories in Party Model

The Party model metadata comprises the following repositories:

- Address
- Contact
- Delivery
- Email
- Party
- Phone
- Source Reference
- Tag
- Tax Account
- Person
- Household
- Asset
- Bank
- Bank Account
- Bank Branch
- Account



Datasource

Import is the process of acquiring master data from external sources into TIBCO MDM. The imported data may need to be transformed and mapped to one or more repositories. You can configure the Import process according to the requirements of your company. To import records, create a data source and an input map.

Data source typically maps to a file or the database table. Using the data sources, you can import data into repositories, identify records to create subsets, and transform data.

Data Sources and Input Maps in Party Model

The Party model comprises the following data sources:

- Account Source: datasource to enter the account source details
- Contact: datasource to enter the contact details

- Country: datasource to enter the country details
- Bank Type: datasource to enter the bank type
- Industry Types: datasource to enter the industry type details
- Language Codes: datasource to enter the language codes
- Occupation: datasource to enter the occupation details
- Ratings: datasource to enter the rating details
- Role: datasource to enter the role details
- SalesforceAccount: datasource showing the salesforce account mapped with account table
- State: datasource to enter the state code
- Tax Type: datasource to enter the tax type

In addition, the Party model comprises the following input maps:

- Address InputMap1
- Address InputMap2
- LocatedAt_InputMap1
- LocatedAt_InputMap2
- HasContact_InputMap1
- Contact_Email_InputMap1
- Party InputMap
- Party InputMap2
- ContactPhone_InputMap1
- ContactPhone_InputMap2
- ContactPhone_InputMap3
- ContactPhone_InputMap4
- ContactPhone_InputMap5
- ContactPhone_InputMap6
- ContactPhone_InputMap7
- OriginatingSystem_InputMap1

Data Source Definition

Data Source Configuration

Name	ACCOUNTSOURCE	Description	ACCOUNTSOURCE
Delimiter Character	Comma	Date Format	DD-MM-YY
Text Qualifier Character	Double quote	Timestamp Format	YYYY-MM-DD HH:mm:ss.S
Start Import at Row Number	2	Use Column Names	Yes
Data File	C:\Users\upadmash\workspace115\cloud\Data Files\ACCOUNTSOURCE.txt	Format	Delimited

Attributes

Position	Name	Description	Type	Length
1	AccountSource	AccountSource	String	0

Data Source Preview

- AccountSource
- Data.com
- Advertisement
- Trade Show

Synchronization Format

You can configure exporting records according to the requirements of your company. To export records, define the synchronization format, output map, the synchronization profiles.

Synchronization Format and Output Maps in Party Model

The Party model comprises the following synchronization format:

- Salesforce account.

In addition, the Party model also consists of the following output maps:

- ContactEmail_OutputMap
- ContactPhone_OutputMap
- HasContact_OutputMap
- LocatedAt_OutputMap
- OriginatingSystem_OutputMap
- Party_OutputMap

Position	Name	DisplayName	Description	DataType	Length	ValuesList	MaxNumberOf...	SortOrder	ColumnName	Required	Searchable	DisplayInRecon...
1	ID		Unique ID (18 ...	String	18	false	-1	None		false	false	false
2	ISDELETED		IsDeleted	String	5	false	-1	None		false	false	false
3	MASTERRECO...		Master Record...	String	18	false	-1	None		false	false	false
4	PARTYNAME		Name of the a...	String	255	false	-1	None		false	false	false
5	TYPE		Type	String	20	false	-1	None		false	false	false

Rulebase

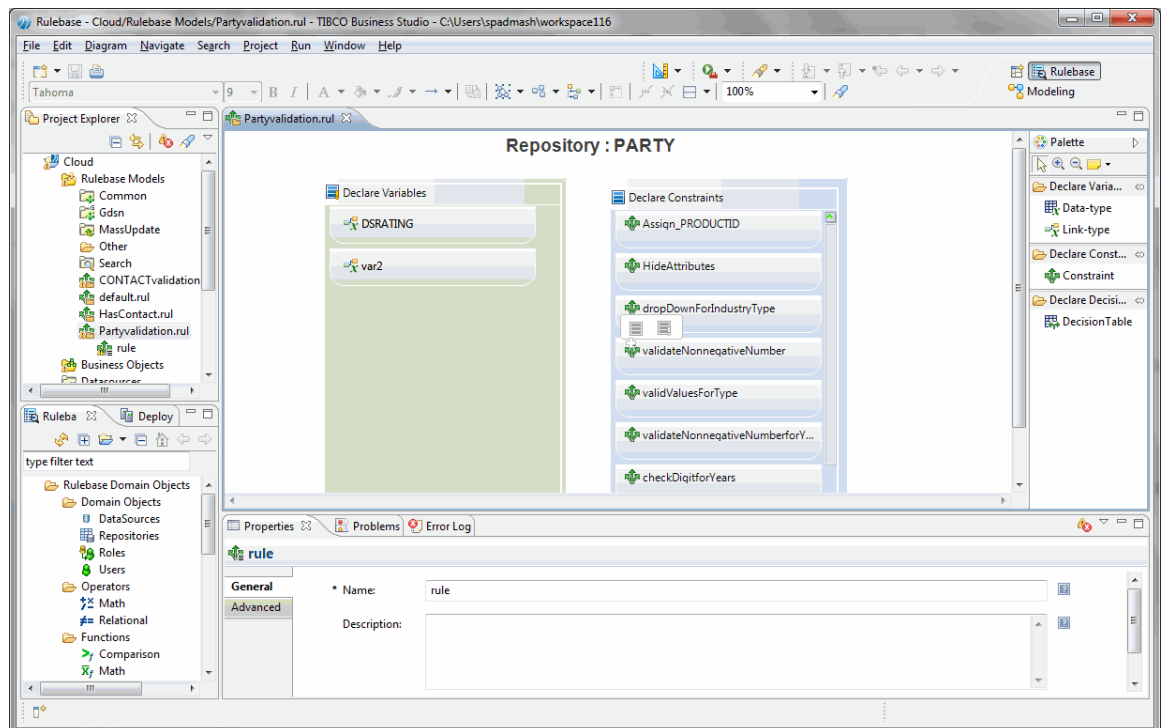
The metadata rules are defined in a rulebase file. Rules are executed in the sequence in which they are defined in the rulebase file. The rulebase consists of variables and constraints. The rulebase constraint contains a condition and an action. The condition describes when the rule needs to be applied. The action describes what the rule actually does and controls what attributes the rule is applicable to.

Rulebases in Party Model

The Party model comprises the following rulebases:

- b2b_ACCOUNT_catalogvalidation.rul
- b2b_ADDRESS_catalogvalidation.rul
- b2b_ADDRESS_searchcontrolrules.rul
- b2b_ASSET_catalogvalidation.rul

- b2b_BANK_catalogvalidation.rul
- b2b_BANKACCOUNT_catalogvalidation.rul
- b2b_BANKBRANCH_catalogvalidation.rul
- b2b_CONTACT_catalogvalidation.rul
- b2b_CONTACT_searchcontrolrules.rul
- b2b_DELIVERY_catalogvalidation.rul
- b2b_EMAIL_catalogvalidation.rul
- b2b_EMAIL_searchcontrolrules.rul
- b2b_HOUSEHOLD_catalogvalidation.rul
- b2b_PARTY_catalogvalidation.rul
- b2b_PARTY_searchcontrolrules.rul
- b2b_PERSON_catalogvalidation.rul
- b2b_PHONE_catalogvalidation.rul
- b2b_PHONE_searchcontrolrules.rul
- b2b_REL_HASCONTACT_catalogvalidation.rul
- b2b_SFIdentityRulebase.rul
- b2b_SFImportRulebase.rul
- b2b_SOURCEREERENCE_catalogvalidation.rul
- b2b_TAG_catalogvalidation.rul
- b2b_TAXACCOUNT_catalogvalidation.rul



Classification Schemes

Using Classification schemes, you can organize records based on their attributes. For example, vendor records can be organized by a country-state-city hierarchy.

Classification Schemes in Party Model

The Party model comprises of the following classification schemes:

- ADDRESSTYPE
- BankType
- BranchTypes
- EMAILTYPES
- ACCOUNTTYPES
- INDUSTRY
- RATING
- PHONETYPE
- TypeofTaxes

Perspective

Using perspective, you can view a subset of a relationship, repository attributes, and relationship attributes of Party Model. The Party model comprises the PartyDetails perspective.

Data Files

Data files are used in data source to import records in repositories. In Party Model, different data files are available.

Data Files in Party Model

The Party model comprises of the following data files, which are used full for data sources:

- Account.csv
- AccountSource.txt
- BankTypes.csv
- Contact.csv
- CountryCode.csv
- IndustryTypes.txt
- LanguageCodes.csv
- Occupation.csv
- Ratings.txt
- Roles.txt
- State.csv
- TaxTypes.csv

Insurance Model

The Insurance model is a sample data model for an insurance company. The Insurance model comprises the following items:

- Repositories models
- Data sources
- Rulebase models
- UI Builder

The Insurance metadata model does not contain the UI Builder pages. Download the Insurance studio project from TIBCO Access Point (TAP) and deploy the WSDL services and custom UI pages.

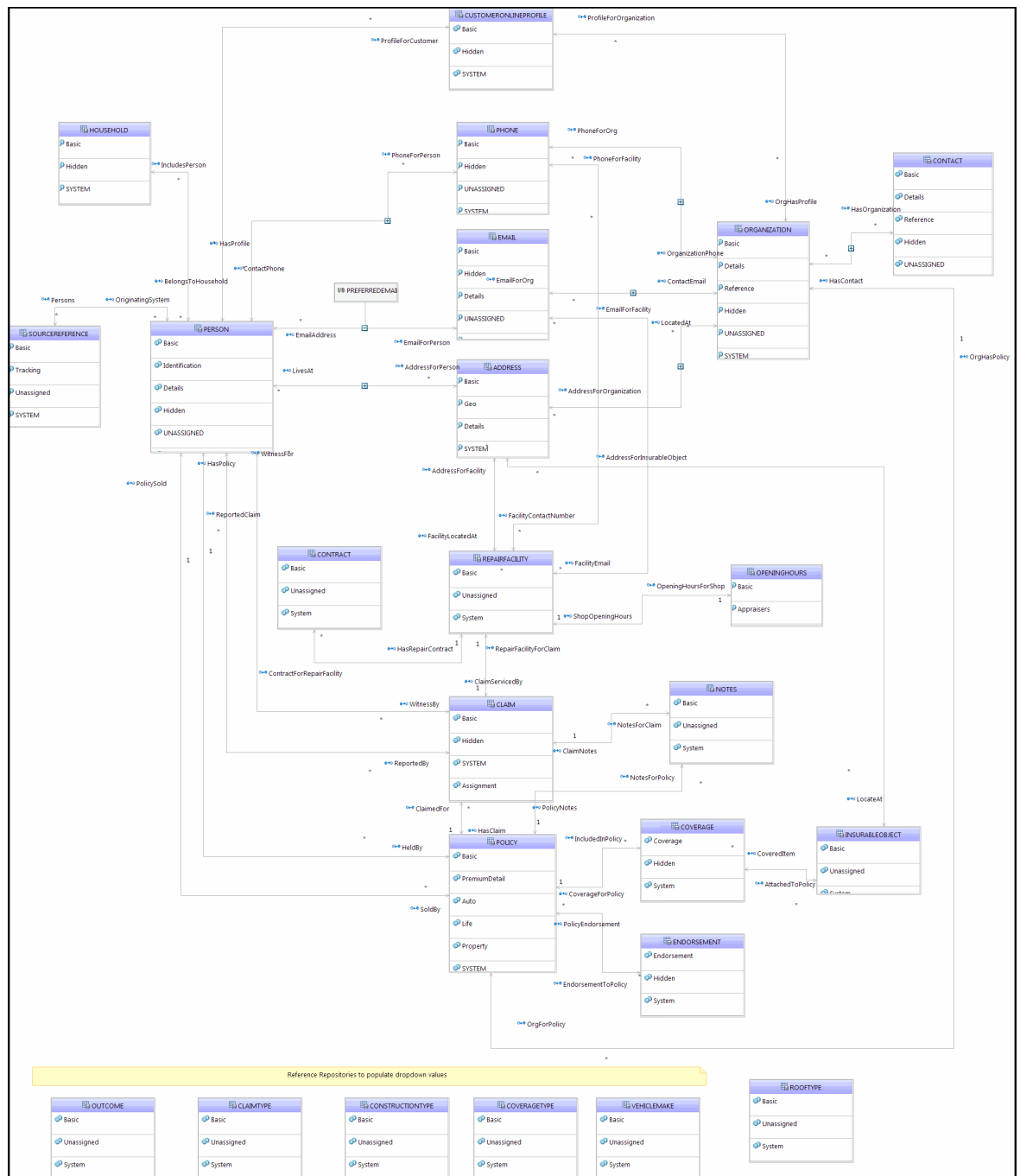
Repositories in Insurance Model

The Insurance model metadata comprises the following repositories:

Address	Claim	ClaimType
ConstructionType	Contact	Contract
Coverage	CoverageType	CustomerOnlineProfile
Email	Endorsement	Household
InsurableObject	Notes	OpeningHours
Organization	Outcome	Person
Phone	Policy	RepairFacility
RoofType	SourceReference	VEHICLEMAKE

The Prospects repository module comprises the following repositories:

- ACCESSHISTORY
- CHANGEHISTORY
- PROSPECTS
- SECURITYHINTS



Data Sources and Input Maps in Insurance Model

The Insurance Model comprises the following data sources:

AccountSource: datasource to enter the account source details	ClaimType: datasource to enter the claim type details
ConstructionType: datasource to enter the construction type details	Country: datasource to enter the country details
CoverageType: datasource to enter the coverage type details	IndustryType: datasource to enter the industry type details

LanguageCodes: datasource to enter the list of language codes	Occupation: datasource to enter the state code
PolicyType: datasource to enter the policy type details	Rating: datasource to enter the rating details
RoofType: datasource to enter the roof type details	State: datasource to enter the state details
VehicleMake: datasource to enter the vehicle make details	YearList: datasource to enter the year list details
RoleValues: datasource to enter the data values	

In addition, the Insurance model comprises the following input maps:

- LoadClaimType: Input map to load Claim Type data
- LoadConstructionType: Input map to load Data for Construction Type
- LoadCoverageType: Input map to load coverage type
- LoadRoofType: Input Map to load Roof Type for references
- LoadVehiclemake: Input Map to load Vehicle make for references

Data Source Definition

Data Source Configuration

Name: ClaimType
 Delimiter Character: Comma
 Text Qualifier Character: Double quote
 Start Import at Row Number: 2
 Data File: D:\Workspace_4.0.1_V48\Insurance\Data Files\Claim

Description: Valid Values for Claim Type attribute
 Date Format: DD-MM-YY
 Timestamp Format: YYYY-MM-DD HH:mm:ss.S
 Use Column Names: Yes
 Format: Delimited

Attributes

Position	Name	Description	Type
1	PolicyType	InsuranceType	String
2	Claim	Claim	String

Data Source Preview

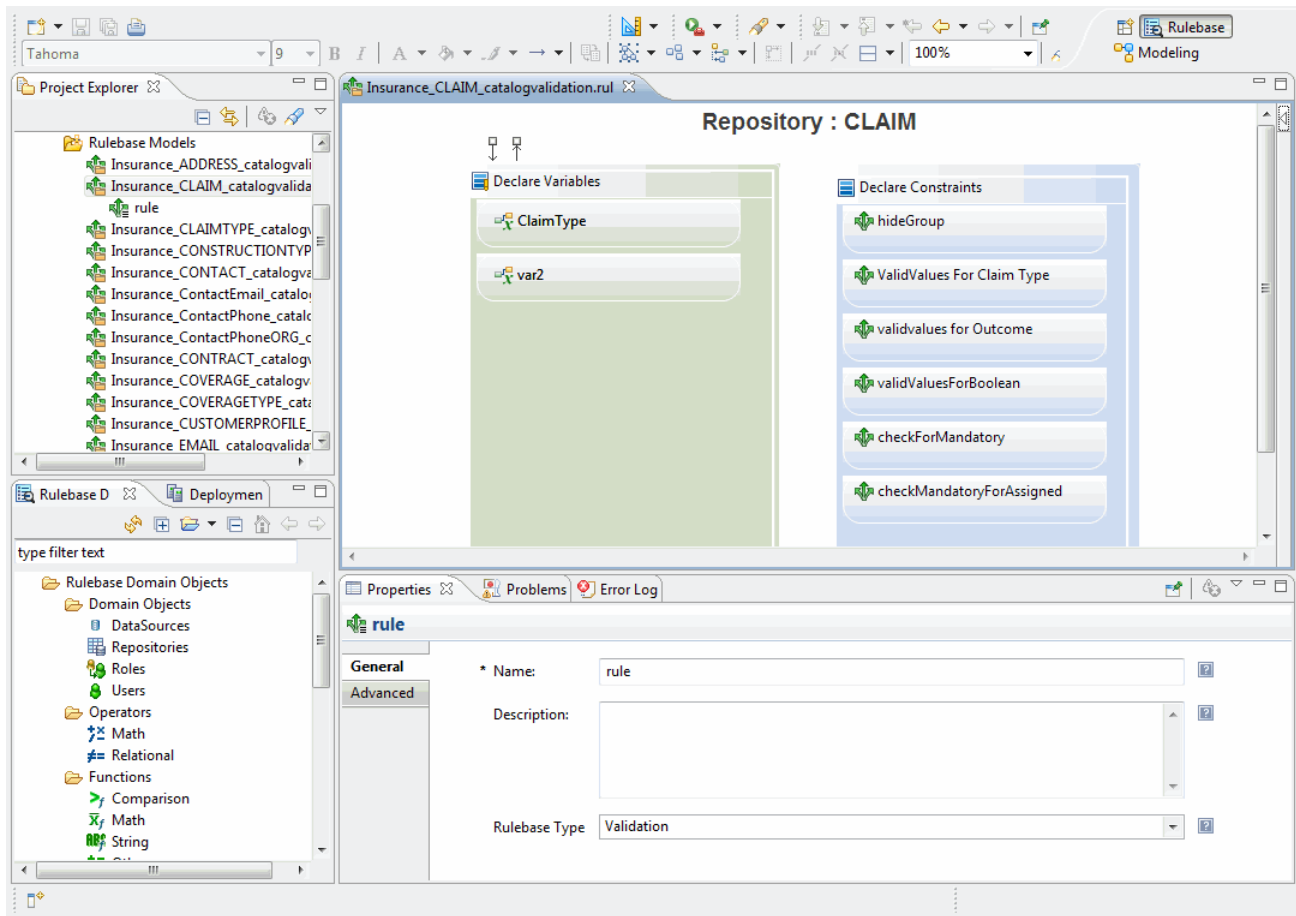
InsuranceType	Claim
Auto	Loss of value to vehicle
Auto	Personal injury
Auto	Injury by uninsured or underinsured defendant
Auto	Coverage for rental car during repair period
Auto	Reimbursement for property repairs
Auto	Collision
Health	Hospital stays
Health	Doctor visits
Health	Prescription medications

Rulebases in Insurance Model

The Insurance model comprises the following rulebases:

Address	Claim
---------	-------

ClaimType	ConstructionType
Contact	ContactEmail
ContactPhone	ContactPhoneORG
CONTRACT	COVERAGE
COVERAGETYPE	CUSTOMERPROFILE
EMAIL	EMAILADDRESS
ENDORSMENT	HasContact
HOUSEHOLD	Identity
INSURABLEOBJECT	LivesAt
LocateAt	NOTES
OPENINGHOURS	ORGANIZATION
OUTCOME	PERSON
PHONE	POLICY
REPAIRFACILITY	ROOFTYPE
SOURCEREERENCE	VEHICLEMAKE



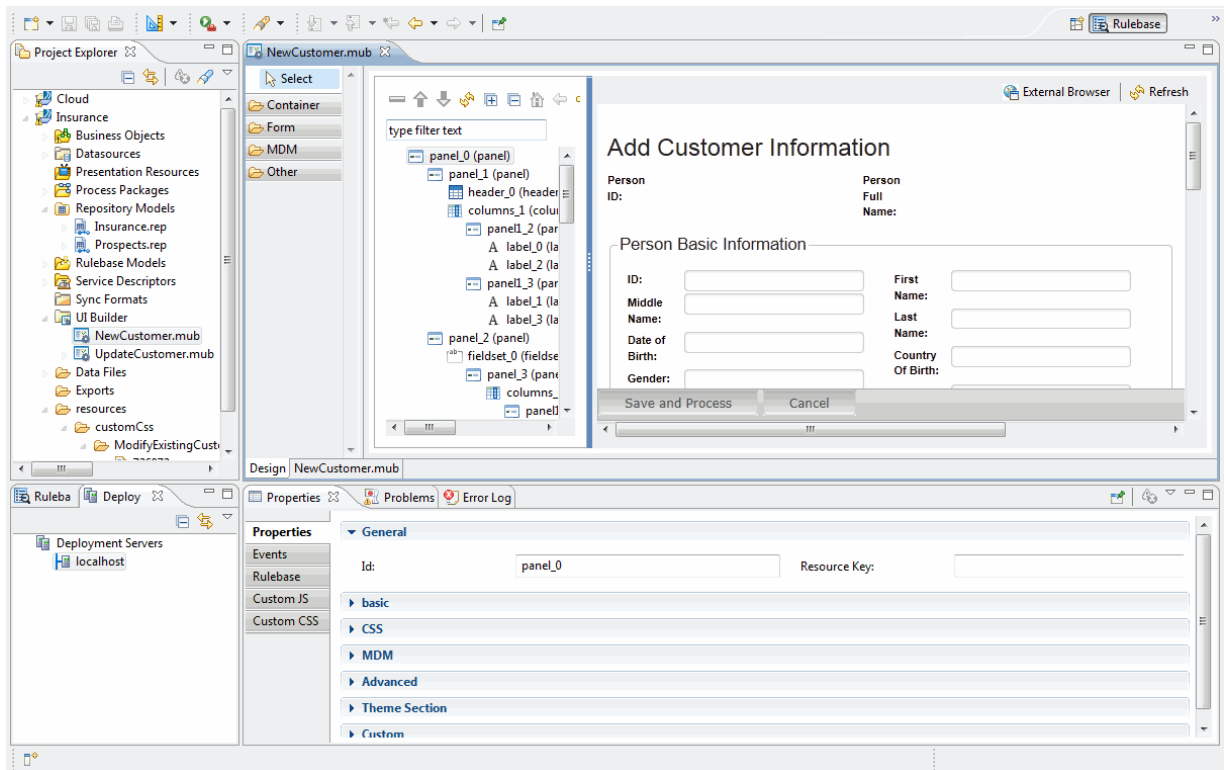
UI Pages in Insurance Model

Custom UI pages for adding and modifying customer details.

The Insurance model comprises the following UI pages:

- NewCustomer.mub
- UpdateCustomer.mub

After creating the custom UI pages, follow the instructions in *TIBCO MDM UI Builder User's Guide* on how to generate the WSDL services, deploy the services and the custom UI pages on the TIBCO MDM server.



Perspectives in Insurance Model

Using perspective, you can view a subset of a relationship, repository attributes, and relationship attributes of Insurance Model.

The Insurance model comprises of the following perspectives:

- CLAIM
- OrganizationDetails
- OrganizationPolicyDetails
- PersonalInformation
- PolicyDetails
- Details