

TIBCO Spotfire® Data Source for ActiveSpaces®

User's Guide

*Software Release 1.1
December 2015*

Important Information

SOME TIBCO SOFTWARE EMBEDS OR BUNDLES OTHER TIBCO SOFTWARE. USE OF SUCH EMBEDDED OR BUNDLED TIBCO SOFTWARE IS SOLELY TO ENABLE THE FUNCTIONALITY (OR PROVIDE LIMITED ADD-ON FUNCTIONALITY) OF THE LICENSED TIBCO SOFTWARE. THE EMBEDDED OR BUNDLED SOFTWARE IS NOT LICENSED TO BE USED OR ACCESSED BY ANY OTHER TIBCO SOFTWARE OR FOR ANY OTHER PURPOSE.

USE OF TIBCO SOFTWARE AND THIS DOCUMENT IS SUBJECT TO THE TERMS AND CONDITIONS OF A LICENSE AGREEMENT FOUND IN EITHER A SEPARATELY EXECUTED SOFTWARE LICENSE AGREEMENT, OR, IF THERE IS NO SUCH SEPARATE AGREEMENT, THE CLICKWRAP END USER LICENSE AGREEMENT WHICH IS DISPLAYED DURING DOWNLOAD OR INSTALLATION OF THE SOFTWARE (AND WHICH IS DUPLICATED IN THE LICENSE FILE) OR IF THERE IS NO SUCH SOFTWARE LICENSE AGREEMENT OR CLICKWRAP END USER LICENSE AGREEMENT, THE LICENSE(S) LOCATED IN THE "LICENSE" FILE(S) OF THE SOFTWARE. USE OF THIS DOCUMENT IS SUBJECT TO THOSE TERMS AND CONDITIONS, AND YOUR USE HEREOF SHALL CONSTITUTE ACCEPTANCE OF AND AN AGREEMENT TO BE BOUND BY THE SAME.

TIBCO, Two-Second Advantage, TIBCO Spotfire Data Source for ActiveSpaces, TIBCO ActiveSpaces, TIBCO Spotfire, TIBCO Spotfire Server, TIBCO Spotfire Web Player, TIBCO Spotfire Statistics Services, TIBCO Enterprise Runtime for R, TIBCO Spotfire S+, and TIBCO Spotfire Automation Services are either registered trademarks or trademarks of TIBCO Software Inc. in the United States and/or other countries.

All other product and company names and marks mentioned in this document are the property of their respective owners and are mentioned for identification purposes only.

THIS SOFTWARE MAY BE AVAILABLE ON MULTIPLE OPERATING SYSTEMS. HOWEVER, THIS SOFTWARE MAY BE AVAILABLE ON MULTIPLE OPERATING SYSTEMS. HOWEVER, NOT ALL OPERATING SYSTEM PLATFORMS FOR A SPECIFIC SOFTWARE VERSION ARE RELEASED AT THE SAME TIME. SEE THE README FILE FOR THE AVAILABILITY OF THIS SOFTWARE VERSION ON A SPECIFIC OPERATING SYSTEM PLATFORM.

THIS DOCUMENT IS PROVIDED "AS IS" WITHOUT WARRANTY OF ANY KIND, EITHER EXPRESS OR IMPLIED, INCLUDING, BUT NOT LIMITED TO, THE IMPLIED WARRANTIES OF MERCHANTABILITY, FITNESS FOR A PARTICULAR PURPOSE, OR NON-INFRINGEMENT.

THIS DOCUMENT COULD INCLUDE TECHNICAL INACCURACIES OR TYPOGRAPHICAL ERRORS. CHANGES ARE PERIODICALLY ADDED TO THE INFORMATION HEREIN; THESE CHANGES WILL BE INCORPORATED IN NEW EDITIONS OF THIS DOCUMENT. TIBCO SOFTWARE INC. MAY MAKE IMPROVEMENTS AND/OR CHANGES IN THE PRODUCT(S) AND/OR THE PROGRAM(S) DESCRIBED IN THIS DOCUMENT AT ANY TIME.

THE CONTENTS OF THIS DOCUMENT MAY BE MODIFIED AND/OR QUALIFIED, DIRECTLY OR INDIRECTLY, BY OTHER DOCUMENTATION WHICH ACCOMPANIES THIS SOFTWARE, INCLUDING BUT NOT LIMITED TO ANY RELEASE NOTES AND "READ ME" FILES.

Copyright © 2014-2015 TIBCO Software Inc. ALL RIGHTS RESERVED.

Contents

Figures	v
Preface	vii
Related Documentation	viii
TIBCO Spotfire Data Source for ActiveSpaces Documentation	viii
Other TIBCO Product Documentation	viii
Typographical Conventions	ix
Connecting with TIBCO Resources	xi
How to Join TIBCOCommunity	xi
How to Access TIBCO Documentation	xi
How to Contact TIBCO Support	xi
Chapter 1 Product Introduction	1
Overview of Spotfire Data Source for ActiveSpaces	2
User Roles	2
Chapter 2 Deploying and Adding Spotfire Data Source for ActiveSpaces	3
Prerequisites	4
Installing ActiveSpaces on the Spotfire Client	4
Adding an ActiveSpaces Data Source	5
Deploying on Spotfire Servers	5
Updating to the Latest Version of the Spotfire Client	6
Connecting to an ActiveSpaces Data Source	9
ActiveSpaces Connection Settings	11
Chapter 3 Viewing ActiveSpaces Data	15
Viewing a Data Source Using a Data Table	16
Viewing a Data Source Using Spotfire Web Player	18
Chapter 4 Undeploying Spotfire Data Source for ActiveSpaces	21
Undeploying ActiveSpaces Data Source	22
Index	25

Figures

Figure 1	Spotfire Administration Console.....	6
Figure 2	Spotfire Client Logon	7
Figure 3	Update Prompt.....	7
Figure 4	Spotfire Start Page	9
Figure 5	ActiveSpaces Data Source Selection.....	10
Figure 6	Added ActiveSpaces Data Source	10
Figure 7	ActiveSpaces Configuration	11
Figure 8	Bar Chart	16
Figure 9	Graph of Score Results	17
Figure 10	Action Control Dialog	18
Figure 11	Entering and Running a Python Script.....	19
Figure 12	Override Setting Dialog	19
Figure 13	Save as Library Item Dialog	20
Figure 14	Web Player Data Display	20
Figure 15	Deployed Items	23

Preface

TIBCO Spotfire® Data Source for ActiveSpaces® provides the functionality to connect to an ActiveSpaces data grid and analyze data from one or more metaspaces in TIBCO Spotfire®.

Topics

- [Related Documentation, page viii](#)
- [Typographical Conventions, page ix](#)
- [Connecting with TIBCO Resources, page xi](#)

Related Documentation

This section lists documentation resources you may find useful.

TIBCO Spotfire Data Source for ActiveSpaces Documentation

The following documents form the TIBCO Spotfire Data Source for ActiveSpaces documentation set:

- *TIBCO Spotfire Data Source for ActiveSpaces User's Guide* Read this manual for instructions on using the product to connect to TIBCO ActiveSpaces®.
- *TIBCO Spotfire Data Source for ActiveSpaces Release Notes* Read the release notes for a list of new and changed features. This document also contains lists of known issues and closed issues for this release.

Other TIBCO Product Documentation

You may find it useful to read the documentation for the following TIBCO products:

- TIBCO ActiveSpaces software: TIBCO ActiveSpaces is a distributed data grid that stores customer data in a distributed network and provides for fast retrieval, data replication, and fault tolerance. The TIBCO ActiveSpaces documentation is located at the following URL on the TIBCO documentation site:

<https://docs.tibco.com/products/tibco-activespaces-enterprise-edition-2-1-6>




Typographical Conventions

The following typographical conventions are used in this manual:

Table 1 General Typographical Conventions

Convention	Use
<i>ENV_NAME</i> <i>TIBCO_HOME</i> <i>AS_HOME</i>	<p>TIBCO products such as TIBCO ActiveSpaces can be installed into an installation environment. A product installed into an installation environment does not access components in other installation environments. Incompatible products and multiple instances of the same product must be installed into different installation environments.</p> <p>In the case of TIBCO Spotfire Data Source for ActiveSpaces, you can perform a full installation of TIBCO ActiveSpaces, or you can simply copy the DLLs in the <i>AS_HOME/lib</i> directory to a directory on the Spotfire Client that is running TIBCO Spotfire Data Source for ActiveSpaces.</p> <p>If you perform a full installation of TIBCO ActiveSpaces, then the installation environment for TIBCO ActiveSpaces can consist of the following properties:</p> <ul style="list-style-type: none">• Name Identifies the installation environment. This name is referenced in TIBCO ActiveSpaces documentation as <i>AS_HOME</i>. On Microsoft Windows, the name is appended to the name of Windows services created by the installer and is a component of the path to the product shortcut in the Windows Start > All Programs menu.• Path The folder into which the product is installed. This folder is referenced in documentation as <i>TIBCO_HOME</i>. <p>A full installation of TIBCO ActiveSpaces installs into a directory within a <i>TIBCO_HOME</i>. This directory is referenced in documentation as <i>AS_HOME</i>. The default value of <i>AS_HOME</i> depends on the operating system. For example, on Windows systems, the default value is C:\tibco\as\2.1.</p>
code font	<p>Code font identifies commands, code examples, filenames, pathnames, and output displayed in a command window. For example:</p> <p>Use MyCommand to start the foo process.</p>

Table 1 General Typographical Conventions (Cont'd)

Convention	Use
bold code font	<p>Bold code font is used in the following ways:</p> <ul style="list-style-type: none">• In procedures, to indicate what a user types. For example: Type admin.• In large code samples, to indicate the parts of the sample that are of particular interest.• In command syntax, to indicate the default parameter for a command. For example, if no parameter is specified, MyCommand is enabled: MyCommand [enable disable]
<i>italic font</i>	<p>Italic font is used in the following ways:</p> <ul style="list-style-type: none">• To indicate a document title. For example: See <i>TIBCO ActiveMatrix BusinessWorks Concepts</i>.• To introduce new terms For example: A portal page may contain several portlets. <i>Portlets</i> are mini-applications that run in a portal.• To indicate a variable in a command or code syntax that you must replace. For example: MyCommand <i>PathName</i>
Key combinations	<p>Key name separated by a plus sign indicate keys pressed simultaneously. For example: Ctrl+C.</p> <p>Key names separated by a comma and space indicate keys pressed one after the other. For example: Esc, Ctrl+Q.</p>
	<p>The note icon indicates information that is of special interest or importance, for example, an additional action required only in certain circumstances.</p>
	<p>The tip icon indicates an idea that could be useful, for example, a way to apply the information provided in the current section to achieve a specific result.</p>
	<p>The warning icon indicates the potential for a damaging situation, for example, data loss or corruption if certain steps are taken or not taken.</p>

Connecting with TIBCO Resources

How to Join TIBCOCommunity

TIBCOCommunity is an online destination for TIBCO customers, partners, and resident experts. It is a place to share and access the collective experience of the TIBCO community. TIBCOCommunity offers forums, blogs, and access to a variety of resources. To register, go to <http://www.tibcommunity.com>.

How to Access TIBCO Documentation

You can access TIBCO documentation here:

<https://docs.tibco.com>

How to Contact TIBCO Support

For comments or problems with this manual or the software it addresses, contact TIBCO Support as follows:

- For an overview of TIBCO Support, and information about getting started with TIBCO Support, visit this site:

<http://www.tibco.com/services/support>

- If you already have a valid maintenance or support contract, visit this site:

<https://support.tibco.com>

Entry to this site requires a user name and password. If you do not have a user name, you can request one.

Chapter 1 **Product Introduction**

This chapter provides an overview of TIBCO Spotfire Data Source for ActiveSpaces.

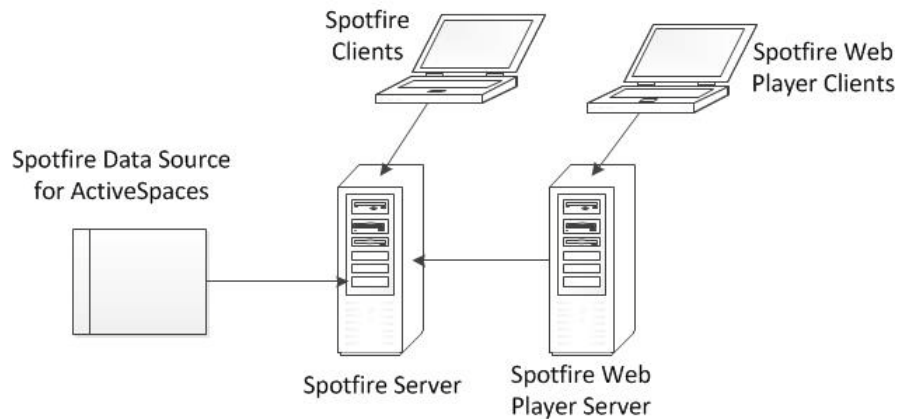
Topics

- [Overview of Spotfire Data Source for ActiveSpaces, page 2](#)

Overview of Spotfire Data Source for ActiveSpaces

TIBCO Spotfire is an enterprise-class analytics platform that helps both business and technical users to quickly explore data to develop actionable insights without IT intervention. TIBCO ActiveSpaces is a distributed peer-to-peer in-memory data grid, a form of virtual shared memory that leverages distributed hash table with configurable replication.

TIBCO Spotfire Data Source for ActiveSpaces works as a connector between TIBCO Spotfire and TIBCO ActiveSpaces. It provides the software package that you can deploy on a Spotfire server. After the deployment, you can connect to an ActiveSpaces data grid and analyze data from one or more metaspaces in TIBCO Spotfire.



User Roles

TIBCO Spotfire provides users with different user roles for installing, configuring, and administering different components of the system. Select the appropriate user role to deploy and add ActiveSpaces data source.

- **Spotfire Server Administrator** This user is responsible for installing and configuring the Spotfire server (or servers) and the Spotfire database. See the *TIBCO Spotfire Server Installation and Configuration* document about how to install and configure Spotfire servers.
- **Spotfire Admin** This user is responsible for setting up users and groups in the Spotfire system, assigning licenses and preferences to the Spotfire groups, setting up the Spotfire library, and deploying the Spotfire software package on a Spotfire server. See the *TIBCO Spotfire Deployment and Administration* document for more details.

Chapter 2

Deploying and Adding Spotfire Data Source for ActiveSpaces

This chapter describes how to deploy and add the ActiveSpaces data source in TIBCO Spotfire.

Topics

- [Prerequisites, page 4](#)
- [Adding an ActiveSpaces Data Source, page 5](#)
- [Connecting to an ActiveSpaces Data Source, page 9](#)

Prerequisites

Before deploying TIBCO Spotfire Data Source for ActiveSpaces, ensure that your system meets the following requirements:

- TIBCO Spotfire version 6.0, 6.5 or 7.x must be installed.
- You must have access to a running TIBCO Spotfire server that Spotfire can connect to.

For TIBCO Spotfire server installation instructions, see the *TIBCO Spotfire Server Installation and Configuration* document.

- At least one instance of TIBCO ActiveSpaces must be installed on a Spotfire client, as described in [Installing ActiveSpaces on the Spotfire Client](#).

Installing ActiveSpaces on the Spotfire Client

You have to install TIBCO ActiveSpaces on the Spotfire client machine where you add the ActiveSpaces data source. It is good practice to install TIBCO ActiveSpaces version 2.1.6 on the Spotfire client machine.

Complete these steps to install and configure TIBCO ActiveSpaces:

1. Install TIBCO ActiveSpaces on the Spotfire client machine.

For installation instructions, see the *TIBCO ActiveSpaces Installation* document.

2. Set the system PATH variable to point to the ActiveSpaces/lib directory:

- a. From the Desktop, right-click **My Computer** and click **Properties**.
- b. Click **Advanced system settings**.
- c. In the System Properties window, click **Environment Variables**.
- d. In the Environment Variables window, select the PATH variable from the list in the "System variables" section and click **Edit**.
- e. Edit the PATH setting to point to the ActiveSpaces /lib directory. For example, you can add the following to the PATH setting:

```
c:/tibco/as/2.1/lib
```

Directory settings are separated by semicolons.

- f. Click **OK**.

Adding an ActiveSpaces Data Source

You can view and analyze the ActiveSpaces data in TIBCO Spotfire by adding an ActiveSpaces data source to TIBCO Spotfire.

To add an ActiveSpaces data source, you have to complete the following tasks:

1. [Deploying on Spotfire Servers, page 5](#)
2. [Updating to the Latest Version of the Spotfire Client, page 6](#)

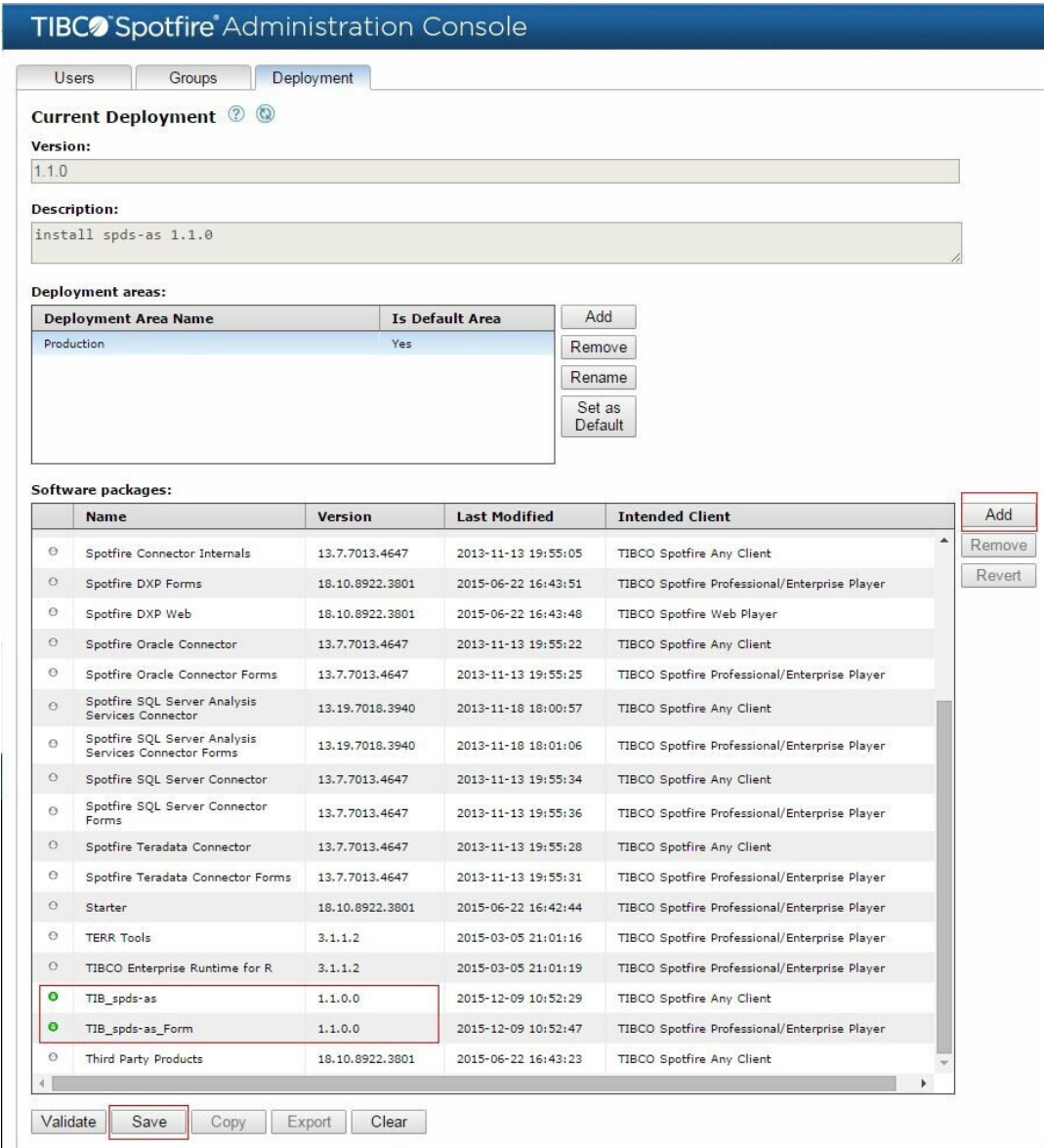
Deploying on Spotfire Servers

Before adding the ActiveSpaces data source in a Spotfire client, you have to deploy the software package that contains the ActiveSpaces data source on a Spotfire server using Spotfire Administration Console.

To deploy the ActiveSpaces data source:

1. Log on to Spotfire Administration Console and click the **Deployment** tab to open the Deployment page.
2. Click **Add** next to the "Software packages" table.
3. Select the following .spk files extracted from the TIBCO Spotfire Data Source for ActiveSpaces software package:
 - TIB_spds-as_1.1.0.spk
 - TIB_spds-as_Form_1.1.0.spk
4. Click **Save** to deploy the ActiveSpaces data source on the Spotfire server.

Figure 1 Spotfire Administration Console



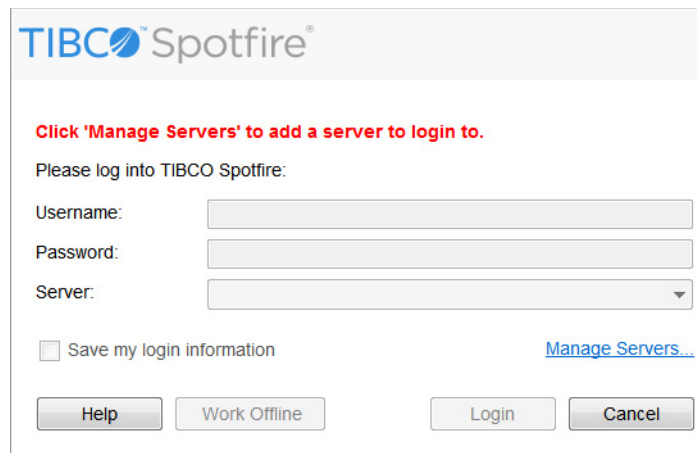
Updating to the Latest Version of the Spotfire Client

After deploying the ActiveSpaces data source on the Spotfire server, you have to update the Spotfire client to the latest version to make the ActiveSpaces data source available in the Spotfire client.

Complete these steps to update the Spotfire client:

1. Start the Spotfire client.
2. If you have not previously logged on to a Spotfire server, you are prompted to add a server, as shown in [Figure 2](#). Click **Manage Servers** to add the server where the ActiveSpaces data source is deployed:
 - a. In the Manage Servers dialog, click **Add**.
 - b. In the Add Server dialog, enter the URL for the Spotfire server, and then click **Add**.
 - c. Click **OK** to save your configurations and close the Manager Servers dialog.

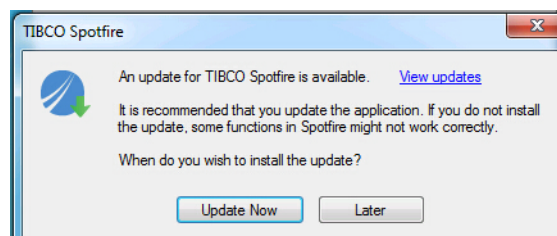
Figure 2 Spotfire Client Logon



The image shows the TIBCO Spotfire logon dialog box. At the top is the TIBCO Spotfire logo. Below it, a red text prompt says "Click 'Manage Servers' to add a server to login to." followed by "Please log into TIBCO Spotfire:". There are three input fields: "Username:", "Password:", and "Server:". Below the "Server:" field is a checkbox labeled "Save my login information" and a blue hyperlink "Manage Servers...". At the bottom are four buttons: "Help", "Work Offline", "Login", and "Cancel".

3. Enter the user name and password for the specified Spotfire server and click **Login**.
4. Click **Update Now** when you are informed that there are available updates.
The Spotfire client downloads the updates from the Spotfire server.

Figure 3 Update Prompt



5. Click **Install** when you are prompted to install the update.

When the deployment and update are completed, you are ready to connect to an ActiveSpaces data source to view ActiveSpaces data in Spotfire, see [Connecting to an ActiveSpaces Data Source on page 9](#) for more details.

Connecting to an ActiveSpaces Data Source

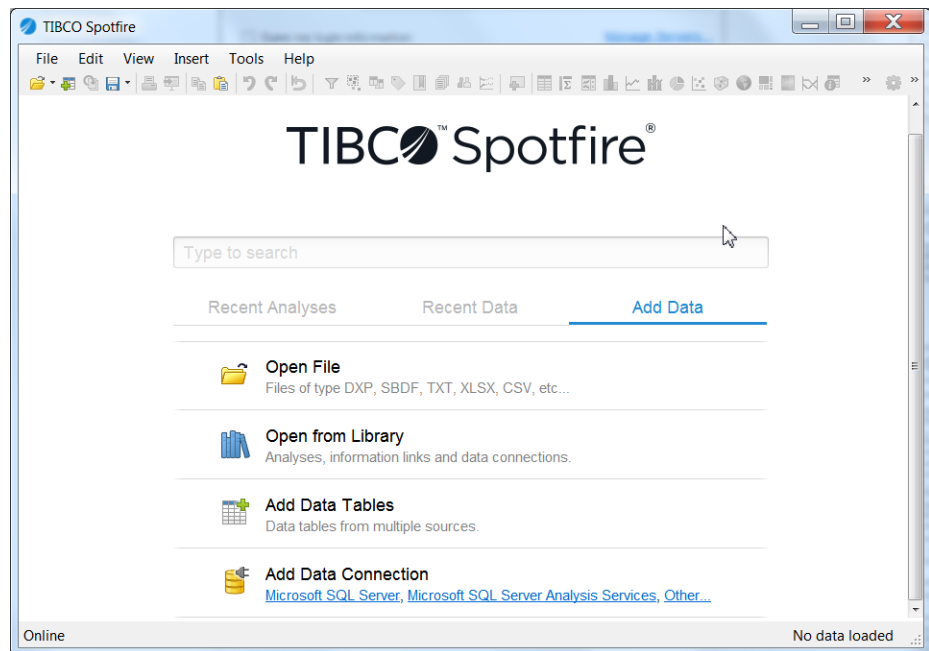
After deploying ActiveSpaces data source on a Spotfire server and updating the corresponding Spotfire client, you can connect to an ActiveSpaces data grid and start analyzing ActiveSpaces data.

Complete these steps to connect to an ActiveSpaces data source:

1. Log on to the Spotfire client.

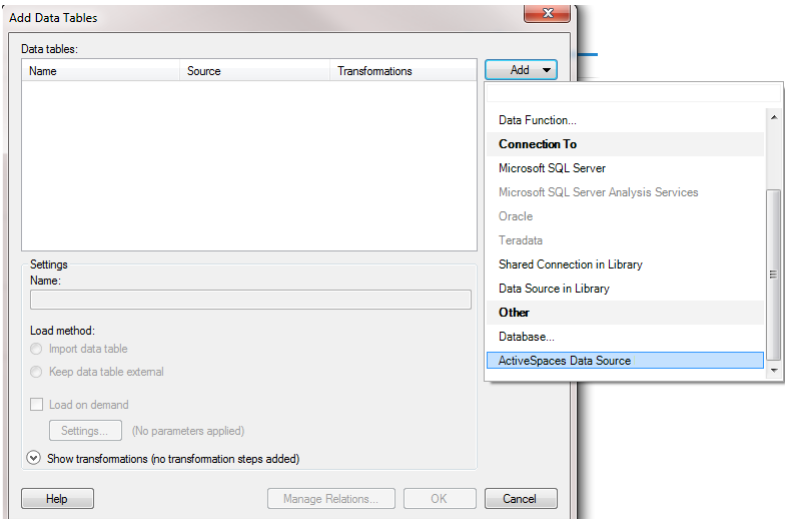
TIBCO Spotfire start page is displayed.

Figure 4 Spotfire Start Page



2. Click **Add Data Tables**.
3. In the Add Data Tables dialog, click **Add**.
4. Scroll down to the **Other** section and select **ActiveSpaces Data Source**, as shown in [Figure 5](#).

Figure 5 ActiveSpaces Data Source Selection

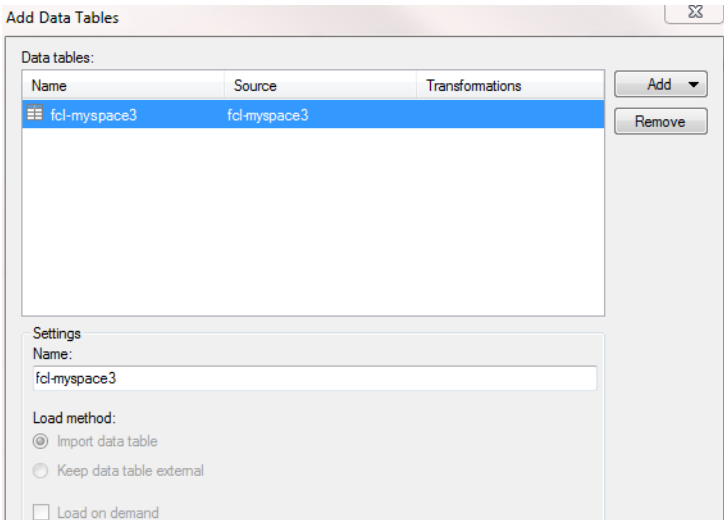


5. In the displayed ActiveSpaces window, provide the required information to connect to ActiveSpaces. See [ActiveSpaces Connection Settings on page 11](#) for more details.

6. Click **Connect** to connect to the specified space.

The added ActiveSpaces data source is displayed in the "Data tables" list.

Figure 6 Added ActiveSpaces Data Source



7. Click **OK** to load data to Spotfire.

See [Viewing a Data Source Using a Data Table on page 16](#) for more details about how to view data in TIBCO Spotfire.

ActiveSpaces Connection Settings

Refer to the following information to configure a connection to TIBCO ActiveSpaces.

Figure 7 ActiveSpaces Configuration

The type of authentication:
system

Token file:
Browse...

Token password:

Domain:

Username:

Password:

Discover Spaces

Available spaces:
myspace

Limit by query (optional):

Limit the number of tuples returned (optional):

Prefetch number (optional):
50000

Timeout in seconds (optional):

Help Connect Cancel

Table 2 ActiveSpaces Connection Settings (Sheet 1 of 4)

Option	Description
Authentication Type	Select an authentication type to use when connecting to a metaspace: <ul style="list-style-type: none">• None: no authentication is required.• System: user name and password authentication is used to authenticate the user.

Table 2 *ActiveSpaces Connection Settings (Sheet 2 of 4)*

Option	Description
The following fields are displayed when you select the System authentication.	
Token file	Click Browse to select the token file used to connect to the metaspace.
Token password	Enter the password of the selected token file.
Domain	Enter the login domain name.
Username	Enter the login user name.
Password	Enter the login password.

Table 2 ActiveSpaces Connection Settings (Sheet 3 of 4)

Option	Description
Discovery URL	<p>Specify the discovery URL you want to use when connecting to a metaspace.</p> <p>You can use the following formats to specify the Discovery URL:</p> <ul style="list-style-type: none">tibpgm URL format: <code>tibpgm://[dport]/[interface];[discovery group address]/[option=value;]*</code> For example: <code>tibpgm://8088/0.0.0.0;239.8.8.8</code>Listen URL format: You can specify a single interface or specify multiple IP addresses to discover members of an ActiveSpaces cluster.<ul style="list-style-type: none">— To specify a single interface, enter <code>tcp://<interface>:<listen_port></code> where <code>interface</code> is the IP address of an interface and <code>listen_port</code> is the name of the listener port to use. For example: <code>tcp://192.168.67.51:11111</code>— To specify multiple IP addresses (to identify multiple cluster members), enter the discovery URL in the following format: <code>tcp://ip1[:port1];ip2[:port2],...</code> For example: <code>tcp://192.168.67.51:11111;192.168.67.52:12345</code>Remote listen URL format: If you are using a remote listen URL, enter the command using this format: <code>tcp://<interface>:<remote_listen_port>?remote=true</code> For example: <code>tcp://192.168.67.51:22222?remote=true</code>

Table 2 ActiveSpaces Connection Settings (Sheet 4 of 4)

Option	Description
Metaspace	<p>Specify the name of the metaspace you want to connect to.</p> <p>A metaspace is a virtual entity that contains spaces where actual data is stored.</p>
Discover Spaces	<p>Click this button to find the spaces that are available in the specified metaspace.</p>
Available spaces	<p>Select the space that you want to load data from.</p> <p>A space provides shared virtual storage for data.</p>
Limit by query (optional)	<p>Optionally, specify a query to limit the amount of data returned from ActiveSpaces. For example:</p> <p>Columnname="value"</p>
Limit the number of tuples returned (optional)	<p>Optionally, specify the number of the tuples returned from ActiveSpaces.</p>
Prefetch number (optional)	<p>Optionally, specify the number of entries to fetch from the connected space each time the browser retrieves more entries to buffer.</p>
Timeout (optional)	<p>Optionally, specify how long (in seconds) Spotfire has to wait for data to be returned from ActiveSpaces. This is useful for large data sets.</p>

Chapter 3 **Viewing ActiveSpaces Data**

This chapter describes how to view ActiveSpaces data in TIBCO Spotfire.

You can view ActiveSpaces data either in the Spotfire client by adding an ActiveSpaces data table, or in Spotfire Web Player by running a Python script on a Spotfire server.

Topics

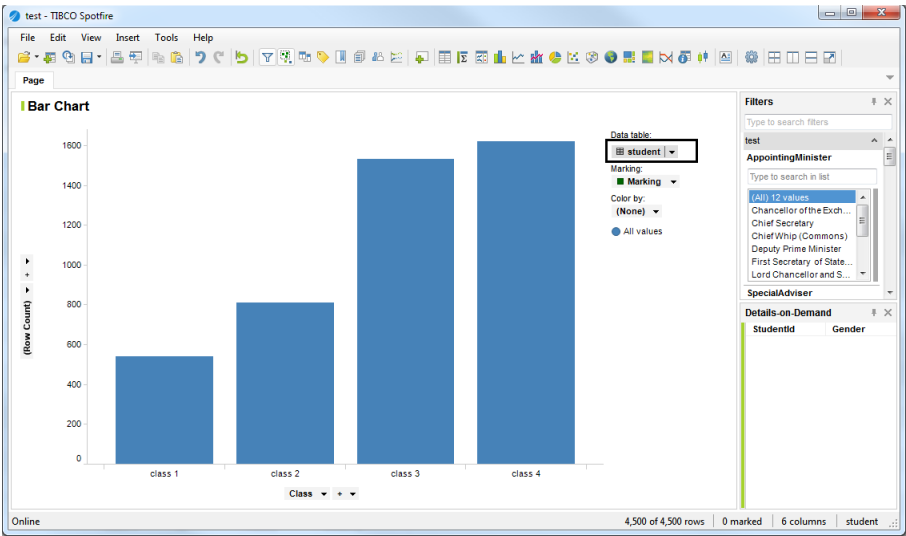
- [Viewing a Data Source Using a Data Table, page 16](#)
- [Viewing a Data Source Using Spotfire Web Player, page 18](#)

Viewing a Data Source Using a Data Table

After adding the ActiveSpaces data source, as described in [Connecting to an ActiveSpaces Data Source on page 9](#), the data loaded from the connected space is displayed on the Spotfire Data page.

The Spotfire client displays a bar chart of the data that matches your specified filter criteria, as shown in [Figure 8](#).

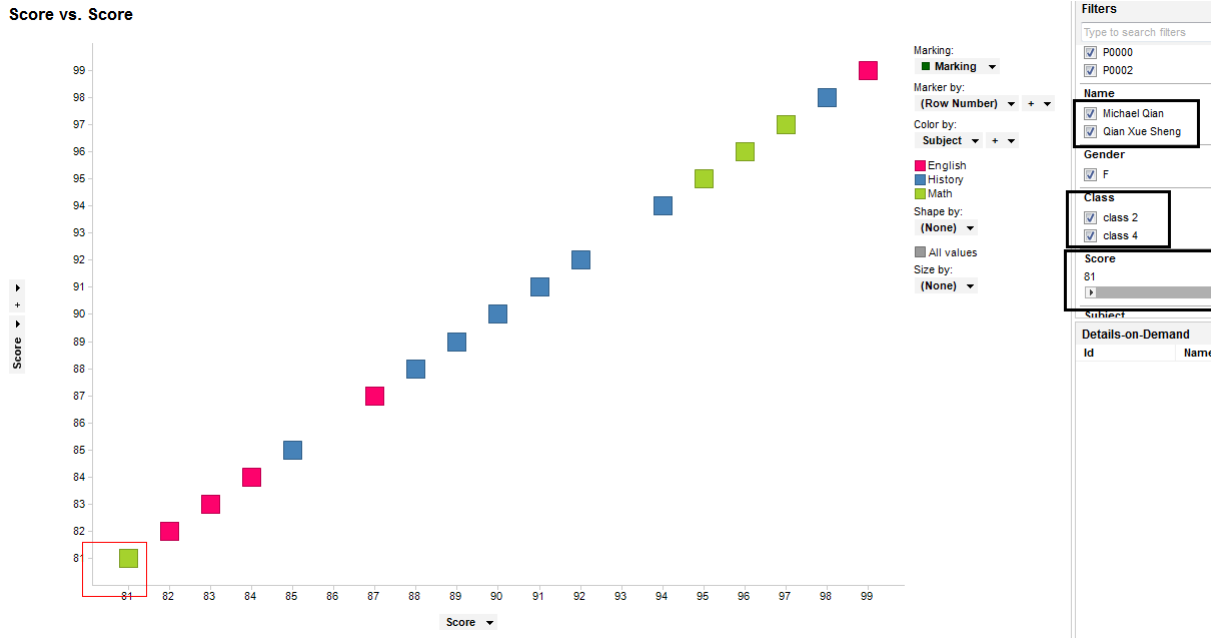
Figure 8 Bar Chart



You can view the loaded data in other types of chart by clicking the corresponding chart icon on the Spotfire client menu bar.

For example, you can choose a graph view, as shown in [Figure 9](#), and click the combination box to switch between different data from different ActiveSpaces.

Figure 9 Graph of Score Results



Viewing a Data Source Using Spotfire Web Player

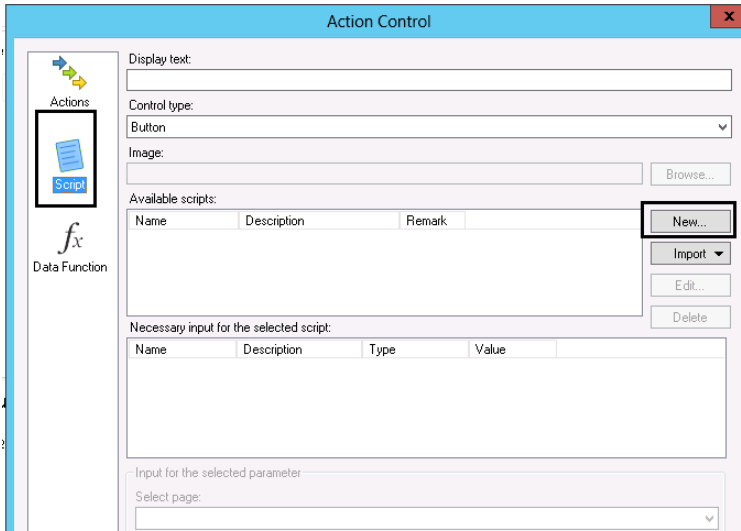
TIBCO Spotfire® Web Player provides the Spotfire visualizations and graphics in a web browser.

After deploying the TIBCO Spotfire Data Source for ActiveSpaces on a Spotfire server, you can view the ActiveSpaces Data Source on Spotfire Web Player by using a Python script.

To view a data source using Spotfire Web Player, complete these steps:

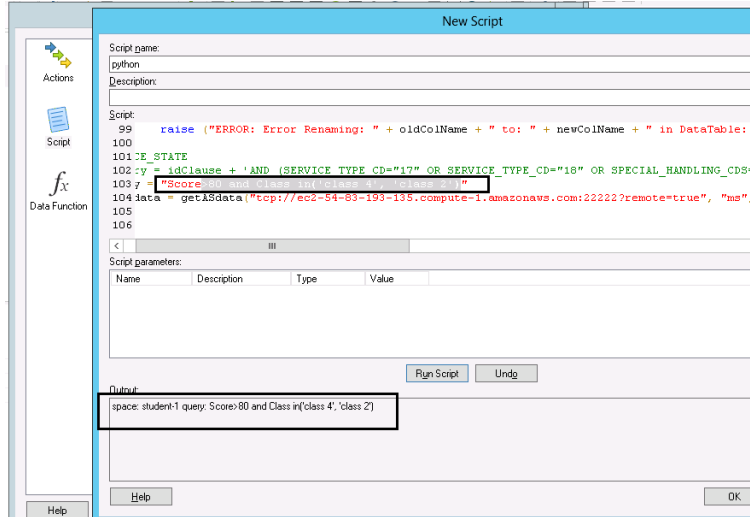
- 1. Log on to the Spotfire Web Player server.
- 2. Enter the following commands:
`cd ${webplayer_home}\webroot\bin\Tools directory`
`webupdate.bat`
- 3. Start the Spotfire client.
- 4. From the Spotfire start page menu, select **Insert > New Text Area** to open the Action Control dialog.

Figure 10 Action Control Dialog



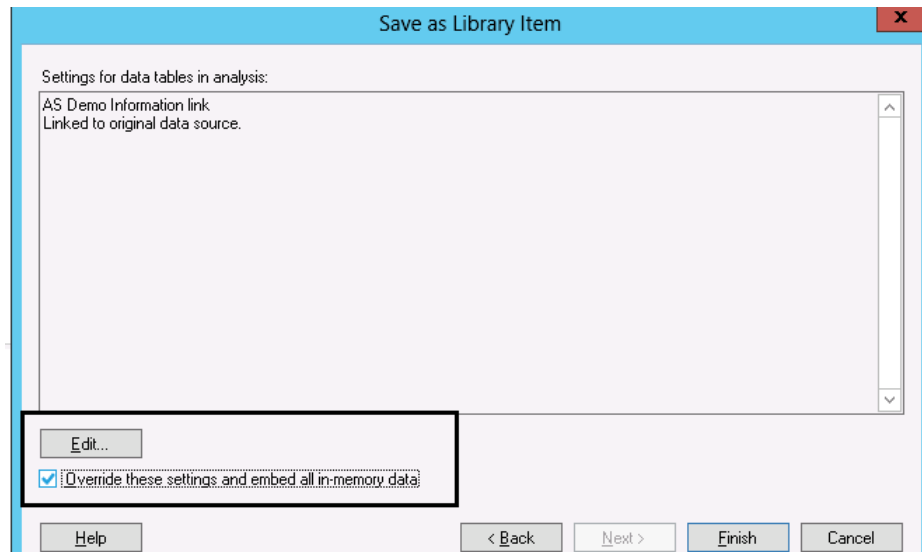
- 5. Click **Script**.
- 6. Enter your Python script, and then click **Run Script**.

Figure 11 Entering and Running a Python Script



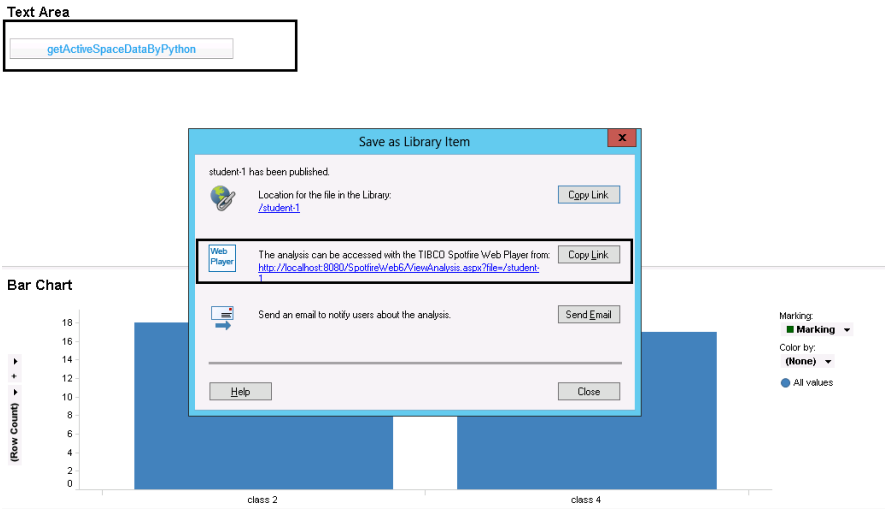
7. Click **OK**, and then save the script as a library item.
8. In the Save as Library Item dialog, select the **Override these settings and embed all in-memory data** check box.

Figure 12 Override Setting Dialog



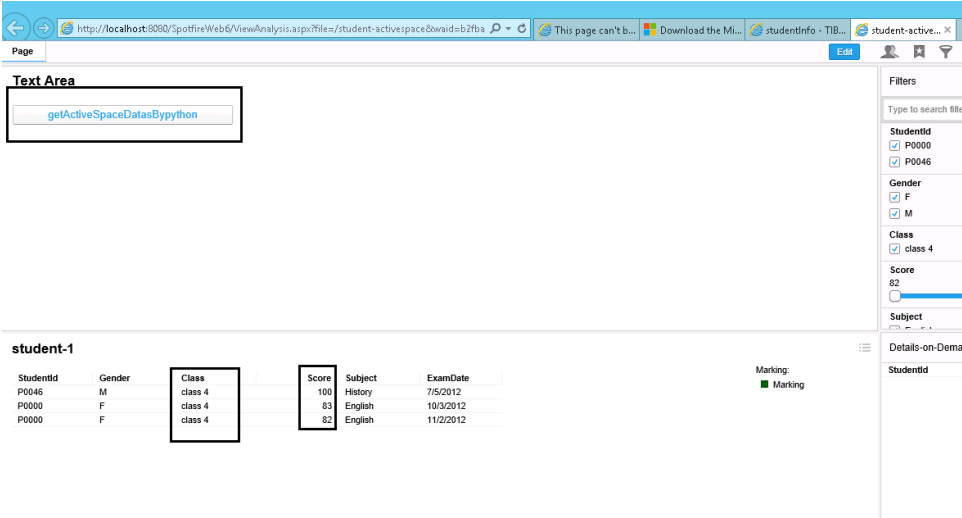
After selecting the **Override these settings and embed all in-memory data** check box, another dialog is displayed, as shown in [Figure 13](#).

Figure 13 Save as Library Item Dialog



9. In the Save as Library Item dialog, click the link in the Web Player section.
- Web Player saves the item as a library item and displays the data in the selected link, as shown in Figure 14.

Figure 14 Web Player Data Display



Chapter 4

Undeploying Spotfire Data Source for ActiveSpaces

This chapter describes how to undeploy TIBCO Spotfire Data Source for ActiveSpaces.

Topics

- [Undeploying ActiveSpaces Data Source, page 22](#)

Undeploying ActiveSpaces Data Source

You can use Spotfire Administration Console to undeploy the ActiveSpaces data source. After undeploying, the ActiveSpaces data source is not available in the corresponding Spotfire client.

Complete these steps to undeploy the ActiveSpaces data source:

1. Log on to Spotfire Administration Console and click the **Deployment** tab to open the Deployment page.
2. From the "Software packages" table, select `TIB_spds-as_1.1.0.spk` and `TIB_spds-as_Form_1.1.0`.
3. Click **Remove**, and then click **Save**.

Figure 15 Deployed Items

Users

Groups

Deployment

Current Deployment ? ⓘ

Version:
 1.1.0

Description:
 install spds-as 1.1.0

Deployment areas:

Deployment Area Name	Is Default Area
Production	Yes

Add
Remove
Rename
Set as Default

Software packages:

	Name	Version	Last Modified	Intended Client
○	Spotfire Connector Internals	13.7.7013.4647	2013-11-13 19:55:05	TIBCO Spotfire Any Client
○	Spotfire DXP Forms	18.10.8922.3801	2015-06-22 16:43:51	TIBCO Spotfire Professional/Enterprise Player
○	Spotfire DXP Web	18.10.8922.3801	2015-06-22 16:43:48	TIBCO Spotfire Web Player
○	Spotfire Oracle Connector	13.7.7013.4647	2013-11-13 19:55:22	TIBCO Spotfire Any Client
○	Spotfire Oracle Connector Forms	13.7.7013.4647	2013-11-13 19:55:25	TIBCO Spotfire Professional/Enterprise Player
○	Spotfire SQL Server Analysis Services Connector	13.19.7018.3940	2013-11-18 18:00:57	TIBCO Spotfire Any Client
○	Spotfire SQL Server Analysis Services Connector Forms	13.19.7018.3940	2013-11-18 18:01:06	TIBCO Spotfire Professional/Enterprise Player
○	Spotfire SQL Server Connector	13.7.7013.4647	2013-11-13 19:55:34	TIBCO Spotfire Any Client
○	Spotfire SQL Server Connector Forms	13.7.7013.4647	2013-11-13 19:55:36	TIBCO Spotfire Professional/Enterprise Player
○	Spotfire Teradata Connector	13.7.7013.4647	2013-11-13 19:55:28	TIBCO Spotfire Any Client
○	Spotfire Teradata Connector Forms	13.7.7013.4647	2013-11-13 19:55:31	TIBCO Spotfire Professional/Enterprise Player
○	Starter	18.10.8922.3801	2015-06-22 16:42:44	TIBCO Spotfire Professional/Enterprise Player
○	TERR Tools	3.1.1.2	2015-03-05 21:01:16	TIBCO Spotfire Professional/Enterprise Player
○	TIBCO Enterprise Runtime for R	3.1.1.2	2015-03-05 21:01:19	TIBCO Spotfire Professional/Enterprise Player
●	TIB_spds-as	1.1.0.0	2015-12-09 10:52:29	TIBCO Spotfire Any Client
●	TIB_spds-as_Form	1.1.0.0	2015-12-09 10:52:47	TIBCO Spotfire Professional/Enterprise Player
○	Third Party Products	18.10.8922.3801	2015-06-22 16:43:23	TIBCO Spotfire Any Client

Add
Remove
Revert

Index

A

add ActiveSpaces data source [9](#)

C

connecting to ActiveSpaces [9](#)

customer support [xi](#)

D

deploy process

 deploy on Spotfire servers [5](#)

 update Spotfire client [6](#)

P

prerequisites of deployment [4](#)

S

support, contacting [xi](#)

T

technical support [xi](#)

TIBCO ActiveSpaces [2](#)

TIBCO Spotfire [2](#)

TIBCO_HOME [ix](#)

U

undeploy [22](#)

user roles [2](#)

V

view data

 web player [18](#)