

TIBCO Statistica®

Options Configuration

Version 14.0

December 2020



Contents

TIBCO Documentation and Support Services	3
Overview	5
Default Configuration	6
Installation	6
Statistica Server Configuration	8
Edit Default Options in Initial Statistica Desktop	9
Edit Default Options in Permanent Statistica Desktop	10
Additional Information	11
Legal and Third-Party Notices	12

TIBCO Documentation and Support Services

How to Access TIBCO Documentation

Documentation for TIBCO products is available on the TIBCO Product Documentation website, mainly in HTML and PDF formats.

The TIBCO Product Documentation website is updated frequently and is more current than any other documentation included with the product. To access the latest documentation, visit <https://docs.tibco.com>.

Product-Specific Documentation

Documentation for TIBCO Statistica® is available on the [TIBCO Statistica® Product Documentation](#) page.

The following documents for this product can be found on the TIBCO Documentation site:

- *TIBCO Statistica® Release Notes*
- *TIBCO Statistica® Installation*
- *TIBCO Statistica® Quick Reference*
- *TIBCO Statistica® Product Traceability*
- *TIBCO Statistica® Configuration for Windows Server 2019*
- *TIBCO Statistica® Data Entry Administration*
- *TIBCO Statistica® Server Administrator's Guide*
- *TIBCO Statistica® Options Configuration*
- *TIBCO Statistica® R Integration: Features and Options*
- *TIBCO Statistica® Security Guide*
- *TIBCO Statistica® User's Guide*
- *TIBCO Statistica® Enterprise Manager Guide*
- *TIBCO Statistica® Statistica Object Model Guide*
- *TIBCO Statistica® Logistic Regression Formula Guide*
- *TIBCO Statistica® Stability Analysis Formula Guide*
- *TIBCO Statistica® Stepwise Model Builder Formula Guide*
- *TIBCO Statistica® Weight of Evidence Formula Guide*

The following documents for TIBCO® Data Science for TIBCO Spotfire® Analyst can be found on the [TIBCO Documentation site](#):

- *TIBCO® Data Science for TIBCO Spotfire® Analyst Release Notes*
- *TIBCO® Data Science for TIBCO Spotfire® Analyst User Guide*

The following documents for TIBCO® Data Science Service for TIBCO Spotfire® can be found on the [TIBCO Documentation site](#):

- *TIBCO® Data Science Service for TIBCO Spotfire® Release Notes*
- *TIBCO® Data Science Service for TIBCO Spotfire® Installation and Configuration Guide*
- *TIBCO® Data Science Service for TIBCO Spotfire® User Guide*

How to Contact TIBCO Support

You can contact TIBCO Support in the following ways:

- For an overview of TIBCO Support, visit <http://www.tibco.com/services/support>.
- For accessing the Support Knowledge Base and getting personalized content about products you are interested in, visit the TIBCO Support portal at <https://support.tibco.com>.
- For creating a Support case, you must have a valid maintenance or support contract with TIBCO. You also need a user name and password to log in to <https://support.tibco.com>. If you do not have a user name, you can request one by clicking Register on the website.

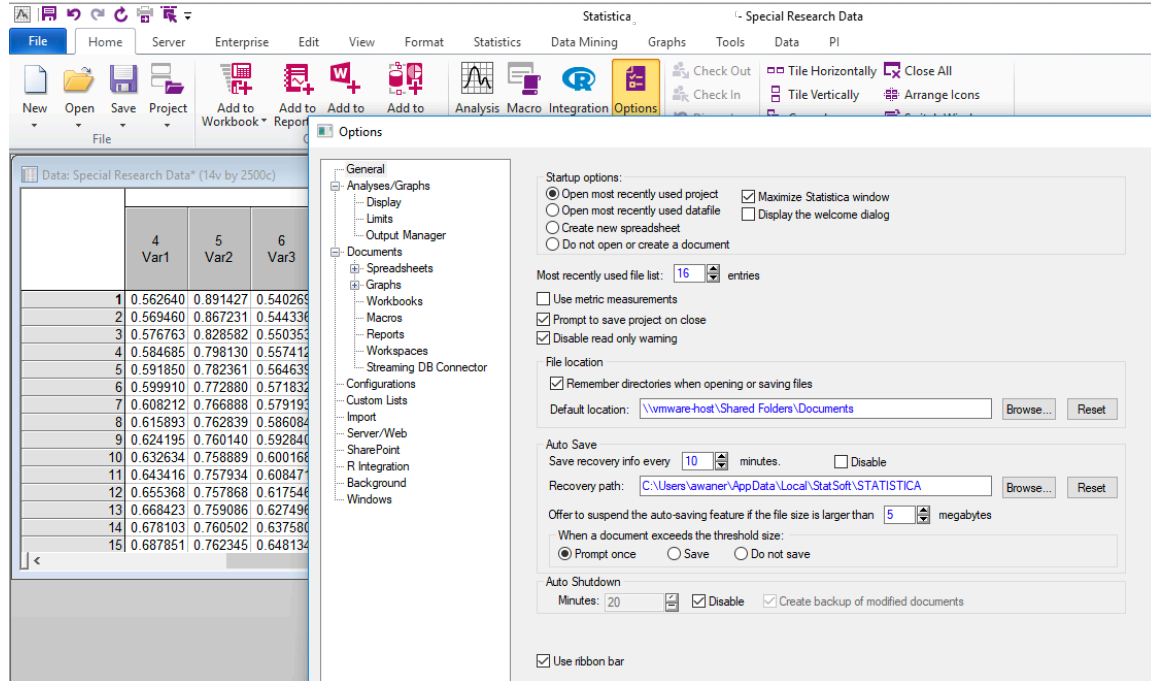
How to Join TIBCO Community

TIBCO Community is the official channel for TIBCO customers, partners, and employee subject matter experts to share and access their collective experience. TIBCO Community offers access to Q&A forums, product wikis, and best practices. It also offers access to extensions, adapters, solution accelerators, and tools that extend and enable customers to gain full value from TIBCO products. In addition, users can submit and vote on feature requests from within the [TIBCO Ideas Portal](#). For a free registration, go to <https://community.tibco.com>.

Overview

Statistica application preferences are stored in a `StatOpts.xml` file.

This file is installed with the Statistica application. Users can see these preferences by starting the Statistica application and selecting **Options** menu from the **Home** menu.



The `StatOpts.xml` file contains the following preferences:

- Statistica Desktop options:
 - User interface information (including customizations to the desktop user interface)
 - Default folder locations to store and look for files
 - Auto-save options
 - Auto-shutdown options
 - User prompts (optionally suppress, or control when to show warnings and error messages)
 - Memory and other performance options
 - Server integration options
- Statistica Desktop and Server options for input and output documents:
 - Spreadsheet formatting, performance, functionality, ...
 - Graph formatting, performance, functionality, ...
 - Workbook formatting, performance, functionality, ...
 - Macro formatting, performance, functionality, ...
 - Report formatting, performance, functionality, ...
 - Workspace formatting, performance, functionality, ...
 - In-Place Database formatting, performance, functionality, ...

Default Configuration

Overview

The default configuration of Statistica options starts each user with a set of predefined and hardcoded options, optimized for best performance. If you are using Statistica desktop, you can reconfigure the options and customize the desktop user interface to meet with their specific needs, and from then on, when the user restarts Statistica desktop they can use their own customized configuration. For customization methods related to Statistica Server (WebStatistica) configuration, see [Additional Information](#).

General Configuration

The configuration starts with a `StatOpts.xml` file located in the Statistica application path, typically `C:\Program Files\Statistica\Statistica X\`, where X is the version number of the Statistica installation. This file is set to read-only and contains an XML attribute to forward the application to use the Statistica options located in the Machine Store.

If the `StatOpts.xml` file is not present at the application path, Statistica tries to locate it in the User Store directly. If the file is not read-only, the XML attribute to forward the application is not defined, and the user has full access to edit files in the Statistica application path (not recommended), then Statistica uses the `StatOpts.xml` file there but does not go any further.

The Machine Store is the Windows program data, or All Users profile location. Typically this is the `C:\ProgramData\StatSoft\Statistica` folder. To confirm the location of this program data location, open a Windows command prompt and browse to `%allusersprofile%`. This file is also set to read-only and contains XML attributes.

If the file is not present in the Machine Store, and the user has access to this location, then another `StatOpts.xml` is created in this location in a subfolder with the full version of the Statistica application, but Statistica only uses the options in the User Store. If the file is not read-only, the XML attribute to forward the application is not defined, and the user has full access to edit files in the Machine Store (not recommended), then Statistica uses the `StatOpts.xml` file there and go no further.

The User Store is the Windows user profile location, which is typically in the `C:\Users\\AppData\Roaming\StatSoft\Statistica\<full Statistica version>` folder. To confirm the user profile location, open a Windows command prompt and browse to `%userprofile%`. This file is only created after Statistica desktop is started for the first time. This is the file that is edited whenever options or customizations are made during the user's session.

Installation

You must configure `StatOpts.xml` file only after you complete the following installations.

Single User

The `StatOpts.xml` files are created directly during the installation process (hardcoded as part of the installation process). The default `StatOpts.xml` file is created in the Statistica application path and Machine Store as described in the [Default Configuration](#) section. The `StatOpts.xml` file is created in the User Store the first time the user starts Statistica.

Statistica Server Workstation Installation

The Workstation Installation that comes as part of a Statistica Server or Concurrent Statistica installation is different from the single user installation as the server installation procedure must be performed first. After the server has been installed, it creates the workstation installation media that includes an opportunity to customize the `StatOpts.xml` file. This `StatOpts.xml` file is placed in the Statistica application path and Machine Store before running the installation process on each workstation.

In the Statistica application path on the server, folders are created for the 32-bit (Workstation Installer 32) and 64-bit (Workstation Installer 64) versions of the Statistica Server workstation. When users run the

`setup.exe` located in either of these folders, the installation process looks up and copies the `StatOpts.xml` file to the Statistica application path on the workstation. It then looks in the same source folder for the `StatSvr.xml` file and copies it to the Machine Store on the workstation (renaming it to `StatOpts.xml` when copied). The options cannot typically be directly influenced using these files unless changes are made to make the Statistica application path or Machine Store fully accessible to all the users on the workstation (not recommended). Other methods for customizing the options files are available in Statistica 9 and later.

Statistica Server Configuration

Overview

A Statistica Server installation involves both, the desktop Statistica and WebStatistica. After you load and configure desktop Statistica options, you can perform Statistica Server related configurations.

When using the web interface, most of the options are defined on the UI and are not stored in the `StatOpts.xml` file. However, the `StatOpts.xml` file located on the server is still used to define some of the options for the input and output documents, such as default spreadsheet and graph layouts.

Details

In Statistica 11 and earlier, the `StatOpts.xml` files located in the Statistica application folder could have its file attribute set to not read only, and have the XML attribute that forwards to the next store removed, and further customized to allow an administrator to define these options.

For Statistica 12 and later, the administrator can define a new string value called `ConfigPath` in the `HKEY_LOCAL_MACHINE\SOFTWARE\Classes\Statistica.Application` registry key, and define the fully qualified path location to a `StatOpts.xml` file to use on the server.

Remember the following points about the `ConfigPath`.

- When defining the `ConfigPath`, ensure that the path ends with a backward slash (`\`), for example, `C:\Statistica Options\`
- This path location must be fully accessible (everything except full control) to the user running the WebStatistica Service on the Statistica Server. By default, it is the local server SYSTEM user. The SYSTEM user account is created by the operating system during installation and is typically used to run services.

To create a `StatOpts.xml` file to use for desktop Statistica or WebStatistica, an administrator can open a Statistica desktop instance with the default setup, edit the options to meet the required need, being very careful to only use file paths that are available to all users, close Statistica desktop, and then copy the `StatOpts.xml` file from the administrator's User Store.



Edit Default Options in Initial Statistica Desktop

Overview

In Statistica desktop 10 and later, you can predefine the default options used when Statistica desktop is first launched. So, instead of using the default options as configured out of the box, an administrator can predefine a set of options that the user has to start with. However, after the user logs in to Statistica for the first time, they can customize the settings.

Details

This is accomplished by creating a `DefOpts.xml` file and placing it into the Statistica application path. To create a `DefOpts.xml` file to use, an administrator must open a Statistica desktop instance with the default setup, edit the options to meet the required need, being very careful to only use file paths that are available to all users, close Statistica desktop, copy the `StatOpts.xml` file from the administrator's User Store into a temporary location, rename it to `DefOpts.xml`, and paste it into the Statistica application path.

Additional functionality is available: By manually editing the `DefOpts.xml` file, the administrator can preconfigure the options so that ribbon bars are never available (in case customized menus or buttons are required). The administrator needs to add the `UseRibbonBar=0` attribute to the `General` element of the active configuration.

In the following example, the attribute is added to the `General` element with the `Initial` configuration:

```
<?xml version="1.0" encoding="UTF-8"?>
<StatOptsActiveConfig="Initial">
<Initial><General UseRibbonBar="0"/></Initial></StatOpts>
```

Edit Default Options in Permanent Statistica Desktop

Overview

In Statistica desktop, you can predefine the list of options to use every time Statistica is launched. So, instead of using the default options as configured out of the box, an administrator can predefine a set of options that the user has to start with. In this way, users can't edit options.

Details

The administrator can define a new string value called `ConfigPath` in the `HKEY_LOCAL_MACHINE\SOFTWARE\Classes\Statistica.Application` registry key, and define the fully qualified path location to a `StatOpts.xml` file to use on the server.



The path information must end in a `\` for example `C:\Statistica Options\`

This path location must be fully accessible (everything except full control) to the users running Statistica desktop and the user running the WebStatistica Service on the Statistica Server (by default it is the local server SYSTEM user).

The administrator also defines a new string called `DontForceUserStore` in the same `HKEY_LOCAL_MACHINE\SOFTWARE\Classes\Statistica.Application` registry key, and define the value of `true`.

To create a `StatOpts.xml` file to use for either case, an administrator can open a Statistica desktop instance with the default setup, edit the options to meet the required need, being very careful to only use file paths that are available to all users, close Statistica desktop, and then copy the `StatOpts.xml` file from the administrator's User Store.

After the `StatOpts.xml` file is ready, it can be copied in the prepared path to use (for example, `C:\Statistica Options`) and the file needs to be set to read only. This prevents users from editing and not have file locking issues.

Additional Information

There is a special command line argument available for Statistica desktop that the user can use to define which `StatOpts.xml` file to use when running Statistica. Information on this functionality is available in the Statistica help.

- `/statopts=` The Statistica options file, `statopts.xml`, contains all user customizations and settings. These include the settings on the Tools - Options pages, customization of menus/toolbars, dialog box positions, and more. By default, Statistica uses the `statopts.xml` file located in user-specific data area, for example, `C:\Documents and Settings\USERNAME\Application Data\StatSoft\statopts.xml`, where `USERNAME` is your specific user name.

When this command-line parameter is used, it overrides the default location of the `statopts.xml` file. The parameter immediately after the "=" is the full path name of the Statistica options file to use. For example:

```
statist.exe /statopts=c:\testdir\statopts.xml
```

However, there are two limitations to this command line argument functionality:

- If using Statistica Enterprise Manager, when editing reports or running reports in desktop Statistica, the `StatOpts.xml` in the User Store can still be used.
- To use this functionality you have to grant users everything except full control (read/write/execute) on the folder containing this file and you cannot set the file attribute to read-only. This avoids all users writing to the same file and there might be file locking issues if using Citrix or Terminal Services desktop Statistica.

Legal and Third-Party Notices

SOME TIBCO SOFTWARE EMBEDS OR BUNDLES OTHER TIBCO SOFTWARE. USE OF SUCH EMBEDDED OR BUNDLED TIBCO SOFTWARE IS SOLELY TO ENABLE THE FUNCTIONALITY (OR PROVIDE LIMITED ADD-ON FUNCTIONALITY) OF THE LICENSED TIBCO SOFTWARE. THE EMBEDDED OR BUNDLED SOFTWARE IS NOT LICENSED TO BE USED OR ACCESSED BY ANY OTHER TIBCO SOFTWARE OR FOR ANY OTHER PURPOSE.

USE OF TIBCO SOFTWARE AND THIS DOCUMENT IS SUBJECT TO THE TERMS AND CONDITIONS OF A LICENSE AGREEMENT FOUND IN EITHER A SEPARATELY EXECUTED SOFTWARE LICENSE AGREEMENT, OR, IF THERE IS NO SUCH SEPARATE AGREEMENT, THE CLICKWRAP END USER LICENSE AGREEMENT WHICH IS DISPLAYED DURING DOWNLOAD OR INSTALLATION OF THE SOFTWARE (AND WHICH IS DUPLICATED IN THE LICENSE FILE) OR IF THERE IS NO SUCH SOFTWARE LICENSE AGREEMENT OR CLICKWRAP END USER LICENSE AGREEMENT, THE LICENSE(S) LOCATED IN THE "LICENSE" FILE(S) OF THE SOFTWARE. USE OF THIS DOCUMENT IS SUBJECT TO THOSE TERMS AND CONDITIONS, AND YOUR USE HEREOF SHALL CONSTITUTE ACCEPTANCE OF AND AN AGREEMENT TO BE BOUND BY THE SAME.

This document is subject to U.S. and international copyright laws and treaties. No part of this document may be reproduced in any form without the written authorization of TIBCO Software Inc.

TIBCO, the TIBCO logo, the TIBCO O logo, Statistica, Spotfire, Process Tree Viewer, Process Data Explorer, Predictive Claims Flow, Making the World More Productive, Live Score, Electronic Statistics Textbook, Decisioning Platform, Data Health Check, and Better Decisioning are either registered trademarks or trademarks of TIBCO Software Inc. and/or its subsidiaries in the United States and/or other countries.

Java and all Java based trademarks and logos are trademarks or registered trademarks of Oracle and/or its affiliates.

All other product and company names and marks mentioned in this document are the property of their respective owners and are mentioned for identification purposes only.

This software may be available on multiple operating systems. However, not all operating system platforms for a specific software version are released at the same time. Please see the readme.txt file for the availability of this software version on a specific operating system platform.

THIS DOCUMENT IS PROVIDED "AS IS" WITHOUT WARRANTY OF ANY KIND, EITHER EXPRESS OR IMPLIED, INCLUDING, BUT NOT LIMITED TO, THE IMPLIED WARRANTIES OF MERCHANTABILITY, FITNESS FOR A PARTICULAR PURPOSE, OR NON-INFRINGEMENT.

THIS DOCUMENT COULD INCLUDE TECHNICAL INACCURACIES OR TYPOGRAPHICAL ERRORS. CHANGES ARE PERIODICALLY ADDED TO THE INFORMATION HEREIN; THESE CHANGES WILL BE INCORPORATED IN NEW EDITIONS OF THIS DOCUMENT. TIBCO SOFTWARE INC. MAY MAKE IMPROVEMENTS AND/OR CHANGES IN THE PRODUCT(S) AND/OR THE PROGRAM(S) DESCRIBED IN THIS DOCUMENT AT ANY TIME.

THE CONTENTS OF THIS DOCUMENT MAY BE MODIFIED AND/OR QUALIFIED, DIRECTLY OR INDIRECTLY, BY OTHER DOCUMENTATION WHICH ACCOMPANIES THIS SOFTWARE, INCLUDING BUT NOT LIMITED TO ANY RELEASE NOTES AND "READ ME" FILES.

This and other products of TIBCO Software Inc. may be covered by registered patents. Please refer to TIBCO's Virtual Patent Marking document (<https://www.tibco.com/patents>) for details.

Copyright © 1995-2020. TIBCO Software Inc. All Rights Reserved.