

TIBCO Statistica®

Installation Instructions

Version 14.0.0

December 2020

Document Updated: July 2021



Contents

Installation Overview	4
Named User Installation	5
Preinstallation Checklist for Named User Installation	5
Installing or Upgrading Statistica Named User Installation	6
Uninstalling Statistica Named User Installation	7
CNET Installation	8
CNET Server Installation or Upgrade	8
CNET Workstation Installation or Upgrade	9
CNET Server Uninstallation	9
CNET Workstation Uninstallation	10
TIBCO Statistica® Server	11
Preinstallation Checklist for Server Installation	12
Installing Statistica Server	15
Installing Statistica on the Workstation	18
Uninstalling Statistica Server	19
Uninstalling Statistica Workstation	19
User Accounts	19
Accessing the Web Server	20
TIBCO Statistica® Monitoring and Alerting Server	21
Preinstallation Checklist for MAS Server Installation	21
Installing MAS Server Installation	22
Uninstalling MAS Server Installation	23
TIBCO Statistica® Live Score Server	24
Preinstallation Checklist for Live Score Server Installation	25
Installing Live Score Server	25
Uninstalling Live Score Server	26
TIBCO Statistica® Data Entry Server	28
Preinstallation Checklist for Data Entry Server Installation	28
Installing Data Entry Server	29
Uninstalling Data Entry Server	30
Silent Installer	31
Upgrading TIBCO Statistica Server	33
Upgrading When SDMS Is Installed	33
Migrating Database	33
Finalizing Database Migration	36
Upgrading Statistica Server	37

Upgrading When SDMS Is Not Installed 38

TIBCO Documentation and Support Services 39

Legal and Third-Party Notices 41

Installation Overview

TIBCO Statistica® is also known as TIBCO Data Science Workbench.

Licensing Information

For licensing information, visit [TIBCO eDelivery](#) and locate the product. You must download and unzip TIB_stat_licensing.zip and read LICENSING_README.pdf to identify your installation keys. If your computer is not connected to the Internet during installation, then a temporary license file is installed. You can find your permanent license file by reading LICENSING_README.pdf in TIB_stat_licensing.zip.

Types of Installations

- **Single User or Named User Installation:** Also known as desktop user. It is without any add-ons. This installation does not include Statistica® Server, Statistica Live Score Server, Statistica Data Entry Server, Statistica Monitoring & Alerting Server, or CNET. To determine the type of install, look at the serial number provided to you in the fulfillment email. The serial number must not contain any one of the series of characters: CNET, ANCN, or WSEA. Do not use the named user installation if you have purchased an add-on.
- **CNET Installation:** This installation does not include Statistica Server, Statistica Live Score Server, Statistica Data Entry Server, or Statistica Monitoring & Alerting Server. This installation can be used by more than one user depending on the installation keys. To determine if you have this install, the serial number provided to you in the fulfillment email must contain CNET or CN near the end. For example, XXXXXXXXXXXXXCNETX-X.



This installation includes a license manager. For more information on licensing, refer to <https://support.tibco.com>.

- **Server Installation:** This installation includes Statistica Server and might include one or more of the following add-ons: Statistica Live Score Server, Statistica Data Entry Server, and Statistica Monitoring & Alerting Server. To determine if you have this install, the serial number provided to you in the fulfillment email must contain WSEA or DSEA near the end. For example, XXXXXXXXXXXXXWSEAXXX-X. This is determined by what has been purchased.



- This installation includes a license manager. For more information on licensing, refer to <https://support.tibco.com>.
- All server add-ons require the use of the same server installation keys. One set of keys is used for all the add-ons.

- **Data Science extension for Spotfire Analyst:** For enabling extension refer [Enabling Extension for Spotfire](#).
- **Data Science Service for Spotfire Server:** For deploying Data Science Service refer [Deploying Data Science Service](#) and for enabling capability refer [Enabling Data Science capability for Spotfire](#).

If you have purchased TIBCO Statistica® Comprehensive, use the installation instructions for the following components:

- TIBCO Statistica® Server
- TIBCO Statistica Data Entry Server
- TIBCO Statistica Monitoring & Alerting Server


Otherwise, if you have purchased without any add-ons, see the Named User Installation section.

If you have purchased an add-on, do not use the Named User Installation section. Use the installation that corresponds to the add-on that you have purchased.

Named User Installation

This licensing is also known as single user or desktop installation.

Minimum hardware requirements for standard client configuration

Requirement	Details
32-bit version	
Processor	500 MHz  32-bit version of Statistica requires processor support for the SSE2 instruction set.
Memory	8 GB RAM
Hard disk space for installation	10 GB
Minimum Scratch/Temporary Disk Space	50 GB recommended per user
Operating System	Microsoft Windows 8.1 or later
64-bit version	
Processor	2.0 GHz, 64-bit, quad core or more
Memory	8 GB RAM minimum, 16 GB recommended
Hard disk space for installation	10 GB
Minimum Scratch/Temporary Disk Space	50 GB recommended per user
Operating System	Microsoft Windows 10

Software Requirements

Requirement	Details
Microsoft .NET Framework	4.6.1
Microsoft Visual C++ Redistribute for Visual Studio 2015-2019	x64 and x86 - or just x86, depending on application bitness



Statistica installer delivers these requirements. It is optional to install them prior to running the installer.

Preinstallation Checklist for Named User Installation

Follow the checklist before starting the Named User Installation.

- Users on their client machines must log on with Administrator permissions or run the installer with elevated privileges to complete the client installation. You might be prompted to reboot to complete the installation.

- If you have any Statistica version prior to 14.0, uninstall it. Refer to the Uninstalling section for instructions. Note that this method of removing Statistica does not affect or delete any data files created with previous installations. After this is complete, proceed with the installation instructions.

Important Instructions

- We recommend the 64-bit version of Statistica with 64-bit processor and operating system.
- The 32-bit version of Statistica requires processor support for the SSE2 instruction set.
- The optional advanced hardware graphics support for transparency requires a graphics card that supports Direct2D.
- For integration with Python use 2.7.11 or 3.5.1. Panda 0.18.1 is also recommended for the extension functions. The comtypes module is required for Python integration.
- For R integration, R 3.6.1 is recommended.
- For H2O integration, H2O 3.10.4.7 and Sparkling Water 2.1.7 are recommended. This runs Spark 2.1.0.
- If you are installing server components of Statistica (or upgrading a previous version of Server components) of Statistica, you must review and install the latest applicable hotfixes. You can find information on how to install the latest hotfixes [here](#).

Installing or Upgrading Statistica Named User Installation

If you want to upgrade Statistica Named User Installation then first uninstall Statistica Named User Installation. For more information, see [Uninstall Statistica Named User Installation](#).

Procedure

1. [Uninstalling Statistica Named User Installation](#)
2. Download the installer and extract the contents of ZIP file to run the setup. Visit [TIBCO eDelivery](#) and locate the product.
3. Ensure that no other applications are running.
4. Run statistica.exe to begin the installation process.
 - a) The Welcome dialog box is displayed. Click the **Next** button.
5. In the Serial Number/Product Key dialog box, you might see fields already filled in. If the Serial Number and Product Key fields are empty, look for licensing.zip file that was downloaded from <https://edelivery.tibco.com> and read the readme.txt file to locate your keys.
6. To continue, click **Next**.
7. In the License Agreement dialog box, read the software license agreement. Select the **I accept the terms in the license agreement** option, and click **Next** if you agree with the terms and want to continue the installation process.
8. In the Setup Type dialog box, select either **Typical** or **Custom** option.
 - Typical setup installs Statistica with the most common options; this is the recommended selection.
 - Custom setup options are not covered in these instructions. If you have questions about the custom installation, contact [TIBCO support](#).
9. In the Product Registration dialog box, enter the requested information in the appropriate boxes. To continue, click **Next**.
10. Statistica Registration dialog box is displayed. Select Manual Registration and click **Next**.
11. Statistica is ready to install. To begin copying files to your machine, click the **Install** button.

12. You receive a message stating that the installation is complete. You might be prompted to reboot now or reboot later, depending on the components that were installed on your machine. If you are prompted, you need to reboot before you run Statistica.
13. To complete the installation process, click the **Finish** button.



If you are installing server components of Statistica (or upgrading a previous version of Server components) of Statistica, you must review and install the latest applicable hotfixes. You can find information on how to install the latest hotfixes [here](#).

Uninstalling Statistica Named User Installation

To uninstall Statistica, follow these steps:

Procedure

1. Ensure that no other applications are running.
2. In the Control Panel, select **Uninstall a program** located under Programs.
3. Scroll down through the list of programs and select **Statistica** and click **Uninstall**.
4. A message is displayed to confirm that you want to uninstall Statistica from your computer. Click the **Yes** button, and Statistica files are uninstalled.

CNET Installation

CNET installation is also known as Concurrent User Installation.

This installation does not include Statistica Server, Statistica Live Score Server, Statistica Data Entry Server, or Statistica Monitoring & Alerting Server.

The installation of the CNET version is a two-step process:

1. Server installation
2. Workstation installation


CNET Server Installation or Upgrade

If you to upgrade CNET Server Installation, uninstall the previous CNET Server version. For more information, see [CNET Server Uninstallation](#).

Prerequisites

- Download the installer from [TIBCO eDelivery](#) and extract the contents on the computer where you want to install the CNET Server.
- Ensure that you have the following information that must be entered during installation:
 - Serial Number
 - Product Keys
 - Install codes (if applicable)
- All Statistica products must be registered to obtain the full license. To register the product automatically (which is the recommended method), ensure that you are connected to the Internet.
- Minimum server requirement is Windows Server 2012 R2. Recommended version is Windows Server 2019.

Procedure

1. Run `statistica.exe` file from the extracted installation files to start the installer.
 2. Follow the wizard-led instructions till you reach the **Setup Type** page.
 3. On the **Setup Type** page, select an option based on your requirement.
 - **Typical:** Select this option to install Statistica with the standard options. This is the recommended selection.
 - **Custom:** You can select this option for a non-standard installation, for example, if you want to install Statistica on another drive or at a location other than the default, or to change the program features that are typically installed.
- 

Instructions for custom installation are not included in TIBCO documentation. If you have questions about the custom installation, contact [Statistica technical support](#).
4. On the **Start Menu Folder** page, enter the Start Menu folder name; the default name is Statistica. Select the check box **Create a desktop shortcut to Statistica** to create a shortcut. Click the **Next** button to continue.
 5. Statistica is ready to install. To begin copying files to your machine, click the **Install** button. This may take several minutes.
 6. You should receive a message stating that the installation is complete. If a reboot is required, you might be prompted to reboot now or reboot later, depending on the components that are installed on your

machine. If you are prompted, it is necessary to reboot before you run Statistica. Click the **Finish** button to complete the installation process.



If you are installing server components of Statistica (or upgrading a previous version of Server components) of Statistica, you must review and install the latest applicable hotfixes. You can find information on how to install the latest hotfixes [here](#).

What to do next

Share the Statistica executable directory. This shared folder needs to be available to all users who need to run the workstation installation. Users must have read and execute permissions to all files and subfolders.

CNET Workstation Installation or Upgrade

If you to upgrade CNET Server Installation, then uninstall CNET Workstation Installation. For more information, see [CNET Workstation Uninstallation](#).

If you want to access Statistica through a terminal server only, no workstation installation is necessary. If you want to install Statistica on the Workstation, follow these instructions.

Prerequisites

- Ensure that no other applications are running.

Procedure

1. Locate the share that you created in CNET Server installation procedure when the Statistica program files were installed on the server.
2. Run `statistica.exe` file in Workstation Installer 32 or Workstation Installer subfolder depending on the bitness of the workstation.
3. The Welcome dialog box is displayed. Click the **Next** button.
4. In the License Agreement dialog box, read the software license agreement. Select the **I accept the terms in the license agreement** option button, and click the **Next** button to continue the installation process.
5. Statistica is ready to install on your workstation. To begin copying files to your machine, click the **Install** button.
6. Your system is updated and program files are installed. In the Setup Wizard Completed dialog box, click the **Finish** button.
7. If you receive any Version Conflict messages, you can keep your existing file, click the **Yes** button.
8. If the workstation system files need to be updated, you must restart your computer to finish the installation process.
9. To start using Statistica, double-click the Statistica shortcut.



If you are installing server components of Statistica (or upgrading a previous version of Server components) of Statistica, you must review and install the latest applicable hotfixes. You can find information on how to install the latest hotfixes [here](#).

CNET Server Uninstallation

To uninstall the CNET Server, follow these steps:

Prerequisites

Ensure that no other applications are running.

Procedure

1. In the **Control Panel, Programs and Features**, scroll down through the list of programs and select **Statistica**. Right-click and select **Uninstall** to uninstall the program.
2. A message is displayed to confirm that you want to uninstall Statistica from your computer. Click the **Yes** button, and Statistica files are uninstalled.

CNET Workstation Uninstallation

To uninstall a Statistica workstation, follow these steps:

Prerequisites

Ensure that no other applications are running.

Procedure

1. In the **Control Panel**, select **Uninstall a program** located under **Programs**.
2. Scroll down through the list of programs and select **Statistica**.
3. Click **Uninstall** to uninstall the program.

TIBCO Statistica® Server

The Statistica Server is an analytic engine service with a web-based user interface. You can consume analytic tasks interactively or schedule them for automated processing using the Statistica Server.

Starting with Statistica 14.0.0, the versioning and approval features are contained within the Statistica Enterprise database and applications. The TIBCO Statistica Documentation Management System (SDMS) software is no longer needed. If you are using SDMS, see [Upgrading TIBCO Statistica](#).

You can download the Statistica installer from the following products on [TIBCO eDelivery](#):

- TIBCO Statistica Analyst
- TIBCO Statistica Comprehensive
- TIBCO Statistica Data Scientist
- TIBCO Statistica Modeler
- TIBCO Data Science - Author



If you are installing Server components of Statistica, or upgrading a previous version of Server components of Statistica, you must review and install the latest applicable hotfixes. You can find information on how to install the latest hotfixes [here](#).



If the licensing includes Statistica Data Entry Server, then these instructions install this product on the same server with Statistica Server software. You also see this product use the name Statistica Web Data Entry Server.

Minimum hardware and software requirements

Requirement	Details
Processor	1 GHz
Memory	8 GB RAM
Hard disk space for installation	10 GB
Minimum Scratch/Temporary Disk Space	50 GB or more
Network Bandwidth	100 MBits/s or faster
Operating System	Microsoft Windows Server 2016 or later

Recommended hardware and software requirements

Requirement	Details
Processor	2.0 GHz, 64-bit, quad core or more
Memory	16 GB RAM
Hard disk space for installation	10 GB
Disk Type	Review Performance with SSD vs HDD Drives

Requirement	Details
Minimum Scratch/Temporary Disk Space	100 GB or more
Network Bandwidth	1 GBits/s
Operating System	Microsoft Windows Server 2019

Software requirements

Requirement	Details
Microsoft Internet Information Server (IIS)	Installed and configured to run ISAPI and CGI applications. Read TIBstatconfigurationstatisticaserver.pdf
Runtime(s)	Microsoft .NET Framework 4.6.1 Microsoft Visual C++ Redistribute for Visual Studio 2015-2019
Database (for hosting Enterprise metadata)	Microsoft SQL Server, Oracle, Microsoft SQL Server Express



System requirements are based on an average size implementation.

Important Instructions

- The optional advanced hardware graphics support for transparency requires a graphics card that supports Direct2D.
- For integration with Python use 2.7.11 or 3.5.1. Panda 0.18.1 is also recommended for the extension functions. The comtypes module is required for Python integration.
- For R integration, R 3.6.1 is recommended.
- For H2O integration, H2O 3.10.4.7 and Sparkling Water 2.1.7 are recommended. This runs Spark 2.1.0.
- If you are installing Server components of Statistica, or upgrading a previous version of Server components of Statistica, you must review and install the latest applicable hotfixes. You can find information on how to install the latest hotfixes [here](#).

Preinstallation Checklist for Server Installation

Read Admin Guides

It is a good practice to read the admin guides posted on <https://docs.tibco.com/products/tibco-statistica-all-servers>.

Database

Statistica Server uses a database to store and manage metadata. An empty database must exist prior to starting the installer. The Statistica installer deploys a table schema as part of the installation process. It is a good practice to use SQL Server or Oracle database. If the limitations and performance of SQL Server Express is acceptable, this database can also be used.



If you decide to use SQL Server Express, create an empty database with login information. Retain this information and enter it during the installation.

Amazon RDS for SQL Server and Azure SQL database are also supported. To review the different options for Amazon RDS for Oracle, see [options for Amazon RDS for Oracle](#).

One new database needs to be created per environment (production, test, development). The following information assumes that SQL Server is used.

Complete the following steps.

1. Create empty database that is used during installation for Statistica Enterprise Schema. It can be created on existing SQL Server database. This database should allow for at least 50 MB initial table space.
2. Create a SQL Server user account and make it the owner of Statistica Enterprise Schema. This user account needs permission to create new tables, views and indices.



After the installation, (and for upgrades - a potential schema upgrade on first Statistica startup by Enterprise administrator) the permissions to create new tables, views and indices can be removed from this user account. This user account continues to need read/write permissions on the database for normal operations.

Database Sizing and Location

Statistica Server requires deployment of a metadata database schema on an ODBC compliant database. Most commonly, it is deployed on the existing customer DBMS infrastructure, such as Oracle or SQL Server. SQL Server Express can be used but must be installed manually.

The database sizing requirements vary on usage. The actual metadata describing the Statistica objects is small, but the tablespace can be used to store reports and files (Excel, scripts) within the database (stored as BLOBs), which can increase the overall size.

The Statistica Server and the metadata database should be installed within the same local area network for performance reasons. The location of the data to be analyzed should also be reviewed when deciding where to install Statistica Server and the metadata database. Depending on the situation, customers might decide to install within their data center or at a local office to avoid transporting large amounts of data over a slow network.

Recommended metadata schema database sizing

Requirement	Details
Initial tablespace	1 GB, grow 1 GB intervals
If explicit cap required	100 GB but might need to grow over time
Network Bandwidth	100 MBit/s or faster
Operating system	Microsoft Windows Server 2016 or later

Server (hardware or VM)

1. Server available for Statistica Server software.
 - A typical configuration is to have the operating system and Statistica installed on the C drive. TEMP space on for example, the D drive. Contact <https://support.tibco.com> for help in sizing the TEMP space.
 - Edit the Windows TEMP and TMP environment variables so that the temp folder is located on the secondary (D:) drive.
2. Optional: Workstation Server for Statistica client.

The Statistica workstation software can be installed on employee's desktop computers or laptops.


Some customers prefer creating a Citrix or similar terminal services server that users log into for working with Statistica. This might be preferred because of data security or regulatory compliance.

For more information, see [Statistica hosted desktop](#).

Optional: File Server

Some customers have processes that require the use of a file server. Their data is in text or Excel files. For example, data sets might be published and shared between users on a file share. This file sharing can also be done using Statistica Enterprise database or a workstation server.

Configuration for Statistica Server

1. You must have a login account with administrative access.
2. Verify database client software is installed for SQL Server.
3. Install client software for all DBMS system that data could be extracted from. In other words, if you need to analyze data from Oracle, Access or SAP, you need to install the ODBC or OLE DB drivers.
 - 
 - These client DBMS packages are needed both on the server as well as machines where the workstation client is installed.
 - For 64-bit installations of Statistica the 64-bit versions of the database connectivity software should be installed.
4. Microsoft Internet Information Server (IIS) installed on server (IIS Management Console and IIS Management Service).
5. Microsoft Internet Information Server (IIS) configured on server. Windows Server. Launch **Control Panel > Administrative Tools > Server Manager** and look for the Web Server (IIS) under **Roles**. Select from the following options.
 - Internet Information Services > Web Management Tools > IIS 6 Management Compatibility > IIS Metadatabase and IIS 6 configuration compatibility
 - Internet Information Services > Web Management Tools > IIS 6 Management Compatibility > IIS Management Console
 - Internet Information Services > Web Management Tools > IIS Management Service
 - Internet Information Services > World Wide Web Services > Application Development Features > .NET Extensibility (For Newer version of Windows, .Net Extensibility 3.5 and .Net Extensibility 4.6)
 - Internet Information Services > World Wide Web Services > Application Development Features > ASP.NET (For Newer version of Windows, and ASP.Net 4.6.1)
 - Internet Information Services > World Wide Web Services > Application Development Features > CGI
 - Internet Information Services > World Wide Web Services > Application Development Features > ISAPI Extensions
 - Internet Information Services > World Wide Web Services > Application Development Features > ISAPI Filters
 - Internet Information Services > World Wide Web Services > Security > Request Filtering
 - Internet Information Services > World Wide Web Services > Security > Windows Authentication
6. If required to save documents as Word documents or Excel documents, then installed Microsoft Office 2007 or greater.
7. Optional for preinstallation. This step can also be completed after installation. Create email account for Statistica application. The application sends email notifications.

Configuring Workstation Server or individual workstations

1. If installing workstation on Citrix or VM, use a server login that has administrative access. If logging onto a desktop computer, a login with administrative rights is needed.
2. Verify database client software is installed for SQL Server.
3. Install client software for all DBMS system that data could be extracted from. In other words, if you need to analyze data from Oracle, Access or SAP, you need to install the ADO.NET or ODBC drivers.
4. For 64-bit installations of Statistica, the 64-bit versions of the database connectivity software should be installed.

Installing Statistica Server

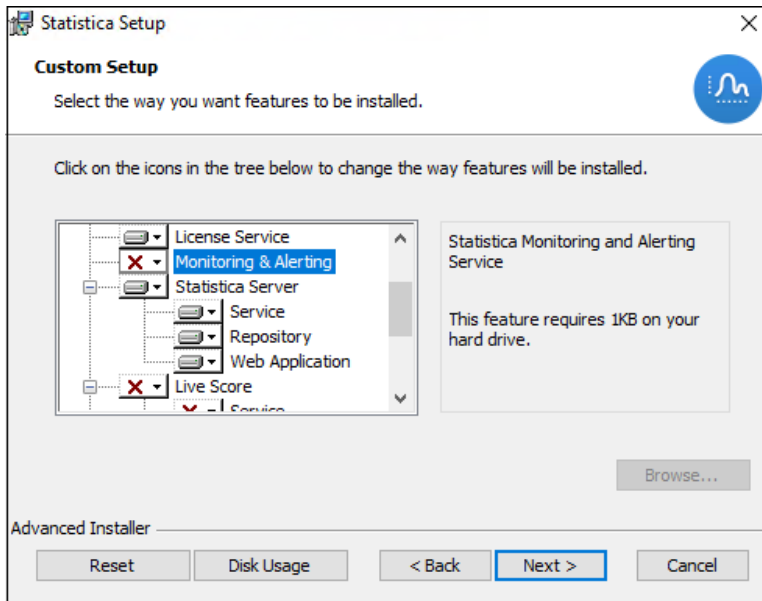
Procedure

1. Visit <https://edelivery.tibco.com> and locate the product. Download the installer and extract the ZIP file to run the installer.
2. Ensure that no other applications are running.
3. Double-click `statistica.exe` to begin the installation process.
4. The Welcome dialog box is displayed. Click the **Next** button.
5. In the Serial Number/Product Key dialog box, you might see fields already filled in. If the Serial Number and Product Key fields are empty, look for `licensing.zip` file that was downloaded from <https://edelivery.tibco.com> and read the `readme.txt` file to locate your keys.

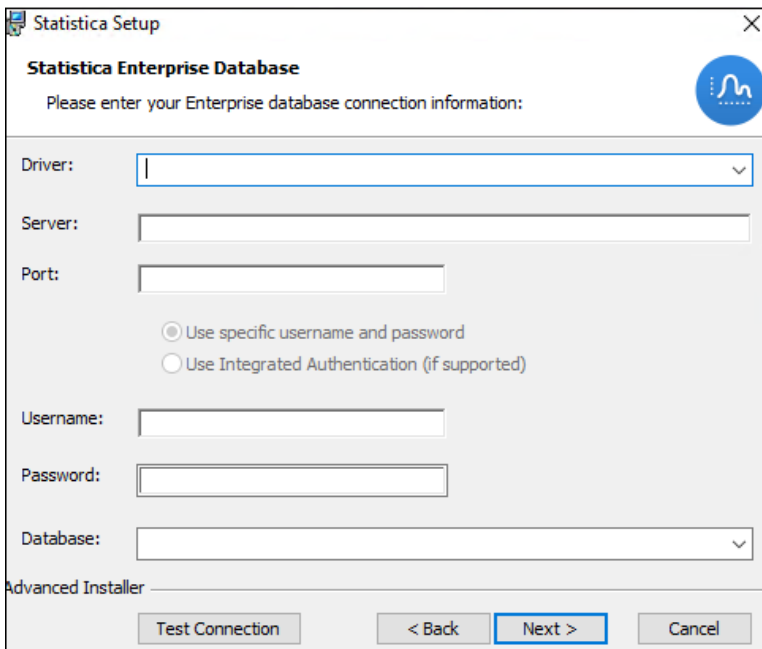


It is important to use the complete keyset as provided by Statistica.

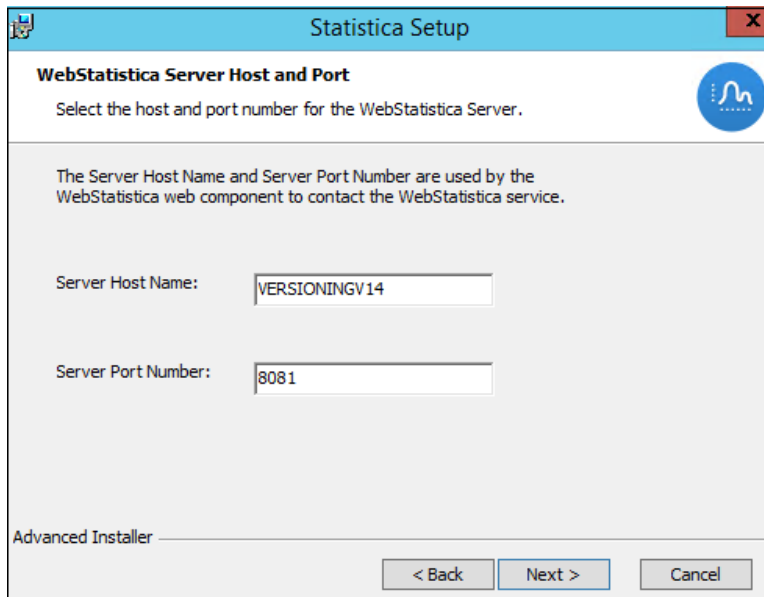
6. Click the **Next** button to continue.
7. In the Install Code dialog box, enter the Install Code. Click the **Next** button to continue. if you do not have an install code (part of the keyset), you do not see this dialog box.
8. In the License Agreement dialog box, read the software license agreement. Select the **I accept the terms in the license agreement** option button, and click the **Next** button if you agree with the terms and want to continue the installation process.
9. In the Setup Type dialog box, if you need to install TIBCO Statistica Live Score Server and/or TIBCO Statistica Monitoring & Alerting Server you must select the **Custom** option. Otherwise select **Typical**.
 - Typical setup installs Statistica with the most common options. This is the recommended selection.
 - Custom setup options are used to install Statistica on another drive or location or to change the program features that are typically installed.
10. If you have questions about the custom installation, contact technical support at <https://support.tibco.com>.
11. Click the **Next** button to continue.
12. In the Custom Setup dialog box you must deselect Live Score and Monitoring and Alerting Service. These products must be installed on a separate server. If you have selected Typical, you do not see this dialog box.



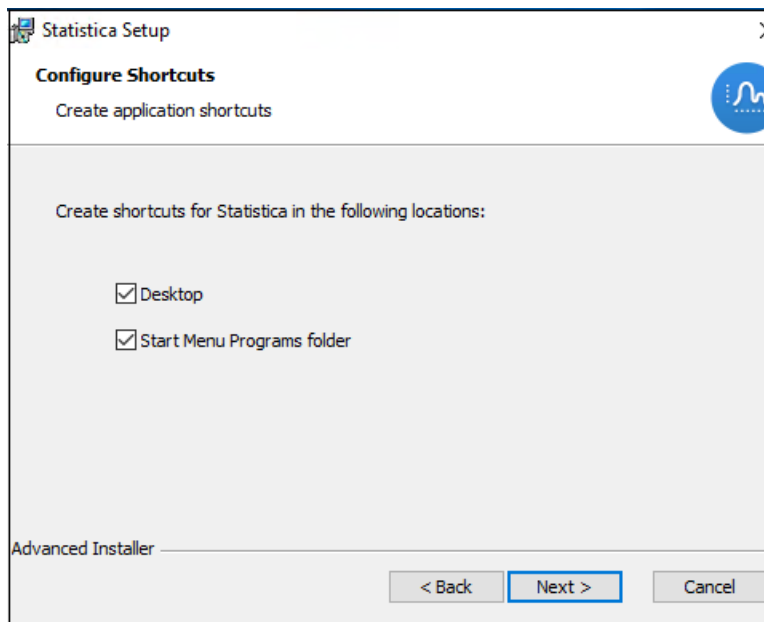
13. To continue, click the **Next** button.
14. In the Enterprise Database Install Type dialog box, choose the type of installation: either create a new database, or use an existing database. Click the **Next** button to continue.
15. Connection Information is displayed in Enterprise Database dialog box.



16. Accept default Server Host Name and Server Port Number or modify this information as needed in the WebStatistica Server Host and Port dialog box. Click **Next**.



17. If you want a Start Menu Programs folder shortcut, check the checkbox. Click the **Next** button to continue.



18. In the Product Registration dialog box, enter the requested information in the appropriate boxes. Click the **Next** button to continue.
19. In the next dialog box, select **Automatic**. Click the **Next** button.
20. Statistica is ready to install. To begin copying files to your machine, click the Install button. This can take several minutes.
21. You might briefly see a DOS command window that states that the web service was started successfully.
22. You should receive a message stating that the installation is complete. If a reboot is required, you might be prompted to reboot now or reboot later, depending on the components that are installed on your machine. If you are prompted, it is necessary to reboot before you run Statistica. Click the **Finish** button to complete the installation process.
23. Create a share to the Statistica executable directory. This share needs to be available to all users who need to run the workstation installation. Users must have read and execute permissions to all files and subfolders.

24. To start using Statistica, double-click the Statistica shortcut, and type in the default login name - admin and password - abcdef. This launches the Statistica program.



You must change this default administrator password using Statistica Enterprise Manager application or disable this account after creating a new administrator account.



If you are installing server components of Statistica (or upgrading a previous version of Server components) of Statistica, you must review and install the latest applicable hotfixes. You can find information on how to install the latest hotfixes [here](#).

Installing Statistica on the Workstation

If a user is accessing Statistica Server only through a browser, no workstation installation is necessary. To install Statistica on the Workstation, follow these instructions.

Prerequisites

Ensure that no other applications are running.

Procedure

1. Locate the share that you created in [Installing Statistica Server Installation](#), step 23, when the Statistica program files were installed on the server. Run `statistica.exe` in Workstation Installer subfolder.
2. The Welcome dialog box is displayed. Click the **Next** button.
3. In the License Agreement dialog box, read the software license agreement. Select the **I accept the terms in the license agreement** option button, and click the **Next** button if you agree with the terms and want to continue the installation process.
4. In the Setup Type dialog box, select either the Typical option button or the Custom option button.
 - Typical setup installs Statistica with the most common options; this is the recommended selection.
 - Custom setup options are not covered in these instructions. If you have questions about the custom installation, contact technical support: <https://support.tibco.com>.
5. To continue, click the **Next** button.
6. In the Start Menu Folder dialog box, enter the Start Menu folder name; the default name is Statistica. If you want to create a desktop shortcut to Statistica, select the check box. Click the **Next** button to continue.
7. Statistica is ready to install on your workstation. To begin copying files to your machine, click the **Install** button.
8. Your system is updated and program files are installed. In the Setup Wizard Completed dialog box, click the **Finish** button.
9. If the workstation's system files need to be updated, you must restart your computer to finish the installation process.
10. To start using Statistica, double-click the Statistica shortcut, and type in the default login name - admin and password - abcdef. After installation, you must change this default administrator password.
11. If you receive any Version Conflict messages, it is recommended that you keep your existing file, click the **Yes** button. These are user preferences.



If you are installing server components of Statistica (or upgrading a previous version of Server components) of Statistica, you must review and install the latest applicable hotfixes. You can find information on how to install the latest hotfixes [here](#).

Uninstalling Statistica Server

To uninstall the Statistica Server, perform the following steps:

Prerequisites

Ensure that no other applications are running.

Procedure

1. In the Control Panel, Programs and Features, scroll down through the list of programs and select Statistica and SDMS. Right-click and select **Uninstall** to uninstall the program.
2. A message is displayed to confirm that you want to uninstall Statistica from your computer. To uninstall the Statistica files, click the **Yes** button.

Uninstalling Statistica Workstation

To uninstall a Statistica workstation, perform the following steps:

Prerequisites

Ensure that no other applications are running.

Procedure

1. In the Control Panel, select **Uninstall a program** located under Programs.
2. Scroll down through the list of programs and select Statistica. To uninstall the program, click **Uninstall**.

User Accounts

Statistica Server validates users based on groups defined on the Statistica Server computer. The following list states the groups:

- SWS_USER
- SWS_DOWNLOADFILES
- SWS_UPLOADDATA
- SWS_UPLOADSCRIPTS
- SWS_BATCHABLE
- SWS_PORTAL
- SWS_PORTALINTERACTIVE
- SWS_ADMIN

The minimum requirement for authentication on the web server is to be a member of the SWS_USER group.

The installation procedure for Statistica Server attempts to automatically create these groups for you. If this was not successful, you can create these groups on the Statistica Server using the Administrative Tools. You can achieve this by opening the Computer Management dialog box from the Control Panel - Administrative Tools menu. Navigate the tree to find Local Users and Groups listed. In the Groups folder, create the groups as listed.

Next, add Users to these Groups. Add all Statistica Server users to the SWS_USER group (Statistica Server administrators as well as Statistica Server users); then add the administrators to the SWS_ADMIN group, and so on. For customers using active directory, a best practice is to define global domain groups that correspond to the Statistica Server groups. Then add the global domain group to the corresponding local groups on the Statistica Server. For example, you can define a global domain group called

GLOBAL_SWS_USER, and add this global domain group to the local SWS_USER created during Statistica Server install. Now you can control users to Statistica Server by using Active Directory tools to add or remove users from the GLOBAL_SWS_USER group.

Accessing the Web Server

If you did not change the destination Web directory during installation, the address is <http://your-server-name/WebStatistica>. Chrome, Firefox Edge, and Internet Explorer browsers are supported.

TIBCO Statistica® Monitoring and Alerting Server

This product is also known as MAS Server.

We recommend that Statistica MAS software be run on a server dedicated to Statistica MAS, independent from any other application software. Users can log onto a web browser to review the generated alerts. Alerts can also be configured to be sent by email.

Minimum hardware requirements

Requirement	Details
Processor	1 GHz
Memory	8 GB RAM
Hard disk space for installation	10 GB
Minimum Scratch/Temporary Disk Space	50 GB or more
Network Bandwidth	100 MBits/s or faster
Operating System	Microsoft Windows Server 2016 or later

Recommended hardware requirements

Requirement	Details
Processor	2.0 GHz, 64-bit, quad core or more
Memory	16 GB RAM
Hard disk space for installation	10 GB
Minimum Scratch/Temporary Disk Space	100 GB or more
Network Bandwidth	100 MBits/s or faster
Operating System	Microsoft Windows Server 2019



The Statistica Monitoring and Alerting Server (MAS) is part of the Statistica Server platform. Installation of the Statistica Server Application Server must occur prior to the installation of the MAS Server.

Preinstallation Checklist for MAS Server Installation

Configuration for MAS Server

1. Have a login account with administrative access.
2. These installation instructions assume that an installation of Statistica Server already exist on another server. If Statistica Server has not been installed, then we need to install it. The MAS Server depends on the existence of this software.

Important Instructions

- The optional advanced hardware graphics support for transparency requires a graphics card that supports Direct2D.
- For integration with Python use 2.7.11 or 3.5.1. Panda 0.18.1 is also recommended for the extension functions. The comtypes module is required for Python integration.
- For R integration, R 3.6.1 is recommended.
- For H2O integration, H2O 3.10.4.7 and Sparkling Water 2.1.7 are recommended. This runs Spark 2.1.0.
- If you are installing server components of Statistica (or upgrading a previous version of Server components) of Statistica, you must review and install the latest applicable hotfixes. You can find information on how to install the latest hotfixes [here](#).

Installing MAS Server Installation

Prerequisites

Ensure that no other applications are running.

Procedure

1. The installer used for Statistica Server installation is also used for the MAS Server installation. Run `statistica.exe` to begin the installation process.
2. The **Welcome** dialog box is displayed. Click the **Next** button.
3. In the Serial Number/Product Key dialog box, you might see fields already filled in. If the Serial Number and Product Key fields are empty, look for licensing.zip file that was downloaded from <https://edelivery.tibco.com> and read the readme.txt file to locate your keys. Click the **Next** button to continue.
4. If an Install Code was provided, you can see the Install Code dialog box. Enter the Install Code. Click the **Next** button to continue.
5. In the License Agreement dialog box, read the software license agreement. Select the **I accept the terms in the license agreement** option button, and click the **Next** button if you agree with the terms and want to continue the installation process.
6. Select a **Custom** install type. You might receive a message regarding WebStatistica. Ignore this message.
7. Deselect the License Manager, WebStatistica, Workstation Installer, Web Data Entry, and Multimedia features.
8. When prompted for the location of the `ClientStat.tmp` file, enter the shared directory location of the FlexLM license file on the Statistica Server.
9. In the Enterprise Database Install Type dialog box, choose the type of installation: use an existing database. This is the database that was created during the Statistica Server installation. Click the **Next** button to continue.
10. Enter the database connection information. Click **Test Connection** to verify it.
11. Select **Yes** when prompted to install the Concurrent Session Manager.
12. In the Start Menu Folder dialog box, enter the Start Menu folder name; the default name is Statistica.
13. If you want to create a desktop shortcut to Statistica, select the check box. Click the **Next** button to continue.
14. Click the **Install** button to begin the installation.
15. Your system is updated and program files are installed. Click the **Finish** button in the Setup Wizard Completed dialog box.

If you are installing server components of Statistica (or upgrading a previous version of Server components) of Statistica, you must review and install the latest applicable hotfixes. You can find information on how to install the latest hotfixes [here](#).

Uninstalling MAS Server Installation

To uninstall the Statistica MAS Server, perform the following steps:

Prerequisites

Ensure that no other applications are running.

Procedure

1. From the Control Panel, select Programs and Features and scroll down through the list of programs and select Statistica. Click **Uninstall**.
2. A message is displayed to confirm that you want to uninstall Statistica from your computer. Click the **Yes** button, and Statistica files are uninstalled.

TIBCO Statistica® Live Score Server

This product is also known as Live Score.

The TIBCO Statistica Live Score Server is the analytic engine that receives and executes the Web Service (SOAP) scoring calls for Statistica Live Score. The analytic projects that the server executes are stored in the Statistica Enterprise metadata database.

We recommend that Statistica Live Score software be run on a server dedicated to Statistica Live Score, independent from any other application software. This is a transaction server with an API. It does not have a user interface.

Minimum hardware requirements

Requirement	Details
Processor	1 GHz
Memory	8 GB RAM
Hard disk space for installation	10 GB
Minimum Scratch/Temporary Disk Space	50 GB or more
Network Bandwidth	100 Mbits/s or faster
Operating System	Microsoft Windows Server 2016 or later

Recommended hardware requirements

Requirement	Details
Processor	2.0 GHz, 64-bit, quad core or more
Memory	8 GB RAM
Hard disk space for installation	10 GB
Minimum Scratch/Temporary Disk Space	100 GB or more
Network Bandwidth	100 Mbits/s or faster
Operating System	Microsoft Windows Server 2019



System Requirements are based on an average size implementation. Statistica Live Score applications often benefit from additional cores, depending on how many simultaneous requests are expected.

The Statistica Live Score is part of the Statistica Server platform. Installation of the Statistica Server Application Server must occur prior to the installation of the Live Score Server.

Preinstallation Checklist for Live Score Server Installation

Configuration for Live Score Server

- These installation instructions assume that an installation of Statistica Server already exists on another server. If Statistica Server has not been installed, then we need to install it. Live Score depends on the existence of this software.



Live Score and Statistica Server (WebStatistica) components cannot be installed on the same server.

- The location of the FlexLM license file on the Statistica Server must be shared and be accessible to the machine on which the Live Score Server installation is performed.
- The server must be installed to a Windows Server 2016 operating system or later. Installations on Windows 10 are for training or sandbox environments.
- Have login account with administrative access for Live Score server.

You must install Microsoft Internet Information Services (IIS) component on that computer before beginning the installation procedure.

Windows 10

From **Control Panel > Programs > Programs and Features > Turn Windows** features on or off, select the following features under Internet Information Services. From Web Management Tools, select IIS Management Console. From Common HTTP Features, select Static Content. From World Wide Web Services, Application Development Features, select ASP.NET, CGI, ISAPI Extensions. From Security, select Windows Authentication.

Windows Server: From the Server Manager console, select **Roles > Web Server (IIS)**, and then right-click to select **Add Role Services**. Select Web Server (Installed). From Application Development, select ASP.NET, CGI, and ISAPI Extensions. From Security, select Windows Authentication. From Common HTTP Features, select Static Content.

The Statistica installation process creates firewall exceptions. The following program and ports are added to the firewall exception list.

- Name: WebStatistica Service (also known as Statistica Server) Port: 8081
Protocol: TCP

Important Instructions

- The optional advanced hardware graphics support for transparency requires a graphics card that supports Direct2D.
- For integration with Python use 2.7.11 or 3.5.1. Panda 0.18.1 is also recommended for the extension functions. The comtypes module is required for Python integration.
- For R integration, R 3.6.1 is recommended.
- For H2O integration, H2O 3.10.4.7 and Sparkling Water 2.1.7 are recommended. This runs Spark 2.1.0.
- If you are installing server components of Statistica (or upgrading a previous version of Server components) of Statistica, you must review and install the latest applicable hotfixes. You can find information on how to install the latest hotfixes [here](#).

Installing Live Score Server

Prerequisites

Ensure that no other applications are running.

Procedure

1. The installer used for Statistica Server installation is also used for the Statistica Live Score Server installation. This installer can be downloaded from <https://support.tibco.com> again.
2. Run `statistica.exe` to begin the installation process.
3. The Welcome dialog box is displayed. Click the **Next** button.
4. In the Serial Number/Product Key dialog box, you might see fields already filled in. If the Serial Number and Product Key fields are empty, look for `licensing.zip` file that was downloaded from <https://edelivery.tibco.com> and read the `readme.txt` file to locate your keys. Click the **Next** button to continue.
5. If an Install Code was provided, you can see the **Install Code** dialog box. Enter the Install Code. Click the **Next** button to continue.
6. In the License Agreement dialog box, read the software license agreement. Select the **I accept the terms in the license agreement** option button, and click the **Next** button if you agree with the terms and want to continue the installation process.
7. In the Setup Type dialog box, select the **Custom** option button. Typical setup installs Statistica with the most common options. However, for Live Score, de-select every option except the Statistica option and the Live Score option. If WebStatistica was purchased, the components for it are automatically included to install and Live Score is automatically deselected.
8. Click the drop down arrow next to the WebStatistica component and select **This feature will not be available**.
9. Then click the drop down arrow next to Live Score and select **This feature, and all sub-features, will be installed on a local hard drive**. If you have questions about the custom installation, contact technical support at <https://support.tibco.com>.
10. Click the **Next** button to continue.
11. In the Enterprise Database Install Type dialog box, choose the type of installation: use an existing database. This is the database that was created during the Statistica Server installation. Click the **Next** button to continue.
12. Enter the database connection information. Click **Test Connection** to verify the information.
13. Select **Yes** when prompted to install the Concurrent Session Manager.
14. Statistica is ready to install. To begin copying files to your machine, click the **Install** button. This might take several minutes.
15. You see a DOS command window briefly that states that the web service was started successfully.
16. You receive a message stating that the installation is complete. If a reboot is required, you might be prompted to reboot now or reboot later, depending on the components that are installed on your machine. If you are prompted, it is necessary to reboot before you run Statistica. Click the **Finish** button to complete the installation process.

If you are installing server components of Statistica (or upgrading a previous version of Server components) of Statistica, you must review and install the latest applicable hotfixes. You can find information on how to install the latest hotfixes [here](#).

Uninstalling Live Score Server

To uninstall Statistica Live Score, perform the following steps:

Prerequisites

Ensure that no other applications are running.

Procedure

1. Open **Programs and Features** and scroll down through the list of programs and select Statistica. Right-click and select **Uninstall**.
2. A message is displayed to confirm that you want to uninstall Statistica from your computer. Click the **Yes** button to uninstall Statistica files.

TIBCO Statistica® Data Entry Server

The Statistica Data Entry Server is part of the TIBCO Statistica Server platform. You must install Statistica Server Application Server before installing Statistica Data Entry Server. If you have more than 15 users, consider running TIBCO Statistica Data Entry Server on a dedicated server, independent from any other application software.

The hardware and software requirements for installing Data Entry Server are as follows:

Minimum hardware and software requirements

Requirement	Details
Processor	1 GHz
Memory	8 GB RAM
Hard disk space for installation	10 GB
Minimum Scratch/Temporary Disk Space	50 GB or more
Network Bandwidth	100 MBits/s or faster
Operating System	Microsoft Windows Server 2016 or later

Recommended hardware and software requirements

Requirement	Details
Processor	2.0 GHz, 64-bit, quad core or more
Memory	16 GB RAM
Hard disk space for installation	10 GB
Minimum Scratch/Temporary Disk Space	100 GB or more
Network Bandwidth	100 MBits/s or faster
Operating System	Microsoft Windows Server 2019

Preinstallation Checklist for Data Entry Server Installation

Configuration Requirement for Data Entry Server

- You must have a login account with administrative access.
- TIBCO Statistica Server must be installed on another server.

For more information, see [Preinstallation Checklist for Statistica Server](#).

Additional Requirements

- If you want to opt for advanced hardware graphics for transparency, you must have a graphics card that supports Direct2D.
- For Python integration, use Python 2.7.11 or 3.5.1. Panda 0.18.1 is also recommended for the extension functions. The comtypes module is required for Python integration.
- For R integration, R 3.6.1 is recommended.
- For H2O integration, H2O 3.10.4.7 and Sparkling Water 2.1.7 are recommended. This runs Spark 2.1.0.
- If you are installing server components of Statistica (or upgrading a previous version of Server components) of Statistica, you must review and install the latest applicable hotfixes. You can find information on how to install the latest hotfixes [here](#).

Installing Data Entry Server

Prerequisites

Ensure that no other applications are running.

Procedure

1. The installer used for Statistica Server installation is also used for the Data Entry Server installation. Run `statistica.exe` to begin the installation process.
2. The **Prerequisites** dialog box is displayed. It prompts for the prerequisites to be installed. Click the **Next** button.
3. In the Serial Number/Product Key dialog box, you might see fields already filled in. If the Serial Number and Product Key fields are empty, look for licensing.zip file that was downloaded from <https://edelivery.tibco.com> and read the readme.txt file to locate your keys. Click the **Next** button to continue.
4. In the License Agreement dialog box, read the software license agreement. Select the **I accept the terms in the license agreement** option button, and click the **Next** button if you agree with the terms and want to continue the installation process.
5. In the Setup Type dialog box, select the **Custom** option button. Typical setup installs Statistica with the most common options. However, for Data Entry, de-select every option except the Statistica option and the Data Entry option.
6. Click the drop down arrow next to **Statistica** and **Data Entry** and select This feature, and all sub-features, will be installed on a local hard drive.
7. Browse for the Client licensing file (`ClientStat.tmp`) present on the Licensing server. This is prompted only when the Licensing service is present on another server. Click the **Next** button.
8. The Enterprise Database Connection dialog box is displayed. If the database is already present, select **Connect to an existing Enterprise database** option.
9. The Statistica Enterprise Database dialog box is displayed. Enter details such as Driver, Server, Port, Username, Password, Database. Click **Next**.
10. To create shortcuts, click **Next** on Configure Shortcuts dialog box.
11. Statistica is ready to install. To begin copying files to your machine, click the **Install** button. This might take several minutes.
12. You receive a message stating that the installation is complete. If a reboot is required, you might be prompted to reboot now or reboot later, depending on the components that are installed on your machine. If you are prompted, it is necessary to reboot before you run Statistica. Click the Finish button to complete the installation process.

If you are installing server components of Statistica (or upgrading a previous version of Server components) of Statistica, you must review and install the latest applicable hotfixes. You can find information on how to install the latest hotfixes [here](#).

Uninstalling Data Entry Server

Prerequisites

Ensure that no other applications are running.

Procedure

1. Open **Programs and Features** and scroll down through the list of programs and select **Statistica**.
2. Right-click and select **Uninstall**.
3. Confirm uninstallation when prompted. All Statistica files are uninstalled.

Silent Installer

The Statistica Installer supports silent or unattended installation using many of the [supported MSI command line options](#), along with custom properties specific to the Statistica installation. Silent installations require admin rights and must be launched through “statistica.exe” (not “Statistica.msi”).

The format of the command line is as follows:

```
<Path to statistica.exe> <PROPERTYNAME>=<Property Value>
<PROPERTYNAME>=<Property Value> ... /L<Log File Options>
<Path to Log File> /q<Silent Install Flag Options>
```

For example:

```
"C:\users\vm\desktop\Install64\statistica.exe" SERIALNUMBER="XXXXXXXXXXXXXXXXXXXX-X"
PRODUCTKEY="XXXXX-XXXX-XXXX-XXXXX-XXXXX"
FIRSTNAME="John" LASTNAME="Doe" B_PERSONALUSE="0" COMPANY="MyCompany"
JOBTITLE="Developer" PHONENUMBER="555-1234" EMAIL1="jdoe@tibco.com"
EMAIL2="jdoe@tibco.com" REGMETHOD="Manual" CLIENTSTATPATH="C:\users\vm\desktop
\ClientStat.tmp" FLEX_SERVER_PORT="26999"
FLEX_CLIENT_PORT="26998" WEBSTATPORT="8081" B_NEW_DATABASE="0"
DB_CONNECTION_STRING="Driver
={ ODBC Driver 17 for SQL
Server};Server=MyServer.MyCompany.Com;PORT=;Uid=sa;Pwd=MyPassword;database=MyDatabase"
/L*V " C:\users\vm\desktop\Install64\log.txt" /qn
```

This list of custom properties specific to the Statistica installer is as follows:

- SERIALNUMBER
- PRODUCTKEY
- FIRSTNAME
- LASTNAME
- B_PERSONALISE
- COMPANY
- JOBTITLE
- PHONENUMBER
- EMAIL1 (EMAIL1 and EMAIL2 must be the same)
- EMAIL2 (EMAIL1 and EMAIL2 must be the same)
- REGMETHOD - "Manual", "Auto" - The type of registration to perform during install.
- CLIENTSTATPATH – “<Path to ClientStat.tmp>”: When performing a server installation without the licensing server on the same machine, you must point to the ClientStat.tmp file on the licensing server. The ClientStat.tmp file is in the “Licensing” subfolder of the main installation directory.
- FLEX_SERVER_PORT – <Port Number>: Port for the licensing service to use.
- FLEX_CLIENT_PORT – <Port Number>: Port for the licensing service to use.
- WEBSTATPORT – <Port Number>: Port for Statistica Server to use
- B_NEW_DATABASE – “0”, “1” : Set the value to “0” to connect to an existing Statistica Enterprise database. Set the value to “1” to create a new Statistica Enterprise database (requires an empty SQL/Oracle database).
- DB_CONNECTION_STRING - <Standard ODBC connection string>: A standard ODBC connection string representing the connection to the SQL/Oracle database you are connection to.

List of standard supported command line options:

- All logging options using “/L”

- All silent install option using `"/q"`
- ADDLOCAL – A comma delimited list of the features you want to install. It's only necessary to define this property if you don't want to perform a "typical" install. "StatisticaServer" and "LiveScore" cannot be installed together. Also, the "Statistica" feature is required for all other features except "LicenseService". The list of features are:
 - Statistica
 - Help
 - Examples
 - PDF
 - LicenseService
 - MAS
 - StatisticaServer
 - LiveScore
 - WebDataEntry
 - WorkstationInstaller
 - EnterpriseODataService
 - ALL - includes all the above features

Upgrading TIBCO Statistica Server

The installer upgrades only the server component of a network installation. After the server upgrade, workstations or clients are upgraded from the server.

There are two different upgrade paths you can follow for upgrading Statistica Server:

- [SDMS Installed](#)
- [SDMS Not Installed](#)

Upgrading When SDMS Is Installed

Some issues related to the migration tool are fixed since the initial release of Statistica 14.0. The latest version of the migration tool is available with the latest hotfix distribution. You must use the latest version [here](#) rather than the version available with your Statistica installer download from [TIBCO eDelivery](#).



You must login to the [support portal](#) for downloading the hotfix.

Upgrading Statistica Server with SDMS Server installed involves the following broad steps:

- Migrate the database.
- Uninstall Statistica 13.5 or previous versions.
- Install Statistica 14.0.

For more information, see [Upgrading Statistica Server](#).

To use Statistica during the migration process, you must extract the contents from the latest version of the Statistica.Portable-14.0.0.zip file to a known location on the SDMS Server.

This portable distribution tool must be run on the SDMS Server. After this, perform the steps defined at [Migrating Database](#).



Portable Distribution is provided so that you can still use Statistica during the migration of database. You can continue to use previous version of Statistica along with the parallel installation of portable zip file on SDMS Server.



If you are installing server components of Statistica (or upgrading a previous version of Server components) of Statistica, you must review and install the latest applicable hotfixes. You can find information on how to install the latest hotfixes [here](#).

Migrating Database

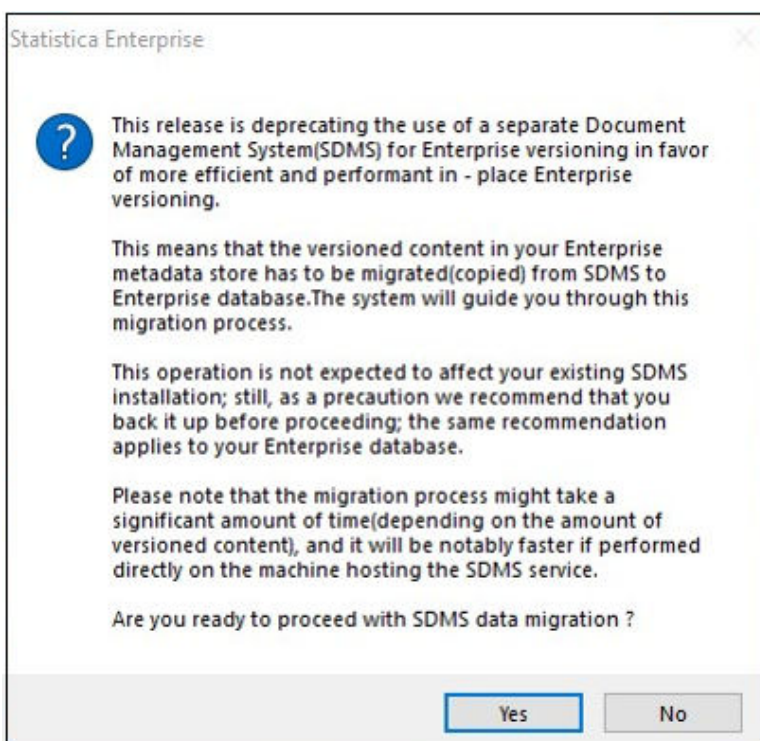
During this phase you can resolve any errors you come across and confirm that the data can be transferred from the SDMS Database to the Enterprise Database. You can use Statistica with the help of Portable Distribution during this process.

Prerequisites

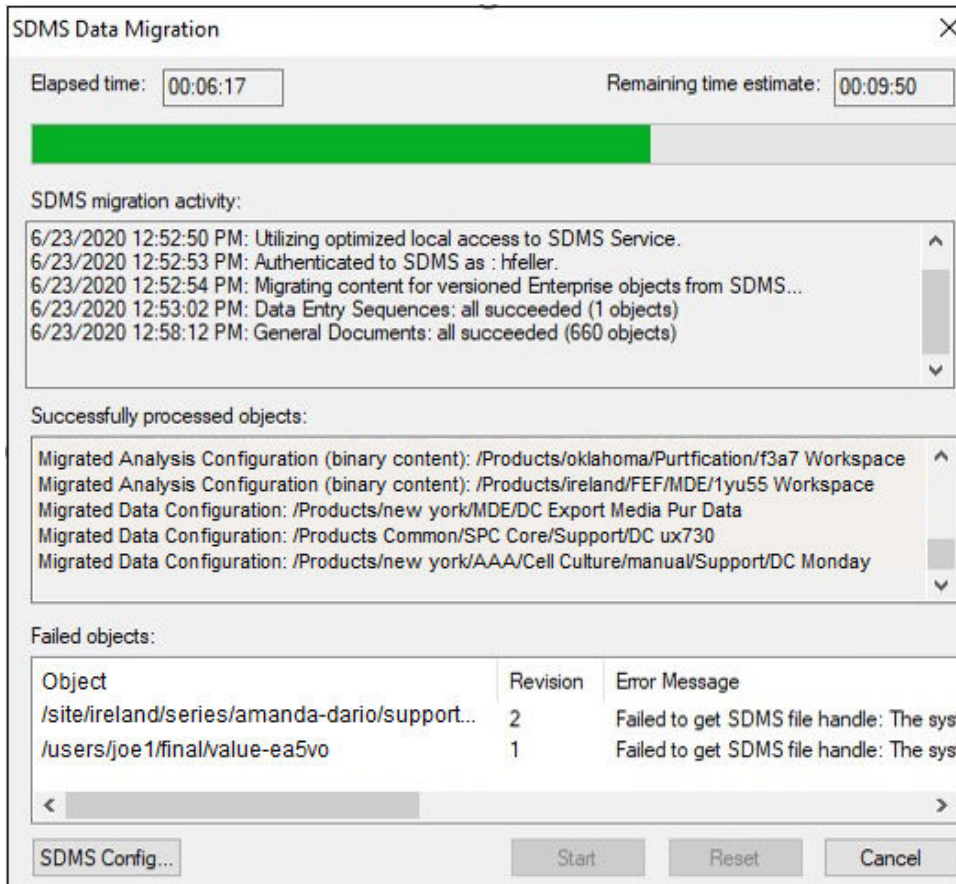
- You must take a backup of the database (commonly named SEWSS or Enterprise) before starting the migration process.
- You must run the Portable Distribution tool on the SDMS server (admin credentials are required). If you have multiple SDMS servers and Statistica Enterprise databases for different environments, you must run this tool on the SDMS server which corresponds to the Statistica Enterprise Database which you are migrating.
- You must ensure that the database size is sufficient to accommodate all objects and documents currently stored in SDMS. For more information about correctly sizing your database, see [Extend table when migrating SDMS data](#).

Procedure

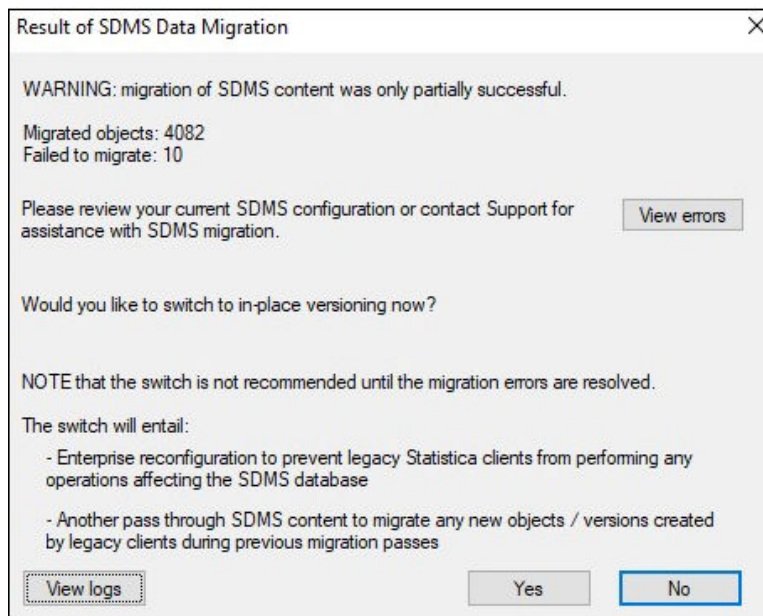
1. Download the latest version of the Portable Distribution tool as described in prerequisites.
2. Extract the .zip file to a directory on the SDMS server.
If Statistica is not installed on the SDMS server, copy the `stat.lic` and `config.lic` files from your Statistica Server to the same directory where you have extracted the Portable Distribution. These files are located in the Statistica installation directory on the Statistica Server, and need to be in the same directory as `statist.exe`. Also, you must create an ODBC Data Source for the Enterprise Database on the SDMS server, so that the portable distribution can connect to the database. You can do this in the Windows "ODBC Data Sources (64-bit)" Administrative tool. Create a system DSN matching with the one on your Statistica Server.
3. Run `statist.exe` from the directory where the Portable Distribution tool was unzipped to begin the migration and upgrade process.
4. Confirm all actions when prompted.



5. To start Data Migration, in SDMS Data Migration dialog box, click **Start**.



After the migration process starts, the Result of SDMS Data Migration dialog box is displayed. It displays the number of **Migrated objects** and **Failed to migrate** objects. You can view errors and logs by clicking **View errors** and **View Logs**. The **View errors** button is active only if there are errors during migration.



To reverse all migration changes performed till now, click **No**, return to the previous page, and click **Reset**.

Log files are not overwritten. To add new versions of things at a later stage, you can run migration tool again to this point as many times as needed before scheduling the outage. It checks for the changes that are already made earlier and skips them. It only migrates the new ones. To troubleshoot errors during migration, see [Resolve errors for Migration](#). Once you follow the steps in the KB article to resolve the errors and you still continue to see these errors you can open a support case to review your upgrade plan with support.

What to do next

Refer [Finalizing Database Migration](#).

Finalizing Database Migration

You are ready to finalize the database migration after you have completed steps in [Migrating Database](#). To finalize the Database migration you are prompted to Activate in-place versioning. Activating in-place versioning completes the Database migration process. You cannot access Statistica during in-place versioning. Perform these steps when you are ready to switch to the new version of Statistica.

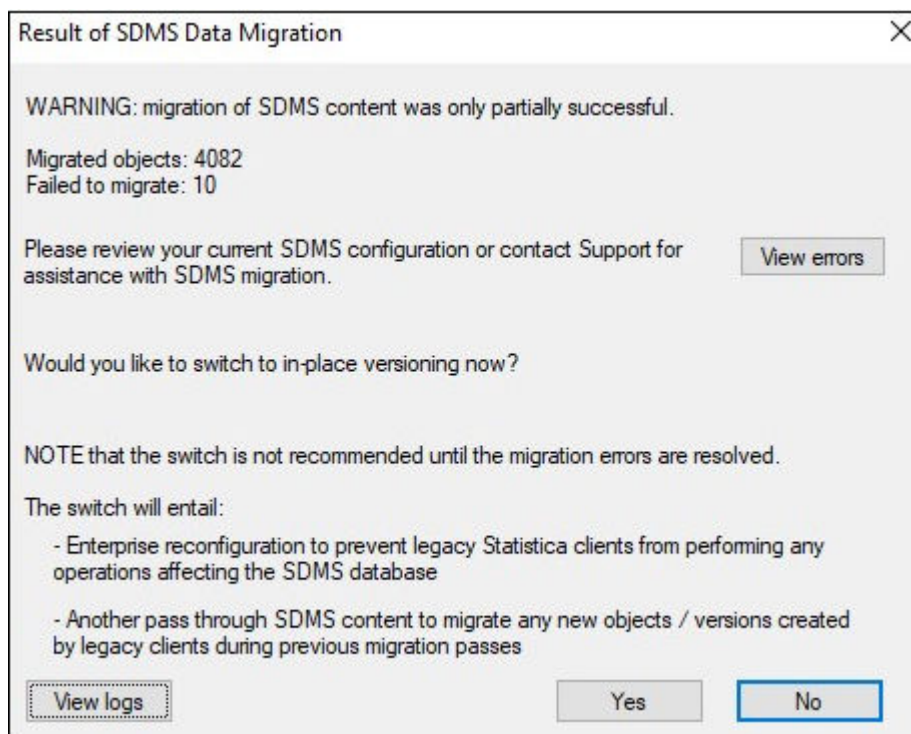
Prerequisites



Before you perform the following steps you must plan and schedule an outage.

Procedure

1. You must be ready for an outage at this step. To activate in-place versioning when migration is complete, click **Yes**.



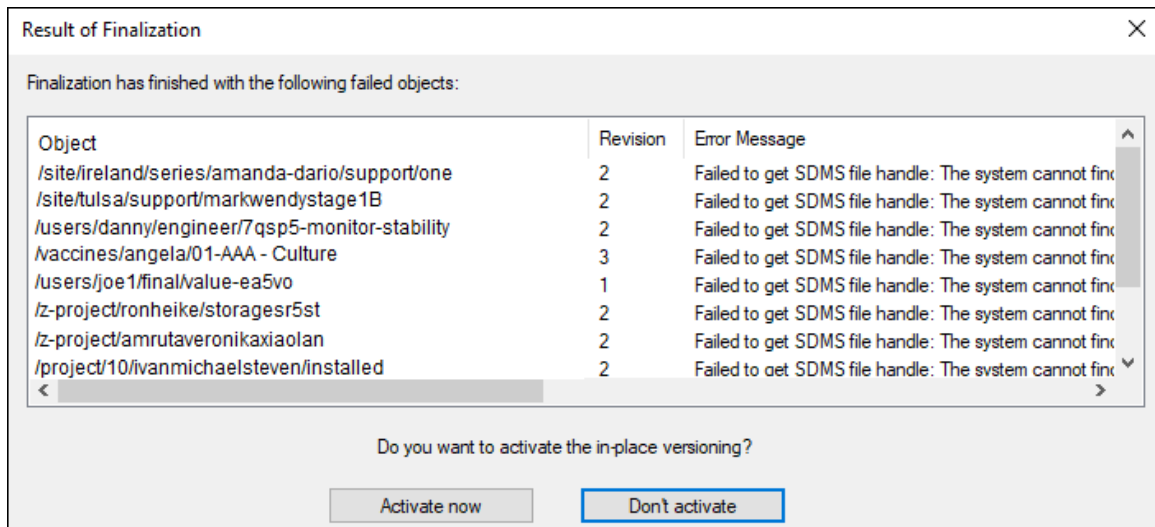
2. For Finalizing Database Migration, a confirmation dialog box is displayed. To proceed, click **Yes**.
3. SDMS Data Migration dialog box is displayed. Versioning is added to unversioned objects such as Labels, Characteristics, Tasksets, and Alarm Dashboards. If you click **Yes**, then you are ready for in-place versioning.



Result of Finalization dialog box is displayed in **Step 4** only when in-place versioning is activated and there are still outstanding errors. It displays the unresolved errors and their details. You can still continue with unresolved errors.

If there are no errors then Result of Finalization dialog box is not displayed and you can move directly to **Step 5**.

- To Finalize, click **Activate now**.



- Once in-place versioning is activated and migration is complete, a confirmation message is displayed. Click **OK**.
- To exit the Database Migration, click **Close** and then **Yes**.
- Result of Database migration is displayed. Click **Close** on the **Database update was successful** dialog box.

Upgrading Statistica Server

For upgrading the Statistica server, uninstall previous versions of Statistica after successful migration of the database and run the Statistica 14.0 installer.



All server installations such as Statistica, Statistica Workstations, Data Entry, WebStatistica, MAS, and Live Score must be upgraded to work with Statistica 14.0. If you are using the same server for Statistica 14.0 as for the existing installation, you must uninstall the previous version before installing Statistica 14.0.



- SDMS is not used after the data migration process is completed for existing installations.
- You must keep the SDMS server archived (keep it installed or at least retain its documents on disk) for some time, as a general precaution (as a backup of the original versioning data).

Prerequisites

- Locate the License file (stat.lic) using these [steps](#), and copy the license file in a safe location to use as a reference.
- You must back up or save the IIS settings for Statistica Data Entry Server to another location. The default location for web.config file is C:\WebStatisticaPub\DataEntry. This must be done since the web.config is removed by the uninstall process. After installation the old web.config settings must be applied manually to the new web.config file. By default the Statistica Data Entry Server software is installed on the same computer with Statistica Server. If a custom install was completed, then Statistica Server and Statistica Data Entry Server are on separate computers.

Perform the steps in the following order:

Procedure

1. Uninstall [Statistica Server](#).
2. If [Statistica Monitoring & Alerting Server](#), [Statistica Live Score Server](#) and [Statistica Data Entry Server](#) are on separate machines, then uninstall all these servers.
3. Uninstall [Statistica Workstation](#).
4. Install [Statistica Server](#).
5. Install [Statistica on the Workstation](#).
6. If [Statistica Monitoring & Alerting Server](#), [Statistica Live Score Server](#) and/or [Statistica Data Entry Server](#) are on separate machines, then run install for these products.

Upgrading When SDMS Is Not Installed

Follow the steps to upgrade the Enterprise Server where SDMS is not installed.

Prerequisites

- Locate the License file (stat.lic) using these [steps](#), and copy the license file in a safe location to use as a reference.
- You must back up or save the IIS settings for Statistica Data Entry Server to another location. The default location for web.config file is C:\WebStatisticaPub\DataEntry. This must be done since the web.config is removed by the uninstall process. After installation the old web.config settings must be applied manually to the new web.config file. By default the Statistica Data Entry Server software is installed on the same computer with Statistica Server. If a custom install was completed, then Statistica Server and Statistica Data Entry Server are on separate computers.

Perform the steps in the following order:

Procedure

1. Uninstall [Statistica Server](#).
2. If [Statistica Monitoring & Alerting Server](#), [Statistica Live Score Server](#) and/or [Statistica Data Entry Server](#) are on separate machines, then uninstall all these servers.
3. Uninstall [Statistica Workstation](#).
4. Install [Statistica Server](#).
5. Install [Statistica on the Workstation](#).
6. If [Statistica Monitoring & Alerting Server](#), [Statistica Live Score Server](#) and [Statistica Data Entry Server](#) are on separate machines, then run install for these products.

TIBCO Documentation and Support Services

How to Access TIBCO Documentation

Documentation for TIBCO products is available on the [TIBCO Product Documentation](#) website, mainly in HTML and PDF formats.

The website is updated frequently and is more current than any other documentation included with the product.

Product-Specific Documentation

The following documentation for this product is available on the [TIBCO Statistica® Product Documentation](#) page.

- *TIBCO Statistica® Release Notes*
- *TIBCO Statistica® Installation*
- *TIBCO Statistica® Quick Reference*
- *TIBCO Statistica® Product Traceability*
- *TIBCO Statistica® Configuration for Windows Server 2019*
- *TIBCO Statistica® Data Entry Administration*
- *TIBCO Statistica® Server Administrator's Guide*
- *TIBCO Statistica® Options Configuration*
- *TIBCO Statistica® R Integration: Features and Options*
- *TIBCO Statistica® Security Guide*
- *TIBCO Statistica® User's Guide*
- *TIBCO Statistica® Enterprise Manager Guide*
- *TIBCO Statistica® Statistica Object Model Guide*
- *TIBCO Statistica® Logistic Regression Formula Guide*
- *TIBCO Statistica® Stability Analysis Formula Guide*
- *TIBCO Statistica® Stepwise Model Builder Formula Guide*
- *TIBCO Statistica® Weight of Evidence Formula Guide*

The following documents for TIBCO® Data Science for TIBCO Spotfire® Analyst can be found on the [TIBCO Documentation site](#):

- *TIBCO® Data Science for TIBCO Spotfire® Analyst Release Notes*
- *TIBCO® Data Science for TIBCO Spotfire® Analyst User Guide*

The following documents for TIBCO® Data Science Service for TIBCO Spotfire® can be found on the [TIBCO Documentation site](#):

- *TIBCO® Data Science Service for TIBCO Spotfire® Release Notes*
- *TIBCO® Data Science Service for TIBCO Spotfire® Installation and Configuration Guide*
- *TIBCO® Data Science Service for TIBCO Spotfire® User Guide*

How to Contact TIBCO Support

Get an overview of [TIBCO Support](#). You can contact TIBCO Support in the following ways:

- For accessing the Support Knowledge Base and getting personalized content about products you are interested in, visit the [TIBCO Support](#) website.
- For creating a Support case, you must have a valid maintenance or support contract with TIBCO. You also need a user name and password to log in to [TIBCO Support](#) website. If you do not have a user name, you can request one by clicking **Register** on the website.

How to Join TIBCO Community

TIBCO Community is the official channel for TIBCO customers, partners, and employee subject matter experts to share and access their collective experience. TIBCO Community offers access to Q&A forums, product wikis, and best practices. It also offers access to extensions, adapters, solution accelerators, and tools that extend and enable customers to gain full value from TIBCO products. In addition, users can submit and vote on feature requests from within the [TIBCO Ideas Portal](#). For a free registration, go to [TIBCO Community](#).

Legal and Third-Party Notices

SOME TIBCO SOFTWARE EMBEDS OR BUNDLES OTHER TIBCO SOFTWARE. USE OF SUCH EMBEDDED OR BUNDLED TIBCO SOFTWARE IS SOLELY TO ENABLE THE FUNCTIONALITY (OR PROVIDE LIMITED ADD-ON FUNCTIONALITY) OF THE LICENSED TIBCO SOFTWARE. THE EMBEDDED OR BUNDLED SOFTWARE IS NOT LICENSED TO BE USED OR ACCESSED BY ANY OTHER TIBCO SOFTWARE OR FOR ANY OTHER PURPOSE.

USE OF TIBCO SOFTWARE AND THIS DOCUMENT IS SUBJECT TO THE TERMS AND CONDITIONS OF A LICENSE AGREEMENT FOUND IN EITHER A SEPARATELY EXECUTED SOFTWARE LICENSE AGREEMENT, OR, IF THERE IS NO SUCH SEPARATE AGREEMENT, THE CLICKWRAP END USER LICENSE AGREEMENT WHICH IS DISPLAYED DURING DOWNLOAD OR INSTALLATION OF THE SOFTWARE (AND WHICH IS DUPLICATED IN THE LICENSE FILE) OR IF THERE IS NO SUCH SOFTWARE LICENSE AGREEMENT OR CLICKWRAP END USER LICENSE AGREEMENT, THE LICENSE(S) LOCATED IN THE "LICENSE" FILE(S) OF THE SOFTWARE. USE OF THIS DOCUMENT IS SUBJECT TO THOSE TERMS AND CONDITIONS, AND YOUR USE HEREOF SHALL CONSTITUTE ACCEPTANCE OF AND AN AGREEMENT TO BE BOUND BY THE SAME.

This document is subject to U.S. and international copyright laws and treaties. No part of this document may be reproduced in any form without the written authorization of TIBCO Software Inc.

TIBCO, the TIBCO logo, the TIBCO O logo, Statistica, Spotfire, Process Tree Viewer, Process Data Explorer, Predictive Claims Flow, Making the World More Productive, Live Score, Electronic Statistics Textbook, Decisioning Platform, Data Health Check, and Better Decisioning are either registered trademarks or trademarks of TIBCO Software Inc. and/or its subsidiaries in the United States and/or other countries.

Java and all Java based trademarks and logos are trademarks or registered trademarks of Oracle and/or its affiliates.

All other product and company names and marks mentioned in this document are the property of their respective owners and are mentioned for identification purposes only.

This software may be available on multiple operating systems. However, not all operating system platforms for a specific software version are released at the same time. See the readme.txt file for the availability of this software version on a specific operating system platform.

THIS DOCUMENT IS PROVIDED "AS IS" WITHOUT WARRANTY OF ANY KIND, EITHER EXPRESS OR IMPLIED, INCLUDING, BUT NOT LIMITED TO, THE IMPLIED WARRANTIES OF MERCHANTABILITY, FITNESS FOR A PARTICULAR PURPOSE, OR NON-INFRINGEMENT.

THIS DOCUMENT COULD INCLUDE TECHNICAL INACCURACIES OR TYPOGRAPHICAL ERRORS. CHANGES ARE PERIODICALLY ADDED TO THE INFORMATION HEREIN; THESE CHANGES WILL BE INCORPORATED IN NEW EDITIONS OF THIS DOCUMENT. TIBCO SOFTWARE INC. MAY MAKE IMPROVEMENTS AND/OR CHANGES IN THE PRODUCT(S) AND/OR THE PROGRAM(S) DESCRIBED IN THIS DOCUMENT AT ANY TIME.

THE CONTENTS OF THIS DOCUMENT MAY BE MODIFIED AND/OR QUALIFIED, DIRECTLY OR INDIRECTLY, BY OTHER DOCUMENTATION WHICH ACCOMPANIES THIS SOFTWARE, INCLUDING BUT NOT LIMITED TO ANY RELEASE NOTES AND "READ ME" FILES.

This and other products of TIBCO Software Inc. may be covered by registered patents. Please refer to TIBCO's Virtual Patent Marking document (<https://www.tibco.com/patents>) for details.

Copyright © 1995-2021. TIBCO Software Inc. All Rights Reserved.