



# **TIBCO Statistica<sup>®</sup>**

## Security Guide

*Version 14.0.1*  
*July 2022*



# Contents

---

<b>Contents</b>	<b>2</b>
<b>Introduction</b>	<b>3</b>
<b>Product Connectivity - Authentication</b>	<b>4</b>
TIBCO® Data Science Service for TIBCO Spotfire® Authentication	5
<b>Product Connectivity - Authorization</b>	<b>8</b>
TIBCO® Data Science Service for TIBCO Spotfire® Authorization	9
<b>User Interactions with Authentication - Authorization</b>	<b>10</b>
<b>Restricting Access to Sensitive Data</b>	<b>11</b>
<b>Considerations for Output</b>	<b>13</b>
<b>Post-Installation Activities</b>	<b>14</b>
<b>TIBCO Documentation and Support Services</b>	<b>15</b>
<b>Legal and Third-Party Notices</b>	<b>17</b>

# Introduction

---

The goal of a data science product like TIBCO Statistica® is to access data and generate analytic results.

The raw data might contain personal identifying information and can be a potential liability due to privacy laws, like General Data Protection Regulation (GDPR). Or the raw data can be seen as an important investment that needs to be protected from corporate spying. The analytic results can be sensitive because it is the special feature with which the company can keep operational costs under control, maximize a sales plan, find fraud, discover a drilling site, and perform drug discovery.

To accommodate the security concerns associated with these factors, Statistica implements role-based access controls (RBAC) for its centralized metadata store, also known as Statistica Enterprise database. It supports authentication based on Windows Active Directory or through a custom user account database. Authorization is achieved through roles and groups defined in the metadata store, controlling access and starting specific applications in the software suite, as well as the ability for defining and using metadata objects like database connections, queries, and analyses.

These metadata (objects) are created, edited, reviewed, versioned, approved, and deleted using the Statistica Enterprise Manager application, which is a part of the Statistica client installation.

# Product Connectivity - Authentication

---

For customers who own TIBCO Statistica® Server or TIBCO® Data Science - Operations, the following applies:

The Statistica client application authenticates when started.

The application uses either Windows Integrated Authentication, using the current Windows user identity or an explicit login with account credentials defined in the Statistica Enterprise user database. Statistica client application has two utility components to retrieve data from a database, Statistica Query and Advanced Query. The user needs an additional login and password to be authorized to retrieve data.

One of the metadata elements is users and groups for roles based security. These users and groups can be synced with Windows domain groups or can be synced with local users on the server. Or custom user accounts can be created within the Statistica system.

Here are example group names that define what applications work with the login. A user can be listed in one or all of the groups, depending on their role. These are system groups that grant access to start an application or log in to a web server. They do not actually grant permission to execute a specific analytic project.

- Ad-hoc Analysis; user can log in to the Statistica application with USR permission
- Administrators; user can log in to the Statistica Enterprise Manager application with SADM permission
- Manual Data Entry Users; user can log in to Statistica Data Entry web server with DE permission
- Spotfire Users; Spotfire Analyst or Spotfire Consumer open DXP file that needs permission to execute a Workspace with WUSR permission
- Web Users; user can log in to WebStatistica with WUSR permission

For more information, see the [Server Administrator's Guide](#).

# TIBCO® Data Science Service for TIBCO Spotfire® Authentication

TIBCO® Data Science Service for TIBCO Spotfire® is also known as Statistica Service. Read the *TIBCO® Data Science Service for TIBCO Spotfire® Installation and Configuration Guide* prior to reading this section.

## Statistica Service Configuration

This section is focused on the following properties: `statistica.enterprise`, `statistica.enterprise.user`, and `statistica.enterprise.password`.

The `statistica.enterprise` property must be set to `TRUE` to allow Spotfire consumers to execute Spotfire Analysis (DXP files) that are linked to Statistica Workspaces (SDM files) saved in Statistica Enterprise database. An organization can use this configuration and access the following capabilities:

- If you need an audit trail of every execution for a Statistica Workspace linked to a specific user, date, and time. This information is captured within Statistica audit log with this configuration.
- Linking, rather than embedding, the SDM file to the DXP file potentially means fewer steps to publish changes. The SDM file can be modified and governed within Statistica.
- Data scientists can create one Workspace and use it within many DXP files. This makes governance easier with fewer objects to manage and approve.

If Enterprise integration is enabled with the `statistica.enterprise` switch, administrative Statistica Enterprise credentials are provided in `.user` and `.password` configuration fields.

These credentials are stored in a configuration file along with the service install on a TIBCO Spotfire Server node, with access limited to administrators of this server.

## Data Function Execution

When the Spotfire Consumer user logs in to a browser and opens a Spotfire Analysis that is linked to a Statistica Workspace stored in the Enterprise database, Statistica data functions might be executed in Spotfire Server environment. This requires two logins.

- Spotfire Consumer log in to Spotfire Server

- Statistica user log in to retrieve the Workspace

When a data function executes, the current Spotfire user account is used by the Statistica Service to log in to Statistica.

**i Note:** When troubleshooting, set the log level in `custom.properties` to `DEBUG` and search for `Got spotfireUserName` to see what username was provided to the Statistica Service by the Spotfire Server.

When Spotfire and Statistica are configured to use Windows domain integrated login, then the Active Directory is responsible for Authentication. As the Spotfire Consumer has already logged in to the domain, there is certainty that *domain\fred* in Spotfire is the same *domain\fred* in Statistica.

For custom database users in Spotfire and Statistica user database, there is no certainty that *SPOTFIRE\fred* is the same person as *fred* within Statistica. If this scenario is required, then a policy needs to be established about creating users and using the same names within both systems. And the Statistica Service property would need to be configured as:

```
statistica.enterprise.spotfiredomain: SPOTFIRE
```

While SPOTFIRE is the default pseudo-domain, discuss this with your Spotfire administrator to confirm that this is true.

## Prohibited User Mappings

The `statistica.enterprise.prohibitedusermappings` property specifies custom database users that must not be mapped from Spotfire to Statistica. By default this is “admin;system”. A Spotfire administrator does not automatically get administrator rights within Statistica. To allow one or both of them, uncomment the property and remove the desired usernames, and add specific names you want to prohibit.

## Fallback User

The `statistica.enterprise.fallbackuser` property applies to the execution of a Data Function. By default this property is commented out and disabled.

This property can be used when you do not want employees to wait for the help desk to fix their login account within Statistica. It is important that DXP files always execute. All the Spotfire Consumers are trusted to see similar inputs and outputs.

This means that the user configuring the software can create a local user with Statistica Enterprise Manager. You can add this local user to this property and no other user must be created within Statistica Enterprise Manager. Also, this local user needs read permission (authorization) on the Statistica Workspaces in Statistica Enterprise Manager.

Use of fallbackuser property in the following three cases:

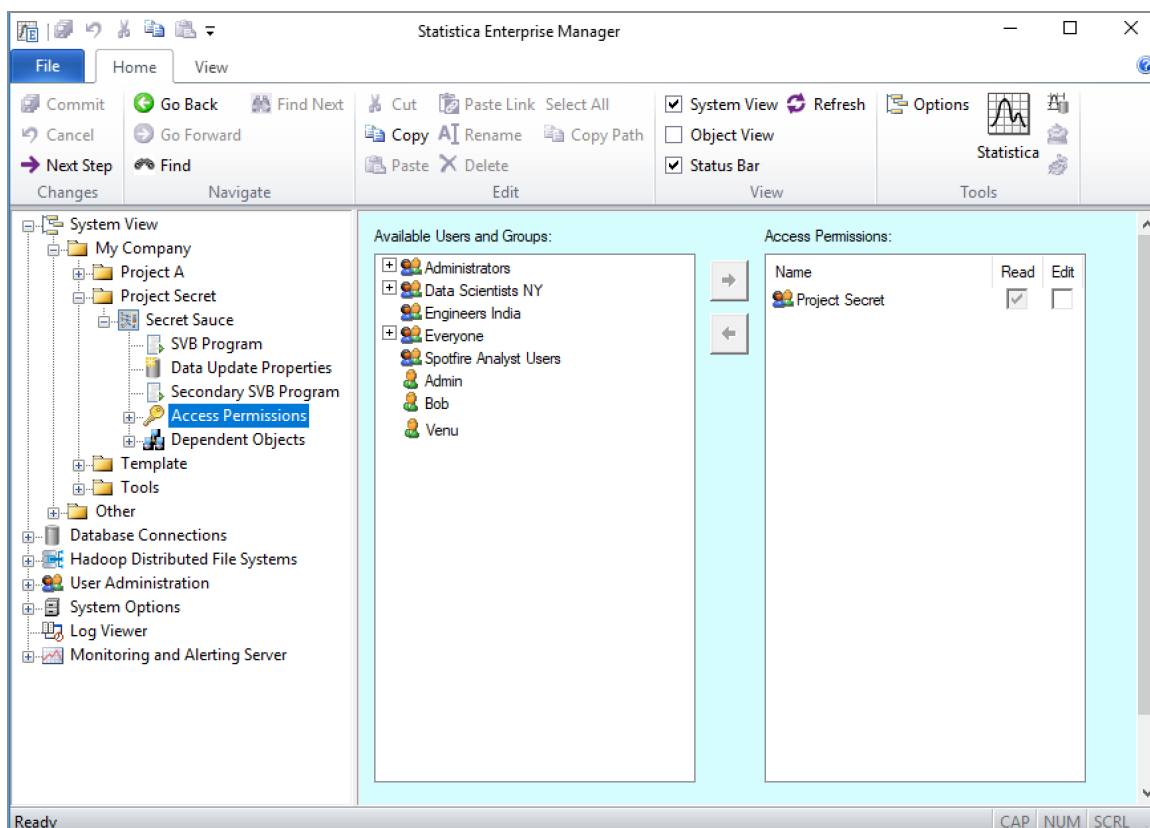
- Spotfire permission handles 100% authorization. User has the right to run a DXP file (Spotfire Analysis) and can also run the SDM file (Statistica Workspace) connected to it. In this case, you can create just one local user, and add it to this property.
- To track who executed the Statistica Workspace that is connected to the DXP file, you must use the audit trail within Statistica. In such cases, do not use this property.
- It takes days or a week to onboard employees and to get the new employee login created. You want new employees to be able to run DXP files if they have a Spotfire login, in this case this fall back user can help cover this timing issue.

# Product Connectivity - Authorization

Raw data that is in a file, .csv, needs to be authorized by policies to obtain access. For example, the company might require that data files are never emailed and must be shared using Google Drive or similar method which does have authorization by permissions.

TIBCO Statistica® Server and TIBCO® Data Science - Operations products provide the following authorization mechanism.

Metadata for objects like users, groups and their permissions (authorization), Files (Excel or Statistica Spreadsheet datasets), Data Configurations (SQL), and Analytic Configurations (workspaces) as mentioned earlier are managed using the Statistica Enterprise Manager application. These groups grant users edit and read (execute) permission for these objects. These are known as object groups.



In this image, the group **Project Secret** has read permission to the Workspace named **Secret Sauce**. Read permission grants read and execution permission. This Workspace can



be executed within the Statistica environment or within the Spotfire environment. It can be executed by a person logging in to a browser and an application making an API call.

Groups that are created for authorization tend to be named after teams, departments, or projects. These are object groups. They do not have any system permissions in them.

These groups are just a list of people. For example:

- Data Scientists NY
- Project Secret
- Team North

## **TIBCO® Data Science Service for TIBCO Spotfire® Authorization**

Spotfire consumers, who open a DXP file connected to an SDM file, require read permission on the SDM file. Read permission within the Statistica Enterprise Manager application also grants execution permission.

# User Interactions with Authentication - Authorization

---

A Statistica user has access to two workflow user experiences for retrieving input and generating output. The variety of input and output sources means that there may be security considerations for different workflows.

The users need this access to create analytic projects. You can create a project once and use it many times. The following list describes the two workflows.

- **Interactive:** User starts Statistica and opens a file or retrieves data from a database into a file. The user interacts (sees) the raw data. The user then selects algorithms off a menu to generate the analytics result.
- **Workspace (project):** User creates a Workspace by adding nodes (steps) that are connected to other nodes with arrows. This is a visual method to link the different steps required to complete a project; retrieve data, merge data, remove duplicates, basic statistics, neural networks to generate a model.

If the user owns one of the following products within TIBCO Data Science, there are additional user experiences.

- **TIBCO Statistica Server:** The user logs in to WebStatistica to execute a Workspace, select filters, and review results. Or the Workspace can be scheduled to execute at 10:00 PM every night and email the results to a manager.
- **TIBCO Data Entry Server:** The user logs in to manually enter data, validate data, and approve it. After entering the data, the user can execute a Workspace and review results.
- **TIBCO Monitoring & Alerting Server:** The user logs in to WebStatistica and reviews red/yellow/green alarms or receives an email alert.
- **TIBCO Live Score Server:** This is an API called to execute a Workspace or PMML model.
- **TIBCO Spotfire Analyst or TIBCO Spotfire Consumer:** The user opens Spotfire DXP file which executes a Statistica Workspace and displays results on the Spotfire UI.

# Restricting Access to Sensitive Data

---

To understand how data flows into the system, you can start with the Statistica client application. It can import and display data for a variety of file formats.

You can control access to this type of raw data by using file access permissions. For example, an admin grants a team access to read access for files in `\\file-server\teamA` directory. Or a company might require data files to be uploaded and shared using Google Drive or similar system.

The Statistica client application has two utility applications, Statistica Query and Advanced Query Builder, that can be used to retrieve data with a ADO.NET, ODBC or OLE DB database driver. The user can only retrieve data if they have a valid login and password for the database.

If you have installed TIBCO® Data Science - Operations or TIBCO Statistica® Server, explore the following questions:

- Since the application controls Authentication and Authorization, does company policy allow creation of system database login accounts? In other words, is it acceptable for the Database Connection to log in to Database "xyz" with a login "statistica"? And the groups configured within Statistica Enterprise Manager (Windows Domain) will grant access.
- What is the review process for SQL in the Data Configuration object? Should the Data Configuration call a stored procedure rather than SQL that was written within the application? If the raw data is not especially sensitive nature of data, then this question might be moot.
- Is there sensitive data embedded within a Workspace (Analysis Configuration) or File? If yes, you might need separate groups created for Authentication and Authorization.

The following data sources are supported; each may need a separate security group:

- A Statistica Workspace can call other Statistica Workspaces. Distinct workspaces may need distinct groups.
- TIBCO® Data Virtualization; publish an ODBC source
- TIBCO Spotfire® to access data sources using a data connection managed within the Spotfire Library

- TIBCO® Data Science - Team Studio in Hadoop or database; Statistica workspace calls Team Studio workflow and returns results into Statistica
- API - If the data source has an API, then the customer can write R, C#, Python, or Spark to access the data
- Hierarchical Process Cubes like Enterprise Resource Planning (ERP) such as SAP (MDX code)
- Data historian repositories such as the PI Data Historian from OSIsoft, Inc. and the newer PI AF / EF
- Statistica spreadsheet has ODBC driver and can be queried with SQL. A Statistica spreadsheet with upper and lower spec limits for a QC chart might be stored with Statistica Enterprise Manager. Then the data is queried using a Query Spreadsheet node within a Workspace (Analysis Configuration).
- Amazon S3
- H2O
- Unstructured text (text mining)
- Manual data entry using TIBCO Statistica® Data Entry Server (double blind data entry with analytics)

## Considerations for Output

---

To understand how data flows out the system, remember that results can be saved into file formats listed previously. A Workspace can be configured to email analytic results to an end user.

In the Workflow section, different methods of reviewing analytic results in a web server are listed. Access to these are controlled with permissions.

A Workspace can be configured to write the results to a database. Specifically the Write Spreadsheet to Database node in a Workspace contains a database login/password. This node can insert a table, drop a table, delete all rows from a table, and then insert new data.

# Post-Installation Activities

---

Options for Statistica desktop interface and documents are stored in the StatOpts.xml file. For more information on the post-installation configuration, see the [TIBCO Statistica® Options Configuration guide](#).

# TIBCO Documentation and Support Services

---

For information about this product, you can read the documentation, contact TIBCO Support, and join TIBCO Community.

## How to Access TIBCO Documentation

Documentation for TIBCO products is available on the [TIBCO Product Documentation](#) website, mainly in HTML and PDF formats.

The [TIBCO Product Documentation](#) website is updated frequently and is more current than any other documentation included with the product.

## Product-Specific Documentation

The following documentation for this product is available on [TIBCO Statistica® Product Documentation](#) page and [TIBCO Statistica®- All Servers Product Documentation](#) page:

- *TIBCO Statistica® Release Notes*
- *TIBCO Statistica® Installation*
- *TIBCO Statistica® Quick Reference*
- *TIBCO Statistica® Product Traceability*
- *TIBCO Statistica® Configuration for Windows Server 2019*
- *TIBCO Statistica® Data Entry Administration*
- *TIBCO Statistica® Server Administrator's Guide*
- *TIBCO Statistica® Options Configuration*
- *TIBCO Statistica® R Integration: Features and Options*
- *TIBCO Statistica® Security Guide*
- *TIBCO Statistica® User Guide*
- *TIBCO Statistica® Enterprise Manager Guide*
- *TIBCO Statistica® Statistica Object Model Guide*

- *TIBCO Statistica® Logistic Regression Formula Guide*
- *TIBCO Statistica® Stability Analysis Formula Guide*
- *TIBCO Statistica® Stepwise Model Builder Formula Guide*
- *TIBCO Statistica® Weight of Evidence Formula Guide*

The following documentation for this product is available on [TIBCO® Data Science for TIBCO Spotfire® Analyst Product Documentation](#) page:

- *TIBCO® Data Science for TIBCO Spotfire® Analyst Release Notes*
- *TIBCO® Data Science for TIBCO Spotfire® Analyst User Guide*

The following documentation for this product is available on [TIBCO® Data Science Service for TIBCO Spotfire® Product Documentation](#) page:

- *TIBCO® Data Science Service for TIBCO Spotfire® Release Notes*
- *TIBCO® Data Science Service for TIBCO Spotfire® User Guide*

## How to Contact TIBCO Support

Get an overview of [TIBCO Support](#). You can contact TIBCO Support in the following ways:

- For accessing the Support Knowledge Base and getting personalized content about products you are interested in, visit the [TIBCO Support](#) website.
- For creating a Support case, you must have a valid maintenance or support contract with TIBCO. You also need a user name and password to log in to [TIBCO Support](#) website. If you do not have a user name, you can request one by clicking **Register** on the website.

## How to Join TIBCO Community

TIBCO Community is the official channel for TIBCO customers, partners, and employee subject matter experts to share and access their collective experience. TIBCO Community offers access to Q&A forums, product wikis, and best practices. It also offers access to extensions, adapters, solution accelerators, and tools that extend and enable customers to gain full value from TIBCO products. In addition, users can submit and vote on feature requests from within the [TIBCO Ideas Portal](#). For a free registration, go to [TIBCO Community](#).



# Legal and Third-Party Notices

---

SOME TIBCO SOFTWARE EMBEDS OR BUNDLES OTHER TIBCO SOFTWARE. USE OF SUCH EMBEDDED OR BUNDLED TIBCO SOFTWARE IS SOLELY TO ENABLE THE FUNCTIONALITY (OR PROVIDE LIMITED ADD-ON FUNCTIONALITY) OF THE LICENSED TIBCO SOFTWARE. THE EMBEDDED OR BUNDLED SOFTWARE IS NOT LICENSED TO BE USED OR ACCESSED BY ANY OTHER TIBCO SOFTWARE OR FOR ANY OTHER PURPOSE.

USE OF TIBCO SOFTWARE AND THIS DOCUMENT IS SUBJECT TO THE TERMS AND CONDITIONS OF A LICENSE AGREEMENT FOUND IN EITHER A SEPARATELY EXECUTED SOFTWARE LICENSE AGREEMENT, OR, IF THERE IS NO SUCH SEPARATE AGREEMENT, THE CLICKWRAP END USER LICENSE AGREEMENT WHICH IS DISPLAYED DURING DOWNLOAD OR INSTALLATION OF THE SOFTWARE (AND WHICH IS DUPLICATED IN THE LICENSE FILE) OR IF THERE IS NO SUCH SOFTWARE LICENSE AGREEMENT OR CLICKWRAP END USER LICENSE AGREEMENT, THE LICENSE(S) LOCATED IN THE “LICENSE” FILE(S) OF THE SOFTWARE. USE OF THIS DOCUMENT IS SUBJECT TO THOSE TERMS AND CONDITIONS, AND YOUR USE HEREOF SHALL CONSTITUTE ACCEPTANCE OF AND AN AGREEMENT TO BE BOUND BY THE SAME.

This document is subject to U.S. and international copyright laws and treaties. No part of this document may be reproduced in any form without the written authorization of TIBCO Software Inc.

TIBCO, the TIBCO logo, the TIBCO O logo, Statistica, Spotfire, Process Tree Viewer, Process Data Explorer, Predictive Claims Flow, Making the World More Productive, Live Score, Electronic Statistics Textbook, Decisioning Platform, Data Health Check, and Better Decisioning are either registered trademarks or trademarks of TIBCO Software Inc. in the United States and/or other countries.

Java and all Java based trademarks and logos are trademarks or registered trademarks of Oracle and/or its affiliates.

This document includes fonts that are licensed under the SIL Open Font License, Version 1.1, which is available at: <https://scripts.sil.org/OFL>

Copyright (c) Paul D. Hunt, with Reserved Font Name Source Sans Pro and Source Code Pro.

All other product and company names and marks mentioned in this document are the property of their respective owners and are mentioned for identification purposes only.

This software may be available on multiple operating systems. However, not all operating system platforms for a specific software version are released at the same time. See the readme file for the availability of this software version on a specific operating system platform.

THIS DOCUMENT IS PROVIDED “AS IS” WITHOUT WARRANTY OF ANY KIND, EITHER EXPRESS OR IMPLIED, INCLUDING, BUT NOT LIMITED TO, THE IMPLIED WARRANTIES OF MERCHANTABILITY, FITNESS FOR A PARTICULAR PURPOSE, OR NON-INFRINGEMENT.

THIS DOCUMENT COULD INCLUDE TECHNICAL INACCURACIES OR TYPOGRAPHICAL ERRORS. CHANGES ARE PERIODICALLY ADDED TO THE INFORMATION HEREIN; THESE CHANGES WILL BE INCORPORATED IN NEW EDITIONS OF THIS DOCUMENT. TIBCO SOFTWARE INC. MAY MAKE IMPROVEMENTS AND/OR CHANGES IN THE PRODUCT(S) AND/OR THE PROGRAM(S) DESCRIBED IN THIS DOCUMENT AT ANY TIME.

THE CONTENTS OF THIS DOCUMENT MAY BE MODIFIED AND/OR QUALIFIED, DIRECTLY OR INDIRECTLY, BY OTHER DOCUMENTATION WHICH ACCOMPANIES THIS SOFTWARE, INCLUDING BUT NOT LIMITED TO ANY RELEASE NOTES AND "READ ME" FILES.

This and other products of TIBCO Software Inc. may be covered by registered patents. Please refer to TIBCO's Virtual Patent Marking document (<https://www.tibco.com/patents>) for details.

Copyright © 1995-2022. TIBCO Software Inc. All Rights Reserved.