

TIBCO Statistica™ Release Notes

Software Release 13.3.1

November 2017

Two-Second Advantage®



Important Information

SOME TIBCO SOFTWARE EMBEDS OR BUNDLES OTHER TIBCO SOFTWARE. USE OF SUCH EMBEDDED OR BUNDLED TIBCO SOFTWARE IS SOLELY TO ENABLE THE FUNCTIONALITY (OR PROVIDE LIMITED ADD-ON FUNCTIONALITY) OF THE LICENSED TIBCO SOFTWARE. THE EMBEDDED OR BUNDLED SOFTWARE IS NOT LICENSED TO BE USED OR ACCESSED BY ANY OTHER TIBCO SOFTWARE OR FOR ANY OTHER PURPOSE.

USE OF TIBCO SOFTWARE AND THIS DOCUMENT IS SUBJECT TO THE TERMS AND CONDITIONS OF A LICENSE AGREEMENT FOUND IN EITHER A SEPARATELY EXECUTED SOFTWARE LICENSE AGREEMENT, OR, IF THERE IS NO SUCH SEPARATE AGREEMENT, THE CLICKWRAP END USER LICENSE AGREEMENT WHICH IS DISPLAYED DURING DOWNLOAD OR INSTALLATION OF THE SOFTWARE (AND WHICH IS DUPLICATED IN THE LICENSE FILE) OR IF THERE IS NO SUCH SOFTWARE LICENSE AGREEMENT OR CLICKWRAP END USER LICENSE AGREEMENT, THE LICENSE(S) LOCATED IN THE "LICENSE" FILE(S) OF THE SOFTWARE. USE OF THIS DOCUMENT IS SUBJECT TO THOSE TERMS AND CONDITIONS, AND YOUR USE HEREOF SHALL CONSTITUTE ACCEPTANCE OF AND AN AGREEMENT TO BE BOUND BY THE SAME.

This document contains confidential information that is subject to U.S. and international copyright laws and treaties. No part of this document may be reproduced in any form without the written authorization of TIBCO Software Inc.

TIBCO, Better Decisioning, Data Health Check, Data Science, Decisioning Platform, Electronic Statistics Textbook, Information Bus, Live Score, Making the World Productive, Messaging Appliance, Predictive Claims Flow, Process Data Explorer, Process Tree Viewer, Rendezvous, Statistica, Statsoft, Statsoft Iberica, The Power of Now, TIB, TIBCO Rendezvous, and Two-Second Advantage are either registered trademarks or trademarks of TIBCO Software Inc. in the United States and/or other countries.

Enterprise Java Beans (EJB), Java Platform Enterprise Edition (Java EE), Java 2 Platform Enterprise Edition (J2EE), and all Java-based trademarks and logos are trademarks or registered trademarks of Oracle Corporation in the U.S. and other countries.

All other product and company names and marks mentioned in this document are the property of their respective owners and are mentioned for identification purposes only.

THIS SOFTWARE MAY BE AVAILABLE ON MULTIPLE OPERATING SYSTEMS. HOWEVER, NOT ALL OPERATING SYSTEM PLATFORMS FOR A SPECIFIC SOFTWARE VERSION ARE RELEASED AT THE SAME TIME. SEE THE README FILE FOR THE AVAILABILITY OF THIS SOFTWARE VERSION ON A SPECIFIC OPERATING SYSTEM PLATFORM.

THIS DOCUMENT IS PROVIDED "AS IS" WITHOUT WARRANTY OF ANY KIND, EITHER EXPRESS OR IMPLIED, INCLUDING, BUT NOT LIMITED TO, THE IMPLIED WARRANTIES OF MERCHANTABILITY, FITNESS FOR A PARTICULAR PURPOSE, OR NON-INFRINGEMENT.

THIS DOCUMENT COULD INCLUDE TECHNICAL INACCURACIES OR TYPOGRAPHICAL ERRORS. CHANGES ARE PERIODICALLY ADDED TO THE INFORMATION HEREIN; THESE CHANGES WILL BE INCORPORATED IN NEW EDITIONS OF THIS DOCUMENT. TIBCO SOFTWARE INC. MAY MAKE IMPROVEMENTS AND/OR CHANGES IN THE PRODUCT(S) AND/OR THE PROGRAM(S) DESCRIBED IN THIS DOCUMENT AT ANY TIME.

THE CONTENTS OF THIS DOCUMENT MAY BE MODIFIED AND/OR QUALIFIED, DIRECTLY OR INDIRECTLY, BY OTHER DOCUMENTATION WHICH ACCOMPANIES THIS SOFTWARE, INCLUDING BUT NOT LIMITED TO ANY RELEASE NOTES AND "READ ME" FILES.

Copyright © 2017 TIBCO Software Inc. All rights reserved. TIBCO Software Inc. Confidential Information

Contents

TIBCO Documentation and Support Services.....	4
How to Contact TIBCO Support	4
How to Join TIBCO Community	4
Overview	5
New Features – All Products	5
Stepwise Mode Builder – Logistic Regression	5
Workspace	5
New Features – Statistica Server	5
Enterprise Manager.....	5
Rules Builder	5
Changes in Platform Support	6
Migration and Compatibility	7
Resolved Issues	8
System Requirements	10
Statistica Single User or Client Workstation.....	10
Statistica Server Database Sizing and Location.....	12
Statistica Server.....	13
Statistica Live Score.....	14
Statistica Monitoring and Alerting Server (MAS)	16
Statistica Server Web Server	17

TIBCO Documentation and Support Services

Documentation for this and other TIBCO products is available on the TIBCO Documentation site. This site is updated more frequently than any documentation that might be included with the product. To ensure that you are accessing the latest available help topics, visit:

<https://docs.tibco.com>

How to Contact TIBCO Support

For comments or problems with this manual or the software it addresses, contact TIBCO Support:

- For an overview of TIBCO Support, and information about getting started with TIBCO Support, visit this site:

<http://www.tibco.com/services/support>

- If you already have a valid maintenance or support contract, visit this site:

<https://support.tibco.com>

Entry to this site requires a user name and password. If you do not have a user name, you can request one.

How to Join TIBCO Community

TIBCOmmunity is an online destination for TIBCO customers, partners, and resident experts. It is a place to share and access the collective experience of the TIBCO community.

<https://www.tibcommunity.com>

Overview

Statistica 13.3 is a minor release.

New Features – All Products

The following features are found in all Statistica products.

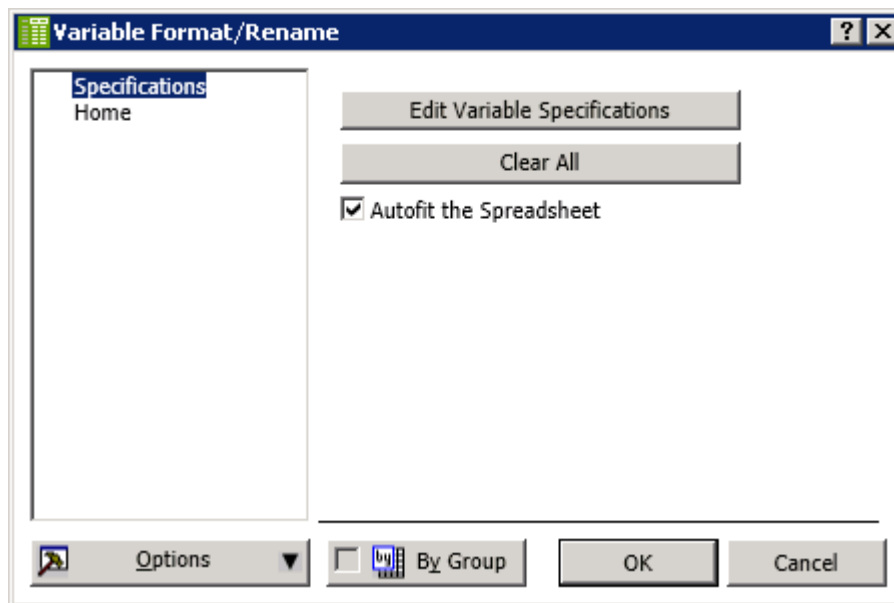
Stepwise Mode Builder – Logistic Regression

Somers' D calculation was changed. Prior to 13.3.1 it was calculated based on the analysis sample. It is now based on the hold-out sample for bootstrap function.

Somer's D is used to explore the quality of a binary variable like "good credit" vs "bad credit".

Workspace

Added new option in the Variable Format/Rename node. It will to autofit the width of the variable based on the data.



New Features – Statistica Server

Statistica Server is a collection of applications and systems used to provide roles based security and manage metadata.

Enterprise Manager

Versioning must be turned on to see this change. After reverting a version of an object, the Approve button is immediately available. This allows for reverting and approving to be completed within the same dialog.

Rules Builder

Versioning must be turned on to see this change. It is now possible to create variables which

contain the version, path and id of the Rules object within Enterprise Manager. Examples:

```
rules_revision = EvalExpr('Dictionary("RulesEnterpriseVersion")')
```

```
rules_path = EvalExpr('Dictionary("RulesEnterprisePath")')
```

```
rules_id = EvalExpr('Dictionary("RulesEnterpriseId")')
```

Changes in Platform Support

The following are changes in platform support in version 13.3 of Statistica. For a complete list of all the currently supported platforms, refer to the Readme file.

As of Platform	Status	Notes
Microsoft Windows Vista	Deprecated	Microsoft no longer supports this operating system.

Deprecated and Changed Features

The following changes have been made to the Statistica product names and licensing.

Component/Product	Deprecated, Changed or Removed
Statistica Enterprise Server	Changed. Statistica Server is the new name
Statistica Expert Manufacturing	Changed. Statistica Expert Quality Control is the new name for this analytic base product.
Statistica Web Data Entry Server	Changed. Statistica Data Entry Server is the new name. This server will be licensed per processor rather than per server.
Statistica Text Miner	Changed. Statistica Text Miner is now included in the user licensing for Statistica Enterprise. It will no longer be sold as an add-on. Customers who own Statistica Text Miner will receive Statistica Enterprise licensing.
Statistica Enterprise Server Viewer Per Concurrent User	Deprecated. We will no longer license servers per concurrent user. Servers will be licensed per processor only.
Statistica Monitoring & Alerting Server (Mas) Viewer Per Concurrent User	Deprecated. We will no longer license servers per concurrent user. Servers will be licensed per processor only.
Statistica Data Entry Server Per Concurrent User	Deprecated. We will no longer license servers per concurrent user. Servers will be licensed per processor only.

Migration and Compatibility

Before installing or upgrading to Statistica 13.3.1, ensure that your system meets the minimum system requirements.

Customers who have Statistica 12.0.65.4 or later installed on their computers can upgrade to 13.3.1. The installer will ask if the customer wants to upgrade the installation. The customers must select the checkbox agreeing to upgrade the older Statistica installation.

Customers with older versions must uninstall Statistica and then install Statistica 13.3.1.

Contact <https://support.tibco.com> to request Statistica 13.3.1 keys.

If you own Statistica Server and using versioning for changes, you must download Statistica Document Management System 1.0.9.0 (SDMS) from <https://edelivery.tibco.com>.

Customers who have SDMS 1.0.6.0, 1.0.7.0 or 1.0.8.0 installed only need to run the 1.0.9.0 installer to upgrade.

Customers who have a SDMS 1.0.2.3 or 1.0.4.0 installed can upgrade by following these instructions:

1. Run Statistica installer and upgrade the Statistica installation.
2. Request “access code to add SDMS licensing” on <https://support.tibco.com>
3. When you receive the access code, follow the emailed instructions on how to apply the code.
4. Run the SDMS 1.0.9.0 installer, which will upgrade the SDMS files.
5. Copy ClientSTAT.tmp file from FlexLM server directory (example, C:\Program Files (x86)\Statistica\FLEXlm) to SDMS server directory. The file should be renamed to stat.lic.
6. Restart SDMS service.

Customers with older versions of SDMS should open a support request, <https://support.tibco.com>, to plan their upgrade of SDMS. The support engineer will need the Statistica version number and SDMS version number.

Resolved Issues

The table lists resolved issues in version 13.3.1 of Statistica for Statistica Professional, Statistica Expert Quality Control, Statistica Expert Data Science, Statistica Enterprise and Statistica Pharma

Key	Summary	Module
STAT-2979	Exporting data into SPSS .SAV data files works correctly without truncation	Export Data
STAT-4141 and STAT-4568	2D scatterplot now displays R square and other statistics	Graph
STAT-4177	Export Data node's default encoding for text files is now "windows code page"	Workspace
STAT-4188	This issue was seen by customers who upgraded from 13.x to 13.3 and is fixed in 13.3.1. The font size appeared to change if DPI (Control Panel → Display) was greater than 100%.	Workspace
STAT-4192	Dynamic Variable Stack node now stacks the last variable.	Workspace
STAT-4222	This impacted the Code Node for R, Python and C#. When a locale used comma as decimal separator, parameters like 0,5 would error.	Node
STAT-4227	ROUNDEVEN(2.05,1) rounds to 2.1 instead of 2.0. This has been fixed.	Function
STAT-4233	Statistica now works with Microsoft R Open and using a spreadsheet as a parameter	R Integration
STAT-4236	"Not enough disk space" error was incorrectly displayed while querying and retrieving millions of rows that included variable length text variables.	Spreadsheets
STAT-4243	If R is installed when Statistica starts, a dialog will open and ask if the R integration should be enabled.	R Integration
STAT-4341	LOOKUP() function now works with missing data	Function
STAT-4407	Improved error message when using Spark node	workspace

The table lists closed issues in version 13.3.1 of Statistica for Statistica Server.

Key	Summary	Module
STAT-4234	Improved performance in browsing and selecting items from the Enterprise tree content. Note this is when the user selects "Run Analysis or Report".	WebStatistica
STAT-4771	The format of the SQL (example: blank lines removed) in Data Configurations changes after clicking submit button.	Enterprise Manager

The table lists closed issues in version 13.3.1 of Statistica for Statistica Server and Statistica Data Entry Server.

Key	Summary	Module
STAT-4159	The issue shows up when an Analysis Configuration uses Data Entry Setup as a data source. When an Analysis Configuration runs and prompts for cause and action, the user enters the cause/action text. The second time the Analysis Configuration is run the cause/action text is not displayed.	Analysis Configuration within Enterprise Manager
STAT-4235	Performance has improved when multiple people are entering data on with the same Data Entry Setup.	Data Entry Server

System Requirements

Before installing or upgrading to Statistica 13.3, ensure that your system meets the following minimum hardware and software requirements.

We recommend the 64-bit version of Statistica with 64-bit processor and operating system. If the 32-bit version of Statistica must be used, we recommend running it in a 64-bit environment for better performance.



IMPORTANT

The 32-bit version of Statistica requires processor support for the SSE2 instruction set.

The optional advanced hardware graphics support for transparency requires a graphics card that supports Direct2D.

For integration with Python please use 2.7.11 or 3.5.1. Panda 0.18.1 is also recommended for the extension functions. The comtypes module is required for Python integration.

For R integration, 3.2.1 is supported.

For H2O integration, H2O 3.10.4.7 and sparkling-water-2.1.7 are supported. This runs Spark 2.1.0.

Statistica Single User or Client Workstation

Minimum hardware requirements for standard client configuration

Requirement	Details
Processor	500 MHz, 32-bit version of Statistica requires processor support for the SSE2 instruction set
Memory	4 GB RAM
Hard disk space for installation	10 GB
Minimum Scratch/Temporary Disk Space	50 GB recommended per user
Operating System	Microsoft Windows™ 7 or above

Recommended hardware requirements for standard client configuration

Requirement	Details
Processor	2.0 GHz, 64-bit, quad core or more
Memory	4 GB RAM or more
Hard disk space for installation	10 GB
Minimum Scratch/Temporary Disk Space	50 GB recommended per user
Operating System	Microsoft Windows™ 8 or above

Recommended hardware requirements for advanced analytic configuration, including data mining applications

Requirement	Details
Processor	2.0 GHz, 64-bit, quad core or more
Memory	8 GB RAM or more
Hard disk space for installation	10 GB
Minimum Scratch/Temporary Disk Space	50 GB recommended per user
Operating System	Microsoft Windows™ 8 or above

Statistica Server Database Sizing and Location

Statistica Server requires deployment of a metadata database schema on an ODBC compliant database. Most commonly, it will be deployed on the existing customer DBMS infrastructure, such as Oracle or SQL Server. The system can also deploy SQL Server Express. It supports other DBMS systems as well.

Customers who own Statistica Server also own licensing for the Statistica Document Management Server (SDMS) for managing version and approval history. Installing SDMS is optional, and it has a separate database schema, which is usually deployed to the same DBMS system where the metadata database has been deployed.

The database sizing requirements vary on usage. The actual metadata describing the Statistica objects is small, but the tablespace can be used to store reports and files (Excel, scripts) within the database (stored as BLOBs), which can increase the overall size.

The Statistica Application Server and the metadata database should be installed within the same local area network for performance reasons. The location of the data to be analyzed should also be reviewed when deciding where to install Statistica Server and the metadata database. Depending on the situation, customers may decide to install within their data center or at a local office to avoid transporting big data over a slow network.

Recommended metadata schema database sizing

Requirement	Details
Initial tablespace	1 GB, grow 1 GB intervals
If explicit cap required	100 GB but may need to grow over time
Operating system	Microsoft Windows™ Server 2012 or later

The Statistica Document Management Server schema contains only metadata about the individual document storage. The document storage is kept outside the database; therefore, SDMS tablespace requirements are small.

Recommended SDMS schema database sizing

Requirement	Details
Initial tablespace	100 MB

Requirement	Details
Network Bandwidth	100 MBits/s or faster
Operating system	Microsoft Windows™ Server 2012 or later

Statistica Server

We recommend that Statistica software be run on a server dedicated to Statistica Server, the Statistica Server Web Server, the Statistica License Manager, and the Statistica Document Management Server (SDMS), independent from any other application software.

The Statistica Server is an analytic engine. Statistica Server application files are stored and Statistica Server scripts are executed here.

In most cases, the Statistica Server will also run the Statistica Server Web Server, the Statistica Document Management server (if applicable), and the Statistica License Manager, which is required for all concurrently licensed products.

This server may be referred to as the Statistica Application Server or Statistica Server.

Minimum hardware requirements

Requirement	Details
Processor	1 GHz, 32-bit version of Statistica requires processor support for the SSE2 instruction set
Memory	4 GB RAM
Hard disk space for installation	10 GB
Minimum Scratch/Temporary Disk Space	50 GB or more
Network Bandwidth	100 MBits/s or faster
Operating System	Microsoft Windows™ Server 2008 R2 or later

Recommended hardware requirements

Requirement	Details
Processor	2.0 GHz, 64-bit, quad core or more
Memory	8 GB RAM
Hard disk space for installation	10 GB
Minimum Scratch/Temporary Disk Space	100 GB or more
Network Bandwidth	100 MBits/s or faster
Operating System	Microsoft Windows™ Server 2012 or later

Software requirements

Requirement	Details
Microsoft Internet Information Server (IIS)	Installed and configured to run ISAPI and CGI applications
Microsoft .NET Framework	Install 3.5 and 4.6.1



IMPORTANT

System Requirements are based on an average size implementation.

These requirements apply to the Statistica Enterprise Server Web Server, Statistica License Manager, and SDMS server (if applicable). If any of these are to be run on a separate server, refer to their specific System Requirements.

Statistica Live Score

We recommend that Statistica Live Score software be run on a server dedicated to Statistica Live Score, independent from any other application software. This is a transaction server with

an API.

The Statistica Live Score Server is the analytic engine that receives and executes the scoring/WebService (SOAP) calls for Statistica Live Score. The analytic projects that the server executes are stored in the Statistica Server's metadata database.

Minimum hardware requirements

Requirement	Details
Processor	1 GHz, 32-bit version of Statistica requires processor support for the SSE2 instruction set
Memory	4 GB RAM
Hard disk space for installation	10 GB
Minimum Scratch/Temporary Disk Space	50 GB or more
Network Bandwidth	100 MBits/s or faster
Operating System	Microsoft Windows™ Server 2008 R2 or later

Recommended hardware requirements

Requirement	Details
Processor	2.0 GHz, 64-bit, quad core or more
Memory	8 GB RAM
Hard disk space for installation	10 GB
Minimum Scratch/Temporary Disk Space	100 GB or more

Requirement	Details
Network Bandwidth	100 MBits/s or faster
Operating System	Microsoft Windows™ Server 2012 or later



IMPORTANT

System Requirements are based on an average size implementation. Statistica Live Score applications often benefit from additional cores, depending on how many simultaneous requests are expected.

The Statistica Live Score is part of the Statistica Server platform. Installation of the Statistica Server Application Server must occur prior to the installation of the Live Score Server.

Statistica Monitoring and Alerting Server (MAS)

We recommend that Statistica MAS software be run on a server dedicated to Statistica MAS, independent from any other application software. Users will log onto a web browser to review the red light, yellow light, green light alerts. Alerts can also be configured to be sent by email.

Minimum hardware requirements

Requirement	Details
Processor	1 GHz, 32-bit version of Statistica requires processor support for the SSE2 instruction set
Memory	4 GB RAM
Hard disk space for installation	10 GB
Minimum Scratch/Temporary Disk Space	50 GB or more
Network Bandwidth	100 MBits/s or faster
Operating System	Microsoft Windows™ Server 2008 R2 or later

Recommended hardware requirements

Requirement	Details
Processor	2.0 GHz, 64-bit, quad core or more
Memory	8 GB RAM
Hard disk space for installation	10 GB
Minimum Scratch/Temporary Disk Space	100 GB or more
Network Bandwidth	100 MBits/s or faster
Operating System	Microsoft Windows™ Server 2012 or later



IMPORTANT

The Statistica Monitoring and Alerting Server (MAS) is part of the Statistica Server platform. Installation of the Statistica Server Application Server must occur prior to the installation of the MAS Server.

Statistica Server Web Server

The Statistica Server Web Server runs the web scripting language PHP, processes the web pages from the user, and sends them to the Statistica Server Application Server.

Use the following System Requirements in the special situation where the web server portion of Statistica Enterprise Server will be installed on a separate server from the Statistica Server Application Server.

Minimum hardware requirements

Requirement	Details
Processor	1 GHz
Memory	2 GB RAM
Hard disk space for installation	30 GB
Network Bandwidth	100 MBits/s or faster
Operating System	Microsoft Windows™ Server 2008 R2 or later

Recommended hardware requirements

Requirement	Details
Processor	2.0 GHz, 64-bit, quad core or more
Memory	2 GB RAM
Hard disk space for installation	30 GB
Network Bandwidth	100 MBits/s or faster
Operating System	Microsoft Windows™ Server 2012 or later