

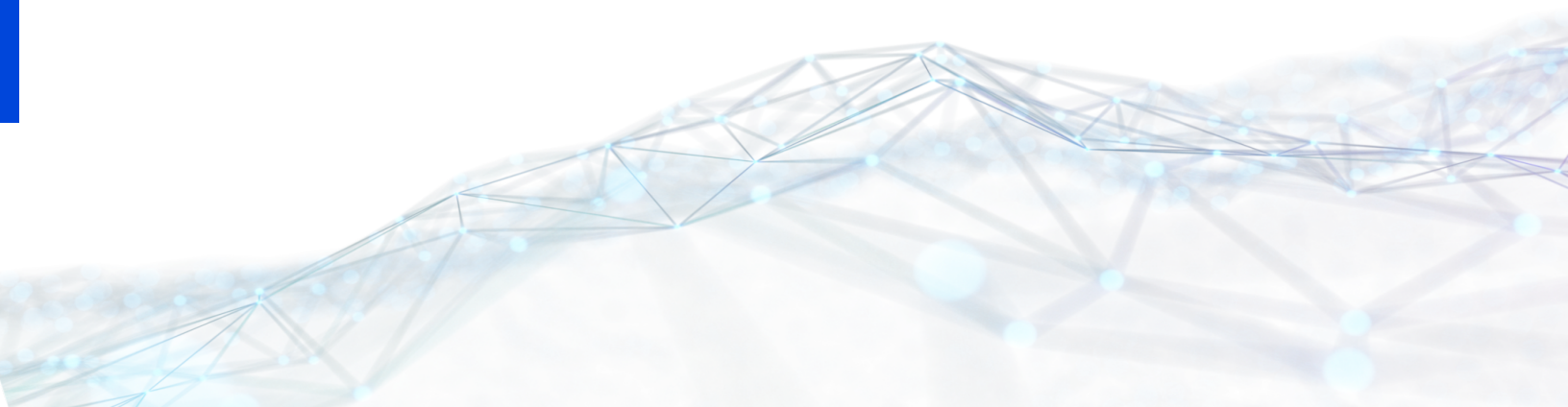


TIBCO® Data Virtualization

Release Notes

Version 8.8.0 | October 2023

Document Updated: January 2024



Contents

Contents	2
Installing TDV, Studio, BD and Drivers	4
Upgrade Instructions	5
Upgrading the Active Cluster from 8.7 to 8.8	8
Rollback	9
New in 8.8	13
TDV and Business Directory 8.8 Fixed Issues	17
Known Issues	27
TDV and Business Directory 8.7 Fixed Issues	40
TDV and Business Directory 8.6.1 Fixed Issues	56
TDV and Business Directory 8.6 Fixed Issues	58
TDV and Business Directory 8.5.4 Fixed Issues	70
TDV and Business Directory 8.5.3 Fixed Issues	80
TDV and Business Directory 8.5.2 Fixed Issues	81
TDV and Business Directory 8.5.1 Fixed Issues	82
TDV and Business Directory 8.5 Fixed Issues	83
TDV and Business Directory 8.4 Fixed Issues	86
Spotfire® Advanced Data Services License Restrictions	90

Jaspersoft® Advanced Data Services License Restrictions	91
TIBCO Data Virtualization for TIBCO Cloud™ Metadata - Metadata Harvesting Limited Edition License Restrictions	92
TIBCO Data Virtualization for Spotfire® Data Science - Team Studio License restrictions	93
TIBCO(R) Data Virtualization AWS Infrastructure License Restrictions	94
AWS Infrastructure	94
Refund Policy	94
TIBCO Documentation and Support Services	95
Release Version Support	96
Legal and Third-Party Notices	98

Installing TDV, Studio, BD and Drivers

Refer to the Installation Guide, section *Installing TDV, Studio, and Drivers* for instructions on using the installer to install TDV 8.8 Server, Studio and Drivers. Refer to the Business Directory Guide, section *Install Business Directory* for instructions on Installing Business Directory.

Note: Make sure your Windows OS has all the necessary updates installed, so that TDV installation can run smoothly. TDV installer and patch are packaged with VC++ redistributables which are needed for svn connections to run smoothly.

TDV installer installs Microsoft Visual VC++ version 2013. This is required for svn connections to be successful. When using a patch, this version of VC++ (2013) needs to be manually installed. Execute the file `vcredist_x64.exe` which can be found in the directory `<TDV_install_dir>\bin`. For more details about applying Service Pack refer to the next section [Upgrade Instructions_8_8.htm](#)

Upgrade Instructions

Upgrading TDV Server, Studio and Business Directory to a Long-Term Support (LTS) Release

Long-Term Support (LTS) releases are supported with Hotfixes and Service Packs for 2 years. This approach provides an option more suited for strictly regulated environments or for customers who prefer a supported environment that covers a longer period of time, without the need for upgrades when compared with an MS (Mainstream) release. Please refer to https://docs.tibco.com/pub/tdv/general/LTS/tdv_LTS_releases.htm for more information about the LTS Release Support information.

To Upgrade to the LTS Release

1. Optionally, perform a full TDV and Business Directory backup. For details about backup export, see the *TDV Administration Guide* or the *Business Directory Guide*.
2. If installing on Windows, be sure to use Run as Administrator.
3. For Windows, make sure to close any open windows to the repository/jdk folder.
4. Stop all TDV processes, instances, and databases.
5. Download the following TDV 8.8.0 zip files from [TIBCO edelivery](#) to the TDV installation directories:
 - TIB_tdv_server_8.8.0_all.zip (download the server zip file to your server installation folder.)
 - TIB_tdv_bd_8.8.0_all.zip (download the BD server zip file to your BD server installation folder.)
 - TIB_tdv_studio_8.8.0_all.zip (download the studio zip file to your studio installation folder.)
6. Unzip the files.

When asked whether to replace the existing files, reply Yes.

If you are not asked whether to replace files, the service pack is being extracted to

some directory other than <TDV_INSTALL_DIR>. The service pack must be extracted to the appropriate installation directory, and must overwrite files in that directory.

7. Run the following scripts to upgrade your product.

Notes: When running on a Linux/AIX environment, you will have to grant execute permission on the upgrade scripts. Run the following command to do this:

```
chmod 755 *.sh
```

If you are upgrading from TDV 8.5.5 to 8.8, follow these steps:

- i. Export Full Server Backup of TDV 8.5.5.
- ii. Install new TDV 8.8.
- iii. Import Full Server Backup from step 1 into the new TDV 8.8 install

If you are upgrading from TDV 8.4.x to 8.8, follow these steps:

- i. Run TDV 8.4.3 Upgrade process.
- ii. Run TDV 8.5.5 Upgrade process.
- iii. Run TDV 8.8 Upgrade process.

Refer to the [Upgrade Path - Examples](#) section in the *Installation Guide* for more information on the different upgrade paths.

8. Enter the repo and cache passwords when prompted.

Product	Directory	Script
TDV Studio	bin	studio_upgrade_patch.bat
TDV Server	bin	cis_upgrade_patch.<sh bat>
TDV Business Directory	bin	bd_upgrade_patch.<sh bat>

Note: On the windows platform only, if you are upgrading from a pre-8.7 TDV Server installation to TDV Server 8.7 or higher, you need to upgrade your TDV Studio to the same version you upgraded your TDV Server with.

9. (Optional) For svn connection to be successful, Microsoft Visual VC++ version 2013 is required. When using a TDV patch upgrade, this version of VC++ needs to be manually installed. Execute the file vcredist_x64.exe which can be found in the directory <TDV_install_dir>\bin.

10. (Optional) Follow this step only if you are using the default self signed TDV Server/Studio/Business Directory certificate files and you have upgraded from a TDV 8.4/8.5/8.6/8.7 installations.

Note : TDV installers provide default self signed certificates for SSL. We do not recommend using these for production TDV installations.

Now that you have upgraded your TDV Server/Business Directory/Studio to 8.8.0, the following steps will guide you on how to update your TDV self signed certs since you are using them.

1. Stop your TDV Server/Business Directory/Studio processes.

Note: you do not need to stop the Postgresql repository (TDV Server/Business Directory) nor cache (TDV Server only) processes.

2. Backup your existing TDV certificates

- TDV Server - backup files under `<TDV_INSTALL_DIR>/conf/server/security/*.jks` (cis_server_keystore.jks and cis_server_truststore.jks)
- TDV Business Directory - backup files under `<TDV_INSTALL_DIR>/conf/server/security/*.jks` (cis_server_keystore.jks and cis_server_truststore.jks)
- TDV Studio - backup files under `<TDV_INSTALL_DIR>/conf/studio/security/*.jks` (cis_studio_keystore.jks and cis_studio_truststore.jks)

3. Replace your TDV certificate files with ones from the latest TDV Server/Business Directory/Studio patch.

- TDV Server - copy `<TDV_INSTALL_DIR>/conf/server/security/installcerts/cis_server_keystore.jks` to `<TDV_INSTALL_DIR>/conf/server/security/cis_server_keystore.jks`
- TDV Business Server - copy `<TDV_INSTALL_DIR>/conf/server/security/installcerts/cis_server_keystore.jks` to `<TDV_INSTALL_DIR>/conf/server/security/cis_server_keystore.jks`
- TDV Studio - copy `<TDV_INSTALL_DIR>/conf/studio/security/installcerts/cis_studio_keystore.jks` to `<TDV_INSTALL_DIR>/conf/studio/security/cis_studio_keystore.jks`

4. Restart TDV Server/Business Directory/Studio processes.

To rollback the Mainstream Release that you just applied, refer to [Rollback](#).

Notes:

- Customers using advanced data source adapters that require OAuth authentication, need to first run TDV as a stand-alone server (no Monitor Daemon), set up OAuth once, and then run TDV with the Monitor Daemon.
- Sometimes when running Manager after a service pack install an error message pops up (Unable to finish loading...). You can safely ignore this message, close, and reopen Manager.

Upgrading the Active Cluster from 8.7 to 8.8

When updating Active Cluster, it is critical that clusterid remain unchanged. Changing it can adversely affect cached data.

These instructions are guidelines developed from testing with a two node Active Cluster environment.

To upgrade with scheduled system downtime

1. Determine and note the clusterid, so that it can remain unchanged.
2. Make sure that the cluster is in sync. That is, make sure both nodes are in the cluster and are functional.
3. Disable any cache refreshes on both of the nodes.
4. Configure the load balancer to stop sending traffic to node 1. Shutting down node 1 would cause in-flight requests to fail.
5. Remove node 1 from the cluster.
6. If your TDV products are running, stop them, including all processes and databases used as repositories or caches.
7. Apply the service pack or hot fix to node1.
8. Start up node 1, and re-join the cluster.
9. Configure the load balancer to send traffic to node 1 instead of node 2.
10. Remove node 2 from the cluster.
11. If your TDV products are running, stop them including all processes and databases used as repositories or caches.
12. Apply the service pack or hot fix to node 2.

13. Startup node 2 and rejoin cluster.
14. Enable cache refreshes on both of the nodes.
15. Verify the cluster status.

Rollback

1. If working on Windows, any open windows to the repository or jdk folder must be closed.
2. Make sure that the TDV Server is stopped.

```
composite.<bat|sh> monitor stop
```

Note: To check if the Monitor daemon has stopped completely, check for the “Bye” message in `cs_server.log`.

3. Start the TDV Server back up without the monitor, by running the following command:

```
composite_server.<bat|sh> run
```

4. You will be unable to downgrade your TDV version directly to an 8.5.x/8.6/8.7 version . You have to downgrade the TDV repository first to the corresponding 8.x release and then apply the upgrade patches accordingly.

To downgrade your TDV repository version to 8.5.x run the following command:

```
$ bin/server_util.bat/sh -server localhost -port 9400 -user xyz_admin -password <TDV ADMIN PASSWORD> -rollbackRepository -toVersion 8.5.0
```

To downgrade your TDV repository version to 8.6.x run the following command:

```
$ bin/server_util.bat/sh -server localhost -port 9400 -user xyz_admin -password <TDV ADMIN PASSWORD> -rollbackRepository -toVersion 8.6.0
```

To downgrade your TDV repository version to 8.7.x run the following command:

```
$ bin/server_util.bat/sh -server localhost -port 9400 -user xyz_admin -password <TDV ADMIN PASSWORD> -rollbackRepository -toVersion 8.7.0
```

Refer to the section [Verifying your Repository Version](#) to verify your repository version that you have downgraded to.

5. Kill all Java processes.
6. Stop repo and Cache.
7. Run the rollback script located in:

TDV Server:

```
<TDV_INSTALL_DIR>/install/rollback_TIB_tdv_server_<product
version>.<service pack number>_all.<bat|sh>
```

TDV Studio:

```
<TDV_INSTALL_DIR>/install/rollback_TIB_tdv_studio_<product
version>.<service pack number>_all.bat
```

Business Directory:

```
<TDV_INSTALL_DIR>/bd/install/rollback_TIB_tdv_bd_<product
version>.<service pack number>_all.<bat|sh>
```

8. Run the downgrade script located in:

TDV Server:

```
<TDV_INSTALL_DIR>/bin/cis_downgrade_patch.sh\bat
```

TDV Studio:

```
<TDV_INSTALL_DIR>/bin/studio_downgrade_patch.bat)
```

Business Directory:

```
<TDV_INSTALL_DIR>/bin/bd_downgrade_patch.sh\bat
```

9. Navigate to <TDV_INSTALL_DIR> and reapply the last service pack. After rollback it is necessary to apply the previous version of service pack before starting the server.

10. (Optional) Only follow this step if you updated the default self signed TDV Server/Studio/Business Directory certificate files for your previous 8.X upgrade.

Replace your existing TDV certificates with your previous backup of them.

- TDV Server - copy your backup jks files to <TDV_INSTALL_DIR>/conf/server/security/ (For example, cis_server_keystore.jks and cis_server_truststore.jks)
- TDV Business Directory - copy your backup jks files to <TDV_INSTALL_DIR>/conf/server/security/ (For example, cis_server_keystore.jks and cis_server_truststore.jks)
- TDV Studio - copy your backup jks files to <TDV_INSTALL_DIR>/conf/studio/security/ (For example, cis_studio_keystore.jks and cis_studio_truststore.jks)

11. **Only on AIX** - Manually update the path **"/dv/dev/projects/workspace/build"** in the files *conf/server/log4j2.properties* and *conf/monitor/log4j2.properties* to **{installDir}**.

12. Start the Monitor Daemon.

For TDV: `composite.<bat|sh> monitor start`

For BD: `bd.<bat|sh> monitor start`

In the `server.log`, verify that the version is the target version you intended.

13. You have to manually un-deploy a few adapters and re-deploy them due to the Java version changes in earlier TDV versions. Follow these steps to do that:

i. Undeploy the ComputeDB, ApacheDrill and TibcoStreaming adapter using the following commands

```
bin/server_util.sh -server localhost -port 9400 -user admin
-password admin1 -domain composite -undeploy -name
ComputeDB -version 1 -verbose
```

```
bin/server_util.sh -server localhost -port 9400 -user admin
-password admin1 -domain composite -undeploy -name
ApacheDrill -version 1 -verbose
```

```
bin/server_util.sh -server localhost -port 9400 -user admin
-password admin1 -domain composite -undeploy -name
TibcoStreaming -version 1 -verbose
```

ii. Redploy ComputeDB, ApacheDrill and TibcoStreaming adapter using following commands.

```
bin/server_util.sh -server localhost -port 9400 -user admin
-password admin1 -domain composite -deploy -package
packages/archived_ds_adapters/dst-drill-8.7.0-080700001.jar
-verbose
```

```
bin/server_util.sh -server localhost -port 9400 -user admin
-password admin1 -domain composite -deploy -package
packages/archived_ds_adapters/dst-computedb-8.7.0-
080700001.jar -verbose
```

```
bin/server_util.sh -server localhost -port 9400 -user admin
-password admin1 -domain composite -deploy -package
```

```
packages/archived_ds_adapters/dst-streambase-8.7.0-080700001.jar -verbose
```

14. Restart the Monitor.
15. Import backup CAR files as needed.
16. Optionally, redefine all your VCS roots and connections.

Verifying your Repository Version

TDV 8.8 has a new repository version. Whenever you downgrade to a different repository version, it is recommended that you verify that the repository version matches to the TDV version that you have downgraded to. To do this verification, run the following command:

```
./repository/bin/psql -Uroot -hlocalhost -p9408 -d cisrepo -c "select * from cisrepo.metadata_version"
```

The following table lists the TDV/BD versions and the corresponding repository versions.

Release Version	TDV Server	BD
8.3	32	30
8.4	33	30
8.5	34	30
8.6	34	30
8.7	35	30
8.8	36	30

New in 8.8

The TIBCO® Data Virtualization (TDV) 8.8 release has three distribution types. One is for on-premises installations that utilize our platform specific installer binaries or patch archives. The second is for container and Kubernetes runtime environments that use our container distribution (i.e. Docker files and Helm charts). The container distribution can be used in private and public cloud environments (for example, Azure). The third is our AWS Marketplace offering for those that don't want to manage nor host a TDV installation. For more information on the products and components included in TDV, refer to the TDV Installation and Upgrade Guide. For more information on the products and components in Business Directory, refer to the TDV Business Directory Guide.

TDV 8.8 is a Long Term Support Release. For information about the TDV LTS Support refer to [TIBCO Data Virtualization Long-Term Support \(LTS\) Releases](#).

TDV 8.8 includes features and enhancements in the following areas.

- [Web-UI Enhancements](#)
- [New in 8.8](#)
- [Query Engine Enhancements](#)
- [Security Enhancements](#)
- [Studio Enhancements](#)
- [Supported Platforms](#)
- [Miscellaneous](#)

Web-UI Enhancements

- Improved User Experience
 - Updated Filter Node's design to be more intuitive and user friendly
- Undo/Redo Flow Changes
 - Users can undo or redo the changes to the flow with the provided buttons or through keystrokes.

Adapter Enhancements

- Added support for Dynamic Relational DataSource Configuration
 - A callback TDV procedure, that is implemented in SQL Script or as a custom Java procedure (CJP) and owned by TDV administrators, can be registered with a relational data source to apply runtime customizations to the data source properties configuration before a connection is used by the TDV server to establish a new session with the data source. All customizations are transient. Their scope is limited to the specification of the JDBC properties to be used by data source connections.
 - As an example, an administrator could define a SQL Script procedure that determines the user associated with an incoming request accessing a relational data source and use TDV domain specific language (DSL) statements to adjust its JDBC connection properties to reflect what type of access - ReadWrite or ReadOnly - should apply to the data source connection used by the user request.
- Vertica - text index
 - Added support to create and drop text index in Vertica driver
 - The source table on which the index is to be created must have a primary key and an associated projection. It must also be both sorted and segmented by the primary key
- File System Adapters Date Inference - File System Adapters such as LFS, S3, Azure Data Lake, and GCS now infer the data type of file columns carrying date values as DATE.

Query Engine Enhancements

- Introduced new functions WEEKNUM, BYTE_SUBSTR, SUBSTR, CONVERT_TO and CONVERT_FROM
 - CONVERT_TO and CONVERT_FROM are supported only for Postgres

Security Enhancements

- Enhanced OAuth2 support for REST Adapter for fetching Access Tokens

- Support for Opaque OAuth Tokens
 - This enhancement introduces supports consuming the opaque OAuth tokens for JDBC, ODBC, and ADO.NET drivers
- Enhanced AzureAD as IdP
- Improved Log Out experience for OAuth logins

Studio Enhancements

- Review CDATA adapter version in Studio
 - The adapter version for CDATA Adapters can now be viewed in the Info Panel of the CDATA Adapters in Studio.
- Multi-table cache table privilege inheritance
 - A checkbox to “Copy Privileges from parent folder” has been added to the cache table creation panel.

Miscellaneous

- Support for XQuery 3.1
 - XQuery 3.1 introduces support for consuming JSON data and supports maps & arrays.
- Language Selection during Login
 - Users can now select the language (default English) while logging in through Studio, WebUI, Manager, Deployment Manager, and Business Directory
- Upgrade to Java 17
 - This version of the product uses Java 17
- Upgrade to PostgreSQL 14
 - This version of the product uses PostgreSQL 14
- Kubernetes Deployment to use micro-services
 - Kubernetes deployment has been refactored to use separate containers for TDV server, cache and repository

Supported Platforms

For the complete list of supported platforms, refer to the Installation and Upgrade Guide.

This release adds support for -

- Oracle Enterprise Linux 8
- Oracle Enterprise Linux 9
- Red Hat Enterprise Linux 8
- Red Hat Enterprise Linux 9
- Rocky Linux 8
- AlmaLinux 8
- SUSE Linux Enterprise Server 15
- IBM AIX 7.3
- Windows 11
- Ubuntu 22 (Docker and Kubernetes Distribution)
- Microsoft Windows Server 2022

Dropped support for:

- Microsoft Windows Server 2012
- IBM AIX 7.1
- Oracle Enterprise Linux 6

TDV and Business Directory 8.8 Fixed Issues

The following issues are fixed in this Service Pack of TIBCO® Data Virtualization.

Key	Summary
CIS-91913	Support for WITH clause has been added to the Amazon Redshift datasource.
CIS-92186	Fixed driverConfig to avoided spurious checks that resulted in issues when calling -configDsn and -installDriver at the same time.
CIS-93260	An exception like "Cannot register URI http://www.w3.org/2007/05/xmlsig-more#ripemd160-rsa-MGF1 to class" was occasionally seen in the server log. This has been fixed in the new JDK update.
CIS-95434	Sensitive information like clear text passwords that were logged by the Kerberos Debug out will be masked. This is relevant when the server configuration "Debug Output Kerberos Authentication Enabled" is set to true.
CIS-95540	When Pulling in the csjdbc.jar file's dependency via maven to build a project, an error was encountered as a parent POM dependency was not available in the build. This has been fixed.
CIS-95615	The visual design of the Filter node has been modified for better usability.
CIS-96745	TDV Studio was hanging when testing connection for an Azure Data Lake datasource with an incorrect url. This has been fixed.
CIS-96776	You will now be able to execute a dropSchema command without having to explicitly provide the versioned drop schema script in the command.
CIS-97608	Privileges of data source resources were getting modified when new tables were added using multi-table caching option. This causes the permissions

(Continued)

Key	Summary
	on the cache database to be revoked. This issue has been fixed. A new check box <i>Copy privileges from parent container</i> has been added in the DDL dialog. If selected, privileges can be inherited from the parent container (data source or schema) under which the multi-table cache is created.
CIS-99480	Claim name containing "/" was not honored by the hasClaim and getClaim procedures. This has been fixed.
CIS-99550	TDV now supports XQuery 3.1.
CIS-100753	Unable to manually update an existing CJP datasource Url or CLASSPATH. This has been fixed. Users can now use the browse button to fill the url. The Url cannot be manually edited anymore to avoid saving encoded characters such as space in the url string.
CIS-101320	Fixed HBase adapter issue affecting data fetch performance.
CIS-101351	DOC: Documentation has been updated to include clarification and a new illustration to explain the Switch feature in the Transformations in TDV.
CIS-101485	DOC: Fixed the incorrect url link provided in the instructions given in the section " <i>Connecting Tableau to TDV Using ODBC</i> ".
CIS-101542	Fixed unnecessary sql execution when sql plan has a shared plan.
CIS-102720/CIS-105988	DOC: The jars listed in the Hive adapter guide has been updated.
CIS-103216	DOC: The Datadirect Mainframe adapter guide has been updated with the latest driver information.
CIS-103568	Undo/Redo support has been added to the Web UI Flow Editor.
CIS-103598	DOC: The description for the AlternateSecurityCredentials property in the TDV drivers has been updated for more clarity.

(Continued)

Key	Summary
CIS-103645	HTTP “Host” header injection security vulnerability is fixed in WebUI. Any malicious “Host” header manipulation is now detected by TDV server and the corresponding HTTP request is rejected with HTTP response “400 Bad Request”. To enable this feature TDV server should be configured with proper “Allowed Hosts” setting (Configuration -> Security -> Allowed Hosts).
CIS-103870	TO_TIMESTAMP function in Postgres adapter now honors number datatype attribute.
CIS-103871	If there were any custom functions created by the user in their TDV environment, those custom functions were getting unchecked after performing an in-place upgrade. This has been fixed.
CIS-104552	TDV now supports SUBSTRB function.
CIS-104628	Added support for Opaque OAuth Tokens.
CIS-104737	LISTAGG() aggregate function is not being pushed down to the datasource level while using DB2.
CIS-104793	A particular user that had no READ privileges on data sources was able to select data due to insufficient checks on the metadata type. This has been fixed.
CIS-104932	Postgres adapter now supports functions CONVERT_FROM and CONVERT_TO.
CIS-104969	TDV 8.8 Docker and Kubernetes images now use Ubuntu 22 as the base OS.
CIS-105026	When creating an Azure domain in the TDV Web Manager, the Edit External Groups button did not display all groups available in Azure. This has been fixed.
CIS-105040	When using Package Import utility doing a Full Server Backup, the relocate or set options were not honored causing the file storage data sources to be skipped or fail. This has been fixed.

(Continued)

Key	Summary
CIS-105273	Fixed function EXTRACTWEEK that was failing when week was 53.
CIS-105305	TDV now supports the function WEEKNUM
CIS-105436	DOC Update: The location of the cs_repository log file was incorrect. This has been fixed.
CIS-105459	Fixed an API Exception when calling published web services.
CIS-105666	After making successful connection to the ODBC driver and before Allocating Statement handle if Session gets timed out, the ODBC api call to SQLAllocHandle failed. This has been fixed.
CIS-105728/CIS-105960	Download Help link was not working in the online help page. This has been fixed.
CIS-105743	TDV unable to fetch Access Token with REST adapter OAuth2.0. This has been fixed.
CIS-105749	The unit displayed in "Studio Server Configuration" was incorrect. It is now fixed and unit now displayed is MiB.
CIS-105782	When a trigger on a TDV resource with special characters (for example, ':') in their name creates a csv file on Windows filesystem, the file will not be created successfully because of the OS restrictions. This has been fixed in the TDV server by normalizing the file name before the temporary csv file is created by the trigger. All the special characters in the filename will be changed to underscore before the temporary file is created.
CIS-105859	Introspection with Snowflake data source throws error "Comparison method violates its general contract". This has been fixed.
CIS-105863	Performance issues with Postgres process in the server with an INSERT flag running at 100% cpu usage in one of the nodes has been fixed.

(Continued)

Key	Summary
CIS-105868	The error message that is displayed when table catalog/table schema information has been modified to add more information. After a datasource (that is used as a cached datasource) is introspected, if it contains a catalog, "table catalog" will be required and if it contains schema, then "table schema" will be required.
CIS-105885	DOC Update: The introspectResourcesTask API has been updated to include support for "ADD_OR_UPDATE_RECURSIVELY".
CIS-105905	DOC: The default ODATA Max Page Size value has been corrected from 10,000 to 100,000 rows.
CIS-105960	DOC: TDV 8.7 Download Help from Studio returned "404 Page not found" due to a malformed URL. This has been fixed.
CIS-105993	<p>For customers using linux based TDV Server 8.7 that are moving to this service pack:</p> <p>After you apply the 8.8 service pack, please check that there are no running processes named "check_bd_out_file_and_relink.sh" and "check_cis_out_file_and_relink.sh". If you see such processes then please terminate them using the command:</p> <pre data-bbox="440 1203 1414 1287">kill -9 <process id></pre> <p>Example to find such processes:</p> <pre data-bbox="440 1371 1414 1518">ps -ef grep "check_bd_out_file_and_relink.sh" ps -ef grep "check_cis_out_file_and_relink.sh"</pre>
CIS-105994	Web UI help was incorrectly pointing to different version. This has been fixed.
CIS-106035	Resource mappings were saved with empty strings in Deployment Manager. This caused unexpected behavior when opened again. This has been fixed.

(Continued)

Key	Summary
CIS-106047	Postgres process in the server with an INSERT flag was running at 100% cpu usage in one of the nodes in the cluster. This has been fixed.
CIS-106064	UTF8 encoding has been fixed in TDV jdbc/odbc/ado.net drivers
CIS-106074/CIS-106075	Correct JSON responses will be generated when published resources with different data types are accessed from client tools.
CIS-106078	Locale/Code Page parameter mentioned on the ODBC driver's configuration pagewas not visible. This has been fixed.
CIS-106133	DOC Update: Syntax of the DATEADD Function is incorrect in Reference Guide. This has been fixed.
CIS-106154	Apache Commons library has been updated to fix Security issues that existed in earlier versions. It has been removed from Web Manager since it was no longer used.
CIS-106166	SMTP email trigger failed when using port 25/587. This has been fixed.
CIS-106178	Version check logic has been updated in all TDV docker, docker_k8s and k8s scripts to handle newer versions of docker, kubectl and helm so that a later version of Helm (than 3.4) is honored.
CIS-106218	Using the TDV ODBC driver, when a Prepared statement is used to insert into a table with a primary key specified by connecting with ODBC Client, an error occurs when using SQLBindParameter. This has been fixed.
CIS-106235	Packaged query failed against the snowflake adapter when using the WHERE clause in it. This issues has be been fixed and a new Snowflake adapter is included with this release.
CIS-106262	The error messages for invalid login from server have been normalized.
CIS-106269	WebUI: Autocomplete has been set to off for user/password fields in Web UI.

(Continued)

Key	Summary
	Note: If the browser honors it, then the user will not have the ability to auto fill the user/password fields. If the browser doesn't honor TDV settings, then the user could auto fill the user/password fields from the browser's stored passwords
CIS-106325	Syntax highlighting issues in TDV scratchpad has been fixed.
CIS-106354	Data Source Toolkit (DST) adapters, including CDATA adapters, can be replaced with another adapter version - i.e. be un-deployed and redeployed - without having to restart the TDV server. Requests should not be run against data sources controlled by the adapter during the adapter replacement process.
CIS-106356	Unable to enter username with only numeral character in row-based security. This has been fixed.
CIS-106395	When containing custom data types, SQL Server Table introspection failed. This has been fixed.
CIS-106460	A normalized JSON response is now provided whether the published web service response has one or more trigger owners.
CIS-106461	DOC Update: KPI Metrics table had incorrect VARCHAR definitions for the Metrics tables in Oracle data source. This has been fixed.
CIS-106462	DOC Update: The field in the EncryptElement library called "keystoreAlias" was incorrectly specified as "certificateAlias". This has been fixed.
CIS-106543	Syntax highlighting for keywords was not working as expected when used inside brackets. This has been fixed.
CIS-106573	Fixed the ability to restore resource mappings from a DM backup car file.
CIS-106596	Functionality has been added to handle special-case characters if they are present in the SAP data source table DD02T.

(Continued)

Key	Summary
CIS-106629	The DATETIME data type returned from a Sybase data source was displayed as received without adjusting the precision. This is now fixed and the returned value is now trimmed to show only 3 numbers in nanoseconds for better user-friendly consumption.
CIS-106631	Removed unnecessary parameters that caused a connection exception in some Hive versions.
CIS-106680	"Unable to parse SQL script: Incorrect syntax" error displayed for functions SUBSTR, SUBSTRB, SUBSTRING, DECFLOAT and REPEAT. This has been fixed.
CIS-106682	A Write failed error is displayed when modifying a committed VCS GitHub resource and committing it again. This error message has been modified to provide more information that will be useful.
CIS-106694	Fixed TDV studio handling of setting the parameter 'delegateOauth2flowToServer' to true when logging into TDV Studio using OAuth0 domain. This will facilitate using JDBC driver to access the datasources.
CIS-106781	The following error was displayed when using IsNumeric function and then CAST. This was due to the IsNumeric return true for empty value input and then the CAST being sent an empty value. <code>Data conversion exception - invalid character value to cast '' as 'FLOAT'. [func-3953120] [Log ID: 1dda3b6d-8045-4fd5-80ba-fc27adc4f0a3]</code> . This has been fixed.
CIS-106785	Web UI now uses the domain name configured within the TDV server instead of the domain name entered by the end-user in the login screen. This resolves a bug where CASE sensitive queries can cause errors within Web UI when domain name is not in a match CASE.
CIS-106907	DOC: GROUP_CONCAT function syntax and examples have been updated.
CIS-106959	Query execution in Amazon S3 data source was switched to classic engine,

(Continued)

Key	Summary
	even though it was explicitly set to use the Parallel Processing engine. This has been fixed.
CIS-106974	Web UI: Some flows were not displayed in the 'Overview' tab and the 'Data Workbench' tab based on the 'case sensitive' settings. This has been fixed.
CIS-107012	A java.lang.ClassCastException error was encountered when saving an LDAP data source. This has been fixed.
CIS-107025	WebUI: When Accessing TDV via HTTPS, an error was encountered and content was not displayed. This has been fixed.
CIS-107078	RapidSQL crashed while retrieving NULL data from the TDV server using the Windows ODBC driver. This has been fixed.
CIS-107082	Single quoted string literals were not recognized in Studio editor. This has been fixed.
CIS-107127	Fixed issue with JSON_TABLE sql operator.
CIS-107205	Snowflake procedure with datatype as "TIMESTAMP_NTZ" did not execute. This has been fixed.
CIS-107224	When re-introspection or statistics collection is scheduled through the UI panels in Studio, each execution (i.e. introspection or collection) will occur at only one node at a time in a TDV cluster - instead of running at the same time on all cluster nodes. Multiple executions over a period of time will be assigned across all cluster nodes in a round-robin fashion.
CIS-107304	The file server_files.xml had incorrect path specified. This has been fixed.
CIS-107341	A new configuration has been added with the default value being True. The path to the configuration is Configuration -> Server -> Configuration -> Cache -> Encode special characters with "x" + character code. When True special characters will be replaced with the character "x" + char value; when FALSE, characters which are not Latin characters or numbers will be

(Continued)

Key	Summary
	replaced by underscore "_", including Japanese, French.
CIS-107374	Fixed the BufferedPipe thread leak issues that happen when join queries are interrupted in a cluster environment and the parent thread is terminated.
CIS-107417	Fixed JSON message encoding processor to handle values and their data types correctly when a published webservice response is obtained using a JSON url
CIS-107455	DOC: Updated documentation instructions to include defining the callback url while configuring VCS for Github OAuth authentication.
CIS-107507	Unable to save the changes for SAP, SAP BW, SAP BW BEX adapter properties. This has been fixed.
CIS-107657	GoogleAds adapter update will now support API v14.

Known Issues

The following issues exist in this release of TIBCO® Data Virtualization.

Key	Summary
CIS-91894	TDV queries run in the MPP engine and involving COUNT aggregates on top of joins that return no results, might return no rows instead of a single row with the value 0.
CIS-92451	When a car file is imported into Studio with VCS roots and connections, the existing resources in Studio that were not imported may show in TDV as checked-in. In this case, the user will have to detach and reattach using CIS as baseline to push resources to repository or Pull from remote repository to overwrite resources in studio.
CIS-92933	When you set the Studio configuration option "Cursor Fetch Limit" to over 4197 rows, there is a de-serialization error in Studio while saving the results to a .csv file.
CIS-93339	TDV does not support Bitbucket variant of Git Version Control System.
CIS-93537	In TDV Web UI, when the data types of the columns do not exactly match, you will not be able to assign them in the Union/Intersect/Except operators.
CIS-93868	After a memory setting change, contents in the Manager's Server Overview tab in TDV Studio does not get updated after restarting TDV Server. The workaround is to restart Studio or "Switch User" instead of re-authenticating.
CIS-94210	In TDV Web UI, a user with ASCII characters in the user name, cannot copy/rename a flow.

(Continued)

Key	Summary
CIS-94274	There are intermittent query optimization issues on data sources that do not support derived tables (for example, Informix).
CIS-94413	In TDV Web UI, if a flow is impacted for some reason (for example, due to an invalid filter operator) then such flows do not sometimes show the impact message.
CIS-94728	The Format Query button in the TDV Studio's SQL Script window does not format the query as expected and deletes the SQL definition.
CIS-94768	Discrepancies are seen in node statuses in a cluster after adding/removing a node when "Copy Repository Database For Cluster Join" is set to TRUE
CIS-95001	TDV Web UI does not support reintrospection of datasets for possible newly created indexes. To workaround this issue, remove the dataset and add it back in the Flow editor.
CIS-95293	<p>When the user wants to remove the SQL or Script, a NULL cannot be specified at this time to unset it. "--" can be set as a workaround, when SQL is to be unset. To unset the SCRIPT definition, use</p> <pre data-bbox="459 1150 743 1234">PROCEDURE script1() BEGIN END</pre> <p>as the value for "script" parameter, where "script1" is the name of the procedure that is being altered.</p>
CIS-95625	<p>When configuring UNION on the Model tab, the column information(meta data) for the added view is not loaded on the Grid tab. The Grid does not show any columns that are available. To workaround this issue, put the first table/view in the model before adding the UNION and then switch to the Grid tab and pull down the column information.</p> <p>This only needs to be performed once while creating the view. The column information will be available in the resource grid views after adding other resources, and there will be no exceptions</p>

(Continued)

Key	Summary
	thrown.
CIS-96087	If TDV has been upgraded from a prior version, the Published REST Web Service panel will show the base installed version instead of the current version.
CIS-96447	The default value for enableFlood is False in TDV Server as well as the clients drivers. Set it to True manually if you want to enable the functionality.
CIS-96701	PostgreSQL adapter cannot identify that a cursor/record type is being returned as the executed function's result. As a result, it cannot return a table as one of the output parameters.
CIS-96737	SSL handshake between the Excel client (version 2016 and 2019) and TDV which uses a self signed certificate for secure end points (i.e. https) displays a connection error message: "couldn't establish the trust relationship for the SSL/TSL secure channel".
CIS-97012	<p>For any site being added in Deployment Manager, if any changes are made and saved, then those changes disappear when user navigates to a different target site and back to the original site. This issue happens only with the 'Containers' tab for any data source under 'Resource Mappings'.</p> <p>To workaround this and see the change made, simply refresh the browser/click on the refresh icon in the DM.</p>
CIS-97272	Creating a single table cache in Singlestore with BLOB value(s), throws an "Invalid Datatype formatter" error.
CIS-97273	Refreshing the cache data after creating single table cache in Singlestore having CLOB value(s), results in an "incompatible type" error.
CIS-97946	Cloud File System adapters are currently not supported on Windows OS.

(Continued)

Key	Summary
CIS-97999	An exception "Internal error has occurred" is encountered when deleting records on published view with WHERE-IN clause.
CIS-98016	Execution of CTAS statements for a Cloud File System data source will throw an error in the Windows environment.
CIS-98163	<p>For any site being added in Deployment Manager, if any changes are made and saved, then those changes disappear when user navigates to a different target site and back to the original site. This issue happens only with the 'Containers' tab for any data source under 'Resource Mappings'.</p> <p>To workaround this and see the change made, simply refresh the browser/click on the refresh icon in the DM.</p>
CIS-98364	<p>TDV Web UI loads data in the Data Grid control a 100 rows at a time. This data stays in the grid until the buffer is full.</p> <p>However, if there are more rows of data beyond the buffer, all rows will not be exported. You may scroll until all rows are displayed and then try to export to csv file. This limitation will be address in a future enhancement in TDV Web UI.</p>
CIS-98442	If an adapter has QueryPassthrough=true enabled in the Other field, then only packaged queries will work for that data source.
CIS-98668	When the number zero is entered as the Minimum/Maximum value in the statistics gathering table, "0" is not displayed.
CIS-98707	The Manual Cardinality Override settings value can only accept 2147483647 as the maximum. This may sometime need to be greater than this value depending on the data volume and currently this value cannot be changed.
CIS-99672	When using Deployment Manager, Migrate Resources Operation to deploy artifacts containing a cache to another site, choosing the option "Caches for Existing Objects: Re-Create Cache Tables" may throw the following exception:

(Continued)

Key	Summary
	<pre> MESSAGE TYPE RuntimeError MESSAGE Cannot create target table(s) '/shared/examples/ds_ orders/tutorial/ViewSales_cache' for resource : '/shared/examples/ViewSales'. Detail Message: Unable to execute "CREATE TABLE "tutorial"."ViewSales_ cache" ("cachekey" integer NOT NULL, "ProductID" numeric(32, 0), "ProductName" varchar(32768), "CategoryID" numeric(32, 0), "CategoryName" varchar (32768), "ProductDescription" varchar(32768), "SerialNumber" varchar(32768), "UnitPrice" numeric (32, 6), "ReorderLevel" numeric(32, 0), "LeadTime" varchar(32768), "Status" varchar(50), "Discount" numeric(12, 2))" in data source "/shared/examples/ds_orders". SQL State = 42P07 SQL Error Code = 0 [data-3911071] - Cause: ERROR: relation "ViewSales_cache" already exists </pre>
CIS-99695	<p>When editing a flow that was created in Web UI from TDV Studio using the "Edit in Web UI option", you will be transferred to the Web UI login page and you need to login to the tool and then select the flow to edit.</p>
CIS-100571	<p>Launching Web Manager from Studio as okta user intermittently throws "Parse input argument error". Logout and log in again to workaround this issue.</p>
CIS-100732	<p>Removing claim in Web Manager intermittently throws error - Service failure: ServerError: An internal error occurred while processing the request. Cause: null [9901201].</p>
CIS-100753	<p>When updating the URL or classpath of an existing CJP datasource with paths containing spaces or "/" after file:, an error is thrown.</p>
CIS-100826	<p>Invalid OAuth domain configuration may throw an authentication error when logging into TDV applications.</p>

(Continued)

Key	Summary
CIS-100830	OAuth domain containing an "&" in the domain name throws an exception when used to login to TDV applications.
CIS-100866	When setting up an OAuth domain with a token created with the Auth0 IDP, any leading or trailing whitespaces in the fields "Audience url", "Authorization url", "Token url", "Client Id", "Issuer Value" should be deleted. If there are any leading or trailing whitespaces, TDV applications will throw an exception.
CIS-100874	TDV's OData V4 implementation does not currently support having spaces in published tables or procedures names.
CIS-101351	While transforming data using UNION, the UNION output prevents the CASE to give an integer result.
CIS-101378	When explicit privileges are given to a group "testgroup" in source site on a view (testgroup does not exist in target), the export plan that contains resource bundle and principal bundle and principal mappings from source to target does not export the explicit privileges to target.
CIS-101652	In PaaS environments, the WebUI displays endpoints with hostname as computer name and accessing such an endpoint will fail to work. If hostname in the endpoint URL is manually changed to machine name, then it will work.
CIS-102734	When using <code>/services/webservices/system/admin/user/operations/createGroup</code> to add a new group to Active Directory, the new group takes upto 30 minutes to be added.
CIS-103395	Inconsistencies are seen in the model panel when using the PUT method on the View that was created and edited in SQL tab.
CIS-103438	The 'group' column in KPI metrics is not populated.
CIS-104694/CIS-	Google Cloud Storage databases with file names containing spaces cannot

(Continued)

Key	Summary
104994	be introspected.
CIS-104712	When user edits the sql tab, the model is being destroyed. All the layout changes are deleted. Thus when doing the operation "Generate Model", the sql tab generates the tables/link from scratch.
CIS-104882	When there are multiple errors in the Monitor, the server will throw exception once it encountered the first error, and will not continue to save the rest.
CIS-104994	Google Cloud Storage adapter does not support files with white space in their name.
CIS-105043	Google Cloud Storage databases with Folder names containing spaces cannot be introspected.
CIS-105193	For Encrypted data source properties consistency, we would recommend customers to retype the secrets appear String type to be EncryptedString, and save the data source properties.
CIS-105247	Web UI will not display a table when the table name matches it's schema name. Workaround is to either change the table name or corresponding schema name in order for the the table to show in Web UI.
CIS-105625	Queries using WITH clauses that have references to cached resources and define table references that are used in the context of CASE statements might fallback to the classic engine while being processed by the MPP engine.
CIS-105703/ CIS-106259/	When a federated join query creates several JVM threads to execute and is interrupted (such as canceled), then the parent thread is terminated but the child threads would not be cleaned up (terminated). This causes the application to leak a couple of threads which remained active in the JVM process until the JVM process was restarted. Eventually, the error indicates that the Operating System could not allocate memory for a request to create a new thread.

(Continued)

Key	Summary
CIS-105878	When publishing a service as a webservice in TDV. If a user accesses the service using 3rd party tools with the wrong URL then TDV returns success code with no data.
CIS-106142	Keyboard shortcuts do not work as intended in TDV Studio in the Japanese version.
CIS-106145/106683	When using an OAuth Domain using the Azure authentication, you may encounter authentication errors when logging into the TDV Studio or other TDV apps. Change the value of the field <code>accessTokenAcceptedVersion</code> in the Manifest tab in the Azure Portal to 2 and try again.
CIS-106221	In TDV Studio, after switching from Japanese to english, some items are still showing in Japanese. The workaround is to restart Studio.
CIS-106240	Information about the Original owner of a resource is not stored in the system tables in TDV.
CIS-106294	When changing the input source to a filter node in the Web UI canvas, the Filter Operator node may not report an error of non-matching columns used in the Filter Operator node's filter clause.
CIS-106448	Packaged query on a RedShift data source fails when attempting to execute the "Copy" command.
CIS-106513	With wrong encryption password the import will fail with error, but data source jar files in the car file are still imported.
CIS-106640	Some URLs may or may not require a trailing slash ('/') depending on the oauth provider used.
CIS-106840	LastModifiedDate field is not updated in the ALL_RESOURCE_PROPERTIES table.

(Continued)

Key	Summary
CIS-106841	WebUI Canvas - auto scroll does not work. A workaround is to use the keyboard arrow keys to scroll the diagram to the desired location while dragging a node.
CIS-106929	DROP TABLE DDL command fails because of case sensitivity issues.
CIS-107015	Using a Snowflake data source, there is an issue with the find box (Search) in the introspection tab, where the previous search name continues to display, forcing you to manually clear the previous value every time you want to initiate a new search.
CIS-107057	Due to changes in the Twitter API and the service itself, the current Twitter adapter is no longer functional. A future adapter fix will be required to address this.
CIS-107100	When executing queries against SAP data source tables, an ArrayIndexOutOfBoundsException error is encountered.
CIS-107204	TDV restricts regular and multi-column IN clause result set to 1000 rows when pushing to Oracle and Oracle does not have any such restrictions for multi-column IN.
CIS-107219	Re-introspection may cause adapter jars to be transferred across cluster nodes.
CIS-107239	Wide queries (sum of projected column lengths exceeding the SAP read-table row length) against tables where the sum of all primary key lengths exceed the SAP read-table row length will fail with a DATA_BUFFER_EXCEEDED error.
CIS-107271	CTAS statement with UNION from a 3rd party tool via TDV results in incremental column names instead of DDL defined ones.
CIS-107292	When performing a dropSchema repo util command to drop the schema, all data in the schema will be deleted.

(Continued)

Key	Summary
	<p>To avoid this, in a patch install, the dropSchema must be done with the current versioned composite_clean script. Restarting server (composite.sh monitor start) will re-create the 8.4.1 schema automatically. There is no need to manually run "createSchema" repo util command.</p> <p>For example, to upgrade to 8.4.1 run dropSchema commnd as given below:</p> <pre data-bbox="500 625 1354 693">./bin/repo_util.sh -dropSchema -schemaDropScript conf/repository/postgresql/composite_clean-080401001.sql</pre> <p>The file composite_clean is suffixed with the latest version 841. Server needs to be up and running for invoking the dropSchema command.</p> <p>After this step, a <code>composite.sh monitor restart</code> is required in order to restart the server that will automatically create the latest 841 schema.</p>
CIS-107318	Table annotations are absent in WebUI for a published table whose base table is annotated.
CIS-107323	Table annotations are absent in Business Directory for a published table whose base table is annotated.
CIS-107360	Data source passwords containing double underscores, encounter 'Invalid Login' Errors.
CIS-107453	TDV Query Engine errors when encountering SQL with too many AND/OR predicates.
CIS-107530	Using TDV Snowflake adapter v22.0.8626, you will be unable to use WITH clause that contains string comparison in where clause.
CIS-107560	An introspection failure is encountered when introspecting a table that has been modified by deleting its columns in Greenplum data source.
CIS-107602	When downgrading from TDV 8.8 to Pre-8.8 version a few adapters does

(Continued)

Key	Summary
	not undeploy adapters in packages folder. Refer to the Rollback instructions.
CIS-107629	SSO related fields are not disabled when user launches TDV Studio using the Kerberos authentication. You need to check SSO again to workaround this issue.
CIS-107650	In Web UI, when you attempt to delete multiple flows (that were selected using the keystrokes), only the last selected flow will be deleted, instead of all selected flows.
CIS-107656	In Web UI, users will be allowed to click on the Select button when a parent folder (such as Tutorial) is selected from the list of datastores. However it will not select all the underlying tables into the canvas as one might expect. Open the parent resource and select the individual tables/views into your canvas.
CIS-107692	When viewing the catalog in the Web UI, if you click too quickly on resources in the left panel, you may see the results of a previous selection rather than the final selection in the middle panel.
CIS-107722	Japanese help does not show up when language is changed to Japanese in the Business Directory UI. In order to display the Japanese help, you need to manually change the url to point to the japanese help folder. For example: <code>https://<hostname>:9502/directory/help/ja/index.html</code>

Disabling the Drill Console

The TDV Server embeds Apache Drill to assist with the runtime for the MPP Engine. The Apache Drill console uses an older version of jQuery which has known security vulnerabilities. The Apache Drill console is not required for normal operation of TDV or its MPP capability. This console can safely be disabled by blocking access to it via OS configuration (for on-premise installations), Docker Container/Pod configuration, or Kubernetes Helm Chart. To disable the Drill Console follow these instructions below:

TDV Server (on-premises):

On operating system hosting TDV Server (Windows/Linux/AIX), change the firewall to not expose $(TDV_BASE_PORT - 100) + 3$.

Example: TDV Server installation on Linux using default $TDV_BASE_PORT=9400$.

Change firewalld or iptables to not allow inbound requests to port 9303.

TDV Server (docker) :

Modify TDV container/pod to not expose port $(TDV_BASE_PORT - 100) + 3$.

Example: Change the TDV Docker `run_tdv_container.sh` script to only allow external access to 9300-9302,9304-9306 using the content below.

Assumption: default $TDV_BASE_PORT=9400$. All previous ports will continue to be open except $(TDV_BASE_PORT - 100) + 3$.

Old content	New content
<pre>local H_DRILL_PORT_1=\$((H_DRILL_ BASE_PORT + 1)); local C_DRILL_PORT_ 1=\$((C_DRILL_BASE_PORT + 1))</pre>	<pre>local H_DRILL_PORT_2=\$((H_ DRILL_BASE_PORT + 2)); local C_ DRILL_PORT_2=\$((C_DRILL_BASE_ PORT + 2))</pre>
	<p><i>Add this new line</i></p> <pre>local H_DRILL_PORT_4=\$((H_ DRILL_BASE_PORT + 4)); local C_ DRILL_PORT_4=\$((C_DRILL_BASE_ PORT + 4))</pre>
<pre>CONTAINER_PORTS="-p \${H_BASE_PORT}- \${H_PORT_3}:\${C_BASE_PORT}-\${C_PORT_ 3} -p \$H_PORT_5:\$C_PORT_5 -p \$H_ PORT_9:\$C_PORT_9 -p \${H_DRILL_BASE_ PORT}-\${H_DRILL_PORT_2}:\${C_DRILL_ BASE_PORT}-\${C_DRILL_PORT_2} -p \${H_ DRILL_PORT_4}:\${C_DRILL_PORT_6}"</pre>	<pre>CONTAINER_PORTS="-p \${H_BASE_PORT}- \${H_PORT_3}:\${C_BASE_PORT}-\${C_PORT_ 3} -p \$H_PORT_5:\$C_PORT_5 -p \$H_ PORT_9:\$C_PORT_9 -p \${H_DRILL_BASE_ PORT}-\${H_DRILL_PORT_6}:\${C_DRILL_ BASE_PORT}-\${C_DRILL_PORT_6}"</pre>

Note: If you are not running the `run_tdv_container.sh` script that is provided with TDV, then you must manually exclude port 9303 when running the container using the **docker run** command. For example:

```
docker run -itd -v <volume>:<location> type=volume,source=tdv-
vol,target=/opt/TIBCO --cpus=2.000 -env [TDV_ADMIN_PASSWORD=<PASSWORD>]
[TDV_ADMIN_PASSWORD_FILE=<FILE with tdv admin password>] -m=8g -p
9300:9300 -p 9301:9301 -p 9302:9302 -p9304:9304 -p9305:9305 -p 9306:9306
-p 9400:9400 -p 9401:9401 -p 9402:9402 -p 9403:9403 --hostname=localhost
--name tdv myrepo/tdv:8.4 Dockerfile.tdv.repo
```

TDV Server Kubernetes:

Modify TDV helmchart to not expose port (TDV_BASE_PORT - 100) + 3.

Example: The content of the TDV helmchart should be changed to only allow external access to 9300-9302,9304-9306 as described in the table below.

Assumption: default TDV_BASE_PORT=9400. All previous ports will continue to be open except (TDV_BASE_PORT - 100) + 3.

tdv.yaml	tdv-svc.yaml
Remove the following content from the file <i>tdv/templates/tdv.yaml</i>	Remove the following content from the file <i>tdv/templates/tdv-svc.yaml</i>
<pre>- name: "p9303" containerPort: 9303</pre>	<pre>- port: 9303 name: "p9303" - port: 9303 nodePort: 31303 name: "p9303" - port: 9303 name: "p9303"</pre>

TDV and Business Directory 8.7 Fixed Issues

The following issues are fixed in this Service Pack of TIBCO® Data Virtualization.

Key	Summary
CIS-54055	DB2 tables of TYPE NICKNAME can now be introspected.
CIS-72734	After a drop & re-create of a TDV repository schema, the admin password does not get reset to the most recent password. This has been fixed.
CIS-73006	TDV's DECIMAL data type now supports arbitrary values. Datasources Oracle, Postgres, Teradata, Greenplum (fork of Postgres) support this arbitrary NUMERIC datatype.
CIS-87717	Unable to create Oracle EBS datasource during the Oracle EBS adapter. This has been fixed.
CIS-91810	Fixed the Oracle EBS datasource introspection issues.
CIS-93995	Support has been added for TO_NCHAR function
CIS-95475	The "re-introspect previously introspected resources" checkbox was checked and disabled for Greenplum datasource and therefore indexes created were lost. This option will now be in the active state for the Greenplum data source.
CIS-96008	When setting up a data source using the "Composite" adapter, Pass-through works only with the domain entered in the data source when it was first created. In all other domains it fails with an error "Unable to connect to pass-through credential data source". This has been fixed.
CIS-96599	Fixed issues in re-introspection of cache tables after they were created.
CIS-96669	Fixed XML/SQL encoding and decoding issue when importing a car file from a version control repository (VCS) into TDV server.

(Continued)

Key	Summary
CIS-96849	Keystore attached to soap datasource got corrupted intermittently. This has been fixed.
CIS-98139	When connecting to a SOAP data source, use the alias specified in the Advanced > Certificates section if it exists to allow SSL connections.
CIS-98286	REST datasource now supports content type "application/x-www-form-urlencoded" and grant_type "password".
CIS-98308	When connecting to Google contacts adapter, an "Invalid Table" exception was displayed. This has been fixed.
CIS-98744	When a GIT PUSH was executed, the GIT LOG displayed that it was ahead of origin by 1 commit, causing unexpected behavior. This has been fixed.
CIS-98751	When creating a CJP datasource , the URL generated by clicking on Browse and choosing a path containing space characters must be edited to change all "%20" characters to " " (space characters) before creating the datasource.
CIS-98912	NLS datatype mismatch encountered when the view had an attached RBS policy. This has been fixed.
CIS-99036	TDV Oracle adapter will now handle special character column size scenarios.
CIS-99146	Support for Connection KeepAlive functionality has been included to the JDBC driver.
CIS-99342	VCS can not be enabled in TDV 8.5 or higher if there has been an in-place upgrade of just the TDV Sever from TDV 8.x to TDV 8.5.0. On the windows platform only, if you are upgrading from a pre-8.5 TDV Server installation to TDV Server 8.5 or higher, you need to upgrade your TDV Studio to the same version you upgraded your TDV Server with.
CIS-99810	CREATE table failed on Amazon Redshift data source due to Double precision column type. This has been fixed.

(Continued)

Key	Summary
CIS-100037	Performance improvements have been done to the Query Engine Parser configuration.
CIS-100158	TDV SAP adapter now assumes non-deterministic ordering of RFC_READ_TABLE data. This fixes inconsistencies in the query execution result set.
CIS-100170	Fixed run_tdv_container.sh issue where the wrong network was used to start the container. Now we start the tdv container with the tdv-bridge network and then connect to the tdv-bridge-internal. If you override the network name, then accordingly we will use that first then connect to {new network name} - internal.
CIS-100609	Using a CosmosDB TDV adapter, flattening of a sub array within the JSON provided, was not working as expected. This has been fixed in the new CosmosDB adapter.
CIS-100669	Active Directory adapter has been updated to version 21.0.8133.0.
CIS-100674	When API call cbsGetPolicy was run, it returned an error "value may not be null". This has been fixed.
CIS-100675	There was a Memory leak noticed in TDV Studio when moving the columns up and down in the Grid tab of a view. This has been fixed.
CIS-100703	Nodes drop off the cluster as a result of inefficiencies with LEFT PARENTHESIS causing an infinite loop in PreparedParser. This has been fixed.
CIS-100731	EXTRACTVALUE and XML_EXTRACT functions are now supported for MySQL data source.
CIS-100736	Studio's sql editor's "Save To File" option saved incorrect results in the file. This has been fixed.
CIS-100779	When loading an Informix data source into TDV, in which tables contained an INT8 data type column, TDV remapped this data type to LONG. This has been fixed.

(Continued)

Key	Summary
CIS-100797/CIS-101947	JDBC ODBC bridge adapter throws an exception " column label not found"" when connecting to/Introspecting PostgreSQL datasource. This has been fixed.
CIS-100808	Fixed hanging issue in queries containing deeply nested WITH clauses.
CIS-100811	Fixed issue where cancelling of a query request can take abnormally long.
CIS-100812	Deployment Manager threw an exception when DEBUG was enabled and user.dir is not set. This has been fixed.
CIS-100817	When running a request to Google Spread Sheets, you may encounter the exception "User Rate Limit Exceeded. Rate of requests for user exceed configured project quota.". This has been fixed in GoogleSheets adapter version v21.0.8137.0 and later.
CIS-100864	After creating an LDAP domain of type Other, the Edit Domain panel showed "Active Directory". This has been fixed.
CIS-100886	WITH clause is not being pushed down to MySQL in TDV. This has been fixed. You need to modify the capabilities file (apps/dlm/cis_ds_mysql/conf/mysql_5_5.mysql.capabilities) to include the following: jdbcds.column_aliasing_in_with_clause: true Also modify the file apps/dlm/cis_ds_mysql/conf/mysql_5_5_config_defs.xml and change the defaultValue to "true". This will Push down the WITH clause to the underlying data source MySQL.
CIS-100999	Division between two integers resulted in an INTEGER. This has been fixed. The following configuration setting has been added. Administration -> Configurator -> Server -> SQL Engine -> SQL Language -> Numeric Division. Default value is False.
CIS-101029	Fixed use case involving non standard identifiers belonging to a WITH clause. Identifiers normally follow the following regular expression a-zA-Z0-9_.\$#
CIS-101031	The configuration file wrapper.conf is no longer available in TDV. The size of the monitor.out file is now controlled by the log4j.properties file that is

(Continued)

Key	Summary
	available in the locations: <TDV_Install_Dir>/conf/monitor/ and <TDV_Install_Dir>/bd/conf/monitor/
CIS-101094	When a Principal Bundle is deployed, the "all" group was not replicated to the Target. This caused users to lose privileges on resources located under "/services". This issue has been fixed.
CIS-101095	"Client Warning" option has been disabled for the "Request Lifetime Limit" rule in Workload Management as it is not relevant.
CIS-101170	When executing queries with nested WITH clauses, the following error was encountered: The request has been closed. No operations can be performed using it".
CIS-101201	Cassandra adapter has been updated to version 21.0.8160.
CIS-101227	When using the DATE_TRUNC function in TDV against Oracle, it failed with the below error: Cause: ORA-01821: date format not recognized
CIS-101229	Web Manager unable to change the language to japanese even if the browser and localisation is set to Japan. This has been fixed.
CIS-101237	Exporting a Full Server Backup failed with an decryption error: This has been fixed.
CIS-101244	Amazon Redshift adapter has been updated to version 21.0.8180.
CIS-101317	Executing queries with WITH clause failed intermittently with cursor closed error.
CIS-101323	Fixed the driver link in the Informix Adapter Guide.
CIS-101352	Fixed VCS issue with commit folder names having umlaut characters.
CIS-101440	The AWS GovCloud endpoints were not listed in the 'End Point Region' field of

(Continued)

Key	Summary
	the data source. This has been fixed.
CIS-101456	<p>TDV installs vcredist 2015-2019 that is required for postgres, if user already has it installed, it uses it to initialize postgres. An error occurs if user has 2015-2022 vcrdist installed and TDV tries to install 2015-2019. This has been fixed. TDV now checks if user has 2015-2019 or 2015-2022 and bypasses installation of vcredist and uses what is in the users machine to initialize postgres.</p> <p>When applying a patch, you must make sure that vcredist 2015-2022 is uninstalled before applying patch, otherwise there will be an error.</p>
CIS-101486	"Client ID" field is missing for Azure domain in TDV 8.6. This has been fixed.
CIS-101546	Upgrading from TDV 8.3 to 8.5.0 failed with CREATE INDEX error "string too long". This has been fixed.
CIS-101674	Password could not be updated for an existing Azure Domain. This has been fixed.
CIS-101750	ADO.Net logger performance has been improved.
CIS-101799	Introspecting for resources using Snowflake adapter skipped the Stored Procedures. This has been fixed/
CIS-101816	TDV now supports PostgreSQL Adapter versions 12, 13 and 14.
CIS-101827	<p>An error was encountered connecting to Salesforce.com adapter in 8.6 - Cause: org/apache/axis/AxisFault</p> <p>This has been fixed.</p>
CIS-101858	DOC Update: The list of Supported Add-on adapters in the Installation guide has been updated to not list the Active Cluster.
CIS-101879	Unable to introspect SOAP data source using the default REST TDV connector. This has been fixed.

(Continued)

Key	Summary
CIS-101900	TDV Postgres Adapter version 10 and up now supports DATE_PART() function.
CIS-101928	Adapter properties gets printed in the log file as SET statements. This has been fixed. These unnecessary properties will not be displayed anymore in the log file if not explicitly set by the user in the adapter -> advanced tab -> "JDBC connection properties".
CIS-102127/CIS-102262	Composite group User cannot 'Load Data' in Business Directory. This has been fixed.
CIS-102267	TDV REST Adapter now supports introspection of OpenAPI documentation.
CIS-102343	When a Double-Byte character (for example, a Japanese character) is contained in a table column name, it was replaced by an underscore while creating the cache table in the DDL script. This has been fixed to allow such characters.
CIS-102388	401 Unauthorized error encountered when accessing an Azure Domain in the Web Manager on the Row-Based Security page when the user name contains '@' character. This has been fixed.
CIS-102421	When connecting to TDV ADO.NET driver 8.6.1 with NTLM authentication, it failed with an exception "Session is invalid". This has been fixed.
CIS-102441	When trying to get an Access Token using the Refresh Token using TDV REST adapter, it failed with the below error: OAuth flow failed, no parameter "access_token" found in response. This has been fixed.
CIS-102458/CIS-102580	Memory utilization issue observed with CacheFramework ASAssets utilities. This has been fixed.
CIS-102471	Fixed an internal defect that prevents using cache in Vertica data source.
CIS-102478	Email Adapter v22 has been included to fix Japanese language specific issues.

(Continued)

Key	Summary
CIS-102482	After setting the memory limit on the workload management to a certain number the first time (Example: 25%), even after updating the percentage to a different number (Example: 70%) on the workload management page, the query is still being limited at the previous set percentage (Example: 25%). This is because the previous value is still cached and is limiting the query execution. This issue has been fixed.
CIS-102488/CIS-102659	Updated docker and docker_k8s images to use updated Eclipse Temurin JDK distribution.
CIS-102520	When introspecting a file-based data source using .xls files, new files were not detected when they were added to the same directory as the original one. This has been fixed.
CIS-102558	After publishing a web REST API using the POST method, the binding location is set as "Query" in the TDV generated swagger content, even though the input variables have been bound to "ENTITY". This is now fixed.
CIS-102600	When TDV Studio language is set to Japanese, the arguments displayed in the CAST function dialog was incorrect. This has been fixed.
CIS-102619	TDV now supports Google Cloud Storage Adapter as a Cloud File System Adapter.
CIS-102620	<p>The existing customers could experience OAuth login issue on some TDV apps (Studio, Manager, WebUI) with an unknown error. The TDV server would have returned 413 code response for the login attempt. If that's the case, we should increase the header size in order to read the larger tokens used by an IDP like Azure. These options can be found in the Server configuration:</p> <p>Server > Web Services > Communications > HTTP > Header Buffer Size (On Server Restart)</p> <p>Server > Web Services > Communications > HTTPS > Header Buffer Size (On Server Restart)</p> <p>Once this is changed, restart the server.</p>

(Continued)

Key	Summary
CIS-102635	Message body was garbled when an email containing Japanese strings in the subject and message body gets sent from a TDV trigger. This has been fixed.
CIS-102654	New select option NO_DATA_CACHE_IMMEDIATE has been added to disable caching for immediate views only. It does not affect sub views.
CIS-102675	TDV now supports the field Scope when creating an OAuth domain. Microsoft Azure requires to have "application ID URI" in front of the scope values (ie. prefix api://...). This will enable TDV to receive a valid access token that has a valid issuer value.
CIS-102686	Using a SAP data source, executing the SELECT statement on a table failed when using IS NOT NULL in a WHERE clause. This has been fixed.
CIS-102689	DOC Update: Erroneous date handling content has been updated for the SAP Adapter.
CIS-102732	TDV now supports Splunk adapter version 22.0.8327.0.
CIS-102735	In certain circumstances, the logs may be flooded with these error messages. This has been fixed. ERROR [DBChannel-37] 2022-10-24 11:02:38.702 -0500 IsNumberFunction - java.lang.Exception: null at com.compositesw.cdms.function.conditional.IsNumericFunction.compute (IsNumericFunction.java:31) [csserver-080502002.jar:?].
CIS-102743/CIS-103319	Setting 'Write Timeout Window' to zero can cause a deadlock when using SSL. This has been fixed.
CIS-102807	DOC Update: Connection properties section in MS Access Adapter guide was fixed.
CIS-102816	A hardcoded error message "support@compositesw.com" in MemberCache has been updated.
CIS-102841	Updated TDV ODBC windows/linux drivers to use openssl 3.0.7 for CVE-2022-

(Continued)

Key	Summary
	3786 and CVE-2022-3602.
CIS-102884	TDV SQL Server now supports the convert function TO_CHAR.
CIS-102888	TDV drivers JDBC/ODBC/ADO.Net now supports OAuth Token (headless flow). A new configuration parameter delegateOauth2flowToServer has been added.
CIS-102934	Multiple Workload Management Rules can be defined for User Requests. A rule action is triggered when the user request satisfies a rule. All rules except the EXCEPTION can be invoked many times within the life cycle of request. The EXCEPTION rule however, terminates the request by throwing an exception that has been defined.
CIS-102954	When re-introspecting multiple datasources at same time (using pkg_import.sh or schedule to re-introspect), incorrect capabilities file usage resulted in some columns to be defined as OTHER. This has been fixed.
CIS-102998	Nested procedures with PATH usage gave a null point error. This has been fixed.
CIS-103001	TDV now allows pushing UNION ALL with TEXT and NTEXT data type in MSSQL data source.
CIS-103025	When running SAP ABAP queries, the columns are returned with NULL values even though there are valid values. This has been fixed.
CIS-103211	Support has been added for new SELECT option *NO_DATA_CACHE_IMMEDIATE". Setting this option disables caching for immediate views only. It does not affect sub views.
CIS-103233	Third-party applications accessing a TDV web service receive an error "No 'Access-Control-Allow-Origin' header is present on the requested resource. This has been fixed.
CIS-103321/CIS-	MERGE INTO statement in SQL Server DB always defaults to bucket 0 in a multicache table.

(Continued)

Key	Summary
103310/CIS-103803	
CIS-103423	TDV Studio when switching from a multi-display environment to a single display environment may not appear on the single monitor environment's screen. Studio may remain in off-screen coordinates. Workaround is to move the TDV Studio onto the main screen/monitor by hovering over the TDV Studio running icon on the Windows taskbar. Right click on the TDV Studio snapshot image to bring up a context-menu and select "Move". Then either hold down the right mouse and drag the mouse pointer (while holding down the right mouse button) until TDV Studio is on the main screen or tap the left, right ,up, down arrow keys until TDV Studio is on the main screen.
CIS-103452	For Encrypted data source properties consistency, it is recommended that you retype the secrets that appear String type to be EncryptedString, and save the data source properties.
CIS-103453	Executing a LISTAGG function in a query with PARTITION BY clause failed. This has been fixed.
CIS-103500	The visual presentation of the information displayed in the Execution Query Plan in TDV Studio has been improved for better readability.
CIS-103567	Web UI Expression editor now has template support for CASE statements.
CIS-103801	SQL Server table introspection failed if it contained custom data types. This has been fixed.
CIS-103803	New SELECT option NO_DATA_CACHE_IMMEDIATE has been included. This disables caching for immediate views only. It does not affect sub views.
CIS-103818	<p>TDV HSQLDB 2.2 adapter + hsqldb 2.2.9 driver jar : works for HSQLDB 2.2 up to 2.4 (not including 2.4) TDV HSQLDB 2.2 adapter + hsqldb 2.7.1 driver jar : works for HSQLDB 2.4 up to 2.7.1</p> <p>TDV 8.5+ releases currently provide hsqldb 2.2.9 driver with our HSQLDB 2.2 adapter.</p>

(Continued)

Key	Summary
	<p>Please use the hsqldb 2.7.1 (Java 11+) or higher driver jar if you want to connect to HSQLDB 2.4 or higher. Example:</p> <ol style="list-style-type: none"> 1. Download for hsqldb 2.7.1 driver : https://sourceforge.net/projects/hsqldb/files/hsqldb/hsqldb_2_7/hsqldb-2.7.1.zip/download 2. Extract: hsqldb/lib/hsqldb.jar from zip file. <p>Note: TDV requires the driver to work with Java 11 or higher (i.e. do not use hsqldb-jdk8.jar).</p> <ol style="list-style-type: none"> 3. Stop TDV Server. 4. Replace <TDV_INSTALL_DIR>/apps/dlm/cis_ds_hsqldb/lib/hsqldb-2.2.9.jar with jar from step 2. 5. Restart TDV Server.
CIS-103852	<p>XML serialization of TDV-collected min and max character values may result in invalid XML comments. It prevents nodes from joining a cluster that has collected such stats as stats propagation fails. This has been fixed.</p>
CIS-103890	<p>DOC Update: Clarified the documentation support for Apache Impala 2.x as cache target.</p>
CIS-104103	<p>When connecting to Cloudera Impala 2.7 adapter and execute queries, unnecessary SET statements are displayed in the log. This has been fixed.</p>
CIS-104160	<p>The cs.monitor.out file can grow unbounded until the TDV server and monitor are restarted. Certain LDAP login failures can cause the file to grow very large and fill up the drive. To avoid this issue, statements similar to this have been removed from the cs.monitor.out file.</p> <pre>DEBUG: org.springframework.ldap.pool.validation.DefaultDirContextValidator - DirContext 'javax.naming.ldap.InitialLdapContext@7cb31f1f' passed validation. javax.naming.AuthenticationException:</pre>

(Continued)

Key	Summary
	[LDAP: error code 49 - Invalid Credentials]
CIS-104175	<p>When logging into Web Manager to an OAuth2 (Auth0) domain, you may encounter an error "Authentication Error: PKIX path building failed: sun.security.provider.certpath.SunCertPathBuilderException: unable to find valid certification path to requested target"</p> <p>This happens when it cannot find right certificate from the truststore and Java's built-in one. To resolve this follow these steps:</p> <ol style="list-style-type: none"> 1. Generate the certificates bases on the "domain name" in Auth0. (You can locate this in Auth0 application setting) 2. Run this "openssl s_client -showcerts -connect <domain name:443>" 3. Copy the section of each cert and name them as ie A1.crt.....A4.crt (There should be 4 cert files) 4. Run keytool -importcert -keystore cis_server_truststore.jks -file A1.crt -alias "A1A" (you will need to run this 4 times since you have 4 files) Please note, you will be prompt for password use "changeit" and confirm the change 5. Restart the server and Login to Manager.
CIS-104182	Silent Install of TDV ADO .Net Data Provider v 22.0.8370 does not install the driver. This has been fixed.
CIS-104195	TDV ADO.Net driver login failed when the password contained semicolon in it. This has been fixed.
CIS-104220	Using a TDV REST adapter, an error is encountered while sending POST Request with a body parameter.
CIS-104415	INTERVAL capabilities has been corrected for Apache Hive 2 Datasource.
CIS-104444	Using a DROP TABLE statement in MS SQL Server cache_status/cache_tracking

(Continued)

Key	Summary
	tables threw an exception. This has been fixed.
CIS-104493	Error was encountered while configuring LDAP in TDV for Multi-byte character OU. This has been fixed.
CIS-104497/CIS-105358	DOC Update: OAuth2 documentation has been improved to include more details and examples.
CIS-104554	Support has been added for arbitrary NUMERIC type in data sources Oracle, Postgres, Greenplum, Teradata and Composite.
CIS-104584	Column annotations in TDV Tables were not carried when used in Views. This has been fixed.
CIS-104658	In TDV Azure Domain, External groups retrieval was limited to 100 records. This has been fixed and pagination is now provided.
CIS-104714	TDV ADO.Net Data provider has been upgraded.
CIS-104747	TDV Procedures to Snowflake failed with error "Cause: Bind variable '1' not set". This has been fixed and a new version of Snowflake adapter is now included.
CIS-104750	SQL Server Introspection failed with an error "com.microsoft.sqlserver.jdbc.SQLServerException: Catalog view 'fn_listextendedproperty' is not supported in this version.". This has been fixed.
CIS-104770	The upgrade process does not delete apps/dlm/cis_ds_distributed/endorsed/slf4j-log4j12-1.7.25.jar file, and causing the introspection of local storage file to fail. This file has been moved to archive and the issue is now fixed.
CIS-104793	A particular user that has no READ privileges on data sources can select data due to insufficient checks on the metadata type. Now it's fixed.

(Continued)

Key	Summary
CIS-104802	Unable to save Encrypt option in ODBC DSN editor. This has been fixed.
CIS-104957	Support has been dropped for CentOS 6 in TDV Server and TDV Business Directory. Drop support for CentOS 6 in TDV Server and TDV Business Directory.
CIS-105046	CFS adapters (Amazon S3, Azure Data Lake, Local File Storage and Google Cloud Storage) do not support INSERT statements with partial column lists.
CIS-105073	For svn connection to be successful, Microsoft Visual VC++ version 2013 is required. TDV installer now installs this version of VC++. When using a TDV patch upgrade, it needs to be manually installed. Execute the file vcredist_x64.exe which can be found in the directory <TDV_install_dir>\bin.
CIS-105088	DOC Update: Documentation has been improved to include information about how to configure Github for TDV using Personal Access Tokens.
CIS-105141	When the site name in the Deployment Manager is set to any Japanese character then we see "String contains non ISO-8859-1 code point" error while testing the connection.
CIS-105207	Fixed privilege issue with custom functions
CIS-105273	Fixed function EXTRACTWEEK that was failing when week was 53
CIS-105304	Filter by users option did not work as expected from the Group Management page in the Web Manager as it worked in User Management page. This has been fixed.
CIS-105342	When a XQUERY is cancelled, child procedures were not receiving the cancel call. This has been fixed.
CIS-105391	JSON_TABLE function was not working as expected in a query using a JDBC client tool. This has been fixed.
CIS-105422	Upgraded OpenSSL 1.1.1q (AIX) and 3.0.5 (Windows+Linux) in TDV ODBC

(Continued)

Key	Summary
	drivers to 3.0.8 (Windows/Linux/AIX).
CIS-105428	The display of the options "Expiration Schedule" and "Fault Toleration Policy" overlapped in TDV Studio. This has been fixed.
CIS-105490	Domain name on the login screen of TDV Studio changed to another value automatically. This has been fixed.
CIS-105499	DOC Update: wrapper.conf file will no longer be used by TDV. Documentation is now updated to remove and replace references of this file.

TDV and Business Directory 8.6.1 Fixed Issues

The following issues are fixed in this Service Pack of TIBCO® Data Virtualization.

Key	Summary
CIS-91768	Upgraded OpenSSL 1.1.1 in TDV ODBC to 3.0.5 (Windows+Linux) and 1.1.1q (AIX).
CIS-91784	Unable to connect to a database in TDV that has space in its name. This has been fixed.
CIS-95482	Flows with emoji in the flow name in TDV Web UI, encountered an error when loading data in Tibco Spotfire. This has been fixed.
CIS-100003	ADO.NET Encoder has been modified to use the ZigZag setting for data transfers.
CIS-100372	Upgraded postgresql JDBC driver to 42.2.26 for CVE-2022-31197.
CIS-100382	When using NTLM authentication, unable to connect to ADO .Net driver. This has been fixed.
CIS-100549	Improvement to error message generated in ODBC driver when an invalid hostname is used.
CIS-100551	When using OAuth2 authentication, unable to connect to ADO .Net driver. This has been fixed.
CIS-101546	Upgrading from TDV 8.3 to TDV 8.5 failed with an error "CREATE INDEX error "string too long"". This has been fixed.
CIS-101625	When upgrading directly to TDV 8.6 from prior 8.x versions, errors were

(Continued)

Key	Summary
	encountered which needed the users to upgrade to TDV 8.5.4 first before upgrading to 8.6. This has been fixed. Users can now upgrade to TDV 8.6.1 directly from prior 8.x versions of TDV.
CIS-101809	In a Local File System data source, creating 2 tables with the same file name in different schemas throws an exception similar to "[Code: 1906510, SQL State:] An exception occurred when executing the following query: "CREATE TABLE fileSchema."test1.parquet" (col1 VARCHAR, col2 INTEGER, col3 VARCHAR)". Cause: Table default.test1_46_parquet already exists. You need to drop it first. [Log ID: fd2945c2-ca22-4b80-b698-1be8376dfa95] [jdbc-1906510]". This has been fixed.
CIS-101811	When using a Local File System data source, "DROP TABLE" DDL statement did not remove the file. This has been fixed.
CIS-101827	An error was encountered connecting to Salesforce.com adapter in 8.6 - Cause: org/apache/axis/AxisFault This has been fixed.
CIS-102330	Upgraded Apache Commons Text to 1.10 for CVE-2022-42889.

TDV and Business Directory 8.6 Fixed Issues

The following issues are fixed in the 8.6 release of TIBCO® Data Virtualization.

Key	Summary
CIS-65694	DATE_ADD function is now supported by MySQL Datasource.
CIS-73453	TDV now supports as an extension for Visual Studio 2019 version.
CIS-86554	jQuery has been updated to version 3.6.0 for TDV Web Manager
CIS-88747	Red Hat Enterprise Linux 8 is now supported by TDV.
CIS-90496	Fixed the debug log to display appropriate messages about Apache Drill introspection.
CIS-91321	Fixed the CLOB type column to be CAST as varchar in MySQL datasource.
CIS-92029	Due to a yaml file specification change, a data type mismatch occurred for the existing data in repository when doing a full server backup. This has been fixed.
CIS-92349	NumberFormatException was thrown for published XQuery that has "xs:boolean" data type in REST/JSON response. This is fixed.
CIS-93190	TDV would cast a cell that contained the characters "m", "d", "y", "h", or "s" as a Date or Time data type. This has been fixed. These cells will now retain their original Excel data type.
CIS-	Fixed the Composite datasource connection URL string to display the domain in

(Continued)

Key	Summary
93515	use.
CIS-95146	Fixed the maximum SQL length alias issue across all data sources that caused unexpected results while pushing the query to the underlying data source.
CIS-96226	GROUP BY is now supported in ODATA via system query option \$apply. The \$apply option supports the transformations: Aggregate, Group by, Compute and Filter.
CIS-96350	Server driven pagination is now supported A client can pass the header "odata.maxpagesize" to specify the max page size Also, the server has a new configuration to set a maxpagesize default.
CIS-96671	Added new optional property usable in Connection String Property Name: EnableKeepAlive Property Type: Boolean Default Value: false In DSN Editor UI(ODBC) this property is located under 'connection' tab When set to true, the driver enables TCP-KeepAlive for the connection.
CIS-96849	Fix to the Keystore attached to SOAP datasource which got corrupted intermittently.
CIS-96850	Fixed issue with accessing network files for TDV file data sources.
CIS-96924	TDV failed to execute the DELETE statement with EXISTS operator for Vertica DB. This has been fixed.
CIS-97403	Cache prepared statement plans are now supported in OData. Prepared statements will be used when an ODATA url contains a key predicate.
CIS-97412	Fixed the errors encountered when introspecting the password protected access file.
CIS-97425	After configuring SSL in TDV, the customer is unable to establish a secure connection to the Web Manager. "Select a Certificate" warning pops up each time.

(Continued)

Key	Summary
	To control this, a new configuration setting has been added - Studio > Administration > Configuration > Server > Communications > Want Client Authentication. If true, Server will send client certificate request for SSL authentication. Default is true. The TDV server must be restarted to take effect. You can set this configuration to false to avoid the popup "Select a Certificate" in Web Manager. Note that if you have mutual authentication configured in any of your published web services, setting this configuration to false will disable it.
CIS-97450	Snowflake adapter now supports optional Role name field.
CIS-97755	In Studio, the Client Secret was not obfuscated in the OAuth 2.0 tab for REST, SOAP, and WSDL data sources. This has been fixed.
CIS-97913	Oracle Synonyms with DB Link were not introspecting for Data Source. This has been fixed.
CIS-97991	Support has been added for \$count with \$filter in the Odata call.
CIS-97994	Fixed Null pointer exception when executing Any to Any transformation.
CIS-98010	The updateResources API now supports subtype NONE for type DATA_SOURCE.
CIS-98062	Fixed raw literal value processing issue for SAP data source.
CIS-98111	It will be possible to use the 'Pass-through login' credentials (if you need to do so) while using Teradata's 'Enable Fast Load/Fast Export for large table' option when the source and target datasources are different. This makes sure that the insertion operation also occurs with the provided user credentials (pass-through) and not using the default DS credentials when using this specific set of configurations.
CIS-	More concise error message provided for invalid date format.

(Continued)

Key	Summary
98320	
CIS-98324	ODBC Windows driver closes the connection when returning CLOB values that exceed 16000 characters. This has been fixed.
CIS-98411	Introspection for CFS data sources (Amazon S3, Azure Data Lake and Local File Storage) could skip tables whose name contained special characters. This has been fixed.
CIS-98437	MongoDB data source was not failing over to other nodes in replica set. This has been fixed in MongoDB version 21.0.7947 and up. Please get new adapter from TDV 8.4 or above TDV_adapter_<version>_all.zip hotfix.
CIS-98439	Resolved duplicate records being inserted into Snowflake tables in Snowflake adapter 21.0.7963. Please get new adapter from 8.4 or above TDV_adapter_<version>_all.zip hotfix.
CIS-98455	An 'OAuthGrantType' property has been added to the Salesforce adapter that allows you to set it to 'PASSWORD'.
CIS-98456	Support has been added for OAuth via a SharePoint app. This is made available via the 'SharePointOAuth' AuthScheme. You will also need to set OAuthGrantType to 'Client'. Required Connection Properties: AuthScheme=SharePointOAuth InitiateOAuth=GETANDREFRESH OAuthGrantType=CLIENT OAuthClientId OAuthClientSecret
CIS-98459	Calling a procedure through the TDV ADO .Net Data provider failed. This has been fixed.
CIS-98463	Snowflake JDBC driver has been updated to version 3.13.5 in Snowflake adapter 21.0.7963.0.

(Continued)

Key	Summary
CIS-98499	An issue causing contention and progressive slowness when many quick requests are sent to TDV has been fixed.
CIS-98508	Updated sharepoint adapter to version 21.0.7985.0.
CIS-98510	After a deployment using Deployment Manager, the keystore in the Advanced panel on the SOAP data source at the source side would disappear. This has been fixed.
CIS-98537	SPLIT_PART function did not work with '.' or '?' in some earlier versions of TDV. This has been fixed.
CIS-98539	When defining a Column-Based Security with a "Partial String Mask" rule, the suffix value got replaced with "XXX-," after saving. This is fixed.
CIS-98543	TDV Power BI driver has been updated to version 21.0.7942.0
CIS-98576	Column Description in SQL Server is not set as Annotation in TDV. This is fixed.
CIS-98592	Using the Redshift adapter under "packages", queries returning large amounts of data may cause memory in TDV to run high and CPU usage to increase. Using settings in the "Other" category in the adapter panel can restrict memory and CPU usage if needed. Below are the recommended settings, but these may be altered depending on your situation. MaxConnectionBuffers=50;FlushSessionBuffersPool=True;CancelPendingStatement=True Actions
CIS-98709	Fixed the inconsistent behavior of procedures created and published with OData V4.
CIS-98716	ADO.Net Data Provider version has been updated to 7997.

(Continued)

Key	Summary
CIS-98734	backup_export procedure failed with an xception "Given final block not properly padded. Such issues can arise if a bad key is used during decryption.". This has been fixed.
CIS-98741	GIT resources disappeared from the repository after republishing. Thi is fixed.
CIS-98742	Fixed NPE during logging to log file.
CIS-98772	Fixed issue when using PIVOT or UNPIVOT inside a sql script
CIS-98776	Users without READ privileges on published table were able to retrieve data from that table. This has been fixed.
CIS-98779	Google BigQuery requests would intermittently return the error "HTTP/2.0 404 Not Found". This has been fixed.
CIS-98787	hasClaim/getClaim procedures return an error when a non existing claim is passed. This specifically happens when the JSON is nested. This has been fixed.
CIS-98830	While refreshing the cache the following error was encountered: "The multi-part identifier "aggrExpr3109.c3117" could not be bound". This has been fixed.
CIS-98836	Fixed alias and position errors caused by SELECT over JOIN and function arguments in aggregate functions.
CIS-98846	Fixed query engine optimization issues.
CIS-98847	Fixed memory leak when running queries.
CIS-98869	LDAPS users were getting dropped when "Auto-synchronization" feature is enabled due to a case-sensitive mismatch issue. This has been fixed.

(Continued)

Key	Summary
CIS-98912	Fixed "NLS data type mismatch" issues encountered in RBS policy.
CIS-98932, CIS-98787	Issues with using the built-in procedures hasClaim and getClaim in a nested JSON has been fixed.
CIS-98948	Updated TDV to use log4j 2.17.1.
CIS-99020	Accessing Swagger link for "Published REST Web Service" failed with the error: Fetch error Server Error http://localhost:9490/rest/webservice.json. This has been fixed.
CIS-99024	Fixed issue related to sso Token exchange process. This affects windows driver only.
CIS-99040	Attempting to add a new domain in TDV web manager throws "ServerError: Cannot create domain "LdapLocal".external domain information is invalid. [security-1900204]" error. This has been fixed.
CIS-99042	TO_DATE and PARSE_DATE functions with format option is not throwing an error when an invalid date is provided as an input. Instead it returns an invalid date such as '2021-02-31'. This has been fixed.
CIS-99056	When querying data in Microsoft Excel, the following exception was thrown. "Unable to execute native SQL fetch to create Dataset because it is not able to create java.sql.Statement object. [data-2913120] Cause: Could not find a valid license for using JDBC-ODBC Bridge 2018 on this system." This has been fixed in the JDBCODBC adapter version 21.0.8037.0 and above. This has been fixed.
CIS-99062	Cached views were not being applied with PIVOT and UNPIVOT operators. You may see this error. "Unable to load data source with id "0" from repository. [datasrc-2940000]" This issue has been fixed.

(Continued)

Key	Summary
CIS-99105	Fixed Null Pointer Exception in PushableFunctionSplitter when creating execution plan.
CIS-99130	Scalar subquery not initialized in UPDATE statement if target table is a composite view . This has been fixed.
CIS-99142	VARCHAR datatypes were not getting properly interpreted in TDV. VARCHAR(16) should be interpreted as VARCHAR with 16 characters. This has been fixed.
CIS-99164	Fixed the java.lang.ClassCastException error encountered when creating an execution plan.
CIS-99165	Fixed the Null Pointer Exception encountered when executing query with UnionPreggregator.
CIS-99194	Fixed issues encountered while generating DEBUG logging for the advanced adapters after enabling the DEBUG property in log4j2 file.
CIS-99209	Encryption failures were encountered on the joined node after the sync. This has been fixed to properly communicate between nodes.
CIS-99210	The quotes separating the schema name from the index name are missing when a table is created with an index for an Oracle data source when setting up multi-table caching. This has been fixed.
CIS-99213	Fixed MongoDB adapter to include options "x509" authentication type in the Auth Scheme drop-down list.
CIS-99252	TDV installation folder contained two versions of the ODBC driver installation files. This has been fixed and the duplicate has been removed.
CIS-99262	AGGREGATE Functions were not being pushed down to MySQL when two functions were used in the same SELECT query. This has been fixed.
CIS-99263	If TDV 8.5 ODBC Driver is used to connect to a TDV Server using python as the end client, the client ends the connection with a segmentation fault. This has been

(Continued)

Key	Summary
	fixed.
CIS-99332	Fixed the error "Unknown where node type" encountered in Oracle DB when the "WHERE EXISTS" clause in the DELETE statement is from a view.
CIS-99376	Functions with large input counts can block if the capability file does not support the function. This has been fixed.
CIS-99392	Fixed the missing alias in Fetch node when using \$expand in OData V4.
CIS-99396	The sql projection aliases is now limited to 256 characters for sql projections that do not have a valid alias.
CIS-99403	The TDV ODBC Client throws "Unable to query text" when "Max Text Column Size" parameter is set. This has been fixed.
CIS-99404	A new Snowflake adapter is provided to address the "JWT token invalid" error received when authenticating the adapter.
CIS-99406	Fixed Role Based Access Control (RBAC) violation in TDV Server for CBS policies.
CIS-99429	When the execution plan is generated for a query that contains a function, you may get an error similar to "ERROR: missing FROM-clause entry for table "tExpr6451"". This has been fixed.
CIS-99481	Fixed the Query Engine optimization issue.
CIS-99490	Columns that returned 0 in the earlier TDV versions were returning NULL in TDV 8.5. This has been fixed.
CIS-99542	Fixed TDV windows only installer (uninstaller.exe) issues CVE-2021-22037 and CVE-2021-22038.

(Continued)

Key	Summary
CIS-99554	The users were dropped while enabling "Auto-Sync" in LDAP domain. This has been fixed.
CIS-99588	Using a UNIQUEIDENTIFIER in INSERT or UPDATE in Microsoft SQL Server is now supported. This restriction has been removed when using TDV's Data Ship functionality.
CIS-99640	Fixed GoogleBigQuery adapter timestamp parsing error.
CIS-99655	Documentation update: Instructions to build docker image for Azure Kubernetes environment has been improved for clarity.
CIS-99694	Cannot update the password for the existing LDAP domain if the password contains special characters.
CIS-99772	An "Invalid Login attempt" error encountered while changing the login name for the LDAP domain when the password of the user is different. This has been fixed.
CIS-99773	If the TDV WebUI Data Catalog consists of an incorrect flow created by one user, then the All Flows section of the Web UI gives a blank screen when used by a different user. This issue has been fixed.
CIS-99775	Documentation update (Administration Guide): The requirements to use VCS with TDV has been updated for accuracy.
CIS-99803	Alias resolution for a query was resulting in the error "missing FROM-clause entry for table". This has been fixed.
CIS-99810	CREATE table failed on Amazon Redshift data source due to Double precision column type. This has been fixed.
CIS-99827	REST API POST operation with multi-form data input failed. This has been fixed.
CIS-	ClassCastException occurred when trying to take a full server backup. This has been

(Continued)

Key	Summary
99840	fixed.
CIS-99841	Query against SAP fails with the error "An error has occurred while parsing a dynamic entry" when the query contains a WHERE clause using characters. This has been fixed.
CIS-99871	Functions FIRST and LAST were not working as expected. This has been fixed.
CIS-99993	Column and View data are unavailable using authentication type OAuth when using Dynamics CRM adapter. This has been fixed.
CIS-100034	In a query involving two different SQL servers, a SEMI JOIN caused duplicate rows in the result set. This has been fixed.
CIS-100035	Doc Update: correction to the directory that must be used for placement of the Oracle OCI adapter jars for XML support.
CIS-100053	Odata URL not working as expected when using "ne null & eq null" as a filter option. This has been fixed.
CIS-100097	Doc Update: Support for MS SQL Server 2016 added to the Adapter Guide.
CIS-100152	Doc Update - Kerberos support removed from PostgreSQL Adapter Guide.
CIS-100217	Function FIRST VALUE IGNORE NULLS returned incorrect results. This has been fixed.
CIS-100306	Fixed the error encountered while connecting from Spotfire to TDV using Load balancer Fully Qualified Domain Name.
CIS-100332	Using the client drivers (JDBC, ODBC and ADO.Net, queries with concurrent calls to server gets hung. This has been fixed.

(Continued)

Key	Summary
CIS-100510	Fixed the exception thrown when using ODBC driver with SQL Server "Linked Services".
CIS-100610	Importing a car file failed to re-analyze dependencies and hook the links again, because of a few exceptions encountered in the ImpactApi. This has been fixed.
CIS-100703	Fixed the infinite loop issues in PreparedParser that was caused due to inefficiencies with LEFT parenthesis.
CIS-100819	Doc Update: Package Import Utility usage instructions have been updated in the Admin Guide.
CIS-100872	Doc Update: Clarified the usage of the CREATE TABLE AS SELECT statement in the Reference Guide.
CIS-100877	Doc Update: Deployment Manager Guide has been updated with the correct curl command in the syntax section.

TDV and Business Directory 8.5.4 Fixed Issues

The following issues are fixed in this Service Pack of TIBCO® Data Virtualization.

Key	Summary
CIS-91768	Upgrade TDV ODBC Drivers (Windows/Linux) to use OpenSSL 3.0.5 Upgrade TDV ODBC Driver (AIX) to use OpenSSL 1.1.1q
CIS-91810	Fixed the Oracle EBS datasource introspection issues.
CIS-92349	NumberFormatException was thrown for published XQuery that has "xs:boolean" data type in REST/JSON response. This is fixed.
CIS-95146	Fixed the maximum SQL length alias issue across all data sources that caused unexpected results while pushing the query to the underlying data source.
CIS-96671	Added new optional property usable in Connection String Property Name: EnableKeepAlive Property Type: Boolean Default Value: false In DSN Editor UI(ODBC) this property is located under 'connection' tab. When set to true, the driver enables TCP-KeepAlive for the connection.
CIS-96849	Fix to the Keystore attached to SOAP datasource which got corrupted intermittently.
CIS-97750	A new setting is added to the Snowflake properties YAML which allows literal-only comparisons.

(Continued)

Key	Summary
CIS-97755	In Studio, the Client Secret was not obfuscated in the OAuth 2.0 tab for REST, SOAP, and WSDL data sources. This has been fixed.
CIS-97913	Oracle Synonyms w/DB Link were not introspecting for Data Source. This has been fixed.
CIS-97937	Snowflake adapter has been updated to include new capability for CurrentDate() support.
CIS-97991	Support has been added for \$count with \$filter in the Odata call.
CIS-97994	Fixed Null pointer exception when executing Any to Any transformation.
CIS-98139	When connecting to a SOAP data source, use the alias specified in the Advanced > Certificates section if it exists to allow SSL connections.
CIS-98411	Introspection for CFS data sources (Amazon S3, Azure Data Lake and Local File Storage) could skip tables whose name contained special characters. This has been fixed.
CIS-98455	An 'OAuthGrantType' property has been added to the Salesforce adapter that allows you to set it to 'PASSWORD'.
CIS-98456	Support has been added for OAuth via a SharePoint app. This is made available via the 'SharePointOAuth' AuthScheme. You will also need to set OAuthGrantType to 'Client'. Required Connection Properties: AuthScheme=SharePointOAuth InitiateOAuth=GETANDREFRESH OAuthGrantType=CLIENT OAuthClientId OAuthClientSecret
CIS-98459	Calling a procedure through the TDV ADO .Net Data provider failed. This has been fixed.

(Continued)

Key	Summary
CIS-98499	An issue causing contention and progressive slowness when many quick requests are sent to TDV has been fixed.
CIS-98508	Updated sharepoint adapter to version 21.0.7985.0.
CIS-98539	When defining a Column-Based Security with a "Partial String Mask" rule, the suffix value got replaced with "XXX-', " after saving. This is fixed.
CIS-98543	TDV Power BI driver has been updated to version 21.0.7942.0
CIS-98576	Column Description in SQL Server is not set as Annotation in TDV. This is fixed.
CIS-98592	Using the Redshift adapter under "packages", queries returning large amounts of data may cause memory in TDV to run high and CPU usage to increase. Using settings in the "Other" category in the adapter panel can restrict memory and CPU usage if needed. Below are the recommended settings, but these may be altered depending on your situation. MaxConnectionBuffers=50;FlushSessionBuffersPool=True;CancelPendingStatement=True Actions
CIS-98709	Fixed the inconsistent behavior of procedures created and published with OData V4.
CIS-98716	ADO.Net Data Provider version has been updated to 7997.
CIS-98734	backup_export procedure failed with an xception "Given final block not properly padded. Such issues can arise if a bad key is used during decryption.". This has been fixed.
CIS-98741	GIT resources disappeared from the repository after republishing. Thi is fixed.
CIS-98776	Users without READ privileges on published table were able to retrieve data from that table. This has been fixed.
CIS-98787	hasClaim/getClaim procedures return an error when a non existing claim is passed. This specifically happens when the JSON is nested. This has been fixed.

(Continued)

Key	Summary
CIS-98830	While refreshing the cache the following error was encountered: "The multi-part identifier "aggrExpr3109.c3117" could not be bound". This has been fixed.
CIS-98836	Fixed alias and position errors caused by SELECT over JOIN and function arguments in aggregate functions.
CIS-98912	Fixed "NLS data type mismatch" issues encountered in RBS policy.
CIS-98932, CIS-98787	Issues with using the built-in procedures hasClaim and getClaim in a nested JSON has been fixed.
CIS-98948	Updated TDV to use log4j 2.17.1.
CIS-99036	TDV Oracle adapter has been modified to handle special character column size scenarios.
CIS-99040	Attempting to add a new domain in TDV web manager throws "ServerError: Cannot create domain "LdapLocal".external domain information is invalid. [security-1900204]" error. This has been fixed.
CIS-99042	TO_DATE and PARSE_DATE functions with format option is not throwing an error when an invalid date is provided as an input. Instead it returns an invalid date such as '2021-02-31'. This has been fixed.
CIS-99056	When querying data in Microsoft Excel, the following exception was thrown. "Unable to execute native SQL fetch to create Dataset because it is not able to create java.sql.Statement object. [data-2913120] Cause: Could not find a valid license for using JDBC-ODBC Bridge 2018 on this system." This has been fixed in the JDBCODBC adapter version 21.0.8037.0 and above.
CIS-99062	Cached views were not being applied with PIVOT and UNPIVOT operators. You may see this error. "Unable to load data source with id "0" from repository. [datasrc-2940000]" This issue has been fixed.
CIS-99105	Fixed Null Pointer Exception in PushableFunctionSplitter when creating execution plan.

(Continued)

Key	Summary
CIS-99209	Fixed encryption error in fast cluster join.
CIS-99130	Scalar subquery not initialized in UPDATE statement if target table is a composite view . This has been fixed.
CIS-99142	VARCHAR datatypes were not getting properly interpreted in TDV. VARCHAR(16) should be interpreted as VARCHAR with 16 characters. This has been fixed.
CIS-99164	Fixed the java.lang.ClassCastException error encountered when creating an execution plan.
CIS-99165	Fixed the Null Pointer Exception encountered when executing query with UnionPreggregator.
CIS-99194	Fixed issues encountered while generating DEBUG logging for the advanced adapters after enabling the DEBUG property in log4j2 file.
CIS-99209	Encryption failures were encountered on the joined node after the sync. This has been fixed to properly communicate between nodes.
CIS99210	The quotes separating the schema name from the index name are missing when a table is created with an index for an Oracle data source when setting up multi-table caching. This has been fixed.
CIS-99213	Fixed MongoDB adapter to include options "x509" authentication type in the Auth Scheme drop-down list.
CIS-99262	AGGREGATE Functions were not being pushed down to MySQL when two functions were used in the same SELECT query. This has been fixed.
CIS-99263	If TDV 8.5 ODBC Driver is used to connect to a TDV Server using python as the end client, the client ends the connection with a segmentation fault. This has been fixed.
CIS-99332	Fixed the error "Unknown where node type" encountered in Oracle DB when the "WHERE EXISTS" clause in the DELETE statement is from a view.

(Continued)

Key	Summary
CIS-99342	VCS can not be enabled in TDV 8.5 or higher if there has been an in-place upgrade of just the TDV Sever from TDV 8.x to TDV 8.5.0. On the windows platform only, if you are upgrading from a pre-8.5 TDV Server installation to TDV Server 8.5 or higher, you need to upgrade your TDV Studio to the same version you upgraded your TDV Server with.
CIS-99376	Functions with large input counts can block if the capability file does not support the function. This has been fixed.
CIS-99392	Fixed the missing alias in Fetch node when using \$expand in OData V4.
CIS-99396	Limit for sql projection aliases has been set to 256 characters for the sql projections that do not have a valid alias.
CIS-99403	The TDV ODBC Client throws "Unable to query text" when "Max Text Column Size" parameter is set. This has been fixed.
CIS-99404	A new Snowflake adapter is provided to address the "JWT token invalid" error received when authenticating the adapter.
CIS-99406	Fixed Role Based Access Control (RBAC) violation in TDV Server for CBS policies.
CIS-99429	When the execution plan is generated for a query that contains a function, you may get an error similar to "ERROR: missing FROM-clause entry for table "tExpr6451"". This has been fixed.
CIS-99481	Fixed the Query Engine optimization issue.
CIS-99490	Columns that returned 0 in the earlier TDV versions were returning NULL in TDV 8.5. This has been fixed.
CIS-99554	The users were dropped while enabling "Auto-Sync" in LDAP domain. This has been fixed.
CIS-99588	Using a UNIQUEIDENTIFIER in INSERT or UPDATE in Microsoft SQL Server is now supported. This restriction has been removed when using TDV's Data Ship

(Continued)

Key	Summary
	functionality.
CIS-99640	Fixed GoogleBigQuery adapter timestamp parsing error.
CIS-99694	Cannot update the password for the existing LDAP domain if the password contains special characters.
CIS-99772	An "Invalid Login attempt" error encountered while changing the login name for the LDAP domain when the password of the user is different. This has been fixed.
CIS-99773	If the TDV WebUI Data Catalog consists of an incorrect flow created by one user, then the All Flows section of the Web UI gives a blank screen when used by a different user. This issue has been fixed.
CIS-99803	Alias resolution for a query was resulting in the error "missing FROM-clause entry for table". This has been fixed.
CIS-99810	CREATE table failed on Amazon Redshift data source due to Double precision column type. This has been fixed.
CIS-99840	ClassCastException occurred when trying to take a full server backup. This has been fixed.
CIS-99841	Query against SAP fails with the error "An error has occurred while parsing a dynamic entry" when the query contains a WHERE clause using characters. This has been fixed.
CIS-99871	Functions FIRST and LAST were not working as expected. This has been fixed.
CIS-99993	Column and View data are unavailable using authentication type OAuth when using Dynamics CRM adapter. This has been fixed.
CIS-100034	In a query involving two different SQL servers, a SEMI JOIN caused duplicate rows in the result set. This has been fixed.
CIS-	Function FIRST VALUE IGNORE NULLS returned incorrect results. This has been

(Continued)

Key	Summary
100217	fixed.
CIS-100268	The \$filter condition with null values in a OData query failed. This has been fixed.
CIS-100332	Using the client drivers (JDBC, ODBC and ADO.Net, queries with concurrent calls to server gets hung. This has been fixed.
CIS-100510	Fixed the exception thrown when using ODBC driver with SQL Server "Linked Services".
CIS-100593	Upgrade TDV Server, BD and Studio to use Java 11.0.15. Windows - java version "11.0.15" 2022-04-19 LTS Linux - java version "11.0.15" 2022-04-19 LTS AIX - openjdk version "11.0.15" 2022-04-19
CIS-100609	Update CosmosDB driver to 21.0.8180.0.
CIS-100610	Importing a car file failed to re-analyze dependencies and hook the links again, because of a few exceptions encountered in the ImpactApi. This has been fixed.
CIS-100669	Active Directory adapter has been updated to version 21.0.8133.0.
CIS-100674	API call cbsGetPolicy failed with an error "value may not null". This has been fixed.
CIS-100703	Fixed the infinite loop issues in PreparedParser that was caused due to inefficiencies with LEFT parenthesis.
CIS-100720	Prevented storing any Cross-Site Scripting created while adding rule into the policy of Row-Based-Security in Web Manager.

(Continued)

Key	Summary
CIS-100736	Studio's sql editor's "Save To File" option saved incorrect results in the file. This has been fixed.
CIS-100808	Query containing WITH clause failed with error "The request has been closed. No operations can be performed using it".
CIS-100811	Fixed issue where cancelling of a query request can take abnormally long.
CIS-100812	When user.dir is not set and DEBUG is enabled, Deployment Manager throws an exception.
CIS-100817	When running a request to Google Spread Sheets, you may encounter the exception "User Rate Limit Exceeded. Rate of requests for user exceed configured project quota.". This has been fixed in GoogleSheets adapter version v21.0.8137.0 and later.
CIS-100886	WITH clause was not pushed down in MySQL datasource. This has been fixed.
CIS-100999	The Divide operator in TDV did not return the fractional part of the result and returned only the integer part. For Oracle, Hive data sources, this was contrary to the native behavior. This has been fixed.
CIS-101029	Fixed use case involving non standard identifiers belonging to a WITH clause. Identifiers normally follow the following regular expression: a-zA-Z0-9_ \$#
CIS-101094	In Deployment Manager, when a Principal Bundle is deployed, the "all" group is not replicated to the Target. This causes users to lose privileges on resources located under "/services". This has been fixed.
CIS-101157	The value of Write Timeout Window server configuration setting does not get updated on the node that was joined. This has been fixed.
CIS-	Queries that ran successfully in a previous release of TDV failed with an error

(Continued)

Key	Summary
101170	"The request has been closed. No operations can be performed using it". This has been fixed.
CIS-101201	Cassandra adapter has been updated to version 21.0.8160.
CIS-101227	When using the DATE_TRUNC function in TDV against Oracle, a "Failed query" error was encountered. This has been fixed.
CIS-101229	Web Manager unable to change the language to japanese even if the browser and localisation is set to Japan. This has been fixed.
CIS-101237	Exporting a Full Server Backup failed with an decryption error: This has been fixed.
CIS-101244	Amazon Redshift adapter has been updated to version 21.0.8180.
CIS-101352	Fixed VCS issue with commit folder names having umlaut characters.
CIS-101440	The AWS govcloud end points were not listed in the Amazon S3 adapter endpoints list.
CIS-101546	Upgrading from TDV 8.3 to 8.5.0 failed with CREATE INDEX error "string too long". This has been fixed.

TDV and Business Directory 8.5.3 Fixed Issues

The following issues are fixed in this Service Pack of TIBCO® Data Virtualization.

Key	Summary
CIS-99406	Fixed Role Based Access Control (RBAC) violation in TDV Server for CBS policies.
CIS-99542	Fixed TDV windows only installer (uninstaller.exe) issues CVE-2021-22037 and CVE-2021-22038.
CIS-100985	<p>FastJson was removed from the TDV distribution in 8.5.3. It was a required component in older versions of TIBCO Streaming adapter, but was removed in the newest version.</p> <p>Note: The FastJson library has a known vulnerability CVE-2022-25845, which is fairly severe, but neither TDV nor the Streaming adapter has been vulnerable due to the use of "safe mode" when handling the FastJson library.</p>

TDV and Business Directory 8.5.2 Fixed Issues

The following issues are fixed in this Service Pack of TIBCO® Data Virtualization.

Key	Summary
CIS-98948	Updated TDV to use log4j 2.17.1.
CIS-99023	Removed slf4j-log4j12 dependency for ComputeDB and TibcoStreaming adapters
CIS-99059	Fixed missing log4j class issue in TDV adapter (cis_ds_distributed).
CIS-99162	Updated logback software to logback 1.2.10.
CIS-99238	Added tdv namespace label to tdv.yaml configmap.

TDV and Business Directory 8.5.1 Fixed Issues

The following issues are fixed in this Service Pack of TIBCO® Data Virtualization.

Key	Summary
CIS-98476	<p>A new server configuration is added. Set the following configuration value to True if you want to run Custom Java Procedures:</p> <p>Administration -> Configuration -> Data Sources -> CJP -> Enable the ability to run Custom Java Procedures</p> <p>By default this is set to False. This is a change in behavior from the earlier versions of TDV server. If you set this to True, make sure you fully trust the JAR files used for Custom Java Procedures.</p> <p>Note: The Custom Java Procedure JAR file must exist within the directory specified in the Custom Jar Import Directory server configuration (Administration -> Configuration -> Server -> Configuration -> Files -> Custom Jar Import Directory) and must have a .jar extension in the file name. Because of this, it is important to note that once a customer upgrades to 8.3.1, 8.4.1, or 8.5.1, it will be impossible for Custom Java Procedure data sources to have their URLs pointing to a location other than within the Custom Jar Import Directory.</p>
CIS-98743	<p>To mitigate CVE-2021-44228 ("Log4Shell" zero-day exploit), all bundled log4j2 jar dependencies have been upgraded to log4j 2.17.</p>

TDV and Business Directory 8.5 Fixed Issues

The following issues are fixed in the 8.5 release of TIBCO® Data Virtualization.

Key	Summary
CIS-66502	TDV now supports Oauth2 for published web services (REST, OData) and drivers (JDBC, ODBC and ADO.Net).
CIS-90344	Couchbase adapter now supports query-passthrough option.
CIS-91652	Fix to the Studio UI to improve readability when large data is appended in OAuth tab of the data source.
CIS-92723	<p>The internal PostgreSQL database has been upgraded to PostgreSQL 12.8.</p> <p>On-premises (installers): TDV 8.5 Server and Business Directory now use PostgreSQL 12.8.</p> <p>Docker and Kubernetes: TDV 8.5 Server now uses Postgresql 12.8. Future 12.X updates will automatically be updated for this distribution when the TDV images are rebuilt.</p>
CIS-94227	<p>Fix for the following issue encountered while connecting through the ODBC driver, which prevents users from executing queries using DBLINK:</p> <p><code>ORA-28562: Heterogeneous Services data truncation error</code></p>
CIS-94498	Ability to control the max size of the log files (cs_monitor.log and cs_monitor.out) has been added to the composite.sh/bat files in the linux/windows environments.
CIS-94530	Support for Binary Literals have been added to TDV 8.5.
CIS-94531	Fix for not saving the empty PASSWORD_STRING in the new Data

(Continued)

Key	Summary
	Source window with asterisks.
CIS-94570	Documentation update for the isBlocking parameter set in executeProcudure, executeNativeSql, executeSql, executeSqlScript and executePreparedSql APIs.
CIS-94763	TDV now allows customers to disable group synchronization during the login. A built-in procedure is available that can be invoked to manually sync the groups in the Web Manager or create a trigger to sync the groups.
CIS-95268	Fix to remove Spike Triggers from the list of system event triggers.
CIS-95437	Fix to make HTTP/S Jetty settings (Max/Min Threads, Accept Queue, Max Idle Time) configurable and clean up unused settings
CIS-95846	Fix to the monitor service process which failed to start on non-English Windows Operating Systems in TDV Business Directory version 8.4.
CIS-95913	Documentation update to clarify the MPP Engine functionality in a cluster environment.
CIS-96184/CIS-95834	TDV now supports Table Column Aliases (SQL-92).
CIS-96550	Fix for annotation details to not be truncated when using the ODBC driver.
CIS-96558	Fix to the functions DATEADD, DATEDIFF and DATEPART to remove mandatory quotes requirement for the first parameter.
CIS-96670	Fix for issues encountered while executing UPDATE statements on a Vertica data source with Table alias specified.
CIS-96695	Fix to improve Studio login delay when user is part of the Ldap domain group.

(Continued)

Key	Summary
CIS-96742/CIS-97539	Fix for an intermittent ADO.NET connection failure.
CIS-96915	Fix for retaining the double quotes around the datasource path in the opt file.
CIS-96955	Fix to address a change in the published procedure type with an OUT parameter in TDV 8.3 which created functions instead of procedures in Cognos client.
CIS-97178	Fix for the permission issues seen in the shell script files when applying hotfix.
CIS-97269	Documentation fix with updated links to retrieve the driver for Oracle adapter.
CIS-97544	Fix to the site refresh operation in Business Directory.
CIS-97577	Fix for loading special characters from UTF-8 file when using Informatica data source.
CIS-97624	Fix to not default the ClientSystemUserID to "SYSTEM".
CIS-97663	Fix for performance issues while using nested loops.
CIS-98157	Fix to support ISNUMERIC() function like the SQL Server implementation
CIS-98290	Fix for a data corruption issue when a correlated scalar subquery is within a CASE expression.

TDV and Business Directory 8.4 Fixed Issues

The table below lists the issues fixed in TDV 8.4 release.

8.4 Fixed Issue	Summary
CIS-72933	Fix to display a descriptive database error from the underlying TDV drivers to the end user.
CIS-88735	Fix to enable SSL Mutual authentication login.
CIS-90204	Support For DDL clauses for Vertica and Teradata
CIS-91980	Drill temp directory now shares TDV temp directory.
CIS-92135	Fix to enable creation of Column Based Security rules on a group containing users from two different domains (for example, Composite and LDAP).
CIS-92354	Documentation update for the "FORCE_ESTIMATION" option in Reference Guide > TDV Query Engine Options
CIS-92402	Fix for the alternateSecurityCredentials property map that is used to pass down the OAuthAccessTokenProperty to be processed accurately using the PowerBI data connector.
CIS-92597	Documentation update to the pkg_import command line utility specification about partially introspecting a view from a CAR file.
CIS-92732	Fix for Thai language supported fonts not displaying correctly in Studio. Follow these steps to add the selected fonts to the Studio properties: <ol style="list-style-type: none"> 1. Set the font to Tahoma or a Thai-language supported font in Studio > Edit > Options > Default Font 2. Set the font to Tahoma or a Thai-language supported font in Studio >

(Continued)

8.4 Fixed Issue	Summary
	Edit > Editors > Font 3. Restart Studio.
CIS-92783	Fix for the error encountered while running SOAP Transformation into Relational Data
CIS-92903	TDV pkg_import.sh when using options file throwing the error "Cannot set an attribute "path" on resource"
CIS-92905	Support for Boolean and BIT data types in CBS Policy assignments.
CIS-92959	Fix for Power BI driver failure for user with password that contains special characters
CIS-92992	Fix for the Odata \$expand function failure.
CIS-93006	Fix for issues encountered while importing external tables from Amazon Redshift into TDV.
CIS-93087	Fix for issues encountered when trying to make an OData call with one master entity to 2 child entities having the same column names.
CIS-93088	Fix for issues encountered in response data when we using \$expand=* for the entities that have 2 foreign keys.
CIS-93089	Fix for the Odata \$expand function incorrect behavior.
CIS-93098	Fix for error encountered when executing plan using Curl from Deployment Manager.
CIS-93173	Fix for issues encountered while rendering a multi-level expand containing a 1-to-many relationship.
CIS-93199	Fix for issues encountered with the OData expand functionality while using filters on nested/expanded entities, which causes invalid results.

(Continued)

8.4 Fixed Issue	Summary
CIS-93431	Fix for the error message "unknown operator: \$query" while fetching data from Azure CosmosDB 3.6 using MongoDB adapter in TDV.
CIS-93439	Documentation update for the missing content of the Advanced Tab field columns.
CIS-93496	Fix for issues encountered while generating alias in SQL Server query.
CIS-93556	Fix for issues encountered while connecting to TDV 8.3 ODBC using the unixODBC driver manager.
CIS-93893	Fix for issues encountered when importing CAR files containing columns with NULL/no names.
CIS-94103	Fix for issues seen in GoogleBigQuery Adapter returning NULL records with certain WHERE clauses or with force_parallel option when data is large.
CIS-94187	Fix for issues seen when using TDV SQL Reserved Keywords as column names in views published via OData.
CIS-94202	Implemented performance settings for certain frequently updated repository tables such as security_privileges and metadata_attributes tables.
CIS-94310	Power BI related performance improvements for a TDV published resource.
CIS-94508	Fix for the XML parser decrypting character code as character (_x003a_ to ":") in table name using updateSqlTable API
CIS-94580	<p>In some situations, you may get an exception when using MAX/MIN/ SUM (literal) aggregates. The exception may be similar to this:</p> <p>"The integer value 1,121 cannot be cast because it is outside the required range of 0 to 0"</p>

(Continued)

8.4 Fixed Issue	Summary
	This issue has been fixed.
CIS-94588	In an XSLT Transformation, if the schema of the source contains a "choice" element, the XSL code for the XSLT resource may be incorrect, resulting in empty or missing elements in the result set. This has been fixed.
CIS-94765	Doc update: Transaction Isolation appears be incorrectly described as a proxy-based firewall setting
CIS-95031	Fix for exception handling while executing SQL Script procedures.
CIS-95095	Doc update: Column-Level restrictions set in TDV has the same behavior when a resource is accessed through a client interface, whether the selected resource is a table or a view.
CIS-95442	In TDV Server version 8.4, the monitor service process failed to start on non-English Windows Operating Systems. This has been fixed.
CIS-95846	In TDV Business Directory version 8.4, the monitor service process failed to start on non-English Windows Operating Systems. This has been fixed.
CIS-95899	The server_values.xml has incorrect path and causes the Business Directory 8.4 installation to fail. This has been fixed.

Spotfire® Advanced Data Services License Restrictions

If you are licensing TIBCO® Data Virtualization as Spotfire® Advanced Data Services (formerly known as TIBCO Spotfire® Advanced Data Services), you can publish views from all supported data sources to Spotfire® via JDBC, ODBC and ADO.NET except the following which are sold as separate license add-ons

- Oracle E-Business Suite
- Salesforce.com
- SAP Business Warehouse
- SAP ERP
- Siebel eBusiness Applications

Use of the business directory or clustering requires a full license to TIBCO Data Virtualization. A full TIBCO Data Virtualization license is also required for publishing views as web services or to clients that are not Spotfire® clients.

Jaspersoft® Advanced Data Services License Restrictions

If you are licensing TIBCO Data Virtualization as Jaspersoft Advanced Data Services (formerly known as TIBCO Jaspersoft® Advanced Data Services), you can publish views from all supported data sources to Jaspersoft via JDBC, ODBC and ADO.NET.

Use of the business directory or clustering requires a full license to TIBCO Data Virtualization. A full TIBCO Data Virtualization license is also required for publishing views as web services or to clients that are not Jaspersoft.

TIBCO Data Virtualization for TIBCO Cloud™ Metadata - Metadata Harvesting Limited Edition License Restrictions

If you are licensing TIBCO Data Virtualization as TIBCO Data Virtualization for TIBCO Cloud™ Metadata - Metadata Harvesting Limited Edition, you can (re)introspect all supported data sources to retrieve metadata and provide them to TIBCO Cloud™ Metadata via Web services.

A full TIBCO Data Virtualization license is required for use of the business directory, clustering or provisioning data as well as publishing views as web services or publishing to any destination other than TIBCO Cloud Metadata.

If you want to upgrade from TIBCO Data Virtualization for TIBCO Cloud Metadata - Metadata Harvesting Limited Edition to a full TIBCO Data Virtualization license, you need to license TIBCO Data Virtualization for TIBCO Cloud Metadata - Upgrade to TIBCO Data Virtualization.

TIBCO Data Virtualization for Spotfire® Data Science - Team Studio License restrictions

When licensed as part of Spotfire Data Science - Team Studio (formerly known as TIBCO Spotfire® Data Science - Team Studio), TIBCO Data Virtualization access is only allowed from the Spotfire Data Science - Team Studio Server. A full TIBCO Data Virtualization license is required for use of the Business Directory, clustering or provisioning data as well as publishing views as web services, or publishing to any destination other than Spotfire Data Science - Team Studio.

TIBCO(R) Data Virtualization AWS Infrastructure License Restrictions

Following are the TDV offerings in the AWS Marketplace:

- TIBCO Data Virtualization for Windows (Hourly)
- TIBCO Data Virtualization for Windows (BYOL)
- TIBCO Data Virtualization for Red Hat Linux (BYOL)
- TIBCO Data Virtualization for Red Hat Linux (Hourly)

TIBCO Software provides 24x7, award-winning support services along with uninterrupted access to TIBCO Data Virtualization updates. This requires purchase of a support contract or a software subscription that includes support. Please refer to your maintenance terms for further details. <https://www.tibco.com/resources/terms-and-policies/tibco-maintenance-terms>

AWS Infrastructure

AWS Support is a one-on-one support channel that is staffed 24x7x365 with experienced support engineers. AWS Support offers four support plans: Basic, Developer, Business, and Enterprise. The Basic plan is free of charge and offers support for account and billing questions and service limit increases. The other plans offer an unlimited number of technical support cases with pay-by-the-month pricing and no long term contracts, providing the level of support that meets your needs. [Learn more](#)

Refund Policy

Refunds are not provided, but you can cancel at any time by terminating your instance and canceling the subscription on the Marketplace Portal.

TIBCO Documentation and Support Services

For information about this product, you can read the documentation, contact TIBCO Support, and join TIBCO Community.

How to Access TIBCO Documentation

Documentation for TIBCO products is available on the [Product Documentation website](#), mainly in HTML and PDF formats.

The [Product Documentation website](#) is updated frequently and is more current than any other documentation included with the product.

Product-Specific Documentation

Documentation for TIBCO® Data Virtualization is available on the [TIBCO® Data Virtualization Product Documentation](#) page.

The following documents for this product can be found in the TIBCO Documentation site:

Users

TDV Getting Started Guide

TDV User Guide

TDV Client Interfaces Guide

TDV Tutorial Guide

TDV Northbay Example

Administration

TDV Installation and Upgrade Guide

TDV Administration Guide

TDV Active Cluster Guide

TDV Security Features Guide

Data Sources

TDV Adapter Guides

TDV Data Source Toolkit Guide (Formerly Extensibility Guide)

References

TDV Reference Guide

TDV Application Programming Interface Guide

Other

TDV Business Directory Guide

TDV Discovery Guide

TIBCO TDV and Business Directory Release Notes - Read the release notes for a list of new and changed features. This document also contains lists of known issues and closed issues for this release.

Release Version Support

TDV 8.5 is designated as a Long Term Support (LTS) version. Some release versions of TIBCO Data Virtualization products are selected to be long-term support (LTS) versions. Defect corrections will typically be delivered in a new release version and as hotfixes or service packs to one or more LTS versions. See also [TIBCO Data Virtualization Long-Term Support \(LTS\) Releases](#).

How to Contact Support for TIBCO Products

You can contact the Support team in the following ways:

- To access the Support Knowledge Base and getting personalized content about products you are interested in, visit our [product Support website](#).
- To create a Support case, you must have a valid maintenance or support contract with a Cloud Software Group entity. You also need a username and password to log in to the our [product Support website](#). If you do not have a username, you can request one by clicking **Register** on the website.

How to Join TIBCO Community

TIBCO Community is the official channel for TIBCO customers, partners, and employee subject matter experts to share and access their collective experience. TIBCO Community offers access to Q&A forums, product wikis, and best practices. It also offers access to extensions, adapters, solution accelerators, and tools that extend and enable customers to gain full value from TIBCO products. In addition, users can submit and vote on feature requests from within the [TIBCO Ideas Portal](#). For a free registration, go to [TIBCO Community](#).

Legal and Third-Party Notices

SOME CLOUD SOFTWARE GROUP, INC. (“CLOUD SG”) SOFTWARE AND CLOUD SERVICES EMBED, BUNDLE, OR OTHERWISE INCLUDE OTHER SOFTWARE, INCLUDING OTHER CLOUD SG SOFTWARE (COLLECTIVELY, “INCLUDED SOFTWARE”). USE OF INCLUDED SOFTWARE IS SOLELY TO ENABLE THE FUNCTIONALITY (OR PROVIDE LIMITED ADD-ON FUNCTIONALITY) OF THE LICENSED CLOUD SG SOFTWARE AND/OR CLOUD SERVICES. THE INCLUDED SOFTWARE IS NOT LICENSED TO BE USED OR ACCESSED BY ANY OTHER CLOUD SG SOFTWARE AND/OR CLOUD SERVICES OR FOR ANY OTHER PURPOSE.

USE OF CLOUD SG SOFTWARE AND CLOUD SERVICES IS SUBJECT TO THE TERMS AND CONDITIONS OF AN AGREEMENT FOUND IN EITHER A SEPARATELY EXECUTED AGREEMENT, OR, IF THERE IS NO SUCH SEPARATE AGREEMENT, THE CLICKWRAP END USER AGREEMENT WHICH IS DISPLAYED WHEN ACCESSING, DOWNLOADING, OR INSTALLING THE SOFTWARE OR CLOUD SERVICES (AND WHICH IS DUPLICATED IN THE LICENSE FILE) OR IF THERE IS NO SUCH LICENSE AGREEMENT OR CLICKWRAP END USER AGREEMENT, THE LICENSE(S) LOCATED IN THE “LICENSE” FILE(S) OF THE SOFTWARE. USE OF THIS DOCUMENT IS SUBJECT TO THOSE SAME TERMS AND CONDITIONS, AND YOUR USE HEREOF SHALL CONSTITUTE ACCEPTANCE OF AND AN AGREEMENT TO BE BOUND BY THE SAME.

This document is subject to U.S. and international copyright laws and treaties. No part of this document may be reproduced in any form without the written authorization of Cloud Software Group, Inc.

TIBCO, the TIBCO logo, the TIBCO O logo, ActiveSpaces, Enterprise Messaging Service, Spotfire, TERR, S-PLUS, and S+ are either registered trademarks or trademarks of Cloud Software Group, Inc. and/or its subsidiaries in the United States and/or other countries.

Java and all Java based trademarks and logos are trademarks or registered trademarks of Oracle Corporation and/or its affiliates.

All other product and company names and marks mentioned in this document are the property of their respective owners and are mentioned for identification purposes only. You acknowledge that all rights to these third party marks are the exclusive property of their respective owners. Please refer to Cloud SG’s Third Party Trademark Notices (<https://www.cloud.com/legal>) for more information.

This document includes fonts that are licensed under the SIL Open Font License, Version 1.1, which is available at: <https://scripts.sil.org/OFL>

Copyright (c) Paul D. Hunt, with Reserved Font Name Source Sans Pro and Source Code Pro.

Cloud SG software may be available on multiple operating systems. However, not all operating system platforms for a specific software version are released at the same time. See the “readme” file

for the availability of a specific version of Cloud SG software on a specific operating system platform.

THIS DOCUMENT IS PROVIDED “AS IS” WITHOUT WARRANTY OF ANY KIND, EITHER EXPRESS OR IMPLIED, INCLUDING, BUT NOT LIMITED TO, THE IMPLIED WARRANTIES OF MERCHANTABILITY, FITNESS FOR A PARTICULAR PURPOSE, OR NON-INFRINGEMENT.

THIS DOCUMENT COULD INCLUDE TECHNICAL INACCURACIES OR TYPOGRAPHICAL ERRORS. CHANGES ARE PERIODICALLY ADDED TO THE INFORMATION HEREIN; THESE CHANGES WILL BE INCORPORATED IN NEW EDITIONS OF THIS DOCUMENT. CLOUD SG MAY MAKE IMPROVEMENTS AND/OR CHANGES IN THE PRODUCT(S), THE PROGRAM(S), AND/OR THE SERVICES DESCRIBED IN THIS DOCUMENT AT ANY TIME WITHOUT NOTICE.

THE CONTENTS OF THIS DOCUMENT MAY BE MODIFIED AND/OR QUALIFIED, DIRECTLY OR INDIRECTLY, BY OTHER DOCUMENTATION WHICH ACCOMPANIES THIS SOFTWARE, INCLUDING BUT NOT LIMITED TO ANY RELEASE NOTES AND "README" FILES.

This and other products of Cloud SG may be covered by registered patents. For details, please refer to the Virtual Patent Marking document located at <https://www.tibco.com/patents>.

Copyright © 2002-2024. Cloud Software Group, Inc. All Rights Reserved.