



TIBCO® Trading Partner Management REST API User's Guide

*Software Release 1.1
October 2019*

Important Information

SOME TIBCO SOFTWARE EMBEDS OR BUNDLES OTHER TIBCO SOFTWARE. USE OF SUCH EMBEDDED OR BUNDLED TIBCO SOFTWARE IS SOLELY TO ENABLE THE FUNCTIONALITY (OR PROVIDE LIMITED ADD-ON FUNCTIONALITY) OF THE LICENSED TIBCO SOFTWARE. THE EMBEDDED OR BUNDLED SOFTWARE IS NOT LICENSED TO BE USED OR ACCESSED BY ANY OTHER TIBCO SOFTWARE OR FOR ANY OTHER PURPOSE.

USE OF TIBCO SOFTWARE AND THIS DOCUMENT IS SUBJECT TO THE TERMS AND CONDITIONS OF A LICENSE AGREEMENT FOUND IN EITHER A SEPARATELY EXECUTED SOFTWARE LICENSE AGREEMENT, OR, IF THERE IS NO SUCH SEPARATE AGREEMENT, THE CLICKWRAP END USER LICENSE AGREEMENT WHICH IS DISPLAYED DURING DOWNLOAD OR INSTALLATION OF THE SOFTWARE (AND WHICH IS DUPLICATED IN THE LICENSE FILE) OR IF THERE IS NO SUCH SOFTWARE LICENSE AGREEMENT OR CLICKWRAP END USER LICENSE AGREEMENT, THE LICENSE(S) LOCATED IN THE "LICENSE" FILE(S) OF THE SOFTWARE. USE OF THIS DOCUMENT IS SUBJECT TO THOSE TERMS AND CONDITIONS, AND YOUR USE HEREOF SHALL CONSTITUTE ACCEPTANCE OF AND AN AGREEMENT TO BE BOUND BY THE SAME.

ANY SOFTWARE ITEM IDENTIFIED AS THIRD PARTY LIBRARY IS AVAILABLE UNDER SEPARATE SOFTWARE LICENSE TERMS AND IS NOT PART OF A TIBCO PRODUCT. AS SUCH, THESE SOFTWARE ITEMS ARE NOT COVERED BY THE TERMS OF YOUR AGREEMENT WITH TIBCO, INCLUDING ANY TERMS CONCERNING SUPPORT, MAINTENANCE, WARRANTIES, AND INDEMNITIES. DOWNLOAD AND USE OF THESE ITEMS IS SOLELY AT YOUR OWN DISCRETION AND SUBJECT TO THE LICENSE TERMS APPLICABLE TO THEM. BY PROCEEDING TO DOWNLOAD, INSTALL OR USE ANY OF THESE ITEMS, YOU ACKNOWLEDGE THE FOREGOING DISTINCTIONS BETWEEN THESE ITEMS AND TIBCO PRODUCTS.

This document is subject to U.S. and international copyright laws and treaties. No part of this document may be reproduced in any form without the written authorization of TIBCO Software Inc.

TIBCO, the TIBCO logo, the TIBCO O logo, and TIBCO BusinessConnect are either registered trademarks or trademarks of TIBCO Software Inc. in the United States and/or other countries.

Java and all Java based trademarks and logos are trademarks or registered trademarks of Oracle and/or its affiliates.

All other product and company names and marks mentioned in this document are the property of their respective owners and are mentioned for identification purposes only.

This software may be available on multiple operating systems. However, not all operating system platforms for a specific software version are released at the same time. Please see the readme.txt file for the availability of this software version on a specific operating system platform.

THIS DOCUMENT IS PROVIDED "AS IS" WITHOUT WARRANTY OF ANY KIND, EITHER EXPRESS OR IMPLIED, INCLUDING, BUT NOT LIMITED TO, THE IMPLIED WARRANTIES OF MERCHANTABILITY, FITNESS FOR A PARTICULAR PURPOSE, OR NON-INFRINGEMENT.

THIS DOCUMENT COULD INCLUDE TECHNICAL INACCURACIES OR TYPOGRAPHICAL ERRORS. CHANGES ARE PERIODICALLY ADDED TO THE INFORMATION HEREIN; THESE CHANGES WILL BE INCORPORATED IN NEW EDITIONS OF THIS DOCUMENT. TIBCO SOFTWARE INC. MAY MAKE IMPROVEMENTS AND/OR CHANGES IN THE PRODUCT(S) AND/OR THE PROGRAM(S) DESCRIBED IN THIS DOCUMENT AT ANY TIME.

THE CONTENTS OF THIS DOCUMENT MAY BE MODIFIED AND/OR QUALIFIED, DIRECTLY OR INDIRECTLY, BY OTHER DOCUMENTATION WHICH ACCOMPANIES THIS SOFTWARE, INCLUDING BUT NOT LIMITED TO ANY RELEASE NOTES AND "READ ME" FILES.

This and other products of TIBCO Software Inc. may be covered by registered patents. Please refer to TIBCO's Virtual Patent Marking document (<https://www.tibco.com/patents>) for details.

Copyright © 2014-2019. TIBCO Software Inc. All Rights Reserved.

Contents

TIBCO Documentation and Support Services	4
Introduction to TIBCO Trading Partner Management REST API	5
Conceptual Structure	5
Conceptual Workflow	6
Main Benefits	6
Technical Terminology	8
REST	8
RESTful	9
HTTP	9
Request	9
Response	10
Protocol Parameters	10
WADL	10
CRUD	11
JSON	11
Communicating with TPM REST API	13
URL Format and Example	13
Data Object Representation	13
RESTful HTTP Request and Response Examples	13
Java Approach	18
Protocols and Properties References	19
Public Transport Protocol Properties	19
Business Protocol Properties	25
Business Protocol Operation Node Properties	42
Java API Reference Pages	54

TIBCO Documentation and Support Services

How to Access TIBCO Documentation

Documentation for TIBCO products is available on the TIBCO Product Documentation website, mainly in HTML and PDF formats.

The TIBCO Product Documentation website is updated frequently and is more current than any other documentation included with the product. To access the latest documentation, visit <https://docs.tibco.com>.

Product-Specific Documentation

Documentation for TIBCO Trading Partner Management REST API is available on the [TIBCO Trading Partner Management REST API](#) page.

The following documents for this product can be found in the TIBCO Documentation Library:

- *TIBCO Trading Partner Management REST API User's Guide*
- *TIBCO Trading Partner Management REST API Installation*
- *TIBCO Trading Partner Management REST API Release Notes*

How to Contact TIBCO Support

You can contact TIBCO Support in the following ways:

- For an overview of TIBCO Support, visit <http://www.tibco.com/services/support>.
- For accessing the Support Knowledge Base and getting personalized content about products you are interested in, visit the TIBCO Support portal at <https://support.tibco.com>.
- For creating a Support case, you must have a valid maintenance or support contract with TIBCO. You also need a user name and password to log in to <https://support.tibco.com>. If you do not have a user name, you can request one by clicking Register on the website.

How to Join TIBCO Community

TIBCO Community is the official channel for TIBCO customers, partners, and employee subject matter experts to share and access their collective experience. TIBCO Community offers access to Q&A forums, product wikis, and best practices. It also offers access to extensions, adapters, solution accelerators, and tools that extend and enable customers to gain full value from TIBCO products. In addition, users can submit and vote on feature requests from within the [TIBCO Ideas Portal](#). For a free registration, go to <https://community.tibco.com>.

Introduction to TIBCO Trading Partner Management REST API

TPM REST API complies with the REST, RepresEntational State Transfer, architectural style. It provides you with set of APIs to perform the Create, Retrieve, Update, and Delete (CRUD) operations in ConfigStore.

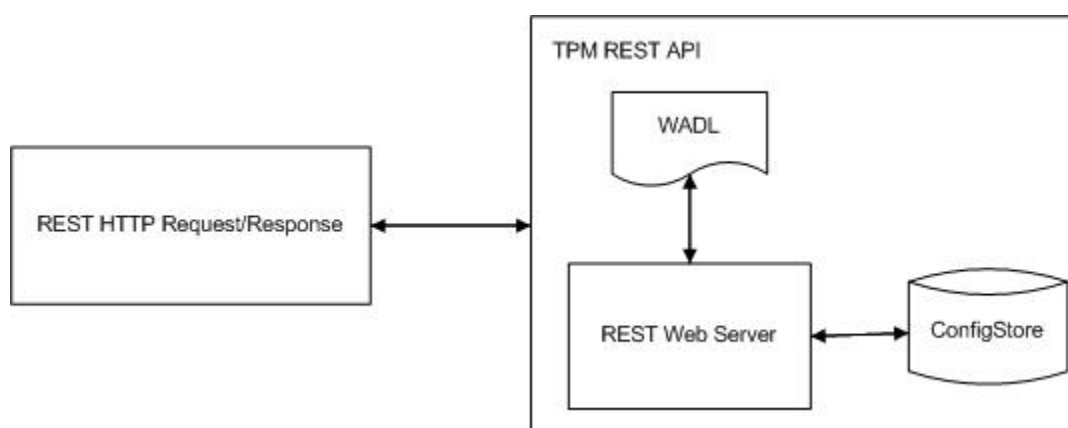


This document refers this product as TPM REST API.

Conceptual Structure

Conceptual structure provides a structural overview on TPM REST API that helps you to identify its main components. This overview helps you understand how the main components work with each other from a workflow perspective.

The following figure illustrates TPM REST API conceptual structure and workflow:



Main Components

This product is composed of three main components as listed in the following table:

Component Name	Description
REST Web Server	The process unit of TPM REST API.
WADL	Web Application Description Language, any RESTful HTTP Request and Response are compliant with its description.
ConfigStore	The ConfigStore records all the information that you provide to TIBCO BusinessConnect. For example, it stores information about business partners, configuration parameters, and transport settings.

Main Participants in Conceptual Workflow

The conceptual workflow consists of two main participants as listed in the following table:

Participant Name	Description
REST HTTP Request/ Response	It acts as a client to send and receive RESTful HTTP competent Request and Response to and from the TPM REST API.
TPM REST API	The product itself that handles all the client's requests and replies with designated responses.

Conceptual Workflow

This conceptual workflow section describes how TPM REST API processes a RESTful HTTP request.

Construct your RESTful HTTP request in accordance with description of the `application.wadl` description.

The `application.wadl` description is accessible from one of the following destinations:

- access it from, for example, the `TIBCO_HOME\tpm-rest\Version_Number\wadl` directory.
- download it from, for example, `http://host:port_number/wadl/v1/application.wadl`.

Workflow Sequence

1. You send a RESTful HTTP request that is in accordance with the WADL description to TPM REST API.
2. TPM REST API processes the request:
 - a. REST Web Server translates the RESTful HTTP request into CRUD.
 - b. Each CRUD function invokes a designated set of ConfigStore API.
 - c. ConfigStore API commits the CRUD operation to ConfigStore database.
 - d. REST Web Server translates the CRUD operation results into a RESTful HTTP response.
3. TPM REST API sends back a RESTful HTTP response.

Main Benefits

TPM REST API provides many benefits for you by providing sets of APIs.

The main feature of the TPM REST API is its RESTful HTTP API, a compact Java API that embodies major REST concepts such as:

- Uniform interface, standardized interfaces to interact with ConfigStore via RESTful HTTP Requests and Responses.
- Component, logical container for handling processes.
- Connector, compliant with communication protocols that enables communication between REST components.

List of Main Benefits

TPM REST API embodies major REST concepts, by implementing this product, which helps you to enjoy the following list of benefits:

- Agile development. You are only required to read the `application.wadl` description before constructing your RESTful HTTP request.
- Variety of supported protocols. This product supports many communication protocols.

- Compact process unit. This product handles all processing tasks.

Technical Terminology

TPM REST API implements the REST architectural style, HTTP, and other communication protocols. This section introduces technological terms that are involved or related to this product.

REST

REST, Representational State Transfer, is an architectural style for implementing distributed hypermedia systems.

TPM REST API implements the REST architectural style that comprises of the following:

- [REST Architectural Constraints](#)
- [REST Architectural Elements](#)
- [REST Architectural Views](#)

To qualify as a REST architectural style, TPM REST API needs to satisfy the set of REST architectural constraints which are applied to the elements within its architecture. Such elements are referred to as the REST architectural elements. After you have understood how the elements work together under the constraints, then you virtualize the data-flowing path in TPM REST API through the REST architectural views.



For more information regarding the REST architectural style, see *Architectural Styles and the Design of Network-based Software Architectures*.

REST Architectural Constraints

REST architectural constraints are as the following:

1. Client-Server
2. Stateless
3. Cache
4. Uniform Interface
5. Layered System
6. Code-On-Demand

REST Architectural Elements

REST architectural elements are as the following:

- Data Elements, which include resource, resource identifier, representation, representation metadata, resource metadata, and control data.
- Connectors, which include client, server, cache, resolver, and tunnel.
- Components, which include origin server, gateway, proxy, and user agent.

REST Architectural Views

There are three REST Architectural Views:

- Process View
- Connector View
- Data View

RESTful

RESTful is the web service that adheres to REST architectural constraints.

TPM REST API possesses the following three constraints to qualify as a RESTful HTTP API:

- Uniform Resource Identifier (URI). The name of a web service resource is identified by a URI.
- HTTP. The API is HTTP-based interface and it is driven by hypertext.
- Hypermedia. A hyperlink represents a resource's state.

HTTP

HTTP is a transport protocol for the application layer. HTTP/1.1 specification is in common use.

TPM REST API receives RESTful HTTP Requests and replies RESTful HTTP Response in accordance with the HTTP/1.1 specification.

HTTP/1.1

The HTTP/1.1 specification is the third version of HTTP and a RESTful API supports all aspects of the HTTP/1.1 specification.

Message is the basic HTTP communication unit and HTTP/1.1 has two message types:

- [Request](#)
- [Response](#)

Protocol parameters are the content of an HTTP Request or Response message. For an HTTP protocol parameters introduction, see [Protocol Parameters](#).

Request

Request is a message type. Message is the basic HTTP communication unit.

HTTP/1.1 defines specification of the Request message.

Request Message

Request message is a message sent from a client to a server.

From the TPM REST API perspective, an HTTP Request message is a RESTful HTTP Request that TPM REST API receives to process.

Request Method

Request method is to be performed on the resource and the resource is identified by URI.



The `application.wadl` file describes how to request URI and other HTTP/1.1 protocol parameters.

Request method includes the following methods:

- OPTIONS
- GET
- HEAD
- POST
- PUT
- DELETE

- TRACE
- CONNECT

Response

Response is a message type. Message is the basic HTTP communication unit.

HTTP/1.1 defines specification of the Request message.

Response Message

Response message is a message that a server responds to a client after receiving and interpreting a request message.

From the TPM REST API perspective, TPM REST API responds with an HTTP Response message to a RESTful HTTP Request.

Protocol Parameters

HTTP protocol parameters represent the content of an HTTP Request or Response message.

The following is a list of HTTP protocol parameters:

- HTTP Version
- Uniform Resource Identifiers
- Date/Time Formats
- Character Sets
- Content Codings
- Transfer Codings
- Media Types
- Product Tokens
- Quality Values
- Language Tags
- Entity Tags
- Range Units

Uniform Resource Identifiers

REST APIs use Uniform Resource Identifiers, URIs, to represent the resource state in either absolute or relative form.

URI does not represent a specific location of a resource.

Uniform Resource Locators

Uniform Resource Locators (URLs) is a deviant of URIs. It represents the specific location of a resource.

WADL

Web Application Description Language (WADL) is HTTP-based Web applications description for machines to process.

In the REST architectural style, each component has the ability to function independently. To enable communication between the components, WADL is designed to provide description on how the components communicate with each other.

TPM REST API provides the `application.wadl` file for a client to send an HTTP RESTful Request and it responds to the client in accordance with the same WADL description.

CRUD

CRUD is the acronym of the Create, Retrieve, Update, and Delete functions. They are commonly referred to as the four basic persistent storage functions, which are the four SQL statements.

From the TPM REST API perspective, CRUD functions have been abstracted as a conceptual acronym. Because TPM REST API provides RESTful HTTP Request and Response web services, the CRUD functions have not only been committed in the ConfigStore database as SQL statements, but also help to interpret a RESTful HTTP Request or Response to invoke ConfigStore APIs.

Here is the equivalent interpretations from the HTTP Request methods to the CRUD functions:

HTTP Request Methods	Equivalent CRUD Functions
POST	Create
GET	Retrieve
PUT	Update
DELETE	Delete

Here is the equivalent interpretations from the CRUD functions to the SQL statements that have been committed in the ConfigStore database:

CRUD Functions	Equivalent SQL Statements
Create	INSERT
Retrieve	SELECT
Update	UPDATE
Delete	DELETE

JSON

JSON is acronym for JavaScript Object Notation.

JSON is a standardized format that is designed to transmit data objects in human-readable representation.

The following is a list of JSON forms:

- Object
- Array
- Value
- String
- Number

JSON Represents TPM REST API Data Objects

TPM REST API uses the following two JSON forms to represent data objects:

- JSON object form. TPM REST API uses JSON object form to represent regular complex data objects.
- JSON array form. TPM REST API uses JSON array form to represent a collection and an array of data objects.

Communicating with TPM REST API

This section describes RESTful HTTP Request and Response formalities, involved parameters, and examples.

URL Format and Example

TPM REST API is addressed via URLs that comply with the REST-based URL format given here.

Every HTTP Request and Response communicate with TPM REST API through URL, the URL format is as the following:

`http://host:port/resource_base_path+resource_path?query_parameters`



The application.wadl description specifies details of *resource base path*, *resource path*, and *query parameters*.

Data Object Representation

TPM REST API mainly consumes data objects in JSON forms.

The following are two data object categories for communicating with TPM REST API:

- [Data Object Forms of an HTTP Request](#)
- [Data Object Form of an HTTP Response](#)

Data Object Forms of an HTTP Request

TPM REST API consumes data objects in regular HTTP query string form that is sent by an HTTP Request:



- File Content data object, for example keys, certificates, and uploaded files, are consumed and responded in Base64 format.
- When explicitly retrieving file content data object with `.content` suffix, TPM REST API will respond with the file content.
- When retrieving file content data object with `.reference` suffix, TPM REST API will respond with the according file content reference.
- When retrieving file content data object with no suffix, TPM REST API will process the request as retrieving file content data object with `.reference` suffix.

Data Object Form of an HTTP Response

TPM REST API represents data objects in the following forms that are sent by an HTTP Response:

- JSON object form, represents a regular complex data object.
- JSON array form, represents a collection and an array of data object.



Response status of the Create, Update, and Delete operations are as the following:

- Successful operation response: `{"result": "Operate successfully"}`
- Failed operation response: `{"errorMessage": "XXXXXX"}`

RESTful HTTP Request and Response Examples

This section provides examples of RESTful HTTP Request and Response.

The RESTful HTTP Requests are categorized according to method types as the following:

- [POST Method](#)
- [GET Method](#)
- [PUT Method](#)
- [DELETE Method](#)



Examples are in the pairs of RESTful HTTP Request and Response.

POST Method

The RESTful HTTP Request POST method is equivalent to Create functions and INSERT SQL statement.

The following example is to insert a new partner, Partner1, in ConfigStore database.

HTTP Message Type	Example
Request	<code>http://localhost:8090/tpmRest/v1/participants/participant?isHost=false&name=partner1&isActive=true</code>
Response	<ul style="list-style-type: none"> • Successful operation response:{"result": "Operate successfully"} • Failed operation response:{"errorMessage": "XXXXXX"}

GET Method

The RESTful HTTP Request GET method is equivalent to the Retrieve functions and Select SQL statement.

This following example is to retrieve values of enabled EZComm protocol of partner Buyer:

HTTP Message Type	Example
Request	<code>http://localhost:8090/tpmRest/v1/participants/enabledProtocolPropertyValues?participantName=Buyer&protocol=EZComm&names=["AllowOverrideFilename","dupDetectOutbound","dupDetectInbound"]</code>
Response	<code>{"result": [false, false, false]}</code>

This following example is to retrieve enabled EZComm protocol property names from a partner:

HTTP Message Type	Example
Request	<code>http://localhost:8090/tpmRest/v1/participants/partnerpropertydefinitions?protocol=EZComm</code>

HTTP Message Type	Example
Response	<pre>{ "result": [{ "defaultValue": null, "displayName": "Allow override of filename via HTTP parameter", "name": "AllowOverrideFilename", "type": "boolean" }, { "defaultValue": null, "displayName": "Duplicate Detection for Outbound", "name": "dupDetectOutbound", "type": "boolean" }, { "defaultValue": null, "displayName": "Duplicate Detection for Inbound", "name": "dupDetectInbound", "type": "boolean" }, { "defaultValue": null, "displayName": "Use tibXML Packaging", "name": "tibXMLPublicMsgFormat", "type": "boolean" }, { "defaultValue": null, "displayName": "Store and Forward Authentication Mode", "name": "SFAuthenticationMode", "type": "string" }, { "defaultValue": null, "displayName": "Store and Forward Authentication Mode Proxy Agent", "name": "ProxySFAuthenticationMode", "type": "string" }] }</pre>


This following example is to retrieve enabled EZComm protocol transport properties of partner Partner1:

HTTP Message Type	Example
Request	<code>http://localhost:8090/tpmRest/v1/participants/transport/all?participantName=partner1&protocolName=EZComm</code>
Response	<pre>{ "result": [{ "name": "file", "type": "FILE" }, { "name": "http", "type": "HTTP" }] }</pre>

This following example is to retrieve the reference value of the FileScriptFile property of a File transport named file under the EZComm protocol for partner Partner1:




The file content data object, FileScriptsFile, without suffix, TPM REST API processes the request as retrieving file content data object with .reference suffix.

HTTP Message Type	Example
Request	<pre>http://localhost:8090/tpmRest/v1/participants/transportPropertyValues?participantName=partner1&protocolName=EZComm&transportName=file&names=["FileScriptsFile"]</pre>
Response	<pre>{ "result": [{ "c": "/temp/rest/db.properties" }] }</pre> <div>  TPM REST API responds with the according file content reference. </div>

This following example is to retrieve the reference value of the FileScriptFile property of a File transport named file under the EZComm protocol for partner Partner1:




The file content data object, FileScriptsFile, with explicit .reference suffix, TPM REST API responds with the according file content reference.

HTTP Message Type	Example
Request	<code>http://localhost:8090/tpmRest/v1/participants/transportPropertyValues?participantName=partner1&protocolName=EZComm&transportName=file&names=["FileScriptsFile.reference"]</code>
Response	<pre>{"result":["c:/temp/rest/db.properties"]}</pre> <div>  TPM REST API responds with the according file content reference. </div>

This following example is to retrieve the content value of the FileScriptFile property of a File transport named file under the EZComm protocol for partner Partner1:



The file content data object, FileScriptsFile, with explicit .content suffix, TPM REST API responds with the file content.


HTTP Message Type	Example
Request	<code>http://localhost:8090/tpmRest/v1/participants/transportPropertyValues?participantName=partner1&protocolName=EZComm&transportName=file&names=["FileScriptsFile.content"]</code>
Response	<pre>{"result":["ZGIuZHJpdmVyPW9yYWNsZS5qZGJjLk9yYWNsZURyaXZlcg0KZGIudXJsPWpkYmM6b3JhY2x1OnRoYW46QHRhbnRvbmk&tZHQ6MTUyMTpYRQ0KZGIudXNlcj1iYw0KZGIucGFzc3dvcmQ9YmM="]}</pre> <div>  TPM REST API responds with the file content. </div>

This following example is to retrieve the private key with alias name bcpartner1_key.p12 of partner Partner1 in PKCS format:



The file content data object, alias name is bcpartner1_key.p12 private key, is in Base64 format.


HTTP Message Type	Example
Request	<code>http://localhost:8090/tpmRest/v1/participants/privateKeyCredential?participantName=partner1&format=PKCS12&alias=bcpartner1_key.p12</code>

HTTP Message Type	Example
Response	<pre>{ "result": { "alias": "bcpartner1_key.p12", "creationDate": null, "dn": "cn=Trading Partner One,ou=BusinessConnect Server (only for TEST purposes),o=TIBCO Software Inc.,l=Palo Alto, st=California,c=US serial #7a3ed2ea20", "encryptionAlgorithm": 0, "encryptionKeyFingerprint": "", "encryptionKeyID": "", "encryptionKeyLength": 0, "expiryDate": { "date": 31, "day": 2, "hours": 10, "minutes": 52, "month": 11, "seconds": 13, "time": 1735671133000, "timezoneOffset": 480, "year": 124 }, "password": "IRbb9HE1NlLhs+HyIQ1jQ8Fg9Ffc+hxnaGSCfUKB7xPe1xNUDKF/w==", "priCredContent": "MIIQQIBAzCCDgcGCSqGSib3DQEHAaCCDfgEgg30MIIN8DCCAukGCSqGSib3DQEHAaCCAtEggLWMIIC0jCCAs4GCYqGSib3DQEM CgECoIICpjCCAqIwHAYKKoZIhvcNAQwBAzA0BAh/g3eJa5dMVQICB9AEggKAwwKc9/j/bZjAkGauBJo1yYeWOYsbB2iq6FDe0o+/HitTzIiWPJyLfOn04GY6me2qtcXF6d7Yx6qN3W3xkGbLiUeYQttnnxMFtnkD1+DRqWKIXmo1r8loT ZntyKPdenVPkmFri06Nmdc7zDyRIkncz9nmZT/+iJHkGvQsdtbDT+hrLz1yD zeyqX7YUdCavkToQ5W9S571Vxn4ajKup8Xr+=", "pubCredContent": "", "shadowExpiryDate": null, "shadowName": "", "signingAlgorithm": 0, "signingKeyFingerprint": "", "signingKeyID": "", "signingKeyLength": 0, "type": "KCRED", "updatedAtFileName": "bcpartner1_key.p12", "userID": "" } }</pre> <div>  <p>The file content data object, that is the PriCredContent, is in Base64 format as of:</p> <pre>MIIQQIBAzCCDgcGCSqGSib3DQEHAaCCDfgEgg30MIIN8DCCAukGCSqGSib3DQEHAaCCAtEggLWMIIC0jCCAs4GCYqGSib3DQEMCgECoIICpjCCAqIwHAYKKoZIhvcNAQwBAzA0BAh/g3eJa5dMVQICB9AEggKAwwKc9/j/bZjAkGauBJo1yYeWOYsbB2iq6FDe0o+/HitTzIiWPJyLfOn04GY6me2qtcXF6d7Yx6qN3W3xkGbLiUeYQttnnxMFtnkD1+DRqWKIXmo1r8loT ZntyKPdenVPkmFri06Nmdc7zDyRIkncz9nmZT/+iJHkGvQsdtbDT+hrLz1yDzeyqX7YUdCavkToQ5W9S571Vxn4ajKup8Xr+=.</pre> </div>

PUT Method

The RESTful HTTP Request PUT method is equivalent to Update functions and UPDATE SQL statement.

The following is an example to update the certificate credential of a participant in a ConfigStore database.

HTTP Message Type	Example
Request	<pre>http://localhost:8090/rest/participants/ certificatecredential?participantName=test &newAlias=new_cert&fileContent=MIIQQIBAzC +==&fileName=bcpartner1_cert.p7b &shadowCertName=shadow_cert&getby=1389196800000&alias=cert</pre> <div>  <div>File content data object: <i>MIIQQIBAzC+==</i> is in Base64 format.</div> </div>
Response	<ul style="list-style-type: none"> Successful operation response: {"result": "Operate successfully"} Failed operation response: {"errorMessage": "XXXXXX"}

DELETE Method

The RESTful HTTP Request DELETE method is equivalent to Delete functions and DELETE SQL statement.

The following is an example to delete a partner in ConfigStore database.

HTTP Message Type	Example
Request	<pre>http://localhost:8090/tpmRest/v1/participants/participant? name=new_participant</pre>
Response	<ul style="list-style-type: none"> Successful operation response: {"result": "Operate successfully"} Failed operation response: {"errorMessage": "XXXXXX"}

Java Approach

TPM REST API consume requests that are made from a Java program.

All .jar files are in the *TIBCO_HOME\tpm-rest\Version_Number\lib* directory. Before processing requests from a Java program, you need to update the classpath environment variable.

For more information on TPM REST API JavaDoc, see [Java API Reference Pages](#).

The following is an example to invoke the IParticipants API from a Java program:

```
import com.tibco.ax.fw.cfg.api.*;
RepositoryConnection conn = new
RepositoryConnection("jdbc:oracle:thin:@dbserver:1521:XE",
"oracle.jdbc.OracleDriver", "bc", "bc");

IParticipants iParticipants = conn.getParticipantsHelper();

Location loc = iParticipants.retrieveParticipantBusinessLocation("partner1",
"Headquarters");

System.out.print(loc.getAddress1());
```

Protocols and Properties References

Transport Protocol, Business Protocol Properties for Host and Partner Participants, and Business Protocol Operation Node Properties are provided for your reference.

The following are the property lists:

- [Public Transport Protocol Properties](#)
- [Business Protocol Properties](#)
- [Business Protocol Operation Node Properties](#)

Public Transport Protocol Properties

This section provides property lists for public transport protocols.

The following are the public transport protocols:

- [AS1_EMAIL](#)
- [AS2_HTTP](#)
- [AS2_HTTPS](#)
- [AS3_FTP](#)
- [AS3_FTPS](#)
- [EMAIL](#)
- [FILE](#)
- [FTP](#)
- [FTPS](#)
- [HTTPS](#)
- [INBOX](#)
- [SSHFTP](#)

AS1_EMAIL

AS1_EMAIL transport protocol properties are listed as the following:

Property Name	Property Type	Property Display Name
URL	string	URL
SmtpSubject	string	Subject
SmtpCanBase64Encode	boolean	Base64 Encode Clear Text Messages
smtpIsNRRequired	boolean	Non-Repudiation of Receipt
SmtpCanSign	boolean	Sign
SmtpCanEncrypt	boolean	Encrypt
SmtpCanCompress	boolean	Compress

Property Name	Property Type	Property Display Name
SmtpCompressionChoice	enumeration	Compression Order
SmtpRequestReceipt	enumeration	Request Receipt
SmtpReceiptTimeout	integer	Receipt Timeout (minutes)

AS2_HTTP

AS2_HTTP transport protocol properties are listed as the following:

Property Name	Property Type	Property Display Name
URL	string	URL
httpMimeSubject	string	MIME Subject
httpIsNRRequired	boolean	Non-Repudiation of Receipt
httpCanSign	boolean	Sign
httpCanEncrypt	boolean	Encrypt
httpCanCompress	boolean	Compress
httpCompressionChoice	enumeration	Compression Order
httpRequestReceipt	enumeration	Request Receipt
httpReturnReceiptURL	string	Return Receipt URL
httpReceiptTimeout	integer	Receipt Timeout (minutes)
retryCount	integer	Retry Count
retryInterval	integer	Retry Interval
socketTimeout	integer	Socket Timeout (seconds)
useHTTPBasicAuthentication	boolean	Use HTTP Basic Authentication
username	string	Username
password	password	Password

AS2_HTTPS

AS2_HTTPS transport protocol properties are listed as the following:

Property Name	Property Type	Property Display Name
URL	string	URL

Property Name	Property Type	Property Display Name
SSLServerCredentialName	certificate	Server Certificate
authenticationCredentialName	privateKey	Client Authentication Identity
httpMimeSubject	string	MIME Subject
httpIsNRRequired	boolean	Non-Repudiation of Receipt
httpCanSign	boolean	Sign
httpCanEncrypt	boolean	Encrypt
httpCanCompress	boolean	Compress
httpCompressionChoice	enumeration	Compression Order
httpRequestReceipt	enumeration	Request Receipt
httpReturnReceiptURL	string	Return Receipt URL
httpReceiptTimeout	integer	Receipt Timeout (minutes)
retryCount	integer	Retry Count
retryInterval	integer	Retry Interval
socketTimeout	integer	Socket Timeout (seconds)
useHTTPBasicAuthentication	boolean	Use HTTP Basic Authentication

AS3_FTP

AS3_FTP transport protocol properties are listed as the following:

Property Name	Property Type	Property Display Name
N/A	N/A	N/A

AS3_FTPS

AS3_FTP transport protocol properties are listed as the following:

Property Name	Property Type	Property Display Name
SSLServerCredentialName	certificate	Server Certificate
authenticationCredentialName	privateKey	Client Authentication Identity

EMAIL

EMAIL transport protocol properties are listed as the following:

Property Name	Property Type	Property Display Name
URL	string	URL
SmtplibSubject	string	Subject
SmtplibCanBase64Encode	boolean	Base64 Encode Clear Text Messages
smtplibIsNNRequired	boolean	Non-Repudiation of Receipt
SmtplibCanSign	boolean	Sign
SmtplibCanEncrypt	boolean	Encrypt
SmtplibCanSendAttachment	boolean	Send Data as Attachment
SmtplibRequestReceipt	enumeration	Request Receipt
SmtplibReceiptTimeout	integer	Receipt Timeout (minutes)

FILE

FILE transport protocol properties are listed as the following:

Property Name	Property Type	Property Display Name
URL	string	URL
maskOption	enumeration	File Processing
FileMaskProperties	string	Output File Mask
FileScriptsFile	uploadedFile	Scripts

FTP

FTP transport protocol properties are listed as the following:

Property Name	Property Type	Property Display Name
URL	string	URL
FtpTransferMode	enumeration	Data Transfer
username	string	Username
password	password	Password
maskOption	enumeration	File Processing
FtpMaskProperties	string	Output File Mask
FtpScriptsFile	uploadedFile	Scripts

Property Name	Property Type	Property Display Name
retryCount	integer	Retry Count
retryInterval	integer	Retry Interval
sign	boolean	Sign
encrypt	boolean	Encrypt
compress	boolean	Compress
compressionAlgorithm	enumeration	Compression Algorithm
asciiArmour	boolean	ASCII Armor

FTPS

FTPS transport protocol properties are listed as the following:

Property Name	Property Type	Property Display Name
URL	string	URL
SSLServerCredentialName	certificate	Server Certificate
authenticationCredentialName	privateKey	Client Authentication Identity
FtpTransferMode	enumeration	Data Transfer
username	string	Username
password	password	Password
maskOption	enumeration	File Processing
FtpMaskProperties	string	File Mask
FtpScriptsFile	uploadedFile	Scripts
secureMode	enumeration	Secure Transport Mode
retryCount	integer	Retry Count
retryInterval	integer	Retry Interval
sign	boolean	Sign
encrypt	boolean	Encrypt
compress	boolean	Compress
compressionAlgorithm	enumeration	Compression Algorithm

Property Name	Property Type	Property Display Name
asciiArmour	boolean	ASCII Armor

HTTPS

HTTPS transport protocol properties are listed as the following:

Property Name	Property Type	Property Display Name
URL	string	URL
SSLServerCredentialName	certificate	Server Certificate
authenticationCredentialName	privateKey	Client Authentication Identity
useHTTPBasicAuthentication	boolean	Use HTTP Basic Authentication
username	string	Username
password	password	Password
retryCount	integer	Retry Count
retryInterval	integer	Retry Interval
socketTimeout	integer	Socket Timeout (seconds)
cipherGrade	enumeration	Cipher Suite Grade
useTLS	boolean	Can Use TLS
useSSL	boolean	Can Use SSLv3
gisbNaesbPackage	boolean	GISB/NAESB Package
gisbReceiptSignature	boolean	Receipt Signature Required
pgpEncrypt	boolean	PGP Encrypt
pgpSign	boolean	PGP Sign
caqhPackage	boolean	CAQH Message Envelope Package
CAQHPackageType	enumeration	Message Envelope Packaging

INBOX

INBOX transport protocol properties are listed as the following:

Property Name	Property Type	Property Display Name
URL	string	URL

Property Name	Property Type	Property Display Name
SmtpSubject	string	Subject

SSHFTP

INBOX transport protocol properties are listed as the following:

Property Name	Property Type	Property Display Name
URL	string	URL
authMode	enumeration	Authentication Mode
username	string	Username
password	password	Password
SSHServerCredentialName	certificate	Server Credential
authenticationCredentialName	privateKey	Client Authentication Identity
cipher	enumeration	Preferred Cipher
digest	enumeration	Preferred MAC
compression	enumeration	Preferred Compression
maskOption	enumeration	File Processing
SshFtpMaskProperties	string	File Mask
FtpScriptsFile	uploadedFile	Scripts
retryCount	integer	Retry Count
retryInterval	integer	Retry Interval
sign	boolean	Sign
encrypt	boolean	Encrypt
compress	boolean	Compress
compressionAlgorithm	enumeration	Compression Algorithm
asciiArmour	boolean	ASCII Armor

Business Protocol Properties

Business protocol property lists for the pair of host and partner participants.

The following are business protocols:

- [ebMS3](#)
- [ebXML](#)
- [EZComm](#)
- [RosettaNet](#)
- [SOAP](#)
- [EDIFACT](#)
- [Gateway](#)
- [TEXT](#)
- [TRADACOMS](#)
- [X12](#)

Each business protocol consists the properties of:

- Host participant properties, the properties to be applied on the host participant.
- Partner participant properties, the properties to be applied on the partner participant.

ebMS3

ebMS3 business protocol properties are listed as the following:

Host Participant Properties

Property Name	Property Type	Property Display Name
N/A	N/A	N/A

Partner Participant Properties

Property Name	Property Type	Property Display Name
specificationID	string	AgreementRef
agreementRefType	string	Type

ebXML

ebXML business protocol properties are listed as the following:

Host Participant Properties

Property Name	Property Type	Property Display Name
expireQueue	integer	Queued Conversation Expiration Period (days)

Partner Participant Properties

Property Name	Property Type	Property Display Name
dsigKeyInfoType	enumeration	Digital Signature KeyInfo Type

Property Name	Property Type	Property Display Name
specificationID	string	Specification ID

EZComm

EZComm business protocol properties are listed as the following:

Host Participant Properties

Property Name	Property Type	Property Display Name
N/A	N/A	N/A

Partner Participant Properties

Property Name	Property Type	Property Display Name
AllowOverrideFilename	boolean	Allow override of filename via HTTP parameter
dupDetectOutbound	boolean	Duplicate Detection for Outbound
dupDetectInbound	boolean	Duplicate Detection for Inbound

RosettaNet

RosettaNet business protocol properties are listed as the following:

Host Participant Properties

Property Name	Property Type	Property Display Name
AllowAllRoles	boolean	Assume all Roles
OutboundDocValidationStyle	enumeration	Outbound Document Validation
EnableStrictDocumentValidation	boolean	Inbound Document Validation (XSD)
EnableAuditToFile	boolean	Enable Audit Logging to File
AuditLogDir	string	Directory for Audit Log Files
DisableResponseAlways	boolean	Forward Response Document Only When Response Acknowledgement Succeeds
EnableFetchResponse	boolean	Enable Automatic Response for Duplicate Request

Partner Participant Properties

Property Name	Property Type	Property Display Name
AllowAllRoles	boolean	Assume all Roles
ClientAuthentication	boolean	Support Client Authentication Where Required
DigitalSignature	boolean	Use Digital Signature Where Required
XXXReplacement	boolean	Outbound Document Inline Replacement
SupportNOF	boolean	Enable Exchange of PIP0A1 (NOF)
DebugHeader	boolean	Enable Debug Header with RNIF2.0
MIMECTE	enumeration	MIME Content Transfer Encoding
OverrideHostDocumentValidation	boolean	Override Host Inbound Document Validation
DocValidationStyle	enumeration	Host Inbound Document Validation
OverrideHostOutBoundDocumentValidation	boolean	Override Host Outbound Document Validation
OutboundDocValidationStyle	enumeration	Outbound Document Validation
DisableResponseAlways	boolean	Forward Response Document Only When Response Acknowledgement Succeeds

SOAP

SOAP business protocol properties are listed as the following:

Host Participant Properties

Property Name	Property Type	Property Display Name
AllowAnonymousSOAPMessages	boolean	Allow Anonymous SOAP Messages

Partner Participant Properties

Property Name	Property Type	Property Display Name
dupDetectOutbound	boolean	Duplicate Detection for Outbound
AddBCSpecificSOAPHeader	boolean	Add BusinessConnect Specific Header
AllowAnonymousSOAPMessagesFromThisTradingPartner	boolean	Allow Anonymous SOAP Messages From This Trading Partner
SOAPEnvPrefix	string	SOAP namespace prefix
SOAPVersion	enumeration	SOAP Version
SOAPMTOMEnabled	boolean	SOAP MTOM Enabled

EDIFACT

EDIFACT business protocol properties are listed as the following:

Host Participant Properties

Property Name	Property Type	Property Display Name
_hostInterchangeHostInternalID	string	UNB-S002/0008 Internal ID/ Routing Address
_hostInterchangeHostInternalSubID	string	UNB-S002/0042 Internal Sub ID (Syntax 4)
Preprocessing._hostCharsToStrip	string	Characters To Strip (e.g. /r/n;/t;/0D)
Preprocessing._hostStripBetweenInterchanges	boolean	Strip Chars Between Segments Boundaries
Logging._hostLogInboundRequestToFile	boolean	Log Raw EDI Request to File
Logging._hostLogInboundRequestLocation	string	Store Location
Logging._hostLogInboundRequestIncludeDateFolder	boolean	Include Date Folder
Logging._hostLogOutboundRequestToFile	boolean	Log Raw EDI Request to File
Logging._hostLogOutboundRequestLocation	string	Store Location
Logging._hostLogOutboundRequestIncludeDateFolder	boolean	Include Date Folder

Property Name	Property Type	Property Display Name
Advanced._hostPPSkipContentEnabled	boolean	Publish XML (or TEXT) Request as File Reference
Advanced._hostPPSkipContentThreshold	integer	Threshold (bytes)
Advanced._hostPPSkipContentIncludeDateFolder	boolean	Include Date Folder
Advanced._hostPPSkipContentSaveLocation	string	Store Location
Advanced._hostXSLTPostProcessXML	boolean	Output XML Request in UTF-8 and Remove Empty Elements
Advanced._hostXMLStreamCompressed	boolean	Use In-memory Compression During EDI to XML (or EDI to TEXT) Conversion
Advanced._hostXMLStreamThreshold	integer	Threshold to Use File-based Storage During EDI to XML (or EDI to TEXT) Conversion (bytes)
Advanced._hostInstreamFileBasedThreshold	integer	Threshold to Use File-based Storage Prior to EDI Processing (bytes)
Advanced._hostAuditReportSaveLocation	string	Audit Report Location
Advanced._hostAuditReportIncludeDateFolder	boolean	Include Date folder

Partner Participant Properties

Property Name	Property Type	Property Display Name
_tpEnableInboundValidation	boolean	Enable EDI Validation
_tpDisableXMLCreation	boolean	Disable EDI to XML (or EDI to TEXT) Conversion
_tpEnableDuplicateDetection	boolean	Enable Transaction Duplicate Detection
_tpRouteInfo	string	Extra Info in Private Process Request
_tpInboundAllowableIdentifierList	string	Allowable Receiver Identifier List (e.g. ZZ:50291;ZZ:50292)
_tpAllowSecuredMessage	enumeration	Partner Level Security Option (MIME Encode Messages Only)

Property Name	Property Type	Property Display Name
_tpEnableInboundInterchangeComplete	boolean	Enable Interchange Complete Message
_tpEnableInboundAuditReportLogging	boolean	Enable Audit Report Logging
_tpEnableInboundInsightReporting	boolean	Publish Information to Insight Reporting
_tpValidateOutbound	boolean	Enable EDI Validation
_tpEnableOBDuplicateDetection	enumeration	Transaction Level Duplicate Detection
_tpEnableOutboundInsightReporting	boolean	Publish Information to Insight Reporting
_tpEnableOBEDIEncoding	enumeration	Outbound XML to EDI data encoding
_tpElementTagReplacer	list	Replace Element Value (e.g. E-7088=.; E-6032=.;)
Logging._tpLogInterchangeToFile	boolean	Log Raw EDI Segments to File
Logging._tpLogInterchangeLocation	string	Store Location
Logging._tpLogTransactionToFile	boolean	Log Raw EDI Segments to File
Logging._tpLogEnvelopeToFile	boolean	Include Envelope Segments
Logging._tpLogTransactionLocation	string	Store Location
Batching._tpAllowMultiIntc	boolean	Allow Single Transmission for Multiple Exclusively-batched Interchanges
Batching._tpIntcCtrlNumByOpId	boolean	Increment Interchange Control Reference by Operation ID for Exclusive Batch
Batching._regenerateCtrlNum	boolean	Regenerate Control Number For Batch Resend
Batching._enableInsightReporting	boolean	Publish Information to Insight Reporting for Batch
Batching._tpTransportTpName	string	Gateway (override scheduler and transport settings)
Interchange Header._tpAlwaysIncludeUNA	boolean	Always Generate UNA Segment

Property Name	Property Type	Property Display Name
Interchange Header._tpSyntaxIdentifier	string	UNB-S001/0001 Identifier
Interchange Header._tpServiceCodeList	string	UNB-S001/0080 Service Code List (Syntax 4)
Interchange Header._tpCharacterEncoding	string	UNB-S001/0133 Character Encoding (Syntax 4)
Interchange Header._tpTpInternalID	string	UNB-S003/0014 Internal ID/ Routing Address
Interchange Header._tpTpInternalSubID	string	UNB-S003/0046 Internal Sub ID (Syntax 4)
Interchange Header._tpDate	string	UNB-S004/0017 Date Format
Interchange Header._tpTime	string	UNB-S004/0019 Time Format
Interchange Header._tpRecipientRefPassword	string	UNB-S005/0022 Reference/ Password
Interchange Header._tpRecipientRefPasswordQual	string	UNB-S005/0025 Qualifier
Interchange Header._tpAppRef	string	UNB-0026 Application Reference
Interchange Header._tpProcessingPriority	string	UNB-0029 Processing Priority Code
Interchange Header._tpAckRequested	string	UNB-0031 Ack Requested
Interchange Header._tpAgreementIdentifier	string	UNB-0032 Agreement Identifier
Interchange Header._tpTestIndicator	string	UNB-0035 Test Indicator
Group Header._tpGroupCreationTxn	enumeration	Transaction
Group Header._tpGroupCreationAck	enumeration	Acknowledgement
Group Header._tpHostAppQual	string	UNG-S006/0007 Sender Qualifier
Group Header._tpHostAppCode	string	UNG-S006/0040 Sender ID
Group Header._tpTpAppQual	string	UNG-S007/0007 Recipient Qualifier
Group Header._tpTpAppCode	string	UNG-S007/0044 Receiver ID
Group Header._tpDate	string	UNG-S004/0017 Date Format
Group Header._tpTime	string	UNG-S004/0019 Time Format

Property Name	Property Type	Property Display Name
Group Header._tpAssociationCode	string	UNG-S008/0057 Association Assigned Code
Group Header._tpAppPassword	string	UNG-0058 Application Password
Acknowledgement._tpCreateOption	enumeration	Ack Creation Option
Acknowledgement._tpOnErrorOnly	boolean	Ack on Errors Only
Acknowledgement._tpVersionNum	string	UNH-S009/0052 Version Number
Acknowledgement._tpReleaseNum	string	UNH-S009/0054 Release Number
Acknowledgement._tpAgencyCode	string	UNH-S009/0051 Controlling Agency Code
Acknowledgement._tpAssocCode	string	UNH-S009/0057 Association Assigned Code
Acknowledgement._tpRecordOption	enumeration	Ack Expected Option
Control Numbers._tpGrpIncrementReceive	enumeration	Group Control Number Increment Across Interchanges
Control Numbers._tpIntcSeqCheckFlag	enumeration	Interchange Control Number Sequence Check
Control Numbers._tpGrpSeqCheckFlag	enumeration	Group Control Number Sequence Check
Control Numbers._tpTxnSeqCheckFlag	enumeration	Transaction Control Number Sequence Check
Control Numbers._tpResetInbound	boolean	Reset on Save
Control Numbers._tpGrpIncrementSend	enumeration	Increment Group Control Number Across Interchanges
Control Numbers._tpTxnIncrementSend	enumeration	Increment Transaction Control Number Sequentially Across Interchanges
Control Numbers._tpIntcSeed	integer	Interchange Control Number Seed
Control Numbers._tpIntcEnd	integer	Interchange Control Number End
Control Numbers._tpGrpSeed	integer	Group Control Number Seed

Property Name	Property Type	Property Display Name
Control Numbers._tpTxnSeed	integer	Transaction Control Number Seed
Control Numbers._tpResetOutbound	boolean	Reset on Save
Delimiters._tpSubelementDelimiter	string	UNA-010 Component Data Element Separator
Delimiters._tpElementDelimiter	string	UNA-020 Data Element Separator
Delimiters._tpDecimalSeparator	string	UNA-030 Decimal Separator
Delimiters._tpReleaseCharacter	string	UNA-040 Release Character
Delimiters._tpRepeatingSeparator	string	UNA-050 Repetition Separator (Syntax 4)
Delimiters._tpSegmentDelimiter	string	UNA-060 Segment Terminator
Delimiters._tpExtraSegDelimiter	string	Extra Segment Terminators (e.g. 0x0d,0x0a)

Gateway

Gateway business protocol properties are listed as the following:

Host Participant Properties

Property Name	Property Type	Property Display Name
Logging._hostLogInboundRequestToFile	boolean	Log Raw Request to File
Logging._hostPPSkipContentThreshold	integer	Threshold (bytes)
Logging._hostLogInboundRequestLocation	string	Store Location
Logging._hostLogInboundRequestIncludeDateFolder	boolean	Include Date Folder
Logging._hostLogOutboundRequestToFile	boolean	Log Raw EDI Request to File
Logging._hostLogOutboundRequestLocation	string	Store Location
Logging._hostLogOutboundRequestIncludeDateFolder	boolean	Include Date Folder

Partner Participant Properties

Property Name	Property Type	Property Display Name
_tpAllowSecuredMessage	enumeration	Partner Level Security Option (MIME Encode Messages Only)
Batching._tpAllowMultiIntc	boolean	Allow Single Transmission for Multiple Exclusively-batched Interchanges
Batching._tpIntcCtrlNumByOpId	boolean	Increment Interchange Control Number by Operation ID for Exclusive Batch
Batching._regenerateCtrlNum	boolean	Regenerate Control Number For Batch Resend
Batching._enableInsightReporting	boolean	Publish Information to Insight Reporting for Batch
Batching._tpSchedulerBatchByTp	boolean	Always Create Batch per Trading Partner
Batching._tpEnableOBEDIEncoding	enumeration	Outbound XML to EDI data encoding for Batch

TEXT

Text business protocol properties are listed as the following:

Host Participant Properties

Property Name	Property Type	Property Display Name
Logging._hostLogInboundRequestToFile	boolean	Log Raw TEXT Request to File
Logging._hostLogInboundRequestLocation	string	Store Location
Logging._hostLogInboundRequestIncludeDateFolder	boolean	Include Date Folder
Logging._hostLogOutboundRequestToFile	boolean	Log Raw TEXT Request to File
Logging._hostLogOutboundRequestLocation	string	Store Location
Logging._hostLogOutboundRequestIncludeDateFolder	boolean	Include Date Folder
Advanced._hostPPSkipContentEnabled	boolean	Publish XML Request as File Reference
Advanced._hostPPSkipContentThreshold	integer	Threshold (bytes)

Property Name	Property Type	Property Display Name
Advanced._hostPPSkipContentIncludeDateFolder	boolean	Include Date folder
Advanced._hostPPSkipContentSaveLocation	string	Store Location
Advanced._hostXSLTPostProcessXML	boolean	Output XML Request in UTF-8 and Remove Empty Elements

Partner Participant Properties

Property Name	Property Type	Property Display Name
_tpEnableDuplicateDetection	boolean	Enable Transaction Duplicate Detection
_tpRouteInfo	string	Extra Info in Private Process Request
_tpEnableOBDuplicateDetection	enumeration	Transaction Level Duplicate Detection
_tpValidateOutbound	boolean	Enable EDI Validation
_tpEnableOBEDIEncoding	enumeration	Outbound XML to EDI data encoding
Logging._tpLogInterchangeToFile	boolean	Log Raw TEXT Segments to File
Logging._tpLogInterchangeLocation	string	Store Location
Delimiters._tpTEXTWrapData	boolean	Wrap Data
Delimiters._tpSegmentDelimiter	string	Segment Delimiter
Delimiters._tpElementDelimiter	string	Element Delimiter
Delimiters._tpRecordDelimiter	string	Record Delimiter
Delimiters._tpInboundSegmentDelimiter	string	Segment Delimiter
Delimiters._tpInboundElementDelimiter	string	Element Delimiter
Delimiters._tpInboundRecordDelimiter	string	Record Delimiter

TRADACOMS

TRADACOMS business protocol properties are listed as the following:

Host Participant Properties

Property Name	Property Type	Property Display Name
Preprocessing._hostCharsToStrip	string	Characters To Strip (e.g. /r/n;/t;/0D)
Preprocessing._hostStripBetweenInterchanges	boolean	Strip Chars Between Segments Boundaries
Logging._hostLogInboundRequestToFile	boolean	Log Raw EDI Request to File
Logging._hostLogInboundRequestLocation	string	Store Location
Logging._hostLogInboundRequestIncludeDateFolder	boolean	Include Date Folder
Logging._hostLogOutboundRequestToFile	boolean	Log Raw EDI Request to File
Logging._hostLogOutboundRequestLocation	string	Store Location
Logging._hostLogOutboundRequestIncludeDateFolder	boolean	Include Date Folder
Advanced._hostPPSkipContentEnabled	boolean	Publish XML Request as File Reference
Advanced._hostPPSkipContentThreshold	integer	Threshold (bytes)
Advanced._hostPPSkipContentIncludeDateFolder	boolean	Include Date folder
Advanced._hostPPSkipContentSaveLocation	string	Store Location
Advanced._hostXSLTPostProcessXML	boolean	Output XML Request in UTF-8 and Remove Empty Elements
Advanced._hostAuditReportSaveLocation	string	Audit Report Location
Advanced._hostAuditReportIncludeDateFolder	boolean	Include Date folder

Partner Participant Properties

Property Name	Property Type	Property Display Name
_tpEnableInboundValidation	boolean	Enable EDI Validation
_tpDisableXMLCreation	boolean	Disable EDI to XML Conversion
_tpEnableDuplicateDetection	boolean	Enable Transaction Duplicate Detection

Property Name	Property Type	Property Display Name
_tpRouteInfo	string	Extra Info in Private Process Request
_tpEnableInboundInterchangeComplete	boolean	Enable Interchange Complete Message
_tpEnableInboundAuditReportLogging	boolean	Enable Audit Report Logging
_tpValidateOutbound	boolean	Enable EDI validation
_tpEnableOBDuplicateDetection	enumeration	Transaction Level Duplicate Detection
_tpEnableOBEDIEncoding	enumeration	Outbound XML to EDI data encoding
Logging._tpLogInterchangeToFile	boolean	Log Raw EDI Segments to File
Logging._tpLogInterchangeLocation	string	Store Location
Control Numbers._tpTxnSeed	integer	Transmission Control Number Seed
Control Numbers._tpResetOutbound	boolean	Reset on Save

X12

TRADACOMS business protocol properties are listed as the following:

Partner Participant Properties

Property Name	Property Type	Property Display Name
_hostCAQHUserName	string	CAQH UserName to authenticate at Partner
_hostCAQHPassword	password	CAQH Password to authenticate at Partner
Preprocessing._hostCharsToStrip	string	Characters To Strip (e.g. /r/n;/t;/0D)
Preprocessing._hostStripBetweenInterchanges	boolean	Strip Chars Between Segment Boundaries
Logging._hostLogInboundRequestToFile	boolean	Log Raw EDI Request to File
Logging._hostLogInboundRequestLocation	string	Store Location
Logging._hostLogInboundRequestIncludeDateFolder	boolean	Include Date Folder

Property Name	Property Type	Property Display Name
Logging._hostLogOutboundRequestToFile	boolean	Log Raw EDI Request to File
Logging._hostLogOutboundRequestLocation	string	Store Location
Logging._hostLogOutboundRequestIncludeDateFolder	boolean	Include Date Folder
Advanced._hostPPSkipContentEnabled	boolean	Publish XML (or TEXT) Request as File Reference
Advanced._hostPPSkipContentThreshold	integer	Threshold (bytes)
Advanced._hostPPSkipContentIncludeDateFolder	boolean	Include Date Folder

Partner Participant Properties

Property Name	Property Type	Property Display Name
_tpEnableInboundValidation	boolean	Enable EDI Validation
_tpDisableXMLCreation	boolean	Disable EDI to XML (or EDI to TEXT) Conversion
_tpEnableDuplicateDetection	boolean	Enable Transaction Duplicate Detection
_tpRouteInfo	string	Extra Info in Private Process Request
_tpInboundAllowableIdentifierList	string	Allowable Receiver Identifier List (e.g. ZZ:50291;ZZ:50292)
_tpAllowSecuredMessage	enumeration	Partner Level Security Option (MIME Encode Messages Only)
_tpEnableInboundInterchangeComplete	boolean	Enable Interchange Complete Message
_tpEnableInboundAuditReportLogging	boolean	Enable Audit Report Logging
_tpEnableInboundInsightReporting	boolean	Publish Information to Insight Reporting
_tpValidateOutbound	boolean	Enable EDI Validation
_tpEnableOBDuplicateDetection	enumeration	Transaction Level Duplicate Detection

Property Name	Property Type	Property Display Name
_tpEnableOutboundInsightReporting	boolean	Publish Information to Insight Reporting
_tpEnableOBEDIEncoding	enumeration	Outbound XML to EDI data encoding
_tpElementTagReplacer	list	Replace Element Value (e.g. E-7088=., E-6032=.,)
Logging._tpLogInterchangeToFile	boolean	Log Raw EDI Segments to File
Logging._tpLogInterchangeLocation	string	Store Location
Logging._tpLogTransactionToFile	boolean	Log Raw EDI Segments to File
Logging._tpLogEnvelopeToFile	boolean	Include Envelope Segments
Logging._tpLogTransactionLocation	string	Store Location
Batching._tpAllowMultiIntc	boolean	Allow Single Transmission for Multiple Exclusively-batched Interchanges
Batching._tpIntcCtrlNumByOpId	boolean	Increment Interchange Control Number by Operation ID for Exclusive Batch
Batching._regenerateCtrlNum	boolean	Regenerate Control Number For Batch Resend
Batching._enableInsightReporting	boolean	Publish Information to Insight Reporting for Batch
Batching._tpTransportTpName	string	Gateway (override scheduler and transport settings)
Interchange Header._tpAuthQual	string	ISA01 Qualifier
Interchange Header._tpAuthInfo	string	ISA02 Information
Interchange Header._tpSecurityQual	string	ISA03 Qualifier
Interchange Header._tpSecurityInfo	string	ISA04 Information
Interchange Header._tpDate	string	ISA09 Date Format
Interchange Header._tpTime	string	ISA10 Time Format

Property Name	Property Type	Property Display Name
Interchange Header._tpControlStandard	string	ISA11 Control Standard (4012 and Lower)
Interchange Header._tpRepeatingSeparator	string	ISA11 Repeating Separator (4020 and Higher)
Interchange Header._tpAckRequested	string	ISA14 Ack Requested
Interchange Header._tpUsageIndicator	string	ISA15 Usage Indicator
Interchange Header._tpSubelementDelimiter	string	ISA16 Component Element Separator
Group Header._tpHostAppCode	string	GS02 Sender
Group Header._tpTpAppCode	string	GS03 Receiver
Group Header._tpDate	string	GS04 Date Format
Group Header._tpTime	string	GS05 Time Format
Acknowledgement._tpCreateOption	enumeration	Ack Creation Option
Acknowledgement._tpCreate999AckOption	boolean	999 Ack Creation Option *
Acknowledgement._tpAckCreationForRequested	boolean	Ack Creation based on ISA14 Ack Requested
Acknowledgement._tpAckVersionType	enumeration	Ack Version Option
Acknowledgement._tpAckVersion	string	Ack Version
Acknowledgement._tpRecordOption	enumeration	Ack Expected Option
Acknowledgement._tpRecord999AckOption	boolean	999 Ack Expected Option *
Control Numbers._tpGrpIncrementReceive	enumeration	Group Control Number Increment across Interchanges
Control Numbers._tpIntcSeqCheckFlag	enumeration	Interchange Control Number Sequence Check
Control Numbers._tpGrpSeqCheckFlag	enumeration	Group Control Number Sequence Check
Control Numbers._tpTxnSeqCheckFlag	enumeration	Transaction Control Number Sequence Check
Control Numbers._tpResetInbound	boolean	Reset on Save

Property Name	Property Type	Property Display Name
Control Numbers._tpGrpIncrementSend	enumeration	Increment Group Control Number across Interchanges
Control Numbers._tpTxnIncrementSend	enumeration	Increment Transaction Control Number Sequentially Across Interchanges
Control Numbers._tpIntcSeed	integer	Interchange Control Number Seed
Control Numbers._tpIntcEnd	integer	Interchange Control Number End
Control Numbers._tpGrpSeed	integer	Group Control Number Seed
Control Numbers._tpTxnSeed	integer	Transaction Control Number Seed
Control Numbers._tpResetOutbound	boolean	Reset on Save
Delimiters._tpSegmentDelimiter	string	Segment Terminator
Delimiters._tpElementDelimiter	string	Data Element Separator
Delimiters._tpExtraSegDelimiter	string	Extra Segment Terminators (e.g. 0x0d,0x0a)

Business Protocol Operation Node Properties

Property lists for business protocol operation node.

The following are business protocol operation nodes:

- [ebMS3 Operation Nodes](#)
- [ebXML Operation Nodes](#)
- [EZComm Operation Nodes](#)
- [RosettaNet Operation Nodes](#)
- [SOAP Operation Nodes](#)
- [EDIFACT Operation Nodes](#)
- [Gateway Operation Nodes](#)
- [TEXT Operation Nodes](#)
- [TRADACOMS Operation Nodes](#)
- [X12 Operation Nodes](#)

ebMS3 Operation Nodes

ebMS3 business protocol operation node properties are listed as the following:

Operation Node Name	Property Values
Organization Node	businessProcessAgencyID, string, Business Process Agency ID
Business Process Node	N/A
Version Node	N/A
One-Way Node	Roles.initiatingRole, string, Initiating Role Roles.respondingRole, string, Responding Role Service Information.service, string, Service Service Information.serviceType, string, Service Type Service Information.pmode, string, P-Mode ID Document.encryptDocument, boolean, Encrypt Document Document.compressDocument, boolean, Compress Document
Pull Node	Roles.initiatingRole, string, Initiating Role Roles.respondingRole, string, Responding Role Service Information.service, string, Service Service Information.serviceType, string, Service Type Service Information.pmode, string, P-Mode ID
Two-Way Node	Roles.respondingRole, string, Responding Role Service Information.service, string, Service Service Information.serviceType, string, Service Type Service InformationRoles.initiatingRole, string, Initiating Role .pmode, string, P-Mode ID Document.encryptDocument, boolean, Encrypt Document Document.compressDocument, boolean, Compress Document

ebXML Operation Nodes

ebXML business protocol operation node properties are listed as the following:

Operation Node Name	Property Values
Organization Node	businessProcessAgencyID, string, Business Process Agency ID
Business Process Node	N/A
Version Node	schemaDefinitionReference, uploadedFile, Schema Definition Reference

Operation Node Name	Property Values
Notify Node	Roles.initiatingRole, string, Initiating Role Roles.respondingRole, string, Responding Role Service Infomation.service, string, Service Service Infomation.serviceType, string, Service Type Document.validateOutgoingDocument, boolean, Validate Outgoing Document Document.validateIncomingDocument, boolean, Validate Incoming Document Document.encryptDocument, enumeration, Encrypt Document Document.mimeType, enumeration, MIME Content-Type for XMLEncryption
Request-Response Node	Roles.initiatingRole, string, Initiating Role Roles.respondingRole, string, Responding Role Service Infomation.service, string, Service Service Infomation.serviceType, string, Service Type Document.validateOutgoingDocument, boolean, Validate Outgoing Document Document.validateIncomingDocument, boolean, Validate Incoming Document Document.encryptDocument, enumeration, Encrypt Document Document.mimeType, enumeration, MIME Content-Type for XMLEncryption

EZComm Operation Nodes

EZComm business protocol operation node properties are listed as the following:

Operation Node Name	Property Values
Category Node	N/A
Version Node	N/A
Synchronous Request-Response Node	validateInbound, boolean, Validate Message validateOutbound, boolean, Validate Message
Asynchronous Request-Response Node	validateInbound, boolean, Validate Message validateOutbound , boolean , Validate Message
Notify Node	validateInbound, boolean, Validate Message validateOutbound, boolean, Validate Message

RosettaNet Operation Nodes

RosettaNet business protocol operation node properties are listed as the following:

Operation Node Name	Property Values
PIP Node	N/A
Version Node	PIPName , string , PIP Name (as defined in the PIP Specification)
Notify Node	DefaultRNIFVersion, enumeration, Default RNIF Version OverrideMsgPropsDSNR, boolean, Override Message Properties DigSigRequired, boolean, Digital Signature is Required NRRequired, boolean, Non Repudiation is Required OverrideRolesAndServices, boolean, Enable Overriding of Roles/ Services fromRole, enumeration, From Role Classification Code toRole, enumeration, To Role Classification code fromService, enumeration, From Business Service Code toService, enumeration, To Business Service Code OverrideDocumentValidation, boolean, Override Inbound Document Validation DocValidationStyle, enumeration, Document Inbound Validation Private Process.SendParsedXML, boolean, Send Parsed XML to Private Process Private Process.PrivateProcessWaitTime, integer, Private Process Wait Time (seconds) Private Process.ResolveFileRefToActualData, boolean, Send Actual Payload to Private Process Instead of File Reference RNIF 2_0.PayloadCompression, boolean, Payload Compression RNIF 2_0.PayloadEncryption, enumeration, Payload Encryption RNIF 2_0.BindID , string, Third Party Content Bind ID RNIF 2_0.MessageStandard, string, Non RosettaNet Message Standard RNIF 2_0.MessageStandardVersion, string, Non RosettaNet Message Standard Version RNIF 2_0.XMLDocType, string, Root XML Element Name RNIF 2_0.DTD, uploadedFile, Third Party DTD Name RNIF 2_0.XSD, uploadedFile, Third Party XSD Name

Operation Node Name	Property Values
Request-Response Node	DefaultRNIFVersion, enumeration, Default RNIF Version OverrideMsgPropsDSNR, boolean, Override Message Properties DigSigRequired, boolean, Digital Signature is Required NRRequired, boolean, Non Repudiation is Required OverrideRolesAndServices, boolean, Enable Overriding of Roles/ Services fromRole, enumeration, From Role Classification Code toRole, enumeration, To Role Classification code fromService, enumeration, From Business Service Code toService, enumeration, To Business Service Code OverrideDocumentValidation, boolean, Override Inbound Document Validation DocValidationStyle, enumeration, Inbound Document Validation Private Process.SendParsedXML, boolean, Send Parsed XML to Private Process Private Process.PrivateProcessWaitTime, integer, Private Process Wait Time (seconds) Private Process.ResolveFileRefToActualData, boolean, Send Actual Payload to Private Process Instead of File Reference RNIF 2_0.PayloadCompression, boolean, Payload Compression RNIF 2_0.PayloadEncryption, enumeration, Payload Encryption RNIF 2_0.BindID, string, Third Party Content Bind ID RNIF 2_0.MessageStandard, string, Non RosettaNet Message Standard RNIF 2_0.MessageStandardVersion, string, Non RosettaNet Message Standard Version RNIF 2_0.XMLDocType, string, XML Root Element Name RNIF 2_0.DTD, uploadedFile, Third Party DTD Name RNIF 2_0.XSD, uploadedFile, Third Party XSD Name RNIF 2_0.XMLDocType2, string, XML Root Element Name RNIF 2_0.DTD2, uploadedFile, Third Party DTD Name RNIF 2_0.XSD2, uploadedFile, Third Party XSD Name

SOAP Operation Nodes

SOAP business protocol operation node properties are listed as the following:

Operation Node Name	Property Values
Interface Node	N/A
Version Node	N/A

Operation Node Name	Property Values
Synchronous Request-Response Node	SOAPAction, string, SOAP Action
Notify Node	SOAPAction, string, SOAP Action

EDIFACT Operation Nodes

EDIFACT business protocol operation node properties are listed as the following:

Operation Node Name	Property Values
Interchange Version Node	InterchangeErrorLimit, integer, Error Limit
Group Version Node	GroupErrorLimit, integer, Error Limit GroupAgencyCode, string, UNG-0051 Controlling Agency Code GroupVersion, string, UNG-S008/0052 Version Number GroupReleaseNumber, string, UNG-S008/0054 Release Number GroupSenderID, string, UNG-S006/0040 Application Sender ID GroupReceiverID, string, UNG-S007/0044 Application Recipient ID

Operation Node Name	Property Values
Notification Node	<p>bindingGroupModifier, list, UNG-S006/0040 Application Sender ID/ UNG-S007/0044 Application Recipient ID (e.g. Application Sen:Application Rec)</p> <p>outputSubEDI, boolean, Include in Private Process Request</p> <p>outputErrorSubEDI, boolean, Include in Validation Error Advisory</p> <p>inboundTxRoutingInfo, string, Extra Transaction Info</p> <p>inboundSecurityOption, enumeration, Security Option (MIME Encode Messages Only)</p> <p>Guideline.groupID, string, UNG-0038 Group ID</p> <p>Guideline.transactionGuideline, uploadedFile, Guideline file for validating EDIFACT Partner data(.sef or .std)</p> <p>Guideline.transactionValidatorProfile, uploadedFile, Validator Profile file (.apf)</p> <p>Guideline.transactionErrorLimit, integer, Error Limit</p> <p>Guideline.inboundTranslationType, enumeration, Inbound EDIFACT Translation Type (e.g. EDI to XML or EDI to TEXT)</p> <p>Guideline.backendTransactionGuideline, uploadedFile, Guideline File used for translating EDIFACT to TEXT (.sef or .std)</p> <p>Schema.transactionSchema, uploadedFile, Transaction Schema for EDI to XML or XML to EDI(.xsd)</p> <p>Schema.inputRootElementName, string, Request Root Element Name</p> <p>Schema.transactionEDIt/XMLMapFile, uploadedFile, EDI to XML (or EDI to TEXT) translation Map file (.map)</p> <p>Schema.transactionXMLtoEDIMapFile, uploadedFile, XML to EDI translation Map file (.map)</p>

Gateway Operation Nodes

Gateway business protocol operation node properties are listed as the following:

Operation Node Name	Property Values
Group Node	N/A
X12 Document Node	N/A
EDIFACT Document Node	N/A
XML Document Node	N/A
Text Document Node	N/A
TRADACOMS Document	N/A

TEXT Operation Nodes

TEXT business protocol operation node properties are listed as the following:

Operation Node Name	Property Values
Message Group Node	N/A
Notification Node	textFormat , enumeration , Message Type Format outputSubEDI, boolean, Include in Private Process Request inboundTxRoutingInfo, string, Extra Message Type Info Guideline.transactionGuideline, uploadedFile, Message Guideline (.sef or .std) Guideline.transactionValidatorProfile, uploadedFile, Validator Profile file (.apf) Guideline.outboundTranslationType, enumeration, TEXT to EDI Translation Type Guideline.targetEDIOperationID, string, Operation ID of EDI transaction (e.g. 00403/004040/850) Guideline.targetEDIGuideline, uploadedFile, Guideline File used for translating TEXT to EDI (.sef or .std) Schema.transactionSchema, uploadedFile, Message Schema (.xsd) Schema.inputRootElementName, string, Request Root Element Name Schema.transactionEDItoXMLMapFile, uploadedFile, Message to XML translation Map file (.map) Schema.transactionXMLtoEDIMapFile, uploadedFile, XML to Message translation Map file (.map) Schema.transactionTEXTtoEDIMapFile, uploadedFile, TEXT to EDI translation Map file (.map)

TRADACOMS Operation Nodes

TRADACOMS business protocol operation node properties are listed as the following:

Operation Node Name	Property Values
STDS - Syntax Rules Identifier Node	N/A

Operation Node Name	Property Values
APRF - Application Reference Node	outputSubEDI , boolean , Include in Private Process Request inboundTxRoutingInfo, string, Extra Transmission Info Guideline.transmissionGuideline, uploadedFile, Transmission Guideline (.sef or .std) Guideline.transmissionValidatorProfile, uploadedFile, Validator Profile file (.apf) Schema.transmissionSchema, uploadedFile, Transmission Schema (.xsd) Schema.inputRootElementName, string, Request Root Element Name Schema.transmissionEDItToXMLMapFile, uploadedFile, Transmission to XML translation Map file (.map) Schema.transmissionXMLtoEDIMapFile, uploadedFile, XML to Transmission translation Map file (.map)

X12 Operation Nodes

X12 business protocol operation node properties are listed as the following:

Operation Node Name	Property Values
Interchange Version Node	N/A
Group Version Node	N/A

Operation Node Name	Property Values
Notification Node	<p>bindingGroupModifier, list, GS02 Sender/GS03 Receiver (e.g. Application Sen:Application Rec)</p> <p>outputSubEDI, boolean, Include in Private Process Request</p> <p>outputErrorSubEDI, boolean, Include in Validation Error Advisory</p> <p>inboundTxRoutingInfo, string, Extra Transaction Info</p> <p>inboundSecurityOption, enumeration, Security Option (MIME Encode Messages Only)</p> <p>Guideline.groupID, string, GS01 Functional Identifier Code</p> <p>Guideline.transactionGuideline, uploadedFile, Guideline File for validating X12 Partner data (.sef or .std)</p> <p>Guideline.transactionValidatorProfile, uploadedFile, Validator Profile File (.apf)</p> <p>Guideline.transactionErrorLimit, integer, Error Limit</p> <p>Guideline.inboundTranslationType, enumeration, Inbound X12 Translation Type (e.g. EDI to XML or EDI to TEXT)</p> <p>Guideline.backendTransactionGuideline, uploadedFile, Guideline File used for translating X12 to TEXT (.sef or .std)</p> <p>Schema.transactionSchema, uploadedFile, Transaction Schema (.xsd)</p> <p>Schema.inputRootElementName, string, Request Root Element Name</p> <p>Schema.transactionEDIToXMLMapFile, uploadedFile, EDI to XML (or EDI to TEXT) translation Map file (.map)</p> <p>Schema.transactionXMLtoEDIMapFile, uploadedFile, XML to EDI translation Map file (.map)</p>

Operation Node Name	Property Values
Sync RequestResponse Node	<p>responseTxnSet , string , Acceptance Response</p> <p>ackTxnType, string, Rejection Ack</p> <p>outputSubEDI, boolean, Include in Private Process Request</p> <p>outputErrorSubEDI, boolean, Include in Validation Error Advisory</p> <p>Guideline.requestGroupID, string, GS01 Functional Identifier Code (for Request)</p> <p>Guideline.requestInboundTranslationType, enumeration, Inbound Translation Type (e.g. EDI to XML or EDI to TEXT)</p> <p>Guideline.requestTransactionGuideline, uploadedFile, Request Guideline File (.sef or .std)</p> <p>Guideline.requestValidatorProfile, uploadedFile, Request Validator Profile File (.apf)</p> <p>Guideline.backendRequestTransactionGuideline, uploadedFile, Guideline File used to translate X12 Request to TEXT (.sef or .std)</p> <p>Guideline.requestErrorLimit, integer, Request Error Limit</p> <p>Guideline.responseGroupID, string, GS01 Functional Identifier Code (for Response)</p> <p>Guideline.responseTransactionGuideline, uploadedFile, Response Guideline File (.sef or .std)</p> <p>Guideline.responseValidatorProfile, uploadedFile, Response Validator Profile File (.apf)</p> <p>Guideline.backendResponseTransactionGuideline, uploadedFile, Guideline File used to translate EDI response to TEXT (.sef or .std)</p> <p>Guideline.responseOutboundTranslationType, enumeration, Backend to Partner Translation Type for Response(e.g. XML to EDI or TEXT to EDI)</p> <p>Guideline.outboundResponseTransactionGuideline, uploadedFile, Guideline File used to translate TEXT to EDI response (.sef or .std)</p> <p>Guideline.responseErrorLimit, integer, Response Error Limit</p> <p>Guideline.ackGroupID, string, GS01 Functional Identifier Code (for Acknowledgement)</p> <p>Guideline.ackTransactionGuideline, uploadedFile, Rejection Ack Guideline File (.sef or .std)</p> <p>Guideline.backendAckTransactionGuideline, uploadedFile, Guideline File used to translate EDI rejection Ack to TEXT (.sef or .std)</p> <p>Schema.requestTransactionSchema, uploadedFile, Request Transaction Schema (.xsd)</p> <p>Schema.inputRootElementName, string, Request Root Element Name</p> <p>Schema.responseTransactionSchema, uploadedFile, Response Transaction Schema (.xsd)</p>

Operation Node Name	Property Values
	Schema.outputRootElementName, string, Response Root Element Name
	Schema.ackTransactionSchema, uploadedFile, Rejection Ack Transaction Schema (.xsd)
	Schema.rejectRootElementName, string, Rejection Root Element Name

Java API Reference Pages

Detailed descriptions of each method in the Java API reference are provided.

Java DOC

To view Java DOC, see HTML version of *TIBCO Trading Partner Management REST API User's Guide*.